


The Adventures of Sir Charles Foxworth™

**MURDER**  
on the  
**MISSISSIPPI**



# MURDER

on the

# MISSISSIPPI™

A Unique, Illustrated Computer Adventure



What begins as an elegant excursion down the mighty river quickly becomes a madcap murder mystery. Any one of eight suspicious characters could have done it. They're all quite innocent. Until you and the distinguished British investigator, Sir Charles Foxworth, can prove one guilty.



**ACTIVISION**  
HOME COMPUTER SOFTWARE

DISK FOR  
COMMODORE 64/128™

DISK FOR  
COMMODORE  
64/128™

**ACTIVISION**  
HOME COMPUTER SOFTWARE

# MURDER on the MISSISSIPPI <sup>TM</sup>

Created by Adam Bellin

## The World-Renowned Sleuth

Accompany the world-famous investigator Sir Charles Foxworth and his faithful manservant Regis Phelps on this marvelously murderous riverboat adventure.

## The Scene of the Crime

Promenade on all four decks of the elaborate Delta Princess. Discover who - or what - lies behind her twenty-nine doors.

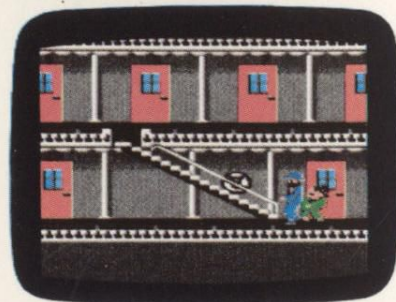
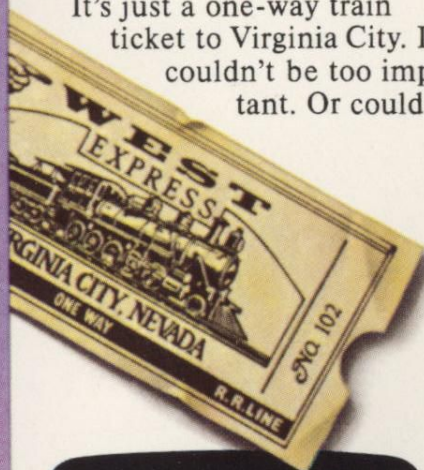
## The Suspects

Meet eight fascinating fellow travelers and listen to eight equally confusing alibis. There's a filthy rich widow, a gun-toting philanthropist, a sexy not-so-southern belle, the honorable captain and his hardworking crewman - just to name a few.

## The Evidence

Gather clues from conversations, from behind closed doors, or from just about anywhere on the ship. Then try to piece them all together to solve the mystery of the *Murder on the Mississippi*.

It's just a one-way train ticket to Virginia City. It couldn't be too important. Or could it?



There's something different hidden behind every door. A different character. A different piece of evidence. A different kind of danger. You've got just three days to unravel this cold-blooded caper. And just three days to avoid becoming the next victim.



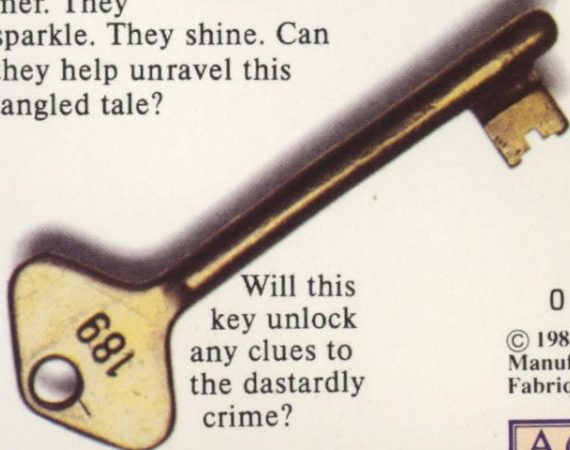
Your three-day journey to New Orleans begins just outside St. Louis. And ends when you get the murderer. Or when the murderer gets you.



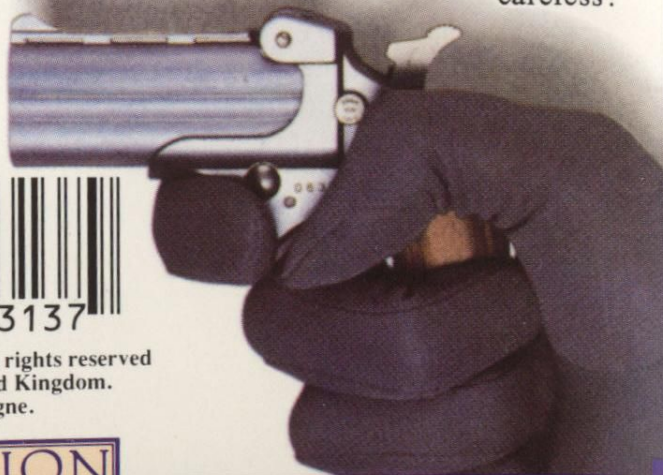
Clues? Or just decoys? You're not even sure the victim was shot.

Could a murderer so crafty be so careless?

They glimmer. They sparkle. They shine. Can they help unravel this tangled tale?



Will this key unlock any clues to the dastardly crime?



EDD 137



© 1986 Activision, Inc. All rights reserved  
Manufactured in the United Kingdom.  
Fabriqué en Grande Bretagne.

**ACTIVISION**  
HOME COMPUTER SOFTWARE