

# M.C.S. STARCROSS

\* \* \*

MASS DETECTOR OUTPUT:

TIME - 2186:104:58923

VALID UNTIL - 2186:104:59287

LEGEND:

↑ OBSERVER

■ ASTEROID

☒ INHABITED ASTEROID

● PLANET

\* SHIP

▲ PREVIOUSLY UNCHARTED MASS

/ VECTOR OF MOTION

INSTRUCTIONS FOR USE:

FIRST, LOCATE YOUR DESTINATION ON THE MAP. THEN, ENTER THE THREE MAP COORDINATES INTO YOUR NAVIGATION COMPUTER BY TYPING:

COMPUTER, RANGE IS (VALUE), THETA IS (VALUE), PHI IS (VALUE).

AS A SAFETY FEATURE, YOUR COMPUTER WILL NOT INITIATE A NEW NAVIGATIONAL PROGRAM WITHOUT CONFIRMATION. YOU CAN DO THIS BY TYPING:

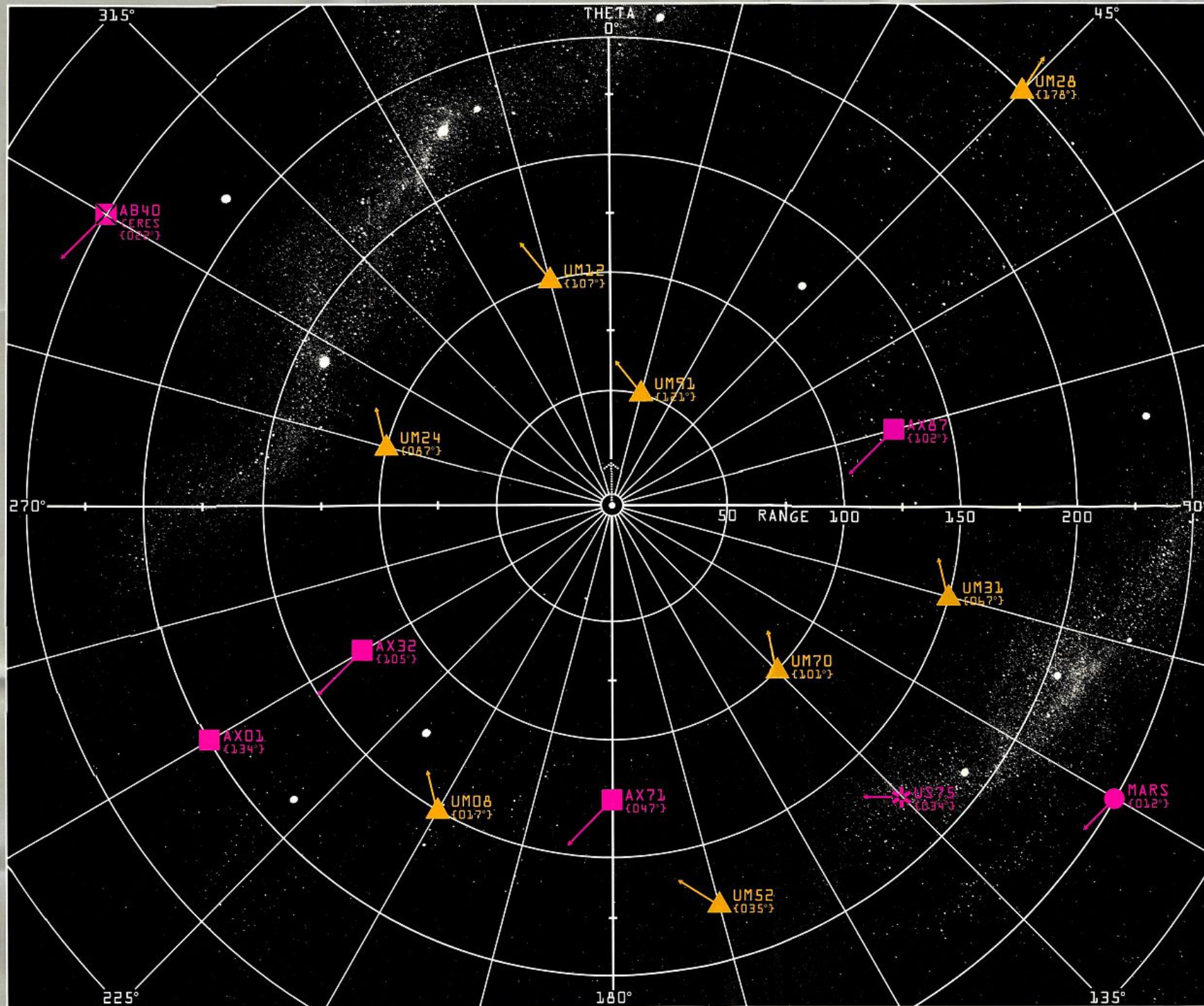
COMPUTER, CONFIRM NEW COURSE.

NOTE:

APPROPRIATE PHI COORDINATE IS PRINTED IN PARENTHESIS BELOW EACH OBJECT.

KEEP SPACE BEAUTIFUL!  
PLEASE USE YOUR TRASH ATOMIZER  
TO DISPOSE OF ALL WASTE.

-INTERPLANETARY ENVIRONMENT ADMINISTRATION



# CROSS SECTION AT THIRD RING

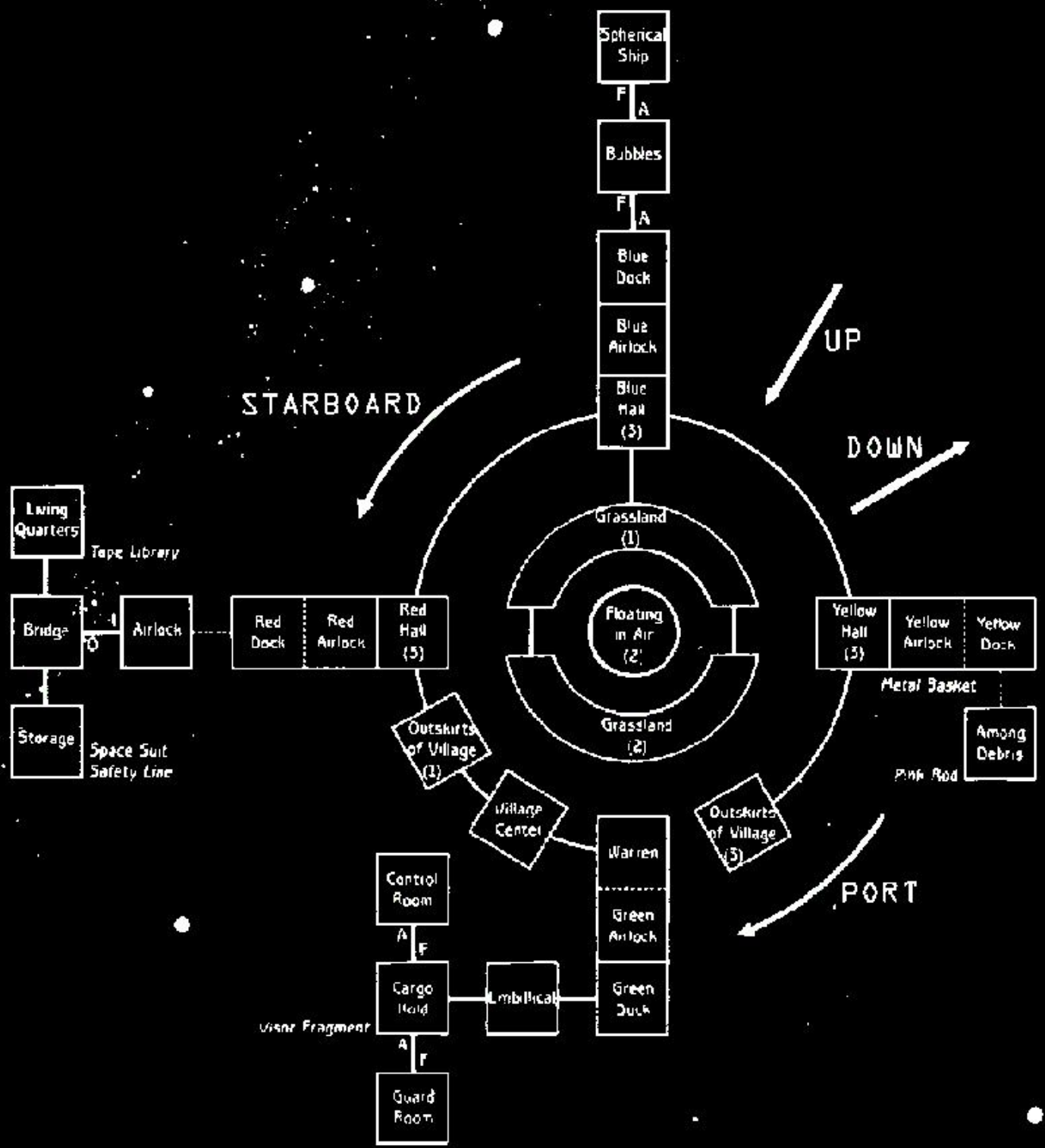
## LEGEND

- NORMAL CONNECTION
- ONE-WAY CONNECTION
- CONNECTION REQUIRING PROBLEM SOLVING

U-UP      F-FORE      I-IN  
 D-DOWN    A-AFT      O-OUT

## NOTES:

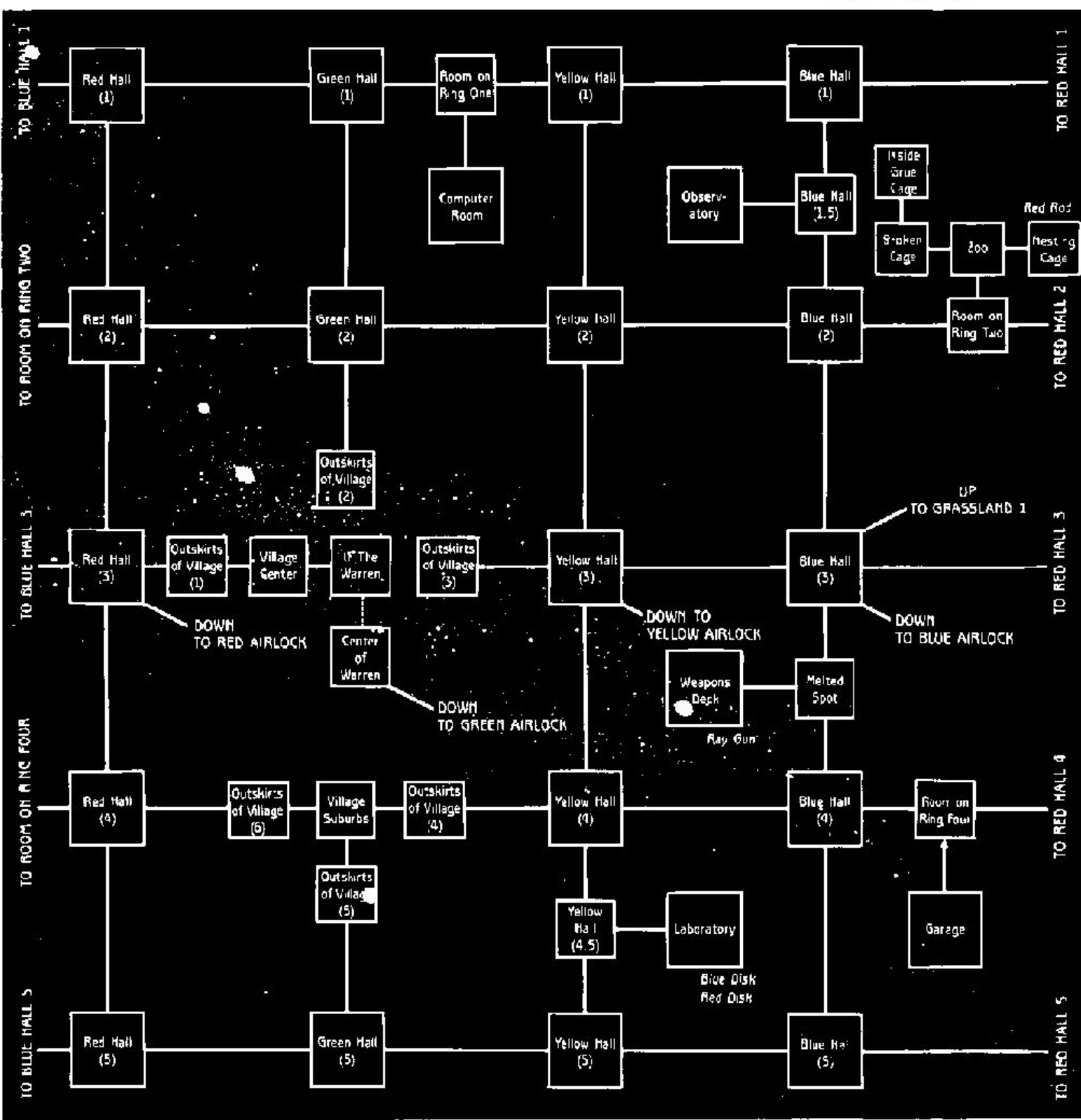
TO AVOID UNNECESSARILY GIVING AWAY PROBLEMS, ONLY OBJECTS IMMEDIATELY VISIBLE UPON ENTERING A ROOM ARE LISTED. WHERE MORE THAN ONE DIRECTION LEADS TO THE SAME PLACE, ONLY ONE IS SHOWN.



← PORT

FORE END OF OUTER REGION

STARBOARD →



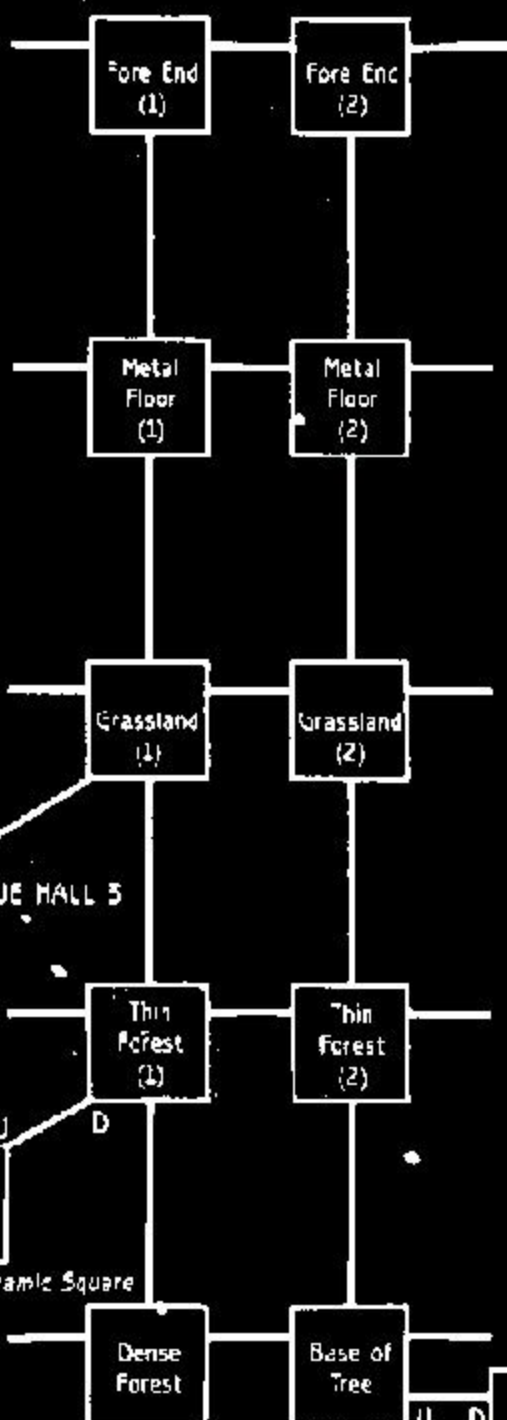
← PORT

AFT END OF OUTER REGION

STARBOARD →

# FORE END OF INNER REGION

PORT STARBOARD



DOWN TO BLUE HALL 5

## STARCROSS

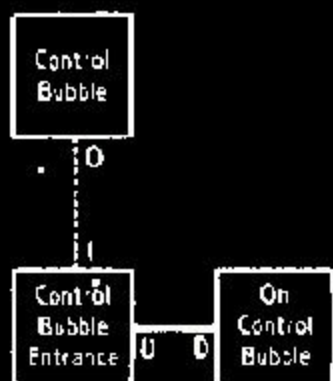
### LEGEND

- NORMAL CONNECTION
- ONE-WAY CONNECTION
- ⋯ CONNECTION REQUIRING PROBLEM SOLVING
- ⇄ CONNECTION REQUIRING PROBLEM SOLVING

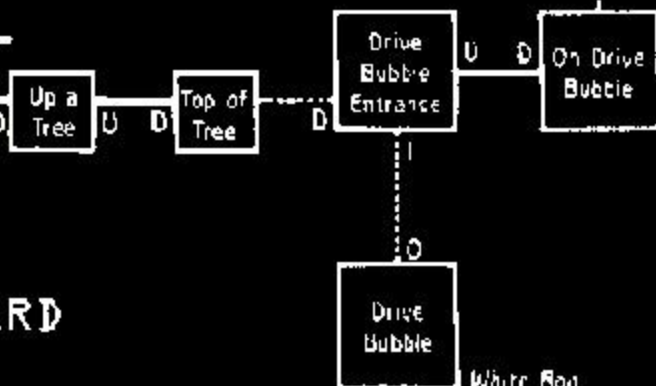
- U-UP    A-AFT  
 D-DOWN    I-IN  
 F-FORE    O-OUT

### NOTES:

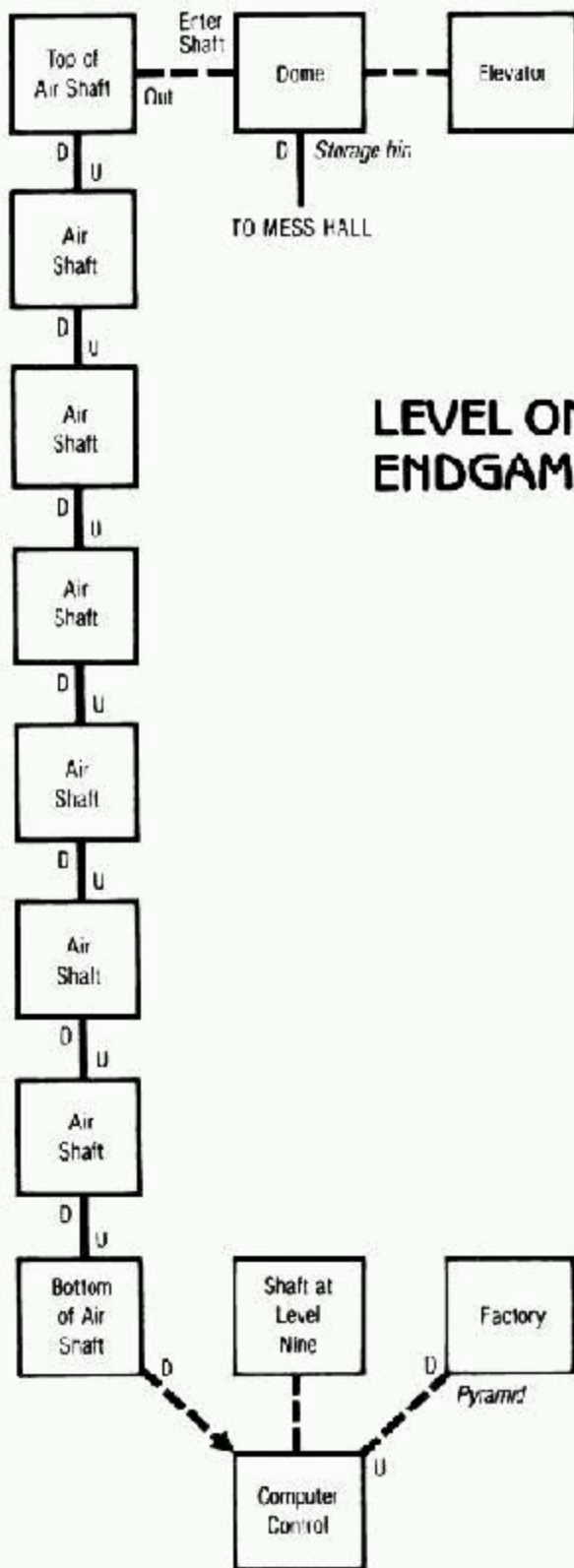
TO AVOID UNNECESSARILY GIVING AWAY PROBLEMS, ONLY OBJECTS IMMEDIATELY VISIBLE UPON ENTERING A ROOM ARE LISTED. WHERE MORE THAN ONE DIRECTION LEADS TO THE SAME PLACE, ONLY ONE IS SHOWN.



PORT STARBOARD



# AFT END OF INNER REGION



## LEVEL ONE, ENDGAME

TO  
DOME

*Cup of coffee*

TO  
LEVEL  
THREE

U

Mess  
Hall

D

Elevator

Meeting  
Room 1

Meeting  
Room 2

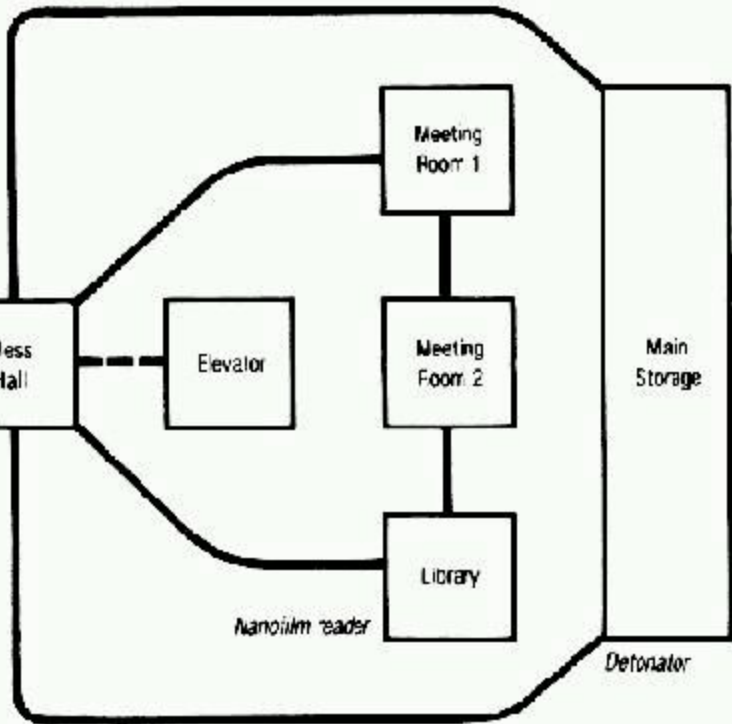
Library

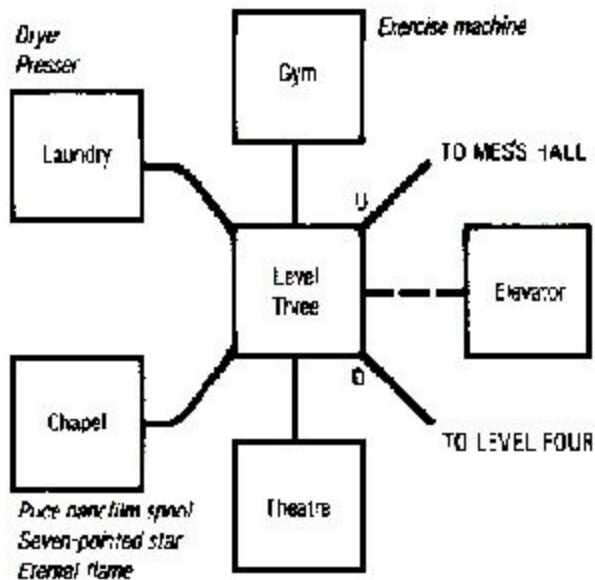
Main  
Storage

*Nanoilm reader*

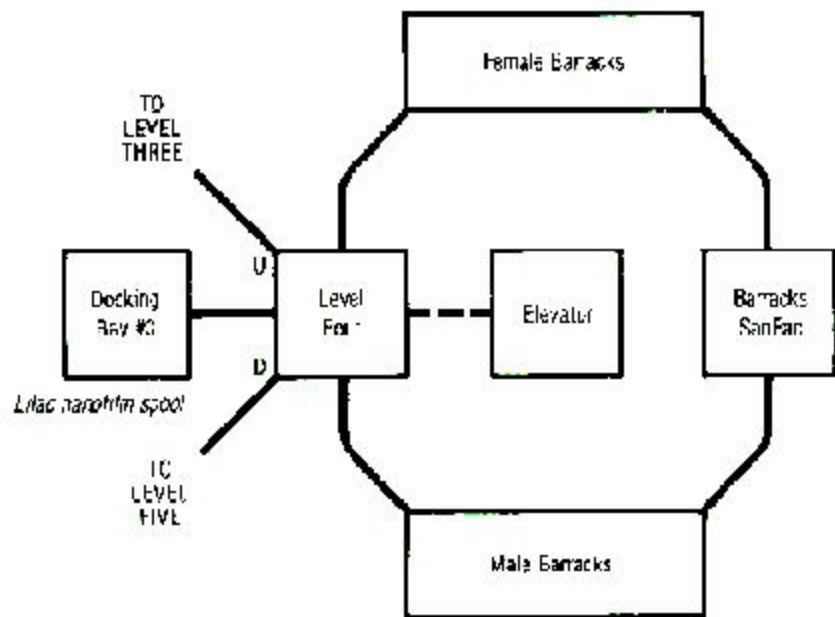
*Defonator*

**LEVEL TWO**





**LEVEL THREE**



**LEVEL FOUR**