

# geoTELEGRAPH

These pages are produced and printed entirely from within GEOS on the Commodore 64 \*

## geoPUBLISH v1.1

**I** At long last the superb *geoPUBLISH* gets a long overdue update - and its a real cracker !!

If you were at the LUCKY Commodore Spring EXPO 2004 in Louisville on the weekend and you saw my demo of Todd Elliott's updated geoPublish V1.1 you have an idea of what it can do. For those of you who weren't there here are the new features. Keep in mind that this is a working initial release from Todd. He has plans to add more features and functionality - including an installer utility to make it easy to upgrade a copy of your geoPublish Version 1.0 to the new V1.1.

### 128k RAM

1. You must have at least 128 KB of AVAILABLE RAM expansion under Wheels to use V1.1. This is a requirement as geoPublish V1.1 loads itself entirely into RAM when it starts up. This virtually eliminates lag times when different modules have to be loaded (moving from Page Layout to Page Graphics mode).

### Four disk drives

2. V1.1 now supports 4 drives. You can run geoPublish V1.1 from any drive (A - D) and access your datafiles on any drive (A - D). There is still the Program Drive (for fonts, desk accessories, etc) and Data Drive (for geoWrite files, etc) issue but now you aren't limited to being able to work on only certain drives. You can also double click a geoPublish Document on Drive D (for

example) and geoPublish V1.1 will load no matter what drive it is located on.

### Page graphics library

3. There is now a Page Graphics Library function that works the same way as the Library in Master Pages and Page Layout modes. You can create a Page Graphics Layout with lines, boxes, special text, save it to a Library file and then load that Page Graphics layout back onto another page in the same or different geoPublish Document.

### JPEG & EPS support

4. You can now paste JPEG and EPS files directly onto a Master Page Mode or Page Graphics Mode page in geoPublish V1.1. Previously we could incorporate these images in our Printouts if we created PostPrint Projects. Now we can paste them directly onto the page in geoPublish V1.1.

### More JPEG & EPS features

5. Up to 104 JPEG or EPS files can be placed on a Page Graphics mode page. Up to 8 such objects can be pasted onto a Master Page mode page.

### ... and more

6. JPEG and EPS images can be constrained or scaled (as opposed to opaque or transparent for other object types) and can also be rotated in 90 degree increments.

### ... and more

7. If you draw a rectangle or a circle on

\* The electronic PDF version of this page was created using PP3 on the c64 and then Adobe Distiller on the PC.

the page you can use its attributes to then assign a JPEG or EPS file to that object.

... and even more !

8. The pattern attribute can be used to set the color of the frame around a JPEG or EPS file

We lose the PRINT function

9. Printing is no longer supported under geoPublish V1.1. You must use Maurice Randall's PostPrint to print the geoPublish V1.1 files as geoPublish does not have the routines to print JPEG and EPS files whereas PostPrint does. The version of PostPrint that Maurice released in March handles most of what V1.1 can do at the moment. A new version was created on May 25 to facilitate the demo at EXPO.

Compatibility

10. If you create a document with V1.1 and incorporate JPEG and EPS images you cannot give that document to a user of geoPublish V1.0 and expect them to be able to use it since the object support isn't there. If you don't use JPEGs or EPS files then there is no compatibility issue.

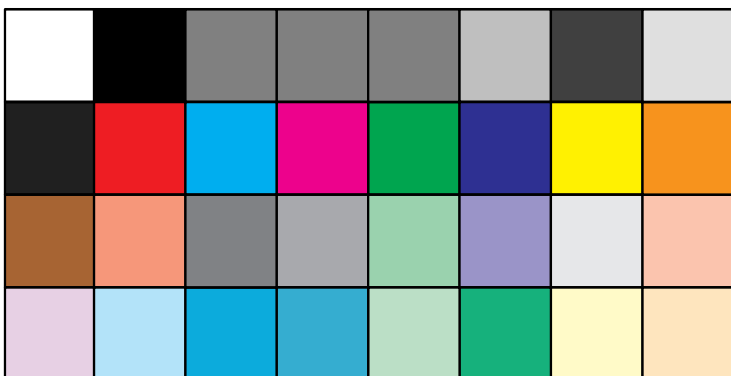
Todd Elliott will continue to work on geoPublish and add features and improvements. His focus in the immediate future will be to create an installer program so that users can order V1.1 and start using it. V1.1 was available at the EXPO with proof of ownership of geoPublish V1.0 and a number of users bought the upgrade from Todd. Todd will announce when he has the installer completed and how to get the upgrade. If you have any questions feel free to contact Todd directly.

Both Todd Elliott and Maurice Randall will add features to their respective programs and make them available to registered owners as time progresses.

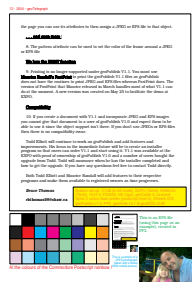
**Bruce Thomas**

**rbthomas59@shaw.ca**

System set-up : C128 (in 64 mode), SCPU (16mb), RAMLink (16mb), 1541-II, FD2000, HD (4gb), geoCable II, Lexmark Optra C colour laser printer (postscript level 2), Wheels O/S, geoPublish v1.0, PP3, geoWrite v2.1 & geoDOS v2.95



*At the colours of the Commodore Postscript rainbow !*



This is an EPS file (using this page as an example), created in PP3.

This is a sample of a JPEG photograph (taken with a Nokia 3650 mobile phone).

