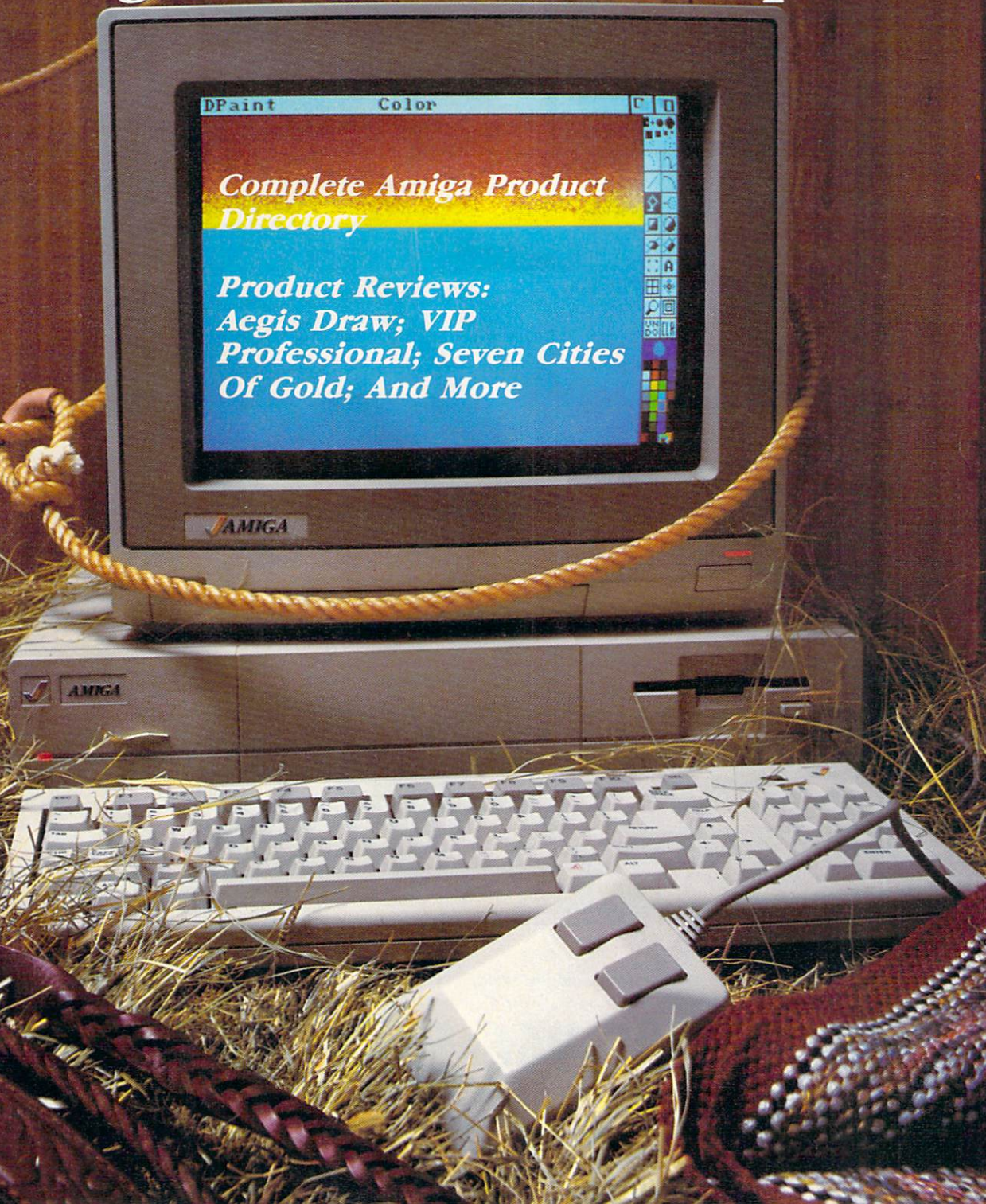


AMIGA

The
Buyer's
Guide

A Redgate Publication November/December, 1986

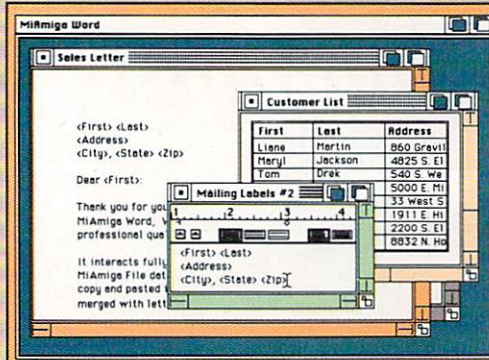
Amiga Hardware Roundup



SoftWood Company presents

Professional Quality Software for your Amiga

MiAmiga Word



Multi-Window Editing of separate documents...
 On-line Spelling Checker allows easy insertion of new words...
 Headers and Footers for all, left facing, or right facing pages...
 Search and Replace through entire document...
 User-definable Glossary with easy insertion of new terms...
 Supports large documents...

Document size limited only by size of disk...
 Cut, copy, paste within and between documents...
 Left and/or right margin justification of text...
 Copy and paste from MiAmiga File database...
 Mail Merge with MiAmiga File database or ASCII file.

MiAmiga File

Easily define column widths, placement and justification...
 Format numeric fields with commas, dollar signs, and/or decimals...
 Transfer quickly between full database and selected records...
 Transfer conveniently from selected record to data entry form...
 Print columnar reports from list including automatic page headings and cumulative totals...

Dwelling	Location	Beds	Baths	Pool	Price
1 House	Santa Barbara	3	2	Yes	\$360,000
2 House	Santa Barbara	3	2	No	\$250,000
3 House	Phoenix	4	3	Yes	\$155,000
4 House	Tucson	4	2.5	Yes	\$110,000
5 House	Santa Monica	3	2	No	\$177,000
6 Condo	Los Angeles	2	1	No	\$95,000
7 Apt.	San Francisco	1	1	No	\$120,000
8 Condo	San Jose	2	2	Yes	\$78,000
9 House	Palo Alto	3	2.5	No	\$225,000
10 Apt.	Santa Barbara	2	1	No	\$120,000
11 House	Santa Monica	2	1	No	\$95,000
12 Condo	Venice	2	1	No	\$88,000

Format mailing labels by positioning fields on form...
 Automatic scrolling of data within a field during data entry...
 Optionally capitalize the first letter of each word automatically...
 Modify form as needed for convenient placement of data...
 Data entry form automatically created by system during database definition.

MiAmiga Ledger

Easily define column widths, placement, and justification...
 Multi-window screen allows convenient access to both Chart of Accounts and Journal Entries...
 Edit/Post of Journal Entries to Chart of Accounts...
 User-definable Chart of Accounts...
 Transfer quickly between full GL database and selected records...
 Zoom feature automatically expands windows to full screen size.

Print columnar reports from list including automatic page headings and cumulative totals...
 Format numeric fields with commas, dollar signs, and/or decimals...
 12 months of prior balance info maintained for each account...
 Both current period and fiscal year-end close... Follows standard accounting practices...
 User-definable custom reports and a full set of standard GL reports.

Account	Description	Type	Opening	Jan 86	Balance
1 100	Cash	A	50,000.00	400.00	50,400.00
2 110	Accnt Receivable	A	1,000.00	100.00	1,100.00
3 120	Sportswear Inv	A	6,500.00	300.00	6,800.00
4 130	Free weights	A	12,250.00	0.00	12,250.00

Tran	Date	Account	Description	Source	Debit	Credit
1	1/1/86	400	Holiday specials	TJD		1,100.00
2	1/1/86	100	Cash	TJD	1,000.00	
3	1/1/86	110	Accnt Receivable	TJD	100.00	
4	2	1/1/86	620	Misc Expense	TJD	100.00



MiAmiga... The Best Friends Your Amiga Will Ever Have!
 Commodore, Amiga, and Intuition are trademarks of Commodore-Amiga, Inc.
 Copyright SoftWood Company, 1986.

805-966-5884

SoftWood Company, P.O. Box 2280, Santa Barbara, CA 93120

Coming Soon from SoftWood:

MiAmiga Investor
 MiAmiga Recievables
 MiAmiga Payables
 MiAmiga Inventory

The Amiga Buyer's Guide

Editor & Publisher: **Ted Leonsis**
Managing Editor: **Thomas R. Kempf**
Creative Director: **Mark S. Ballard**
Art Director: **Patricia N. Walker**
Associate Editor: **Lori Tracy**
Assistant Editor: **Paulette Siclari**
Quality Control Manager: **Ron Errett**
Copy Editor: **Pat Little**

Director Of Manufacturing:
Deborah J. Graves
Typesetting Operations:
Wendy L. McCloud;
Kathaleen S. Ross

Director Of Circulation: **Joseph Sparano**
Circulation Assistant: **Sandi Byrd**

Advertising Sales: **Warren Langer;**
Spencer O. Smith, Warren Langer
Associates, 9320 Northwest 2nd St., Coral
Springs, Fla. 33065, 305-753-4124
Client Services/Advertising Sales:
Sandy Van Salisbury 305-231-6904
Response Services: **Tammy Smith**

Redgate Communications Corporation

President: **Ted Leonsis**
Executive Vice President:
Alfred J. Mandel
Vice President/Chief Financial Officer:
Jeff Parsons
Directors Of Account Services: **Jeff Lea;**
Diane Staley
Account Management: **John Campione;**
Penny Schneck; Betty Clark
Assistant To The President:
Donna M. Philo
Director Of Finance: **Nancy A. Birt**
Comptroller: **Conrad Smith**
Credit And Collections Manager:
Melinda K. Jones
Other Editorial Management:
Paul Pinella; Nan Herlihy
Receptionist: **Karen K. Lindsey**

Cover Photography by:
Rob Downey; Melbourne, Florida

Contents

Feature Article:

Amiga Hardware Roundup	82
------------------------	----

Product Reviews:

Aegis Draw	70
The Halley Project	71
Intellectual Software	75
Seven Cities Of Gold	76
VIP Professional	78

Product Directory:

Business And Professional Software

Accounting	92
Business Graphics	92
Communications	92
Creative	94
Database	96
Integrated	97
Miscellaneous Management	97
Programming	97
Specific Application	99
Spreadsheets	100
Utilities	100
Word Processing	103

Personal And Home Software

Education	103
Games And Entertainment	105
Personal And Home Finance	107
Other Software	107
Publications	108

Hardware And Peripherals	108
--------------------------	-----

Accessories	110
-------------	-----

Books	110
-------	-----

Advertiser Index	106
------------------	-----

Entire contents copyright 1986 by Redgate Communications Corporation. All rights reserved. No part of this publication may be reproduced or utilized in any form or by any means, electronic or mechanical, including photocopying, recording, or by any information storage or retrieval system, without permission in writing from the publisher. The Amiga Buyer's Guide is an independent journal, not affiliated in any way with Commodore Business Machines, Inc. and is used by permission. Redgate Communications Corporation is not responsible for the accuracy of product listings and descriptions. Some of the views expressed by contributors may not be representative of the views held by Redgate Communications Corporation. Redgate Communications Corporation editorial and business office: 3381 Ocean Drive, Vero Beach, FL 32963, 305-231-6904. Unsolicited manuscripts and other materials will be returned only if accompanied by a self-addressed stamped envelope. The publisher is not responsible for unsolicited materials. The Amiga Buyer's Guide is published by Redgate Communications Corporation at 3381 Ocean Drive, Vero Beach, Florida 32963, under an agreement with Contemporary Marketing, Inc. Redgate Communications Corporation also publishes The Apple II Review, The Macintosh Buyer's Guide, The Marketer—The Magazine For Apple Computer Dealers, COMPAQ, FYI—The Harris Magazine For Information Management, LIST, Wang Solutions, a series of computer books, and other properties. For more information contact Ted Leonsis, Redgate Communications Corporation.



Expansion Memory Without The Wait.

Introducing *Alegra*: The Amiga™ Memory Expansion Unit from Access Associates.

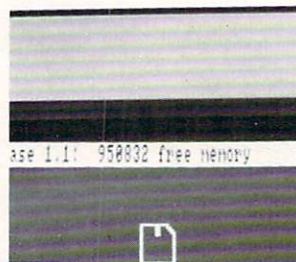
512 K now.

Now you can add 512 K bytes of external memory to your Amiga. In the smallest package available, a footprint only 3/4"-wide. And Alegra's no-wait-state design lets your Amiga operate at its intended speed. No delays. With Alegra you get the benefit of fast memory at a surprisingly economical price. AND, BEST OF ALL, IT'S AVAILABLE NOW.

Upgradeable to 2 MB later.

If you'll need 2 MB of memory in the future, Alegra is still the right choice now. Our 2 megabyte upgrade (using 1 megabit DRAMs) will give you the memory you need in the same compact package.

Ask for Alegra at your quality Amiga dealer.



Total system memory is approximately 1 meg with the addition of our 512 K Alegra (depending on specific hardware configurations).

ACCESS ASSOCIATES

491 Aldo Avenue
Santa Clara, CA 95054-2303
408-727-8520

GIVE YOUR AMIGA® SOME...

IMPACT!™

Business Graphics for the Amiga®

GRAPHICAL DATA MANAGEMENT FOR POSITIVE RESULTS!

GRAPH BUILDER: Using the Graph Builder you can create a variety of charts, including: Bar Charts, Line Charts, Area Charts, Scattergrams (also called star charts or scientific charts), and Pie Charts. Bar, Line, and Area charts can be stacked, overlapping horizontal, or displayed in 3D. Pie charts can be exploded or displayed in 3D. You may choose colors, patterns, and reverse axis polarity. You may specify various X axis step rates and each graph can be resized. Graphs can be printed or saved as slides.

TABLE BUILDER: IMPACT includes a specialized text editor for use in creating charts and slides. The editor includes multiple fonts and point sizes, right, left, ragged, and center justification, bold, italic, underlining, and shadow effects. All standard text editing features are supported via control characters. Text can be moved and/or resized to fit into a slide or graph.

ICON BUILDER: You can create icons for use as stamps or in charts and slides. The Icon Builder includes freehand drawing, arc, and line. You can flip the icon right or left, rotate it, and shift it right, left, up, or down.

SLIDE BUILDER: The heart of IMPACT allows you to combine charts, tables, and icons with a series of structured drawing tools that include: Lines, Text, Grids, 2 types of Circles, 3 types of Arcs, 4 types of Rectangles, Gridsnap, and freehand draw. Up to 16 colors (out of a possible 4096) can be used along with 16 mosaic patterns. All slides are created using 640 × 200 resolution. Full editing of each slide is allowed, including: Copy, Add, Delete, Move, Resize, and Explode.

SLIDESHOW: Combine slides into a graphics presentation using the Slideshow builder. Many types of special effects are available, including Wipe Right, Wipe Left, Wipe Up, Wipe Down, Spiral In, Spiral Out, Fade In, Fade Out, Random, and Trickle. When creating the slide show, you may adjust the length of time that each slide is displayed and how fast the effects work.

AVAILABLE AUG. 15, 1986 — SEE YOUR DEALER

AEGIS
DEVELOPMENT



IMPACT is a trademark of Aegis Development. AMIGA is a trademark of Commodore-Amiga. SONY is a trademark of Sony Corp.

Aegis Draw CAD drawing package

512K Amiga; external drive.

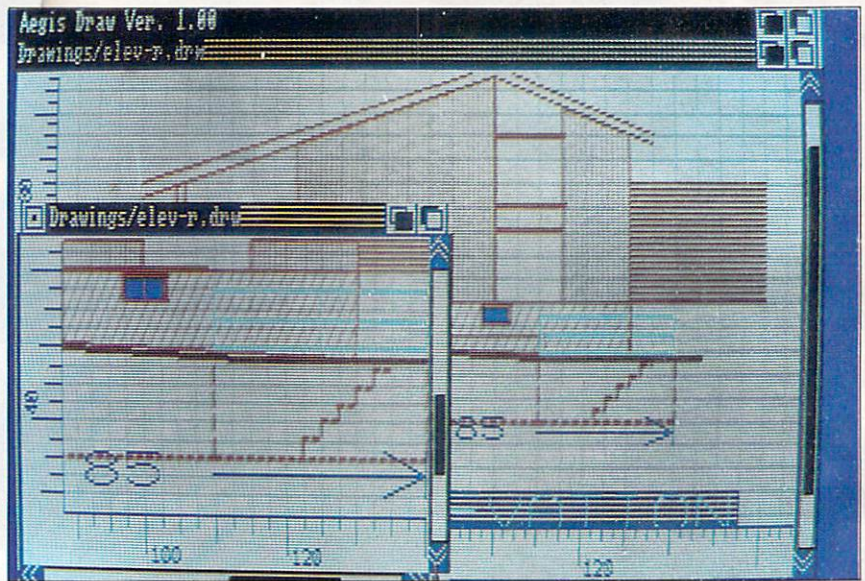
In being first to market with a computer-aided design (CAD) package for the Amiga, Aegis may well cause competitors to rethink the programs they have under development. Although pricing and ease of use would seem to position *Draw* as an entry-level CAD program, the capabilities it contains elevate it to a much higher and, therefore, more serious level.

For those not familiar with the concept of computer-aided design we'll point out that *Draw* is not a painting program such as *Aegis Images* or *Graphicraft*. CAD packages are for making finely detailed drawings such as schematics, blueprints, charts and designs. As such, they are of paramount interest to designers, architects, engineers, draftsmen, students and to those of us who want to know what CAD is all about.

After booting from the Workbench, the pull-down menus, options and tools of *Draw* may make it appear to be a painting program. It is easy to use, but don't let the seeming familiarity fool you. Early in its outstanding documentation, and at intervals thereafter, it is stressed that what you see on your monitor screen is not your actual drawing, only a representation. Your actual drawing is the hard copy you will eventually make with your printer or plotter.

If, as an example, you draw a square using triple-width lines, the vertical lines will be thinner than the horizontal lines. This is due to the shape of the pixels created by the Amiga. If your drawing is sent to a plotter, the lines will be of equal thickness.

The default screen for *Draw* displays a grid that may be turned off. At the left and bottom bor-



Aegis Draw from Aegis Development

ders are rulers. These can also be turned off or changed from metric to English measurement systems.

Because of the grid, drawing tools can be made to behave differently than what you're probably accustomed to; with the grid and Grid Snap on, you draw a square by selecting Square from the Tools menu. As with a painting program, move your cursor to the starting point, hold down the left mouse button, then drag the mouse to open the square to the size you need.

Grid Snap causes the sides and corners of your square to correspond to the nearest grid lines and intersections, allowing for a neater drawing that is closer to scale.

For scaling, there is another tool you'll find useful. When you've drawn your square, go back to the Tools menu and select Measure. Position your cursor at the beginning of one side of your square and drag it to the end of that line. A faint "ghost line" appears, aiding in accurate positioning. Now click the left mouse button, and the length of the line you measured is displayed in familiar blueprint style:

← 40' 9" →

Because *Draw* was constructed to conform to the Amiga's intuitive user environment, you work within a window that can be sized and moved, similar to the windows on the Workbench. *Draw* also supports multiple windows. With 512K of RAM, however, the limit is two.

When using windows, it's possible to keep your original drawing, assuming it's a floor plan, in one window. In the second window you could work on a clone of that drawing, trying modifications or perhaps adding wiring diagrams.

Draw also allows for layering. In our example, the floor plan would be the first layer. Over it, using another color for clarity, we could layer the wiring diagrams and, over that, the plumbing. A pop-up Requestor window tells you which layer is currently active and allows you to change to another layer, if desired. In this way, you could load in a complete drawing and modify the electrical layer without disturbing either the basic plan below it or the plumbing diagram above it. If you can find enough things to add to your plan, *Draw* will support up to 256 layers.

The information for your draw-

ings is held in a kind of database. In our first example, to keep things simple, the square of a record and the field of that record contain information on the sides and center of the square.

What this really means is that shapes created with *Draw* can be relocated on screen by dragging them with the mouse. In dragging the square, you have, in effect, edited the field pertaining to the center of the square in relation to the Cartesian coordinates of the screen. But you don't have to think about this. The program does that for you.

Draw recognizes a shape in the same way that a word processor recognizes a word or a paragraph. For this reason, it is possible to cut, copy, paste and delete your drawings. If you want to think of *Draw* as an image processor, you're probably right.

No feature of *Draw* is more spectacular than its *Zoom* option. Using this option, you can enlarge any part of a drawing and see it in its proper proportions. Unlike the *Fat Bits* feature of painting programs, a fine line enlarged 50 times is still a fine line.

To illustrate, add a filing cabinet to your floor plan. Then, using *Zoom*, enlarge only the cabinet. From the menu, select *Text*, create a label that says "Past Due" and paste it on the cabinet. Now zoom out, either in stages or to the full extent of the drawing. If you look very closely, you'll see your label represented—though unreadable—exactly where you placed it.

What can you do with an unreadable label? Remember what was said earlier: This is only a representation of the actual drawing. Printed or plotted to the proper scale, the smallest details in your drawing will be clear and sharp.

There are almost no limits to the *Zoom* feature. Imagine a

drawing of Earth as seen from space. In stages, you could zoom in to view continents, countries, cities, houses and the license plate on the car sitting in your driveway. Given enough memory, this is entirely possible.

For a hard copy of your drawings, a plotter is best because it can provide a larger image that most printers. *Draw* will support any plotter, and easy-to-follow driver routines are listed in the documentation. Because plotters work slowly, choosing *Plot* from the menu causes your drawing to be written to disk in a plotter file. Because of Amiga's multitasking capabilities, the actual plotting will not tie up your computer and you can begin to create your next drawing.

While a plotter accepts your total drawing, a printer uses only that portion showing on screen, in the manner of a screen dump. To print the entire drawing and to render all its fine detail, it is recommended that drawings to be printed be enlarged with the *Zoom* feature. In this way, portions are printed separately. They can then be pasted together to form a detailed whole.

The possibilities of using *Draw* seem almost endless. The examples given here represent things I have done and things suggested in the documentation. Your own imagination and the needs of your craft or profession will undoubtedly suggest more.

Although it seems to have been positioned as an entry-level CAD package, we find *Draw* to be a true heavyweight, containing most of the features found in *AutoCAD* and *VersaCAD* for MS-DOS computers—at a fraction of their prices.

—Ervin Bobo

\$199.95 retail
Aegis Development; 2210
Wilshire Blvd., Ste. 277; Santa
Monica, Calif. 90403;
213-392-9972

The Halley Project: A Mission In Our Solar System Educational game

256K Amiga.

The first thing you should know about *The Halley Project* is that it has little to do with the recent visit of Halley's comet. Because it is not topical, in fact, interest and excitement generated by the game should last for a long time to come.

The second thing to know is that *The Halley Project* was created by Tom Snyder and produced by Mindscape. Snyder believes the output of a computer should have lasting value, and Mindscape is responsible for the dazzling *Amiga Tutorial*. Together they have created one of the best games of the year, complete with stunning graphics, demands upon new reflexes and, underneath it all, some very painless education.

The program's title screens appear after booting, looking as if they were produced for a motion picture. As credits appear against a field of rushing stars, your Amiga begins to sing to you. Though the digitized sound is not exceptionally clear at this point and none of the sounds take advantage of the stereo capability of the Amiga, it is a nice surprise.

Playing the enclosed cassette tape gives you the details of your mission, or you can read them off the screen. There are 10 missions in all, each more difficult than the last. The object is to accomplish each one in the least possible amount of time.

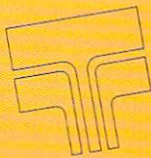
On your first mission, you blast off from your base on Comet Halley, navigate to Earth, make a landing and then return to base. While this may seem simple, it is not. *The Halley Project* simulates our solar system in great detail, and nothing you learned in *Space*

DATAMAT™ puts up to \$100 back into the system.

Choose DATAMAT fully relational database management systems and get a \$50 or \$100 rebate check towards the purchase of a Commodore Amiga.

It's the next generation in database management. DATAMAT's state-of-the-art technology offers advanced versatility that integrates with virtually any existing hardware system. Take advantage of this exceptional rebate offer and you'll save on your Commodore Amiga. The choice is yours with DATAMAT — options designed to suit your specific needs.
From \$249.95 to \$349.95.

- Images in IFF format, display with text/data/voice
- Easy applications without program coding — from simple phone/ mailing list to research and organization-wide information management.
- Automatic self-running tutorials for personnel training.
- Companion software with identical user-interface for MS DOS, XENIX, UNIX, VMS, and others.



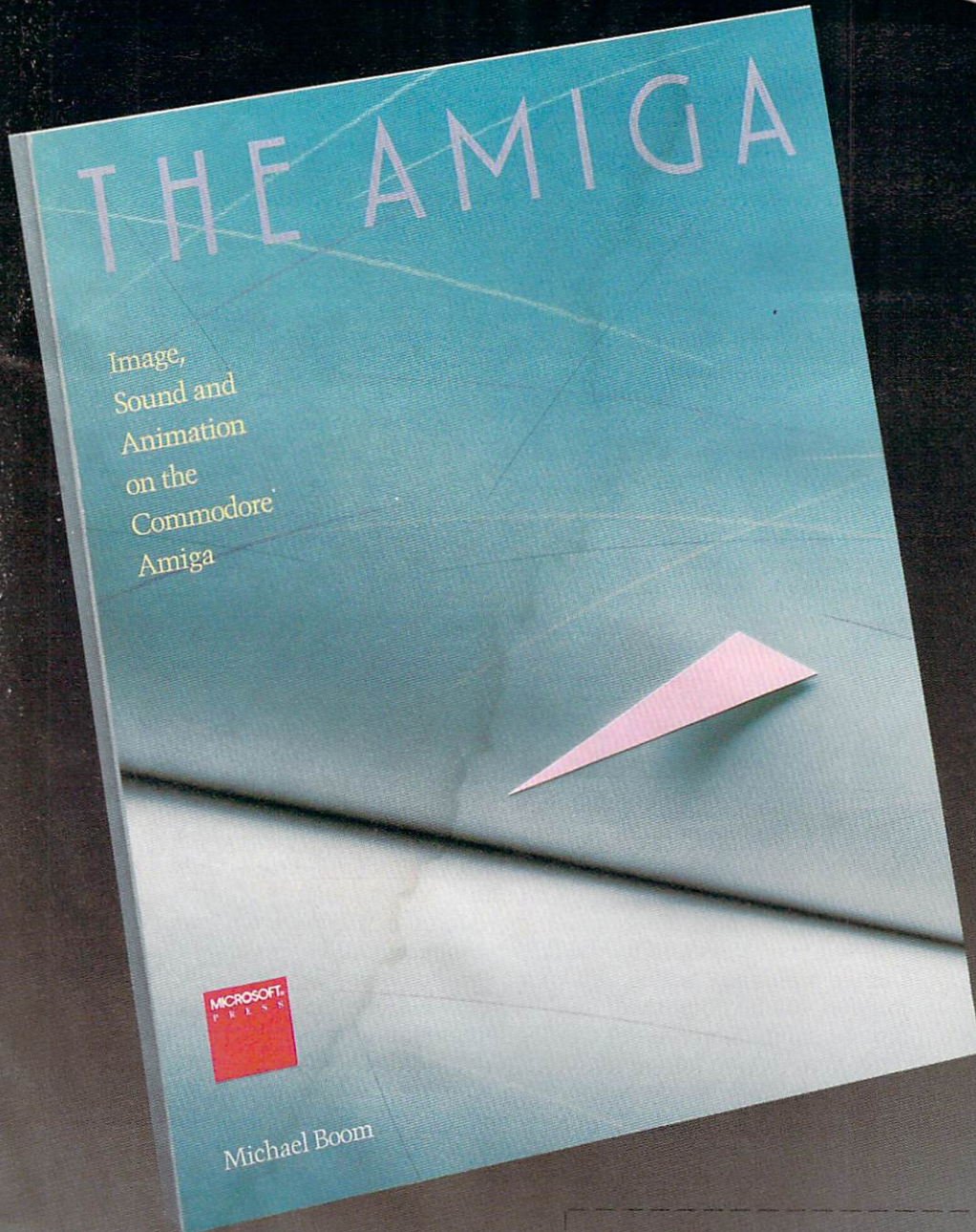
**TRANSTIME
TECHNOLOGIES
CORPORATION**
810 Sheridan Drive
Tonawanda, NY 14150-7871
(716) 874-2010

Datamat is a trademark of Transtime Technologies Corporation
AMIGA is a trademark of Commodore Amiga, Incorporated
MS-DOS & XENIX are trademarks of Microsoft Corporation

UNIX is a trademark of Bell Laboratories
VMS is a trademark of Digital Equipment Corporation

Available at your local Amiga dealers. Inquiries welcome.

Fire Your Imagination!



Are you a graphic artist? An audio/video specialist? A computer enthusiast? Just as the Commodore Amiga dazzled the computer world, **THE AMIGA**—this sizzling new book from Microsoft Press—will spur your imagination to new horizons of creativity. If you have some BASIC programming experience, get ready to produce amazing results with your 512K Amiga that go far beyond the beginner's level.

- Explore the possibilities of developing sophisticated visual images and learn how to easily enhance the power of the Object Editor
- Reproduce real and synthesized sound with the Amiga's built-in synthesizer
- Create animated sequences and record them on videotape

And there's more. In addition to information on making the most of Amiga BASIC, you'll discover advanced techniques for using some long-awaited, sensational software—Deluxe Paint, Musicraft, and Deluxe Video.

THE AMIGA by Michael Boom. Your guide to mining the rich artistic depths of this fantastic machine. **\$19.95**

YES... please send me _____ copies of **THE AMIGA** at \$19.95 each. Please add \$2.00 per book for postage and handling; CA residents add 6.5% sales tax; WA state residents add 8.1%; MA and MD residents add 5%. Allow 4 weeks for delivery.

Name _____

Address _____

City _____ State _____ Zip _____

Payment: Check/Money Order VISA MasterCard American Express
Credit Card No. _____ Exp. Date _____

Send order to: Microsoft Press, P.O. Box 1532, Hagerstown, MD 21742

Toll-Free Ordering Number: 800-638-8080; in Maryland, call collect, 824-7300. **AMGA**

**MICROSOFT
PRESS**

Reviews

Invaders or *Defender* is going to be of any help to you.

As the mission begins, your control panel shows elapsed time, speed and distance to target. The panel, which is fully operational, can be activated by using the mouse, and all its switches and levers really work. Click on the speed lever while in high thrust. It will move to the low position. Click on either the left or right direction, and the corresponding switch moves.

To find your exact location, click on radar. The screen changes and shows you an overhead view of the solar system. You are in the center. Other visible objects are the sun and planets. For your first mission, you have to know that Earth is the third planet from the sun. Using the Zoom feature, you expand the solar system until your target is at the edge of the circular screen. This allows your on-board computer to show the distance in kilometers and in which constellation your target now resides.

Navigation is based on the constellations. To help you, there is an overlay strip showing star patterns. Match the necessary constellation on the strip with the view through your port. The extra point of light, always in the center of the view port, will be your target.

Because time is important, you'll have to decide whether to cruise normally—up to 300,000 kilometers per second—or to use translight speeds. Faster than light, distance traveled shows up on your main screen while Klaxons sound, rockets roar and a kaleidoscope of color sweeps by. You'll have to be quick leaving translight mode, however. If not, you'll overshoot your target and have to find it again.

Once close to the target, it is identified on a message strip. This identification persists only as long as you keep the target centered on your screen. In the case of Earth, the planet will gradually

grow until it becomes a blue sphere. The moving dot near it is the moon.

At this stage, the mechanics of orbital motion come into play. Earth is either advancing or receding, relative to your position. In addition, it will go through phases of illumination as it orbits the sun. Sometimes the Earth is only a faint shadow against the blackness of space. As you come closer, relative motion increases. You'll have to be quick with your speed controls to avoid having the planet whip by you.

Because each planet has a different mass and gravity, and since the program takes those factors into account, there is no landing procedure that will work for every mission. Your orbital velocity and altitude will vary with each planet. Fortunately, you are given opportunities to refly any of the missions in order to improve your time.

As you reach the point of orbital insertion, you hear the strumming of a guitar. This is an incongruous sound, very much out of place on the command deck of a space ship. Almost any other audible clue would have been better.

To land, you must orbit until you are over a base, signaled by a loud beep. At that moment, click on the land switch.

If you land successfully, you'll receive a message telling you your mission was accomplished. You'll also be given your elapsed time. This time will be posted on a main scoreboard, along with scores of other missions.

On your view screen, you'll see a landscape that is representative of your target. These landscapes are not fanciful drawings, but superb renditions based on the latest photos and theories. These views, as well as that of the control panel, are reason enough to pull out the superlatives and liken the graphics to those found in the *Amiga Tutorial*.

To complete your mission, you

must now return to Comet Halley. This is much easier, since you merely locate it and fly to it. There are no involved landing procedures, and, once back, you may depart on another mission.

Other missions will not be as simple as the first one, and they must be flown in order. The only exception is reflighting a mission that has already been completed.

You may be told to land on a planet that has no atmosphere, or on a moon that has no atmosphere. Information necessary to define your target will not be found in the documentation. We consider this a plus factor. Any game that sends you to the encyclopedia to further your fun is worth having, and in navigating by the constellations you will soon be able to identify the real things.

All motions of objects within our solar system are correct, as indicated by their phases of illumination and darkness, by the transit of the moon across Earth or the Earth across the sun, and all distances are to scale. Once you've made a trip to Earth, you'll be amazed at how long it takes to get to other planets.

We recommend this game highly. *The Halley Project* is fun for anyone over the age of 10 and educational as well. Once you've completed all its missions, turning in your best times becomes the major challenge. You may mail these scores to Mindscape. Those with the shortest completion times become competitors in a contest. First prize is a trip to Walt Disney's Epcot Center in Florida.

Almost as exciting is learning that *The Halley Project* is actually a qualifying run. Upon receipt of your best scores, Mindscape will inform you of the prime mission!

—Ervin Bobo

\$44.95 retail
Mindscape, Inc.; 3444 Dundee Rd.; Northbrook, Ill. 60062; 800-221-9884 or 800-942-7315 in Ill.

Intellectual Software Educational aids for Amiga users

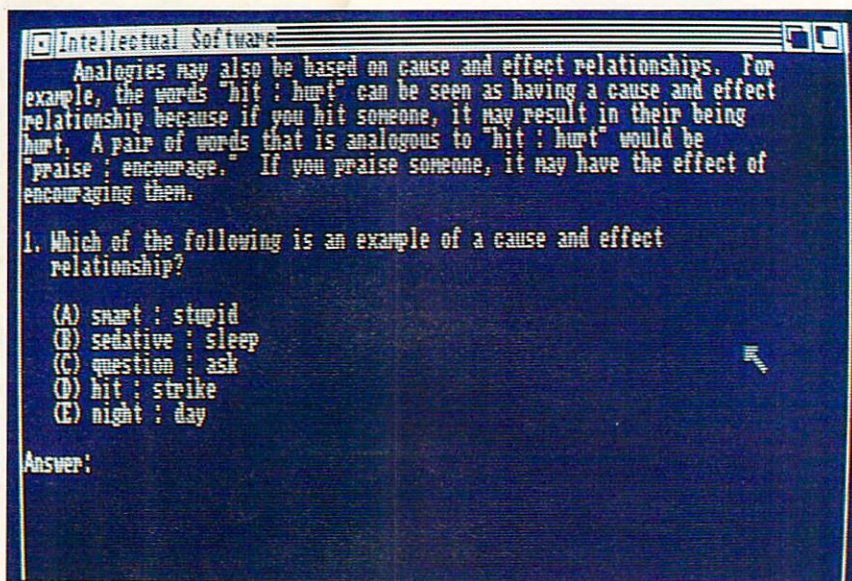
256K Amiga.

The educational software category for the Amiga is growing. The most comprehensive selection of educational packages we've found is the series from Intellectual Software, a division of Queue, Inc. in Bridgeport, Conn.

The programs we reviewed consist only of text on screen and use none of the Amiga's amazing graphic capabilities. Although the aim of educational software is to educate, not entertain, some entertaining aspects might be welcome. After all, making learning fun is something the Amiga does very well. Finding no graphics in this series was a disappointment, because the machine has great potential in the classroom, where pop and flash can hold a child's attention longer than simply text on screen.

Otherwise, the programs were fine. A subseries of programs to use as SAT (Scholastic Aptitude Test) study aids was especially good, and the questions were challenging. According to the vendor, research has shown that most students benefit appreciably by following the procedure used in the series. That procedure consists of learning a systematic approach to answering each kind of question and practicing with numerous sample items modeled on those found in the actual SAT.

The programs are serious in nature and designed for particular applications. There are 33 titles—ranging from *Reading Adventure I*, for elementary school students, to *Starting A New Business*, for adults. Language programs include several levels of French and Spanish. (See complete listing on page 105).



Analogies I from Intellectual Software

The best things about the entire series are its variety and consistency. A student need only learn how to use one program to be able to test or develop skills in a variety of subject areas.

We selected three programs for review that we feel are representative of the entire series: *Analogies I*, *French Grammar I* and *World Geography Adventure IV: Asia*.
Analogies I

An analogy is the expression of a relationship between things that are otherwise dissimilar. Analogies are often used to test general knowledge and the ability to see connections and similarities between words. Since words frequently have more than one connotation, analogy problems require flexibility of word usage and recognition.

Analogies I, one of the programs in the SAT preparation subseries, leads students through a step-by-step process for solving analogy problems. The program requires that students solve each analogy in two steps: by selecting the "formula sentence" that best expresses the relationship between two key words, and by selecting the word pair among the answer choices that best

expresses a similar relationship.

Such rarely used words as olfaction, sycophant and ascerbic are used in the exercises, so students are able to increase vocabulary skills as well as test their abilities to determine the relationships between words. This program should be good preparation for taking the SAT.

Analogies I is organized into 10 lesson modules and includes about 60 analogies.

\$65 retail; two disks

French Grammar I

French Grammar I is designed specifically for students who have had only one year of French. Even so, it is simple enough for use by students who haven't studied French, as long as they've studied another foreign language. If you haven't studied French but are bilingual, you may still be able to get through *French Grammar I*.

French Grammar I includes 10 lesson modules. Topics covered are: Gender of Nouns I and II; Gender and Number; Plural of Nouns; Nouns and Articles; Definite Articles; Prepositions; Avoir and Etre; Idioms with Avoir; and Il est, C'est.

\$34.95 retail

World Geography Adventure IV: Asia

In *World Geography Adventure IV*, students explore Asia on a treasure hunt, earning points by correctly answering geography questions. The more questions the students answer correctly, the more treasures they find.

The program is structured to encourage students to play the game repeatedly. Answers to questions are not included in the program or manual, and the only way to go back to a question and try again is to play the game again. The vendor maintains that students are more likely to remember the facts presented in the program if they discover the correct answers themselves, using a map, atlas, other reference books or through discussions with other students.

This may be true in a classroom situation, but not having the correct answers for home use is frustrating. A child may not have access to the resources available in a classroom when using the program at home. Though each incorrect answer branches to an explanation of why the answer is incorrect, an optional feature that would allow students to go back and try again without restarting the game is sorely needed.

The program focuses on 41 countries in Asia and consists of 41 short chapters. Each chapter includes one to five multiple-choice questions on the country being explored. The countries include Afghanistan, Bhutan, Indonesia, Kampuchea, Oman, Saudi Arabia, Sri Lanka, the Soviet Union and Yemen.

—Lori Tracy

\$59.95 retail
Intellectual Software, a division of Queue, Inc.; 562 Boston Ave.; Bridgeport, Conn. 06610; 800-232-2224

Seven Cities Of Gold Adventure game

256K Amiga.

Seven Cities Of Gold is just the kind of game that you can lose yourself in, literally. In fact, you can even lose your life if you're not careful.

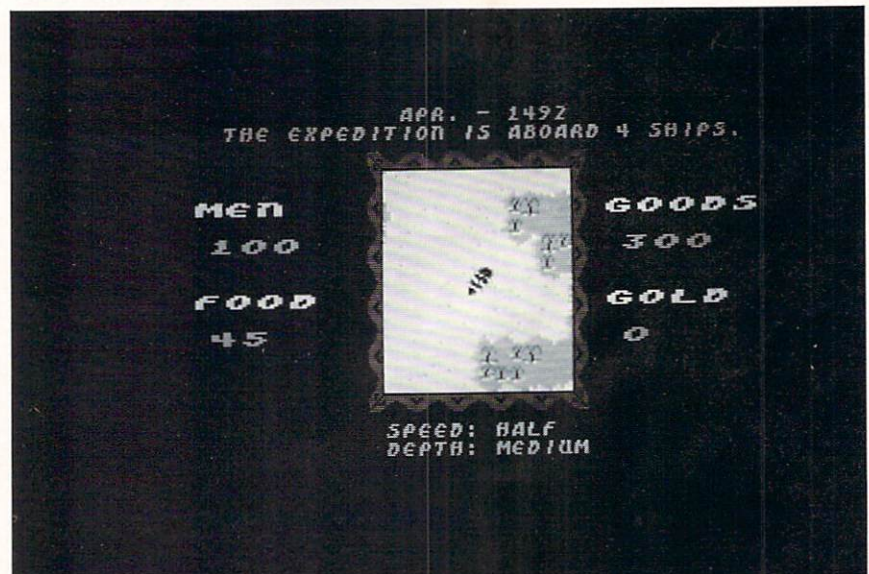
You begin the game by putting yourself in the place of a 15th century Spanish explorer with one goal in life: to find the fabled Seven Cities of Gold. Your obsession with these seven kingdoms began, according to the manual, when an old waterfront seaman told you the tale of seven bishops: "Christian men who had been blown far off course into an unknown realm and who established seven kingdoms whose splendor ranked with the reign of Solomon."

Before you can begin your quest, you need to take care of a few minor housekeeping duties. It's necessary to create a Historical Map Disk to record your travels. After using Kickstart, just insert the *Seven Cities* disk into your Amiga's disk drive. When the program finishes loading, use

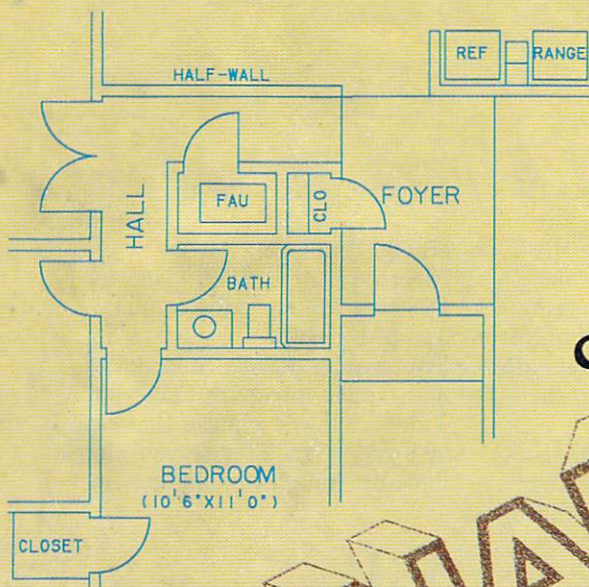
your joystick* (or the keyboard) to move the selecting highlight to "Make a Historical Map Disk," press the joystick button and follow the directions. You're ready to begin your search for the Seven Cities of Gold.

All you need now is the funding and equipment to carry out your quest. Of course, you need an audience with the king and queen, and this is where playing the game begins. You have four choices of skill level: observer (demo), novice, journeyman and master. It's really not necessary to choose the observer level; it's much better to jump right into the game and choose novice. Otherwise you won't get a royal audience, and you get automatic funding for your expedition.

Now that you've got the backing of the court, your next step in Europe is The Outfitters. Food is bought and bartered for in relation to the number of men in your expedition. First decide how many men you want, then how much food to take along. Experiment with the two quantities at first. Take as much food as you can; you'll need it for long expeditions on land. Be careful about the amount of goods you take. Too



Seven Cities Of Gold from Electronic Arts



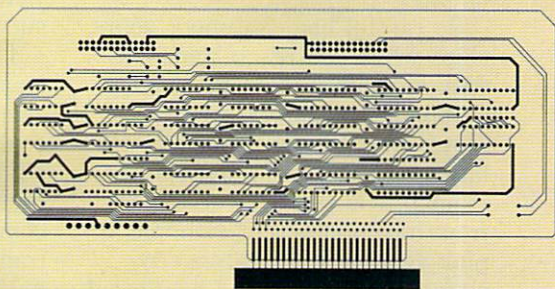
Finally,
a proven
CAD system for the Amiga

FROM MICRO-ILLUSIONS

DYNAMIC-CAD

What AutoCAD* can do for the IBM*, Dynamic CAD can do with the Amiga... and a great deal more for less than a fourth of the price!

PRINTED CIRCUIT ARTWORK



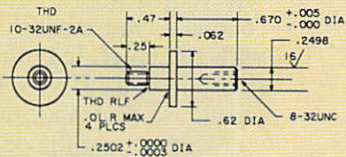
E

merging from years of successful problem solving applications in piping, and electronics for the aerospace industry, DYNAMIC CAD has brought a highly advanced and powerful CAD system together with today's most dynamic and versatile micro-computer, the Amiga. DYNAMIC CAD takes full advantage of Amiga's extensive capabilities with color, multiple modes of resolution, mouse functions, and easily accessible pull-down menus.

This is not some promised "vapor-ware." DYNAMIC CAD exists now and comes to the Amiga with a proven track record. The time and money-saving applications of DYNAMIC CAD for engineers and architects are truly astounding. Here is an advanced, 2-D drafting system with isometric capabilities that can be combined with many models of printers, plotters, and digitizers. In getting started you'll have the support of an extensive manual written in understandable English along with working examples as tutorial lessons.

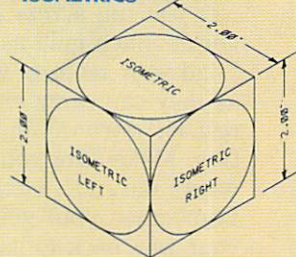
WHAT DYNAMIC-CAD CAN DO FOR YOU

- D·C gives you all the expected CAD functions of zooming, rotating, panning, group functions and menu driven features.
- D·C brings you professional CAD capability tested and proven in the production of tens of thousands of drawings.
- D·C will liberate you from the need to draw free hand.
- D·C has net listing capability from your schematic.
- Schematic comparison to your printed circuit artwork for continuity check.
- D·C can produce isometric views.
- Mil-Spec quality Leroy® fonts.
- Automatic line dimensioning.
- D·C includes a series of information libraries: Symbols, Electronic Parts/Chips, Architectural Components, Landscaping, etc.
- Data base to store and retrieve information on parts specifications, vendors, and pricing.
- Data base system utilizes ASCII format files which are convertible to other standards.
- Capable of utilizing up to 4,096 colors.
- D·C can generate over 8,000 layers.
- D·C supports most standard dot matrix printers, ink jet, lazer jet, pen plotters, and the Gerber* Photoplotter.



MECHANICAL DRAFTING

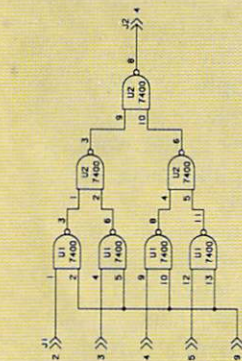
ISOMETRICS



*Gerber — trade mark of Gerber Scientific Instruments
*Leroy — trade mark of Keuffel & Esser
*IBM — trade mark of International Business Machines
*AutoCAD — trade mark of Autodesk, Inc.
*Amiga — trade mark of Commodore Business Machines



P.O. BOX 3475, GRANADA HILLS, CA 91344



SCHEMATICS

SIGNAL NAME	COMP NAME	PIN NLR/P	SOURCE	TYPE COMP
S0001	J1	2	•	CON
S0001	U1	1	•	7400
S0002	J1	3	•	CON
S0002	U1	4	•	7400
S0003	J1	4	•	CON
S0003	U1	9	•	7400
S0004	J1	5	•	CON
S0004	U1	12	•	7400
S0005	J1	9	•	CON
S0005	U1	2	•	7400
S0005	U1	10	•	7400
S0005	U1	13	•	7400
S0006	U1	3	•	7400
S0006	U2	1	•	7400
S0007	U1	6	•	7400
S0007	U2	2	•	7400
S0008	U1	8	•	7400
S0008	U2	4	•	7400
S0009	U1	11	•	7400
S0009	U2	5	•	7400
S0010	U2	3	•	7400
S0010	U2	9	•	7400
S0011	U2	6	•	7400
S0011	U2	10	•	7400
S0012	U2	8	•	7400
S0012	J2	4	•	CON

NET LIST FROM SCHEMATIC

SYSTEM REQUIREMENTS
512 K RAM
2 Disk Drives (or)
1 Drive and Hard Disk
Printer or Plotter

Inquiries invited. (818) 360-3715

many goods will overload your men, but you don't want to run short when it comes time to trade with the natives.

Now it's time to set sail for parts unknown. As your ships leave port, make note of where you are and in which direction you're heading. Choosing the View Map option gives you your present position. The Amiga makes maps for you as you go, and it's wise to check them frequently. It's also useful to make notes as you lead expeditions on land.

Be careful how you moor your ships when you reach land. It's easy to destroy them by running aground. As your expedition moves over the land, look for villages. A code on the back of the manual tells you what to expect from inhabitants. For example, a pink symbol represents a city-state confederation and an agricultural economy. These clues are only visible to novices.

If your goal is trade rather than conquest, you must deal directly with the chief, but you have to find him first. If you are lucky enough to find him, make sure you have enough goods or gold to trade. I don't know how many times I wandered around a village looking for the chief, only to find I didn't have enough goods once I finally located him.

If you run across a gold mine, get as much gold as you can. Load your men up with as much as they can carry and stash the rest for retrieval on a later expedition. Make sure you carefully note where (latitude, etc.) you put it. Remember, your goal is to find your way back to useful places and avoid dangerous ones. This might be a good time to return to Europe. If you feel adventurous, however, continue your search on land. If you meet natives, this time you'll have plenty of loot to impress the chief.

Formulating goals, such as trade or conquest, before you

leave your home port makes the game more fun. Decide before you leave whether you are the conquering-hero type, the merchant/trader type or the missionary type. You have the option of establishing forts or missions after conquering or trading with the natives.

I decided I was a merchant/trader type. Unfortunately, my men and I ran out of food during our first expedition in the new world. The last words I heard before I expired from starvation were, "Sir, you are the last to survive."

The next time I thought I'd be smart and take as much food as I could. Unfortunately, this meant I could take very few goods. When I finally located the chief of the first village (an Aztec city) I encountered, all he said was, "No trade." I did manage to find some gold, however, so I felt the quest wasn't a total loss.

I returned to Europe to find cheering crowds eager to hear my tales of the new world. I stopped at my home to study the maps I'd created and at the pub to record my maps and discoveries. Wise conquistadors are advised to stop at the pub after every trip or else lose all the maps and discoveries made up to that point.

I also stopped at court for recognition of my accomplishments. Unfortunately, the consensus at court was that my performance was poor. If I had done well, I might have been given a title.

All in all, I found *Seven Cities Of Gold* to be an entertaining game, and the Amiga's graphics really enhance the game experience.

Like many adventure games, it takes a bit of playing to become skilled enough to take advantage of all the features and avoid boredom. Even novice explorers, however, will find plenty to keep them occupied, as long as they carry out their quests with an explorer's spirit. Just set sail and let your

imagination take the tiller.

—Lori Tracy

\$39.95 retail

Electronic Arts; 1820 Gateway Dr.; San Mateo, Calif. 94404; 415-571-7171

*We used a Mouse Stick joystick and mouse interface, made by Video 7. If you choose this type of joystick, make sure you plug it into the Amiga's mouse port.

VIP Professional Integrated spreadsheet, database, graphics

512K Amiga.

If I were to describe *VIP Professional* in a single sentence, I'd have to say that it is like *Lotus 1-2-3* with color. The emulation is so complete that any of the numerous books on the applications of *1-2-3* will apply to *VIP*—including the keystrokes—giving Amiga owners access to the workings of the most popular piece of productivity software.

VIP, like *1-2-3*, is a combination spreadsheet, database and graphing utility. Put your labels and numbers on the spreadsheet, manipulate the numbers according to dozens of math and business formulas, sort them on any field, then turn the numbers into one of several business graphs.

If that sounds like a lot for one program to do, it is. This is why it requires 512K and why you are left with a work sheet of about 60K. Now 60K is enough for a large work sheet, but whether you actually are able to use that much depends on how you load the program. If you use more than one external drive, disconnect it. Then, after using the Workbench to set Preferences, be sure to close the window before opening *VIP*.

Although *VIP* features an

Talking Word Processor

Talker does everything you'd expect from a full-featured word processor, plus Talker does just that—talks. It reads your text, word-for-word or letter-by-letter.

So, Talker is great for proofreading, learning to type and the sight impaired.

Talker's pull down menus and

simple commands make it easy to use, and at \$69.96 it's easy on your budget.

Bring your words to life with Talker.

\$69.96

Call collect to learn more about Talker. Or, order risk free, your satisfaction is guaranteed.

(714) 854-4434



FNALY
SOFTWARE

4000 MacArthur Blvd. Suite 3000
Newport Beach, California 92663

PC Industry Insiders:

RENT A NEW PAIR OF EYES!

I'm not being facetious. Subscribing to P.C. Letter is like renting a new pair of eyes for a year. And your new eyes can give you a completely different perspective on what's happening in the personal computer industry.

You've already got a lot of things to worry about: new product development, managing your people, making sure your company has enough money. At the same time, new things are happening at a blinding pace: new strategies, new technology, new management techniques. That's the way things are in the pc business: constant change.

It's pretty hard to keep up with the change and do your job at the same time. But my only job is to understand what's important and why. So I travel around the country talking to hardware and software vendors, dealers, users, venture capitalists, publishers, consultants, anybody who has something important to say about the pc business. And twice a month I give you the latest take on what's important. That's what I mean by asking you to rent a

new pair eyes: subscribing to my newsletter is a way to see trends you might not pick up in the normal course of business.

My name is Stewart Alsop. I've been involved with the pc business full time now for five years and before that was trained as a business editor. Five years ago, I was executive editor at Inc. magazine. Since then I've been chairman of the Boston Computer Society, editor of Micro Marketworld, co-founder of Soft•letter, and editor of

Infoworld. Now I'm West Coast Editor of PC Magazine, as well as editor and publisher of P.C. Letter.

P.C. Letter is not cheap. It costs \$345 for 22 issues per year. But I invite you to take me up on my no-risk offer. If you subscribe now, you get 60 days to pay me. You get four issues of P.C. Letter before I need to see your money. If you don't think the newsletter lives up to its promise, just don't pay me, and I'll just stop sending you the newsletter.

YES! Please sign me up for a one-year subscription to P.C. Letter. I understand that a subscription costs \$345 (\$425 to addresses outside North America) and that I get 60 days to pay. I also understand that I will get a refund for unmailed issues if I decide to cancel my subscription.

Send me an invoice I've enclosed payment Send me a sample copy first

Name _____

Company _____

Address _____

City/State/Zip _____

Telephone _____ MCI Mail# _____

Make checks payable to P.C. Letter, 113 Somerset St, Redwood City, CA 94062

Reviews

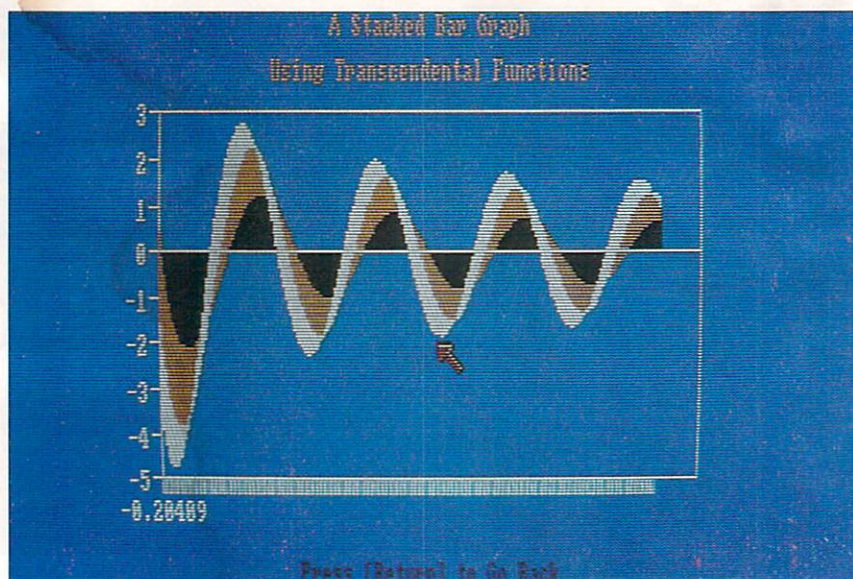
intuitive interface, memory requirements preclude multitasking. The program's documentation recommends expanding RAM to at least 1 megabyte (MB), and both the Tecmar and Cardco memory-expansion units have been tested and work well. With the Cardco interface, *VIP* supports up to 8MB.

After booting, you're presented with a work sheet having columns designed by letters and rows by numbers. Combined, these coordinates indicate the absolute address of any cell on the sheet; A1 is the cell in the top left corner, and one step to the right is B1. Move the cursor down and you are at B2. In all, *VIP* allows you to create work sheets of up to 8,192 rows and 256 columns, giving you a possibility of more than 2 million cells, with sufficient memory, of course.

Just above the work sheet, an information block keeps you current as to where your cursor resides, and any information you type into a cell is displayed in that block until you enter it by pressing Return or the cursor key.

That block also displays menu choices and a brief explanation of each item in the menu. Press "/" at any point and the main menu appears. The cursor is found resting on the Work-sheet entry, and just below it you are told that this selection invokes work-sheet commands. Select it by pressing Return. The menu changes to show the commands you can use and the results of each command. Because the menus and submenus cover virtually every operation of *VIP*, you'll find much of your work is done with just the cursor and Return keys.

Using what are by now almost conventional spreadsheet routines, *VIP* supports the use of "@" commands as a kind of shorthand for entering commonly used formulas, as well as more complicated formulas traditionally used in



VIP Professional from VIP Technologies

business. For example, "@sum(B1..B12)" would add the numbers in the range specified and present you with a total in the cell you used to enter the formula. A formula can be absolute, pertaining to only one range, or relative, performing the same operation on many ranges.

In addition, *VIP* supports the creation of macros and gives you quite a bit of documentation on the subject. Because macros have almost attained the status of programming languages and because there are many good books on the subject, we'll simply note that macros are similar to batch files or programmed function keys. Using macros, it is possible to set up a formula you may need to repeat or to set up a series of sort commands.

Saved as a macro and with a key or keys assigned to it, a command can be invoked at any time with just one or two keystrokes. This becomes a great timesaver and a hedge against a faulty memory. Once you have the command in memory, you don't have to remember syntax, only a single key.

OK, you've sped through the creation of a work sheet and now you want to turn the numerical information into a graph. Once again, menus and submenus lead you through all the choices: type of graph, range of the work sheet for labeling and range or ranges of numbers to be included in the graph. *VIP* can give you all kinds of graphs: line, bar, stacked-bar, pie, etc.—whatever best expresses the information you wish to convey.

If you want to make a presentation-quality graph, you may save your information to a graph file, load the *Graphprint* module and call up the graph file.

It is only in *Graphprint* that you actually use your Amiga controls. (Remember, 1-2-3 was not made for a mouse.) By using the mouse and pull-down menus, you can create graphs with stunning colors. In addition, you have at your disposal all the Amiga Notepad fonts for creating labels and legends.

Such charts may be printed in color as well, as may the less-spectacular charts made by the *VIP* main program. With a standard printer, a black-and-white option of *Graphprint* translates colors

into shadings, so you may still have the full utility of the program.

As a database, *VIP* may be just a little different than what you've seen before. Record fields are laid out right to left instead of top to bottom. For example, a name would appear in column A, the address in B, state in C, zip code in D and so on.

When using *VIP* as a database, each cell becomes a field holding one item of information such as an address or zip code. Your records can be sorted on one or two fields, so it would be possible to keep records in alphabetical order and grouped by zip code.

Just because a program such as *VIP* is useful, it does not mean that it is difficult to use. *Lotus 1-2-3* attained its status on the best-seller list because it could do many things well and because

most literate people could use it almost immediately.

VIP Professional also emulates *1-2-3's* on-screen tutorials, menus, submenus and documentation. This assumes users know nothing about spreadsheets and provides excellent background information and a step-by-step example of a home budget program.

VIP is one of the more expensive programs for the Amiga, but it is well worth the price. Though several other good spreadsheets recently have appeared on the Amiga market, we've seen nothing else that puts the strength, simplicity and utility of *VIP* into one neat package.

—Ervin Bobo

\$249.95 retail
VIP Technologies; C/O ISD
Marketing, Inc.; 20 Steelcase
Rd. W, Unit 12; Markham, Ontario, Canada L3R 1B2;
416-479-1880

THE FAMILY
SUGGESTS THAT
MEMORIAL
CONTRIBUTIONS
BE MADE
TO THE
AMERICAN
CANCER
SOCIETY.

— words that mean people want to honor a loved one and want to help conquer cancer. Send a Memorial Gift to your local ACS Unit.



AMIGA OUTLET	
3½" Disks (DS,DD)	10/27.95
3½" Disks (DS,DD) Plain Label Brand	10/21.95
3½" Disk filp top file - Holds 40 disks	\$12.95
CLASSIC IMAGE, INC. - PRESENTS	
DIABLO - Graphic mind challenge game	\$29.95
DISK LIBRARY - Now you can File, Catalog, Update Search, Cross Reference, Report	\$49.95
DEALER INQUIRIES INVITED	
Amiga® System Covers - W/mouse/LOGO	\$21.95
Amiga® Disk Cover - 1010 or 1020 with LOGO	\$7.99
Paper T/F-F/F White, 9½ x 11, 201b.	1000/\$22.95
Paper T/F-F/F ½" Greenbar, 9½ x 11, 181b	1000/\$17.99
Index Cards - T/F-F/F, 3 x 5	500/\$7.95
Rolodex Cards - T/F-F/F, 2 1/6 x 4	500/\$8.95
Labels - T/F-F/F, Address	1000/\$6.95
S&H-\$2.50 US	M.W. RUTH CO., AMRA6
S&H-\$4.50 CN Visa	510 Rhode Island Ave.
US \$'s only Master	Cherry Hill, NJ 08002
	(609) 667-2526

We stock what we sell, for fast delivery.

Send for **FREE CATALOG** * All available AMIGA items
AUG 6800 members - Just give us your membership number and deduct 10% off of all purchases.

ATTENTION PROGRAMMERS - Let us take over the headaches of publishing your software. We are looking for all items related to the "AMIGA®".

AMIGA® is a registered trademark of Commodore-Amiga, Inc.

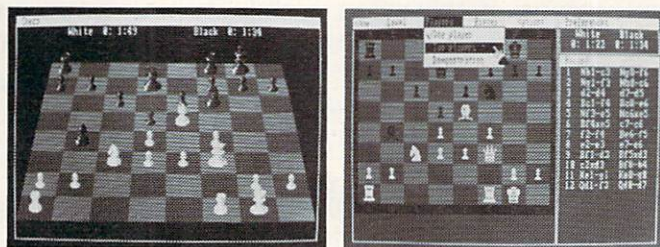
AUG

AMIGA USERS' GROUP 68000

Join the largest users' group dedicated to the Amiga. You will receive our official newsletter. Evaluations on software and hardware, Advanced updates, technical information, Problem-solving, program exchange (over 50 disks in our PD library), Buying discount service, etc. Send \$18.00 US for Membership to:

AMIGA USERS' GROUP 68000
Box 3761 - Attn: Jay Forman
Cherry Hill, NJ 08034

(609) 667-2526 * Visa/Master - Add \$1.00



CHESSMATE™ FOR AMIGA

Introducing the ultimate in computer chess. Chessmate features spectacular graphics and sophisticated intelligence routines written in machine language for maximum speed. Other features include • 2D or 3D display • you vs Amiga, you vs friend, Amiga vs Amiga • multiple skill levels • game clocks • book moves • displays move list • suggests moves for you • checks for illegal moves • take back any number of moves • invert board • switch sides • replay game • save game on disk • set up position • solves mate-in-two problems • speaks in male, female or robot voice • master games and problems included on disk • complete documentation

\$29.95 plus \$2.50 shipping. NC residents add \$1.50 tax. Requires 512K and Amiga Basic.

DARK HORSE
Dept B10
P.O. Box 36162
Greensboro, NC 27416
(919) 852-3698

Dealer inquiries welcome.

Programmers: We can market your Amiga programs. Call or write for details.

Amiga is a trademark of Commodore-Amiga, Inc.

AMIGA HARDWARE ROUNDUP

One highly acclaimed aspect of the Amiga is its open architecture, which allows the addition of extra hardware devices through one or more of the computer's expansion ports. Many companies, in addition to Commodore Business Machines, Inc., are taking advantage of this open architecture and creating new lines of Amiga hardware products. These new devices greatly enhance the machine's capabilities, allowing users to work faster and more efficiently.

There are more than 1,000 registered developers of Amiga products, many of whom produce only hardware. Some of these developers are now shipping products, or soon will be, that most serious Amiga users should be aware of. The following is a brief report on many of the new Amiga hardware products coming to market.

RAM Expansion Beyond 512K

Before you expand your Amiga's random-access memory (RAM) beyond the 512K internal limit, you need to be aware of several facts. First, the 68000 micropro-

cessor in the Amiga is able to address a total of 16 megabytes (MB) of RAM directly. Due to certain design restraints, however, the computer can only use 8.5MB. (The IBM PC can only directly address 640K, less than 1MB.) The Amiga can hold 512K inside its chassis. To add more RAM than that will require some kind of expansion interface. Some RAM upgrades supply that interface, others do not.

If you are using *Version 1.1* of the Amiga operating-system software, you will have to execute one or more programs at start-up for the computer to recognize the extra RAM (or any other hardware





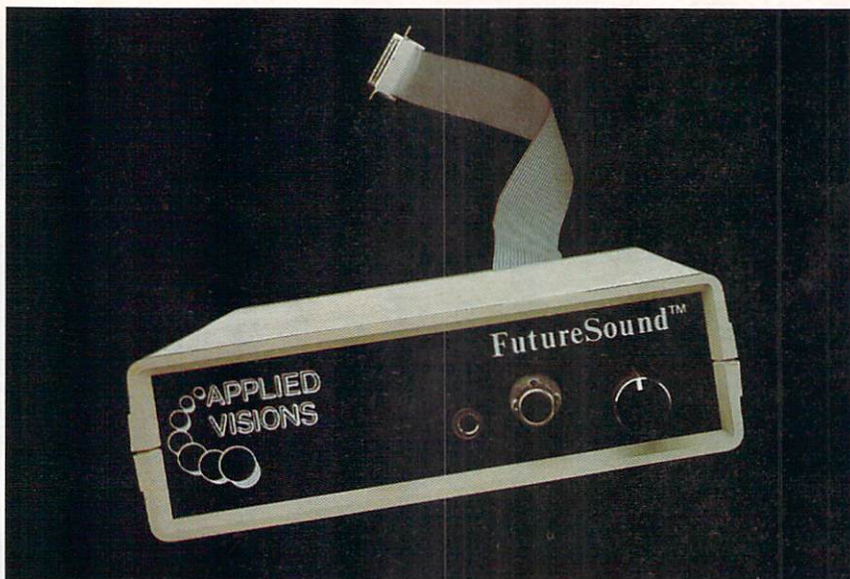
device for that matter). This is accomplished by entering appropriate commands in your Workbench Start-up Sequence in the "S" directory on your boot disk. These commands (usually **Add-Mem**) direct the operating system to expect RAM at a given address. In most cases, the RAM expansion maker will supply you with a program that installs the necessary software on your Workbench disk.

If you are using *Version 1.2* of Kickstart/Workbench, you have the added convenience of automatic configuration devices, which inform the computer they are there and tell what resources they need. The Amiga performs necessary housekeeping arrangements for these devices, enabling them to work in harmony. The result for the user is simplicity. Setup requires no effort at all.

The following five companies currently market RAM expansion cards for the Amiga:

Tecmar in Solon, Ohio, produces the T-Card, which installs on the main expansion bus on the right side of the Amiga. The T-Card can add a maximum of 1MB of extra RAM. It can be purchased fully populated with the 1MB or as a 256K or 512K card that can have extra RAM added. The T-Card contains a clock with a battery, so users never need to set the time and date after doing so initially. It also has a SASI (Schugart Associates System Interface) hard drive interface built in. Only Tecmar's hard drive will work with the card at this time, however.

The T-Card cannot automatically configure, so it is necessary to change the start-up sequence to activate it. Tecmar supplies a utility program that does this. We used the T-Card for several months (with *Version 1.1* software) and found that most, but not all, programs will work with the extra RAM. None of the hard disk drives or alternate processors we have (except the Tecmar hard disk drive) worked properly with the card installed, and we were not able to check it with *Version 1.2*.



FutureSound from Applied Visions

The T-Card does not have a pass-through, so you cannot add anything else to the main bus except the T-Disk hard disk drive. The T-Card's retail price is \$995.

Toronto-based Comspec offers the AX2000 2MB expansion card. It may be the best piece of hardware on the Amiga market today. The RAM comes in a small Amiga-colored metal box that easily plugs into the main bus. It installs in seconds, faster than the extra 256K you may have added when you bought your Amiga. Using software *Version 1.1*, the card requires the use of **Add-Mem** in the start-up sequence. When using *Version 1.2*, it automatically configures. In any event, the card's hassle-free extra memory is nice to have.

The Comspec card was the most compatible RAM-expansion system we tried, in terms of hardware and software combinations. We liked the fact that it offered an available pass-through edge connector from the Amiga's main bus. Comspec says, which we were not able to confirm, that you can piggyback two of its cards and have more than 4MB of main memory. The Comspec 2MB card is \$899 retail.

Cardco offers the aMEGA 1MB card, another easy-to-install RAM upgrade. It consists of a small box, which is longer than Com-

spec's card but smaller than Tecmar's, that plugs into an Amiga's expansion port. It works under *Versions 1.1* and *1.2* (automatically configures with *1.2*) and offers a pass-through to the main bus. It was not as compatible with software and other hardware as the Comspec board, but more so than the Tecmar. The Cardco board sells for \$550 retail.

One of the largest RAM-expansion cards we found was the RS Data, based in Houston, 4MB RAM card. This card even offers an option to add another 4MB, so you can—with one card—increase your Amiga to a whopping 8.5MB.

Unlike the previous three, this card is not enclosed in a case. It is an exposed circuit board with RAM chips and an 86-pin edge connector and it looks like an IBM-style RAM card. It was originally designed to be mounted inside Amiga RAM-expansion boxes made by The Micro Forge, but RS Data says it now plans to market its own boxes with its RAM cards.

The RS Data card works with *Version 1.1* software. It does not automatically configure with *Version 1.2*, but works if installed using the **AddMem** command. While we did not test this card thoroughly, we did try it with some *AmigaBASIC* programs and successfully allocated over 1.5MB

The disk man

SONY.

COMMODORE 64

COMMODORE 128



5 1/4" Single Sided
\$.89 ea.

AMIGA



3 1/2" Double Sided
\$ 1.99 ea.



5 1/4" Double Sided
\$.99 ea.

Boxes of 10
 (2 Box Minimum)

QUANTITY DISCOUNTS ON DISKS

(Bulk)

as low as **3 1/2-\$1.49** ea.
 Double-Sided

5 1/4-\$.49 ea.
 Double-Sided

3 1/2-\$1.09 ea.
 Single-Sided

RIBBONS

DISCOUNT SOFTWARE

"Call us and give us a chance
 to beat the competition!"

213/650-5575



MAS-Drive 20 from MicroBotics, Inc.

of memory for basic use, leaving more than 2MB for other Amiga tasks. That much memory allowed us to manipulate 1000- by 1000-element arrays (1 million elements) quite easily.

At this time, the RS Data card is the largest single RAM upgrade available. It is also, therefore, the least expensive in terms of dollars per megabyte. The RS Data 4MB cards retails for \$1,246 and can be purchased in a 2MB version for \$850. All versions require an expansion device with an 86-pin format.

The last RAM-expansion board we were able to examine is the Alegra Memory Expansion Unit from Access Associates, Santa Clara, Calif. The Alegra card comes with 512K RAM, which expands an Amiga to 1MB of RAM. The card can be expanded by replacing its 256K RAM chips with a user-installed 1MB RAM chip. The current cost of this 1MB upgrade is quite high, but it may soon become more reasonable.

The Alegra card automatically configures under *Version 1.2* software and works with *Version 1.1* by using **AddMem**. We did not have sufficient time to test it with a lot of software and other hardware for compatibility. It was easy to install, however, and we completed the task in about five minutes. The card does not have a

pass-through to the main bus, but its vendor believes users simply want more RAM and are not worried about adding larger expansion hardware. They may be right. The Alegra card sells for \$379 retail.

In addition to these five companies, several others have announced products that extend an Amiga's RAM over the 512K internal maximum. These include Skyles Electric Works, Microbotics, Inc., Interactive Video Systems and The Micro Forge. Products from these firms may be available by the time you read this.

Hard Disk Systems

A computer as powerful as the Amiga often requires a mass-storage device, such as a hard disk drive. We were able to look firsthand at three such drives, each with 20MB capacity.

Tecmar produces the T-Disk, a 20MB hard disk drive that connects to an Amiga via Tecmar's T-Connect (a simple SASI interface, no RAM) or T-Card SASI interface. We used the T-Disk for several months with a 1MB T-Card interface; an earlier preproduction drive failed after a few weeks. The T-Disk and T-Card worked fine together, but did not work with non-Tecmar RAM

cards, hard disk drives, expansion boxes or alternate processors.

We were only able to test the T-Disk with *Version 1.1* software. The T-Disk itself is \$1,495 retail, but the required T-Connect or T-Card raises the price to at least \$2,000 for a 20MB system.

A 20MB hard disk system is available from The Micro Forge in Atlanta. This drive is designed to be used externally or inside an expansion box. We used the drive routinely for several months without any problems. It was compatible with the Netch 68881 math coprocessor board, the Comspec RAM card and *Version 1.2* software. We did not use the drive extensively with *Version 1.2*.

The biggest complaint we had was with the unit's power supply, which could be placed out of sight with a longer connection to the drive. When using the expansion box, the power supply is no problem. We basically liked the drive, found it reliable and fast and missed it when we had to return it. The Micro Forge CD20 sells for \$1,495 retail. If you don't have an expansion box, a single-slot adaptor is less than \$100.

A new entry is the Microbotics 20MB hard disk drive. Microbotics is in Richardson, Texas. This drive differs from the previous two in that it does not connect to an Amiga via the main expansion bus. It connects instead to the printer port, leaving the main bus free. We were only able to use it for a few days, but found it to be slightly slower than the Tecmar or Micro Forge hard disk drives. The Microbotics drive works only under *Version 1.2* software, although the company promises compatibility soon for both *Versions 1.1* and *1.2*.

The drive does offer a SCSI, (small-computer system interface) however, and can be piggybacked with up to four Microbotics drive systems, each with its own power supply. Interestingly, the Microbotics drive does not have a cooling fan, using its metal housing instead to dissipate heat. The Microbotics drive retails for \$1,495 and includes its own interface.

Software designed for AMIGA.

Lattice® C Compiler **\$149.95**

With more than 30,000 users worldwide, Lattice C Compilers set the industry standard for MS-DOS software development. Lattice C gives you all you need for development of programs on the AMIGA. Lattice C is a full implementation of Kernighan and Ritchie with the ANSI C extensions and many additional features.

AMIGA C Cross Compiler **\$250.00**

Allows AMIGA development on your MS-DOS system. Price includes the above product.

Lattice Screen Editor (LSE™) **\$100.00**

Designed as a programmer's editor, *Lattice Screen Editor (LSE)* is fast, flexible and easy to learn. *LSE's* multi-window environment provides all the editor functions you need including block moves, pattern searches and "cut and paste." In addition, *LSE* offers special features for programmers such as an error tracking mode and three Assembly Language input modes. You can also create macros or customize keystrokes, menus, and prompts to your style and preferences.

Lattice dBC III™ Library **\$150.00**

The *dBC III library* lets you create, access and update files that are compatible with Ashton-Tate's dBASE system. *dBC III's* C functions let you extend existing dBASE applications or allow your users to process their data using *dBC III* or dBASE III.

Lattice Make Utility (LMK™) **\$125.00**

An automated product generation utility compatible with UNIX Make, *Lattice Make Utility (LMK)* lets you rebuild complex programs with a single command. Once you specify the relationships of the various pieces of your system in a dependency file, *LMK* automatically rebuilds your system the same way every time, and only compiles program files that have changed. But *LMK* is not limited to updating programs. You can use *LMK* to update documentation or perform **any** executable command!

Lattice Text Utilities (TMU™) **\$75.00**

Lattice Text Utilities consists of eight software tools to help you manage your text files. GREP searches files for the specified pattern. DIFF compares two files and lists their differences. EXTRACT creates a list of file names to be extracted from the current directory. BUILD creates batch files from a previously generated file name list. WC displays the number of characters and optionally the checksum of a specified file. ED is a line editor which can utilize output from other *TMU* software in an automated batch mode. SPLAT searches files for a specified character string and replaces every occurrence with a specified string. And FILES lists, copies, erases or removes files or entire directory structures which meet the specified conditions.

Lattice Unicalc® Spreadsheet **\$79.95**

Unicalc is a simple-to-operate program that turns your AMIGA computer into an electronic spreadsheet. Using *Unicalc* you can easily create sales reports, expense accounts, balance sheets, or any other reports you had to do manually.

Unicalc offers the versatility you've come to expect from business software, plus the speed and processing power of the AMIGA.

- 8192 row by 256 column processing area
- Comprehensive context-sensitive help screens
- Cells can contain numeric, algebraic formulas and titles
- Foreign language customization for all prompts and messages
- Complete library of algebraic and conditional functions
- Dual window capabilities
- Floating point and scientific notation available
- Complete load, save and print capabilities
- Unique customization capability for your every application
- Full compatibility with other leading spreadsheets
- Full menu and mouse support.

Lattice MacLibrary™ **\$100.00**

The *Lattice MacLibrary™* is a collection of more than sixty C functions which allow you to quickly and efficiently take advantage of the powerful capabilities of the AMIGA.

Even if your knowledge of the AMIGA is limited, *MacLibrary* can ease your job of implementing screens, windows and gadgets by utilizing the functions, examples and sample programs included with the package.

Other *MacLibrary* routines are functionally compatible with the most widely used Apple® Macintosh™ Quickdraw Routines™, Standard File Package and Toolbox Utility Routines enabling you to rapidly convert your Macintosh programs to run on the AMIGA.

Panel™ **\$195.00**

Panel will help you write your screen programs and layer your screen designs with up to ten overlapping images. *Panel's* screen layouts can be assigned to individual windows and may be dynamically loaded from files or compiled into a program. *Panel* will output C source for including in your applications. A monitor and keyboard utility is also included to allow you to customize your applications for other systems.

With Lattice products you get *Lattice Service* including telephone support, notice of new products and enhancements and a 30-day money-back guarantee. Corporate license agreements available.



Lattice

Lattice, Incorporated
Post Office Box 3072
Glen Ellyn, Illinois 60138
(312) 858-7950 TWX 910-291-2190

INTERNATIONAL SALES OFFICES: Benelux: Ines Datacom (32) 2-720-51-61
Japan: Lifeboat, INC. (03)293-4711 England: Roundhill (0672)54675
France: SFL (1)46-66-11-55 Germany: (49)7841/5058
Hong Kong: Prima 85258442525 A.I. Soft Korea, Inc. (02) 7836372

Lattice

Service

The above-mentioned hard disk drives are all slow, compared to hard disk drives used on IBM PCs. The Micro Forge CD20, the fastest, is only about two to three times as fast as the Amiga's floppy drives. One reason for the lack of speed is that none of these drives use direct memory access (DMA) to transfer data. With all the DMA channels available, Amiga hardware developers should be using them. So far they are not. Take heart, Commodore has developed a DMA hard disk drive controller and is licensing it to some hardware developers.

Several companies are now promising DMA drives. One is Byte By Byte of Austin, Texas, which has designed the PAL expansion system and is promising a DMA hard drive for it.

Another is Supra of Albany, Oreg. Supra markets a high-speed 20MB hard disk drive for the Atari ST. The company intends to deliver a version for the Amiga by Christmas. This drive would also be a 20MB system and would sell for about \$799 retail.

The Micro Forge has announced The Business Partner, a 20MB drive with 2MB of RAM. Not much was known about this drive at press time, but it should be available by the time you read this.

Alternate Microprocessors

Some of the most interesting hardware products for the Amiga are substitute microprocessors and math coprocessors. These devices are mounted internally, replacing the Motorola 68000 chip.

One such product comes from Computer System Associates (CSA) in San Diego. It's the Turbo Amiga board—consisting of a full 32-bit 68020 microprocessor, a Motorola 68881 floating-point math coprocessor and 512K RAM—which runs at more than twice the normal speed of the Amiga. Once the Turbo Amiga board is installed in your start-up sequence via its new commands, the computer appears to func-

tion normally.

In truth, you will have the equivalent of a Digital Equipment Corporation VAX computer on your desk. According to the Byte Information Exchange, Turbo Amiga actually outperforms a VAX in certain types of computations. The 68881 allows you to calculate real numbers up to 10 times faster than before, and the 68020 performs many operations at twice the speed of the 68000, even when running at the same clock rate.

Combining the 68020, the 68881 and the higher clock rate gives true mainframe power to an Amiga user. But this extra power does extract a price in software compatibility. Many commercial programs will not run with the CSA Turbo Amiga board in place. Check your software to see if it is compatible.

In addition, your programs will not automatically benefit from the 68881 math chip. Software must be written to check for the availability of the chip. Very few Amiga programs currently do that, but this will change as the number of 68881s in use increases.

The major users of the Turbo Amiga are research laboratories, computer centers, military installations, universities and a small number of advanced individuals. These users require the computer muscle of the Turbo Amiga and have the programming expertise to write the custom software they need. The 68020/68881 board can be purchased directly from CSA for \$1,495 retail.

The second alternate processor board is from Netch Computer Products in Monrovia, Calif. Called the 68881 Floating Coprocessor Board, it incorporates a Motorola 68010 with a 68881 chip and is a fairly inexpensive math coprocessor at \$495 retail. The 68010 is not a true 32-bit processor—as is the 68020—but it is essentially software compatible.

You could use this device as an inexpensive 68020/68881 development environment or just utilize the math chip, which provides Amiga owners with a powerful hardware upgrade without

sacrificing a lot of money and software compatibility. The device was compatible with almost all the software and hardware we tried. With the exception of a few Electronic Arts games and the Cardco 1MB RAM card, it worked quite well.

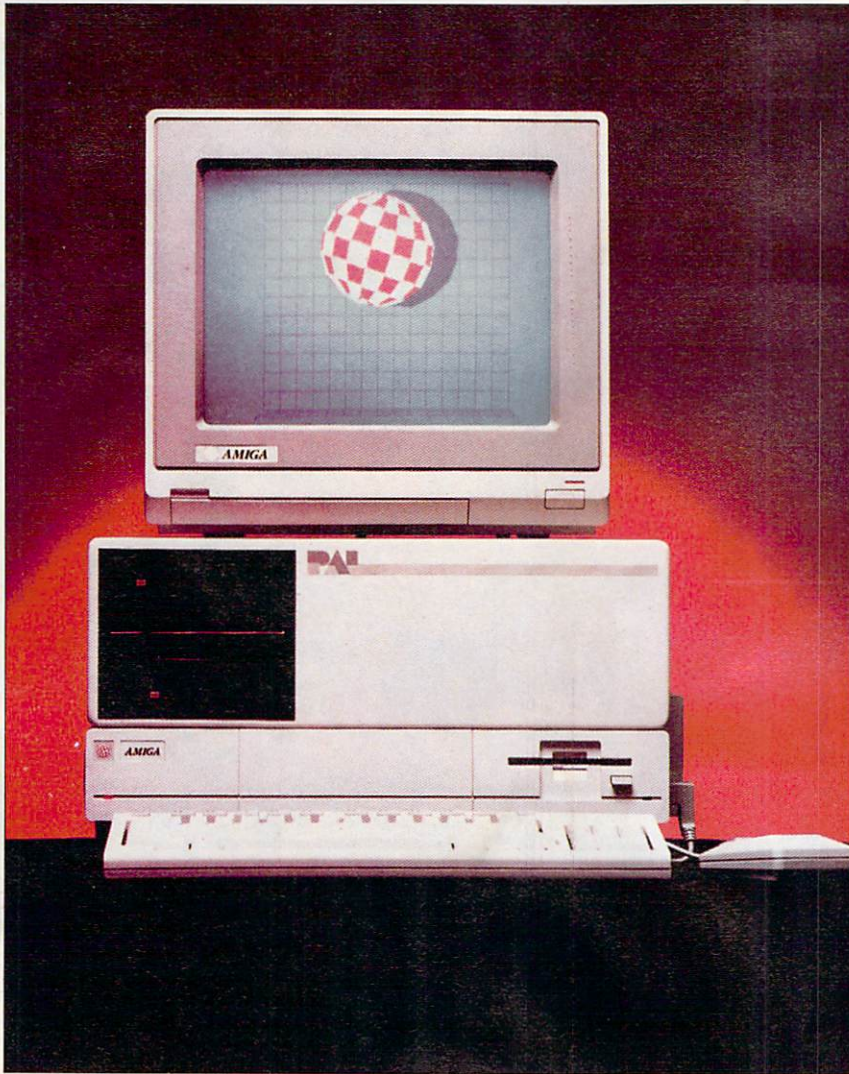
In terms of future coprocessor accessories, Microbotics is planning to offer a multifunction board with a 68881 socket. *Version 1.2* of the Amiga system software offers some 68881 support, and more hardware companies will be offering math chips. The combination of the Amiga operating system and third-party hardware support will ensure the availability of commercial software that takes advantage of the extra power offered by the Motorola 68881.

Expansion Boxes

Expansion boxes give an Amiga the same abilities as an IBM PC, which has a number of built-in (and empty) slots where users who want to upgrade their machines can install new hardware. With a few exceptions, the Amiga requires its upgrades to be external. Originally, the Amiga was to use an 86-pin format, and some earlier equipment uses that design. The newest expansion schemes use what is called the Zorro expansion architecture, a 100-pin connector design.

The only expansion box we could find that was shipping at the time of this writing is the one from The Micro Forge. Called the Seven Slot Expansion Box, it retails for \$656.95 and is designed to be used with Micro Forge's CD20 hard disk drive and stereo digitizer card. We used one of these expansion boxes for a while and found it unsatisfactory. Perhaps it was only this one, but we had problems with both the hard disk drive and the stereo card, both of which worked fine using Micro Forge's Single Slot Adaptor Card. All the slots were the 86-pin format.

There are several other expan-



PAL Expansion System from Byte by Byte

sion boxes that should be available by press time. One is from RS Data, maker of the 4MB RAM card. This box will contain two slots and be used for RS Data's RAM cards and, possibly, a hard disk drive controller.

Another expansion system that looks very solid is PAL from Byte By Byte. It's a high-end system with DMA hard disk drive controllers, RAM expansion with a clock/calendar and five slots. It may be the premiere expansion box for some time.

Buss Station from DSI in Wichita, Kan., is said to be a modular expansion system with eight 86-pin connectors. In addition, CSA in San Diego says it will offer an expansion system for its Turbo Amiga board.

Sound Digitizers

The Amiga's sound capabilities truly set it apart from run-of-the-mill micros and super-micros. It is the first commercial computer to offer speech synthesis as a standard feature, and it has stereo four-voice sound output and a dedicated music chip. This chip is capable of reproducing sound in near CD ROM (compact disc) quality.

Sound digitizers for the Amiga collect and analyze sound via a microphone or line input and convert it to digital data. By using software, a user can recreate the original sound. How well the sound reproduces depends on the original sampling rate, the quality

of the device and the software.

Our favorite sound digitizer is Futuresound from Applied Visions, Medford, Maine. This is a complete system that interfaces to an Amiga via the printer port, with a pass-through connection for a printer. It comes complete with a microphone, interface, good software and decent documentation.

It also comes with working C (executable files and source code on disk) and *AmigaBASIC* routines that enable users to use digital samples in their programs. They can perform multitrack recordings, manipulate sounds by filtering and other more exotic functions. Futuresound accepts line and microphone input. At \$175 retail, it is a good buy and may be the choice digitizer for programmers who need sound effects in their programs.

Another fine digitizer is the Soundscape Sound Digitizer from Mimetics Corporation in Palo Alto, Calif. It's the cheapest system (\$99 retail) and, perhaps, the most professional. Its manual is comprehensive, and the software, while not as user friendly as Futuresound, is very powerful. It even contains examples of programming techniques, but they are not available on disk, only in the manual.

The Soundscape Sound Digitizer is easy to install, connecting to the computer's second mouse port. It accepts both microphone and line input, but users must supply their own microphones. The device is a good value and a quality instrument. Mimetics also makes a MIDI interface for the Amiga that plugs into its serial port. It offers MIDI in, out and through connections and allows an Amiga to communicate with MIDI-capable musical instruments and devices. The interface is available for \$49 retail.

Mimetics also sells a very powerful software system that complements its hardware. It is called the *Pro MIDI Studio* and retails for \$149. While software is outside the scope of this article, it is important to note that Mimetics offers this extra software support

for its sound hardware.

A third sound digitizer is the Stereo Sound Digitizer from The Micro Forge. It is a true stereo digitizer, which means it captures sound from two channels concurrently. The other systems mentioned here do not have that capability. The device interfaces with an Amiga via The Micro Forge's Single Slot Adaptor expansion box.

The Stereo Sound Digitizer consists of a printed circuit board with two line inputs. There is no provision for a direct microphone input, but its included software allows users to digitize sounds in mono or stereo. The device is available from The Micro Forge for \$345 retail.

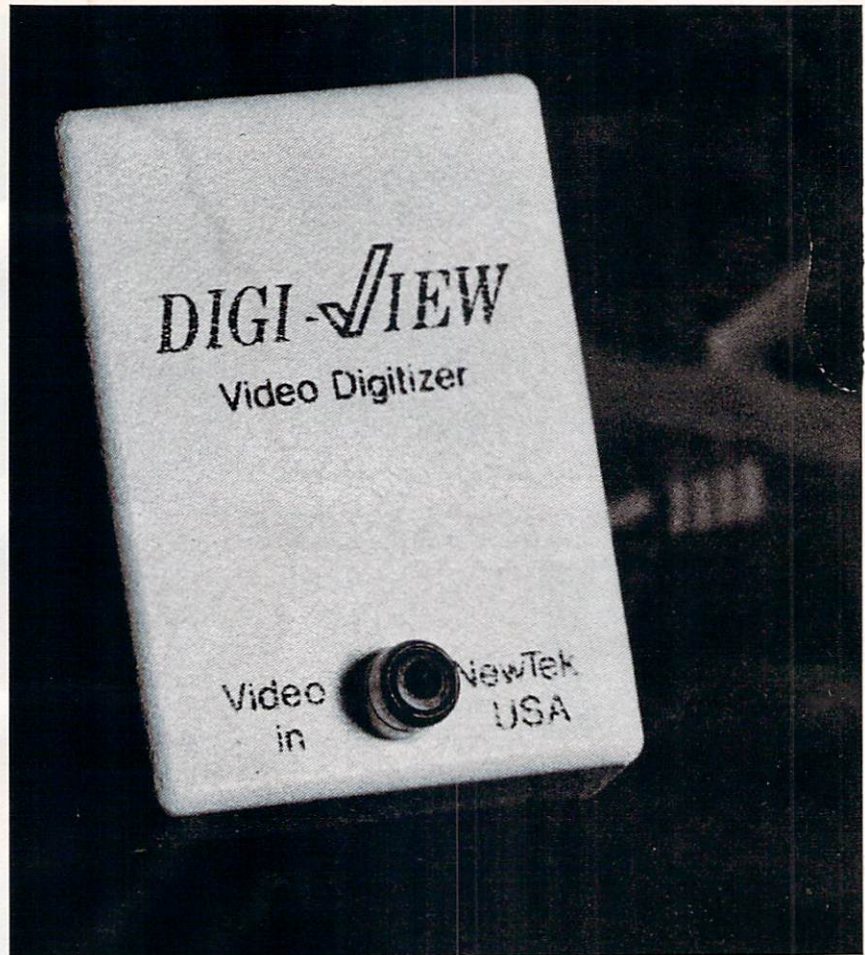
Graphic Devices

Sound is not the only area where the Amiga excels. Graphics is also one of the machine's most outstanding features. Early on, Amiga users were promised a host of high-tech graphic devices. Recently, we were able to look at one such system shipping to the public at this time.

Digiview from NewTek in Topeka, Kan., is one of the neatest things for the Amiga to come down the road in a while. It is a small device that plugs into the computer's printer port and acts as a graphic digitizer. It is not a frame grabber, however, which can snap several frames a second. Digiview requires 10 to 30 seconds to capture its images, so it is useful only for still shots.

What is unique is that it is able to create full-color pictures from a black-and-white camera. Using powerful software techniques, it combines three filtered photographs into one. Then using the Amiga's hold-and-modify mode, it displays the picture using all of the Amiga's 4,096 possible colors.

Digiview also has an interlaced version that uses sophisticated gray shading techniques, which eliminate most of the flicker associated with the interlaced mode. The device comes with software



Digiview from NewTek

and instructions, but no camera. A relatively inexpensive black-and-white camera, such as the \$200 (approximately) Panasonic WV-1410, may be used. Digiview itself retails for \$200.

Speaking of frame-grabber devices, we were not able to get the Amiga Live! color frame grabber for this review. We have seen it twice at trade shows, however, we are at a loss as to why it has not yet been marketed. Nor were we able to get a Genlock device.

Graphic Controllers

There are a couple alternatives to using the mouse as a graphic controller. One is the Easy! from Anakin Research, Rexdale, Ontario, Canada. It is a standard graphics digitizing pad that can be used for creating original drawings and designs or as a

means of digitizing printed drawings. It retails for \$499.

A second system is the Series One graphics tablet from Kurta Corporation in Phoenix. It is an 8½- by 11-inch graphics tablet. No price was available at press time.

This strong array of new hardware products for the Amiga boosts its memory capacity, speed, power and utility to an admirable and affordable level. An eye-opening number of developers see a potential in the Amiga based solely on the computer's merits, not its manufacturer's name. From all indications, the Amiga is growing into a powerful, versatile, high-quality-oriented machine. ■

—Louis R. Wallace

The author is a computer specialist and research chemist for the Veteran's Administration and a contributing editor for many computer publications.



AEGIS brings Desktop Video to the AMIGA®!

Introducing a line of graphic programs that make computer design and animation truly affordable.

Impact™

Impact creates business presentation graphics with finesse. Pie charts, bar graphs, icons, plots, and trends combined with a structured drawing system give you the visual edge to get your point across. Use *Impact* to produce rolling slide shows for trade show presentations, or to enhance verbal reports. The graphs and slides can be printed for use in written reports.

Aegis Animator™

A full feature metamorphic animation system. Use *Animator* to put your ideas in motion. Aegis Animator combines Cels, Morphed Objects, 3-D manipulations, and color cycling to create the best looking Desktop Videos anywhere! Create storyboards, enhance graphical presentations, or experiment with visual effects before committing them to traditional animation methods. Use paintings with *Aegis Images*, *Graphicraft™*, or other paint systems to produce continuous demonstrations. When used with Genlock you can produce

special effects for video or animated titles and scrolling credits.

Aegis Images™

The professional paint system for Amiga. Use *Images* as a graphics processor to produce renderings of buildings, design sets and costumes for theatre, create layouts and concepts in advertising, or artwork for custom Amiga programs. Use it anywhere art and design is created by hand.

When combined with Genlock, *Images* can create mats and other video effects. If you pass paintings to *Aegis Animator™*, you can create a rolling slide show for demos or backgrounds and windows for animations.

Aegis Draw Plus™

Aegis Draw Plus is the New advanced big brother to *Aegis Draw*. It turns your Amiga into a low cost, powerful CAD Workstation. *Aegis Draw Plus* includes multiple drawing resolutions (640×200 & 640×400), Extensive Plotter Support, High Quality Printing, Multi-Tasking, Multi-Window & Multi-Drawing support, Display of Numerical units or Feet/Inches/Fractions (entry & display), Rotation and

resizing of text, Dynamic Automatic Dimensioning (Associative), Parts Libraries, Mirroring, Arrays (linear, circular, & combinations), On-Screen Numerical Display (coordinates, lengths, angles, 'tool-in-use', status), Zoom, Metamorphic 'Hook', Multiple Layers with Multiple Colors Per Layer and much more. Combined with the standard features found in *Aegis Draw*, *Aegis Draw Plus* offers the most power for the smallest price. Use *Aegis Draw Plus* to create architectural plots, floor plans, "what-if" space plans, organizational charts, and anything else your creativity can think of! (NOTE: This is *not* *Aegis Pro-Draw™*. *Aegis Pro-Draw* is a high level 3-D system available in 1987.)

**Aegis Development –
The number 1 choice in
graphic software.**


AEGIS
DEVELOPMENT

Santa Monica, California

Accounting

B.E.S.T. Business Management System

Integrated business management

An integrated accounting system that includes order processing, inventory management, services management, accounts receivable, accounts payable and general ledger.

\$395 retail

Business Electronics Software & Technology, Inc.; PO Box 852; McMinnville, Oreg. 97128; 503-472-9512 or 800-368-2378

CCI Bottom Liner A

Personal, small-business accounting

An expandable accounting system designed for personal, home and small-business use.

Clockwork Computers, Inc.; 4612 Holly Ridge Rd.; Rockville, Md. 20853; 301-924-5509

CCI Merchandiser A

Transaction accounting, inventory control, customer lists

Handles transactions, inventory records, financial reports and analyses, accounts receivable and more.

Clockwork Computers, Inc.; 4612 Holly Ridge Rd.; Rockville, Md. 20853; 301-924-5509

CCI Merchandiser A-Plus

Integrated accounting

Produces a fully integrated quotation, job order, sales transaction, inventory control, inventory costs and a complete accounting program.

Clockwork Computers, Inc.; 4612 Holly Ridge Rd.; Rockville, Md. 20853; 301-924-5509

Financial Plus

Integrated business accounting

An integrated accounting package that incorporates general ledger, accounts payable, accounts receivable, payroll and word processing.

\$295 retail

Byte By Byte; Arboretum Plaza II; 9442 Capital of Texas Hwy. N., Ste. 150; Austin, Texas 78759; 512-343-4357

MiAmiga Ledger

General ledger accounting system

A double entry general ledger accounting system designed to be used in both the home and in small businesses.

\$99.95 retail

SoftWood Company; PO Box 2280; Santa Barbara, Calif. 93120; 805-966-5884

Rags To Riches IV

Accounting

Modules include General Ledger, Accounts Receivable and Accounts Payable.

\$199.95 retail; per module

\$499.50 retail; all three modules

Chang Labs; 5300 Stevens Creek Blvd.; San Jose, Calif. 95129; 408-246-8020

Business Graphics

Impact

Graphics

Displays numeric data in graphic form.

There are two parts to the program: the first allows a user to create slides of graphs, charts, text and symbols in a free format; the second plays the slides back in a predetermined sequence and fashion.

\$199.95 retail

Aegis Development; 2210 Wilshire Blvd., Ste. 277; Santa Monica, Calif. 90403; 213-392-9972

Communications

A-TALK 1.1

Communications

Includes support for Kermit, XMODEM, XMODEM-CRC, Compuserve B and Plain Text file transfers. Emulators for VT100, VT52, Heath H19, ANSI and TTY are provided.

\$49.95 retail

Felsina Software; 3175 S. Hoover St., Ste. 275; Los Angeles, Calif. 90007; 213-747-8498

A-Term

Communications

A terminal program that allows incoming data to be spoken through the speaker; data to be printed as it is coming over the line; support of protocols; auto-dialing and more.

\$49.95 retail

MegaSoft Limited; PO Box 1080; Battle Ground, Wash. 98604; 800-541-1541 or 206-687-5205

BBS-PC!

Bulletin board system

A versatile electronic bulletin board system that transforms an Amiga into an on-line information network.

\$99.95 retail

Micro-Systems Software, Inc.; 4301-18 Oak Cir.; Boca Raton, Fla. 33431; 305-391-5077 or 800-327-8724

D.A.S. Communications

Telecommunications

Features include VT100 emulation; support of 110 to 2400 baud; built-in bulletin board system with message base; and upload and download options.

\$30 retail

Developers of Advanced Software; 12455 Veterans Memorial Dr., Ste. 204; Houston, Texas 77014

Digital Link

File transfer; telecommunications

Enables a user to transfer programs, data and text from IBM PCs, PC-com-

patibles and the Macintosh to the Amiga and back. It also offers full terminal emulation for VT52, VT100, Televideo 925 series, ADM-3A, ANSI and TTY terminals.

\$69.95 retail; *Digital Link*

\$19.95 each retail; cables

Digital Creations; 1333 Howe Ave., #208; Sacramento, Calif. 95825; 916-344-4825

Genie

Integrated software

An integrated information management/electronic communications application program for computer conferencing and electronic mail in a networked environment.

Available second quarter, 1987

Data Dynamics, Inc.; PO Box 2728; Portland, Oreg. 97208; 503-626-4635

MacroModem

Telecommunications

Simplifies telecommunication sessions by allowing users to create sets of macro commands and companion help screens and direct log-on procedures. For example, one macro can include up to 35 keystrokes—or function-key commands, control codes, text, even other macros—and one keystroke can prepare and execute a terminal session.

Files of macros for each telecommunication service accessed and task performed can be constructed using the program's built-in editor and sample macro templates, and macro sets may be edited while on-line.

Macromodem is compatible with an Amiga's multitasking, multiwindow environment. A current terminal-capture file may be displayed as an independent task. On-line conference or electronic messages of up to 10 lines may be prepared and sent from a resizable Compose window, and a user-defined phone directory can store electronic-mail addresses.

\$69.95 retail

Kent Engineering & Design; 4215 Jordan Rd.; PO Box 178; Mottville, N.Y. 13119; 315-685-8237

MaxiComm

Communications; file transfer utility

An ANSI terminal and file transfer utility program that allows a user to connect an Amiga to public database services, public bulletin boards and another local computer.

\$49.95 retail

MaxiSoft; 2817 Sloat Rd.; Pebble Beach, Calif. 93953; 408-625-4104 or 800-942-6294

MiddleMan

Terminal emulator

Allows an Amiga to emulate the functions of the DEC VT100 terminal.

\$59.95 retail

Benaiah Computer Products, Inc.; PO Box 11165; Huntsville, Ala. 35814; 205-859-9487

NEW!
FROM THE CREATORS OF GIZMOZ™



D*Buddy™

CREATIVITY SET

ORDER TODAY!

The D*Buddy set is powerful, affordable and useful. Use each Buddy separately or with another tool or program. 512 K memory required. Can be used with hard disk or expanded memory. NO COPY PROTECTION.

Freeze Frame!

Instantly "Grab" any screen and place it in an IFF file for use with your Paint program or send to a printer for a "hard copy".

Print It!

Print your pictures created with Paint programs quickly. When you would like to print a picture, select it and let your PrintIt buddy do the job. Allows you to print one picture while you work on another.

Touch Up!

Handy mini-paint accessory to quickly touch up a painting or drawing. Combine drawings together, and use the handy graphic tools to make changes.

Poster Maker!

Blowup any IFF compatible picture to poster size dimensions. How big? You can specify size from one page to giant posters 8 feet wide.

SPECIAL INTRODUCTORY PRICE
\$79.95
COMPLETE SET

Slide Show

Create slideshows of your pictures for presentations. Use special effects for dissolves and screen wipes, pauses and repeating sequences.

Scissors

Clip images of any size from any screen and save them in the Amiga Clipboard or to an IFF file.

Scrap Book

Organize Amiga Clipboard and IFF files into a scrapbook for ease of use.

Color Match

Use this Buddy to make the colors of one image match the colors of another image. Useful when merging images into one picture.

Joy Mouse

Now use your joystick like a mouse. Eliminates the need to clear your desk for mouse motion.

and
Much More.



Name _____
Address _____
City _____
State _____
Zip Code _____
Country _____
Phone _____

Payment:
 VISA MC COD
 Check
 Money Order
Card Expiration Date ____/____/____
Card # _____

D*Buddy
CREATIVITY SET

Quantity _____ @ \$79.95 ea
Total _____
Tax _____
Handling _____
Shipping _____
TOTAL _____

Add 4% handling fee on Visa, MC, COD orders.
California residents add 6% sales tax.
Outside U.S.A. add \$20.00 shipping charge. All orders must be paid in US dollars.



Digital Creations

Call:

(916) **DIG-ITAL**

1333 HOWE AVENUE SUITE 208
SACRAMENTO, CALIFORNIA 95825

Amiga trademark of
Commodore-Amiga, Inc.
Dealer inquiries invited.

Communications Continued

Online!

Telecommunications

A telecommunications program that can transform any Amiga into a terminal capable of interacting with micros and mainframes, so users can exchange information, news and data with other computers.

Creative

Aegis Draw

Aegis Development, Inc., see review on page 70

Amiga Coloring Book

Clip art

Each *Amiga Coloring Book* is a one-disk volume of line art containing 20 files that a user can cut and paste to create his own graphics. Volumes include *The Sampler*, *The World and Borders*.

\$34.95 each retail

The Dragon Group, Inc.; 148 Poca Fork Rd.; Elkview, W.Va. 25071; 304-965-5517

Analytic Art

Graphics, pictures

Can be used to produce precise drawings of striking beauty and complexity. Users don't have to understand math, programming or art to develop interesting pictures.

\$59.95 retail

Crystal Rose Software; 109 S. Los Robles; Pasadena, Calif. 91101; 818-795-6664

Animator

Animation package

A metamorphic animation package that uses a concept called "tweening," which allows movement and change within each segment of the animation.

\$139.95 retail

Aegis Development, Inc.; 2210 Wilshire Blvd., Ste. 277; Santa Monica, Calif. 90403; 213-392-9972

Art Director

Allows a user to create storyboards and layouts, lay out and justify text, experiment with colors and typefaces, create and move artwork and more.

Available second quarter, 1987

Grey Associates; 250 Bruton Way; Atlanta, Ga. 30342; 404-851-9103

Art Pak, Vol. I

Clip art

Art Paks consist of precreated art that can be used with *Aegis Images*, *Animator* or *Draw*. Other programs that can read IFF file-formatted paint files can also be used.

Art Pak, Vol. I includes photograph-quality artwork of buildings for use as backdrops and pieces of cell animations for creating walking and moving animations. Because *Aegis Animator* can do both metamorphic and cell animations, these images

can be used with both styles.

\$34.95 retail

Aegis Development, Inc.; 2210 Wilshire Blvd., Ste. 277; Santa Monica, Calif. 90403; 213-392-9972

Bobshop; Soundshop

Animation; sound

Bobshop is a Blitter-Object and animation editor that exploits the Amiga's custom graphics circuitry.

Soundshop exploits the sound production circuitry of the Amiga. Waveforms may be read from files on the disk, displayed on the screen graphically and played through the Amiga's digital to audio converter. It supports the IFF standard for sampled sound data files.

\$49.95 retail; both programs

Revolution Software; PO Box 38; West Chester, Pa. 19381; 215-430-0412

D'Buddy

Creativity set

D'buddy is a creativity set that contains a collection of "buddies" that can be used separately or with another tool or program.

Freeze Frame! allows a user to instantly grab any screen and place it in an IFF file for use with a *Paint* program or to send to a printer; *PrintIt!* allows a user to print one picture while working on another; *Touchup* is a mini-paint accessory that can be used to touch up a painting or drawing; *Postermaker* blows up any IFF-compatible picture to poster-size dimensions; *Slideshow* creates slideshows of pictures for presentations; *Scissors* is used to clip images from any screen and save them to the Amiga Clipboard or to an IFF file; *Scrapbook* organizes Amiga Clipboard and IFF files; *Colormatch* is used to make the colors of one image match the colors of another image; and *Joymouse* allows a joystick to be used as a mouse.

\$79.95 retail

Digital Creations; 1333 Howe Ave., Ste. 208; Sacramento, Calif. 95825; 916-344-4825

DeluxePaint

Color graphics; drawing; design

A paint program loaded with special features such as zoom enlarging, split-screen magnification, color cycling, blend, smear, stretch, bend and rotate.

\$99.95 retail

Electronic Arts; 1820 Gateway Dr.; San Mateo, Calif. 94404; 415-571-7171

DeluxeVideo

Video production

Deluxevideo can be used to produce video slideshows, point-of-sale videos, animated commercials, business presentation videos, interactive educational videos, animations and home versions of MTV.

\$99.95 retail

Electronic Arts; 1820 Gateway Dr.; San Mateo, Calif. 94404; 415-571-7171

DNA Music; Protein Music;

Fractal Music

Sequence mapping

DNA Music allows a user to "hear" DNA by mapping a DNA sequence directly into a musical sequence.

Protein Music allows a user to "hear" protein by mapping a protein sequence directly into a musical sequence.

Fractal Music generates music and synchronized high-resolution graphics based on fractal mathematics.

\$19.95 each retail

Sterling Software; 77 Mead St.; Bridgeport, Conn. 06610; 203-366-7775

FutureSound

Digital sound recorder

FutureSound makes it possible to record, play back and store any sound directly on the Amiga. Features include multitrack recording, variable recording speeds and variable playback speeds.

\$175 retail

Applied Visions; 15 Oak Ridge Rd.; Medford, Mass. 02155; 617-488-3602

Graphicraft

Graphics creation

An entry-level graphics design and paint program that features 32 colors and special effects such as color animation.

\$49.95 retail

Commodore Business Machines, Inc.; 1200 Wilson Dr.; West Chester, Pa. 19380; 215-431-9180

Images

Creative

Allows a user to create paintings with as many as 32 different colors. Colors can be mixed and changed on a palette to get the exact colors needed. There are 20 different brushes and 16 patterns available, all of which can be modified for custom designing.

\$79.95 retail

Aegis Development, Inc.; 2210 Wilshire Blvd., Ste. 277; Santa Monica, Calif. 90403; 213-392-9972

Imagine This

Image processing; software development

Image processing software system that turns an Amiga computer into an image processing workstation.

Zoxso; PO Box 283; Lowell, Mass. 01853; 617-655-9548

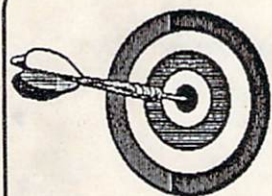
Instant Music

Music composition, recording, playback

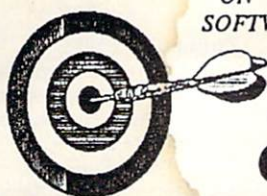
Instant Music allows a user to create his own compositions, record them and play them back.

The program keeps a user's creations within musical boundaries, so they always sound good. It does this by introducing a musical "template," which is a set of guidelines that keeps a user within a chosen key and tempo.

Instant Music lets a user make music in



COMPUTER BEST



"ON TARGET WITH THE RIGHT SOFTWARE AT THE RIGHT PRICE!!"

Hours: 11 am - 9 pm Eastern
CUSTOMER SUPPORT
602-258-4943

ORDERS ONLY:

1-800-221-6086 US
1-800-843-3485 AZ

AMIGA™

Commodore 64/128

Ace of Aces	\$19
Archon	\$9
Arctic Fox	\$26
Auto Duel	\$32
Balblazer	\$25
Bard's Tale	\$26
Bard's Tale II	\$26
Battle Group	\$39
Bop'n Wrestle	\$18
Cadpak 64 Enhanced	\$29
Carniers at War	\$36
Cherpak 64	\$29
Clip Art 1	\$19
Clip Art 2	\$26
Cobal 64	\$29
Crossword Magic	\$32
Doodle	\$25
Doodle Visits Prinkshop	\$23
Etle	\$21
F-15 Strike Eagle	\$27
Fast Load	\$27
Fast Tracks	\$22
Fightright	\$21
Fight Simulator II	\$32
Fight Sim. Scenery Disk	\$14
Football (Sublogic)	\$30
G.E.O.S.	\$42
G.E.O.S. Fontpak #1	\$21
Gunship	call
Hardball	\$19
Infiltrator	\$18
Infocom Titles	\$18 - \$39
Jet	\$26
Jet Combat Simulator	\$22
Karate Champ	\$24
Kennedy Approach	\$26
Kung Fu - Fist of Fury	\$20
Kung Fu - Sicks of Death	\$19
Kung Fu Master	\$24
Law of the West	\$19
Leaderboard	\$24
Little Computer People	\$22
Mach 5	\$23
Marble Madness	\$26
MasterType	\$26
Math Blaster	\$31
Mech Brigade	\$40
M.U.L.E.	\$9
Newroom	\$34
Ogre	\$26
One on One	\$9
Pinball Construction Set	\$9
Print Shop	\$32
Print Shop Companion	\$21
Print Shop Libs 1, 2, or 3	\$15
Printmaster	\$26
Printmaster Art Gallery	\$16
Project Space Station	\$29
Questron	\$27
Racing Destruction Set	\$9
Realm of Impossibility	\$9
S'More	\$43
Sideways	\$15
Silent Service	\$23
Space Taxi	\$20
Star Fleet	\$30
Star Rank Boxing	\$19
Summer Games	\$26
Super C Compiler	\$44
Super Bowl Sunday	\$23
Super Huey	\$14
Super Huey II	\$14
Super Pascal	\$32
Switcheroo w/Sideways	\$45
Sylvia Porter Pers. Fin.	\$45
Touchdown Football	\$9
Ultima 4	\$39
Ultimate Wizard	\$22

U.S.A.A.F.	\$22
Vip Terminal	\$29
Winter Games	\$27
World Champ Karate	\$27
World's Greatest Football	\$40
Xper	\$23

Commodore C-128

Basic 128	\$44
CMS Accounting	\$126
Cadpak 128	\$43
Cherpak 128	\$30
Data Manager 128 w/rep.	\$56
Kelek 128 Comm. Center	\$140
Mach 128	\$32
Modem 128 1200 Baud	\$143
Mouse 128	\$32
Multiplan 128	\$42
Paperback Dictionary	\$9
Paperback Planner 128	\$33
Paperback Writer 128	\$36
Paperclip 128	\$52
Super C-128	\$45
Superbase 128	\$65
Superscript 128	\$52
Switchcalc 128 w/Sideways	\$49
Vizastar 128	\$86
Vizawrite 128	\$50
Wordwriter 128 w/spell	\$42

Hardware & Misc.

6-Plug Surge Suppressor	\$11
A/B Switch Box	\$63
C64c, 1541, & Color Monitor	call
Compuerve Starter Kit	\$20
Infocom Invidious	\$5
Maxtron C64 Power Supply	\$21
McPen Lightpen	\$41
Omnitronix RS-232 Adapter	\$37
Voices Master	\$70
Wood Bat Joystick	\$16
Xatoc Jr. Interface	\$36
Xatoc Super Interface	\$64
Color Ribbons and Paper	call

Books

Amiga Dos Manual	\$18
Amiga Prog. Guide	\$12
Amiga Prog. Handbook	\$19
Bag. Guide to the Amiga	\$12
Advanced Amiga Basic	\$13
Inside Amiga Graphics	\$13
Kids and the Amiga	\$11

Other

1200B Modem	\$176
3.5 DD/DD 10 pack	\$31
3.5 SS/DD 10 pack	\$18
Covers - Tan or Brown	\$19
Modem Cable	\$14
Mousepad (small)	\$6
Mousepad (large)	\$7
Pocket Pak Disk Holder	\$9
Printer Cable	\$14
Oak Disk Holder (60)	\$31

GAMES

Adventure Const. Set	\$26
Archon	\$26
Archon II Adept	\$26
Arctic Fox	\$26
Auto Duel	\$32
Bard's Tale	\$26
Borrowed Time	\$26
Brattacas	\$30
Cheesmaster 2000	\$29
Computer Baseball	\$26
Flight Simulator	call
Hacker	\$29
Hacker II	\$32
Halley Project	\$29
Infocom Games	\$24 - \$32
Marble Madness	\$32
MasterType	\$28
Mindshadow	\$29
Mindwalker	\$35
Rouge	\$25
Skyfox	\$26
Temple of Asphalt Trilogy	\$28
Ultima III	\$39

Hardware

Ext. 5.25" Drive w/tran.	\$174
Ext. 3.5" Drive	\$212
256K RAM Expansion	\$78
2MB RAM Expansion	\$595
A-Time	\$49
Printer - Okidata 292	\$595
Printer - Okimate 20	\$228
Sony KV1331 Mon./TV	\$469
T-Card w/256K RAM	\$589
T-Disk	\$1,193
RF Modulator	\$30
Amiga/Mon./Ram Exp.	call

Programming & Utilities

BBS PC	\$62
C-64 Emulator	call
DBC 3 Library	\$127
DiskWik	\$36
Lattice "C" Compiler	\$115
Lisp	\$139
Mac Library	\$84
Manx "C" (Developers)	\$203
Modula 2 (Developers)	\$112
Pascal	\$70
Schematics	\$22
Screen Editor	\$85
Text Utility	\$64

Sound and Graphics

Aegle Draw	\$111
Animator/Images	\$99
Computer Art Gallery	\$14
Deluxe Music	\$65
Deluxe Paint	\$52
Deluxe Print	\$65
Deluxe Video	\$65
Digi-View Digitizer	\$143
Digital Link	\$55
Dpaint Art and Utility Disk	\$19
Dprint Art and Utility Disk	\$19
Future Sound	\$129
Gallery of Images	\$14
Grabbit	\$23
Graphicraft	\$29
Images	\$52
Instant Music	\$32
Midi Device	\$38
Penmouse	\$287
Sound Digitizer	\$89
Sound Scape Pro	\$125
Zuma Fonts	\$23

Educational

Discovery Math	\$24
Discovery Spelling	\$24
Kid Talk	\$35
Little Computer People	\$31
Speller Bee	\$35
Talking Coloring Book	\$23
Queue Tiles	\$44

Business and Home

2 + 2 Home Management	\$64
Aegle Impact	\$128
Analyze	\$63
Financial Cookbook	\$33
Flow	\$74
Gizmox	\$37
Maxi-Comm	\$32
Maxi-Desk	\$45
Maxi-Plan	\$97
MI Amiga File	\$61
MI Amiga Ledger	\$61
MI Amiga Word	call
On Line!	\$48
Organize	\$63
Rags to Riches .GL	\$139
Scribble	\$63
Textcraft	\$54
Unicalc	\$61
VIP Professional	\$145

CALL IF YOU DON'T SEE IT!!

Mail Orders to: Computer Best
P.O. Box 48407
Phoenix, Arizona 85075



Arizona Residents add 6.7% Sales Tax •• \$3.00 Minimum Shipping

Creativity Continued

real time, using a mouse with a method known as "mousejamming." In mousejamming mode, a user plays along with the computer, playing the fourth instrument or voice while the computer plays the other three.

The program comes with more than 80 complete songs to experiment with and more than a dozen digitized instrument sounds to choose from.

A user can adjust the tempo and volume for each voice independently of the others. In addition, the program allows zooming in and out, so a user can view a single measure or the entire song on screen.

A unique color coding of its digitized instruments lets a user see which instrument is doing what, and to follow each individual note as it is played.

Output is saved in IFF files in Simple Music format, making them compatible with other programs such as the *Deluxe Music Construction Set* and *DeluxeVideo*.

\$49.95 retail

Electronic Arts; 1820 Gateway Dr.; San Mateo, Calif. 94404; 415-571-7171

The Music Studio

Music composition

A music program that features stereo composition and MIDI capabilities and includes a complete library of instruments, sound effects and music.

\$59.95 retail

Activision, Inc.; PO Box 7286; Mountain View, Calif. 94039; 415-960-0410

■ Pitchrider 1000

MIDI interface

Utilizing IVLs pitch-recognition technology, the *Pitchrider 1000* accepts and then converts sound waves into digital information almost instantaneously.

Using MIDI, it allows a user to utilize MIDI-equipped devices, such as synthesizers and samplers, using monophonic acoustic instruments. This provides access to a full range of synthesizer sounds previously available to keyboard players only.

The *Pitchrider 1000* also enables a user to interact with MIDI software for the Amiga, using his own instrument. It has its own pitch error display, using the Amiga monitor to help a user stay in tune.

\$249 retail

DOD Electronics Corp.; 5639 S. Riley Ln.; Salt Lake City, Utah 84107; 800-453-7484 or 801-268-8400

■ Waveform Easel

Allows a user to draw with the mouse a sound table of 256 values to create different sounds and tone qualities.

The program is compatible with the *DNA*, *Protein* and *Fractal* music programs.

\$19.95 retail

Sterling Software; 77 Mead St.; Bridgeport, Conn. 06610; 203-366-7775

Zuma TV*TXT

A video production tool that enables a user to produce high-resolution, animated video titles on the Amiga.

\$249.95 retail

Brown-Wagh Publishing; 16795 Lark Ave., Ste. 210; Los Gatos, Calif. 95030; 408-395-3838

Database

■ Abase

Database manager

Abase provides access to multiple databases and index files from a menu-driven user interface or through a library of routines. It allows multiple tasks to access database files and supports record and file locking.

In addition to giving non-programmers a traditional method of accessing data in different databases, the program gives users the ability to import other database files, such as *Dbase*, and export ASCII files.

Program specifications include a maximum 40 files open at one time (memory permitting), a maximum 10 index files per database (memory permitting), 4,000 bytes maximum record size, 128 fields per record, six field types total and more. Available third quarter, 1986; \$100 retail Computer Power Unlimited; 2014 W. Chandler Ave.; Santa Ana, Calif. 92704; 714-557-3358

A Filer, A Report

Database

A Filer features include creation of disk files; sorting of information; printing out mailing labels; printing out a sorted or partially selected list; 12 fields per record and more. \$49.95 retail

A Report features include creation of custom report headings; page numbering; column-type or multiple-line reports; calculation of totals and more. \$49.95 retail MegaSoft Limited; PO Box 1080; Battle Ground, Wash. 98604; 800-541-1541 or 206-687-5205

Amiga Record Manager

Features include 16 fields with user definable input and length; sorts on any field; arranges into zip code order or alphabetically; prints mailing labels; accounts ledger; and on-line help.

\$38 retail

HC Software Australia; GPO Box 2204; Adelaide, South Australia 5001; 08-428377

DATAMAT

Database manager

A menu-driven relational database management system for micro-to-mainframe applications that has an identical user interface across hardware and operating systems. It currently runs under AmigaDOS, MS-DOS, XENIX, UNIX and VMS.

\$495 retail; A300 (AmigaDOS) or MX300 (MS-DOS)

\$350 retail; A200 (AmigaDOS) or MX200 (MS-DOS)

\$125 retail; A100 (AmigaDOS only)

Transtime Technologies Corp.; 797 Sheridan Dr.; Tonawanda, N.Y. 14150; 716-874-2010

The Data System

A full-featured database management package that builds files, reports and lists with posting, totals, subtotals, calculations, etc., all on up to nine conditions.

\$200 retail; without ABasiC

\$210 retail; with ABasiC

Gander Software, Ltd.; 3223 Bross Rd., "The Ponds"; Hastings, Mich. 49058; 616-945-2821

dBMAN

Relational database manager

A *Dbase*-compatible relational database manager that can be used for developing databases and database-related application programs.

\$149 retail

VersaSoft; 4340 Almaden Expressway; San Jose, Calif. 95118; 408-723-9044

FoxFile

File management

A file manager that will accept up to 65,536 records.

\$50 retail

Foxware; 1554 Park Creek Ln.; Atlanta, Ga. 30319

InfoBase

Database

A database program that provides many powerful functions. Each record can contain up to 200 fields of information.

\$45 retail

Harvsoft; PO Box 725; Kenmore, N.Y. 14217; 716-877-3510

MiAmiga File

Database management

A database management system that presents its databases in both list (spread-sheet-like) and form formats. Sorting and selection capabilities are also provided. Up to 32 levels of progressive sorting are supported.

\$99.95 retail

SoftWood Company; PO Box 2280; Santa Barbara, Calif. 93120; 805-966-5884

■ Organize!

Custom filing system

Organize! helps a user create a custom filing system for organizing business records, contact lists, recipes, etc.

The program features up to 128 fields for each form or record and up to 254 bytes per field, with a maximum of 4,000 bytes per record.

Other features include pull-down menus, mail-merge functions, abbreviated entries for simplified searches, printed reports and more.

\$99.95 retail

Micro-Systems Software, Inc.; 4301-18 Oak

Cir.; Boca Raton, Fla. 33431; 305-391-5077 or 800-327-8724

■ Superbase

Database manager

Superbase allows business and home users to simplify, control and organize information.

The program is menu-driven and takes advantage of the Amiga's point-and-click and mouse-and-menus environments. It requires no programming, but lets users access its dataBASIC Database Management Language to create custom applications.

Superbase, which offers unlimited files, open files, fields per record, sort levels, search criteria, reports and screen formats and more, can work with a RAM disk and supports all standard peripherals, including hard disk drives.

Progressive Peripherals & Software, Inc.; 464 Kalamath St.; Denver, Colo. 80204; 303-825-4144

Integrated

■ Logistix

Project management; database; graphics

Logistix is a spreadsheet-based integrated program that incorporates project-management, database and graphic functions. It uses *Lotus 1-2-3*-style commands and reads *1-2-3*, *Supercalc*, *Dbase*, DIF and many other file formats.

A 1,024-column by 2,048-row work sheet lets users manage information, and a built-in utility allows them to print their spreadsheets straight-up or sideways.

The project-management portion of the program lets users track variables and time units (in half-hour increments) involved in a task. The effects of holidays, vacations, sick days taken by employees or changes in working hours can be graphically displayed. So can the effects of time and schedule changes on resources and cash flow.

Finally, *Logistix* performs critical-path analyses, date arithmetic and what-if and logical operations, as directed by its users. Its presentation-quality graphics program produces more than 20 types of graphs.

\$249.95 retail

Progressive Peripherals & Software, Inc.; 464 Kalamath St.; Denver, Colo. 80204; 303-825-4144

VIP Professional

VIP Technologies, see review on page 78

Miscellaneous Management

Computer Co-Pilot

Assists a user at his communication tasks, while learning about the user and his relation to the world. It maintains a

complete personal database and world model.

Available fourth quarter, 1986; \$900 retail
Alive Systems Group; PO Box 369; Big Sur, Calif. 93920; 415-332-8018

D.A.S. Business Finance

Assists business owners in making financial decisions and planning for future business expansion.

\$30 retail

Developers of Advanced Software; 12455 Veterans Memorial Dr., Ste. 204; Houston, Texas 77014

Gizmoz Productivity Set

Desktop accessories

Contains 18 desktop accessories: calendar, Rolodex, memo pad, black book, calculator set, hot key, free list display, cuckoo alarm clock, terminal package, announcer, graph package, pop-up cards, super life, data compressor and data encryptor.

\$69.95 retail

Digital Creations; 1333 Howe Ave., #208; Sacramento, Calif. 95825; 916-344-4825

MaxiDesk

Business tools

Comprised of a set of useful business tools, including a calculator, appointment calendar, alarm clock, phone book, keyboard helper and notepad.

\$70 retail

MaxiSoft; 2817 Sloat Rd.; Pebble Beach, Calif. 93953; 408-625-4104 or 800-942-6294

Time & Task Planner

A time management tool for up to five users that provides each user with a 60-item To Do List; a 60-item Future Planning List; an Appointment Scheduler; a Copy to Scheduler utility; and a Calendar utility.

\$100 retail; without ABASIC

\$110 retail; with ABASIC

Gander Software, Ltd.; 3223 Bross Rd., "The Ponds"; Hastings, Mich. 49058; 616-945-2821

Programming

3D Graphics Library

Available fourth quarter, 1986
Computer Food, Inc.; 2215 Sarah Ct., Ste. 80H; Norcross, Ga. 30093; 404-851-9103

A Copier

Nibbler

\$39.95 retail

MegaSoft Limited; PO Box 1080; Battle Ground, Wash. 98604; 800-541-1541 or 206-687-5205

Advanced String Library

\$49.95 retail

True BASIC, Inc.; 39 S. Main St.; Hanover, N.H. 03755; 603-643-3882

■ AEdit

Screen editor

Aedit is a general-purpose text editor that places specific emphasis on program text entry. It also handles the day-to-day text entry necessary for practically every function a computer is called upon to perform.

Some features of this program include Overstrike and Insert modes; Writer's and Programmer's modes; a 300-line Undo Buffer, which restores text; Move, Echo, Cut, Copy and Paste commands; an Append mode for storing anything—from one line of text to a full file—at the end of a file already on disk; and more.

The program comes in either a full-featured or limited version. *Aedit Version 2* is the larger model. It features a full set of menus and commands. *Aedit Version 1*, the smaller model, features a smaller command subset. According to its vendor, *Aedit Version 2* is now the preferred version.

\$35 retail

DRM Programs; 1329 Arthur Ave.; Las Vegas, Nev. 89101; 702-457-9489

Amiga Lattice C Compiler

\$149.95 retail

Lattice, Inc.; PO Box 3072; Glen Ellyn, Ill. 60138; 312-858-7950

Amiga Lattice dBC III Library

\$150 retail

Lattice, Inc.; PO Box 3072; Glen Ellyn, Ill. 60138; 312-858-7950

Amiga Lattice Maclibrary

\$100 retail

Lattice, Inc.; PO Box 3072; Glen Ellyn, Ill. 60138; 312-858-7950

Amiga Lattice Make Utility

\$125 retail

Lattice, Inc.; PO Box 3072; Glen Ellyn, Ill. 60138; 312-858-7950

Amiga Lattice Screen Editor

\$100 retail

Lattice, Inc.; PO Box 3072; Glen Ellyn, Ill. 60138; 312-858-7950

Amiga Lattice Text Utilities

\$75 retail

Lattice, Inc.; PO Box 3072; Glen Ellyn, Ill. 60138; 312-858-7950

Amiga-Lint

Diagnostic facility for C

\$98 retail

Gimpel Software; 3207 Hogarth Ln.; Collegeville, Pa. 19426; 215-584-4261

Amiga MS-DOS C Cross Compiler

\$250 retail

Lattice, Inc.; PO Box 3072; Glen Ellyn, Ill. 60138; 312-858-7950

Amiga Panel Forms Manager

\$195 retail

Lattice, Inc.; PO Box 3072; Glen Ellyn, Ill. 60138; 312-858-7950

Programming Continued

Amiga Programmer's Library

Software development; file transfers
\$200 retail
MaxiSoft; 2817 Sloat Rd.; Pebble Beach,
Calif. 93953; 408-625-4104 or
800-942-6294

■ APL.68000 for the Commodore Amiga

Programming
APL.68000 provides a friendly environment in which to program in APL. It is available in both a standard APL character-set version and in a keyword version.

Features include a built-in function editor; built-in VT100 APL/ASCII terminal emulation; full Clipboard support for data exchange; pull-down menus; full printer support; runs in its own window; user-defined dialogue and alert boxes; arbitrary I/O via serial ports; a session manager, which allows editing of screen lines; and more.

\$299 retail
Spencer Organization, Inc.; 366 Kinderkamack Rd.; PO Box 248; Westwood, N.J. 07675; 201-666-6011

Aztec C68k/Am

C software development system
\$249 retail; *Aztec C68k/Am-d*
\$499 retail; *Aztec C68k/Am-c*
Manx Software Systems; PO Box 55;
Shrewsbury, N.J. 07701; 800-221-0440 or
201-542-2121

Commodore-Amiga

Programming languages
\$199.95 retail; *Amiga LISP*
\$149.95 retail; *Amiga C*
\$99.95 retail; *Amiga Pascal*
\$99.95 retail; *Amiga Macro Assembler*
Commodore Business Machines, Inc.; 1200
Wilson Dr.; West Chester, Pa. 19380;
215-431-9180

■ cxref

C cross-reference utility
This utility gives programmers information concerning variable declaration and usage.

Command-line arguments allow developers to determine the level of detail contained in their cross-reference listings.

Configuration files provide a way to customize the cross-reference utility for any particular C compiler.

\$49.95 retail
Meta-Soft, Inc.; PO Box 7293; Las Cruces,
N.M. 88006; 505-523-0371

■ HexDump

HexDump allows a user to display and print the contents of any file.

The program's formatted display shows all characters, whether printable or not, and their respective hexadecimal values. The display may be directed to the screen or to a printer.
\$19.95 retail

Northwest Machine Specialties; 3611
Joshua NE; Salem, Ore. 97305

Key To C

Developer's package
\$34.95 retail
Data Research Processing, Inc.; 5121
Audrey Dr.; Huntington Beach, Calif.
92649; 714-840-7186

Metacomco

Programming
\$199.95; *Cambridge LISP*
\$99.95; *ISO Pascal*
\$99.95 retail; *Macro Assembler*
Available October, 1986; *Amiga Shell*
Tenchstar, Inc./Metacomco; 5353 #E Scotts
Valley Dr.; Scotts Valley, Calif. 95066;
408-438-7201

■ The Metacomco Toolkit

Programming aids
The Metacomco Toolkit consists of several programming tools: Pipes, Librarian, Disassembler, Pack & Unpack, Enlarge, Browse and AUX CLI.

Pipes are a way of connecting output from one program to the input of another program without using cumbersome temporary files.

An Amiga library consists of a series of object modules, each consisting of one or more program units. The Librarian allows inspection and selective updating of the library.

The Disassembler produces a source assembly file from any file output by a compiler, linker or assembler, retaining all of the information in the binary file.

Pack & Unpack allows text files to be condensed and later expanded.

Enlarge produces messages in enlarged format, allowing creation of program headers, titles, etc.

Browse features pausing after each page, searching for strings, advancing through files line by line, rewinding, etc.

AUX CLI allows a second terminal to be connected to the Amiga's serial port and used as an auxiliary CLI, expanding the Amiga into a true multiuser system.

\$49.95 retail
Tenchstar, Inc./Metacomco; 5353 #E Scotts
Valley Dr.; Scotts Valley, Calif. 95066;
408-438-7201

Metadigm Software

Programming tools
\$95 retail; *Metascope: The Debugger*
\$85 retail; *Metascribe: The Editor*
\$69.95 retail; *Metatools I*
Metadigm, Inc.; 19762 MacArthur Blvd.,
Ste. 300; Irvine, Calif. 92715;
714-955-2555

The Micro Forge Programming

Programming utilities
\$69.95 retail; *Programmer's Editor*
\$89.95 retail; *Prolog Level 1*
The Micro Forge; 398 Grant St. SE;
Atlanta, Ga. 30312; 404-688-9464

Micro-shell

Programming
\$79.95 retail
Meta-Soft, Inc.; PO Box 7293; Las Cruces,
N.M. 88006; 505-523-0371

Multi-Forth—Amiga Version

Software development
\$179 retail
Creative Solutions, Inc.; 4701 Randolph
Rd., Ste. 12; Rockville, Md. 20852;
301-984-0262 or 800-367-8465

Program Generator

\$400 retail; without ABASIC
\$410 retail; with ABASIC
Gander Software, Ltd.; 3223 Bross Rd.,
"The Ponds"; Hastings, Mich. 49058;
616-945-2821

Programmers Toolkit

Available fourth quarter, 1986; \$124.95
retail
MicroDimensions, Inc.; 455 North University
Ave., Ste. 206; Provo, Utah 84601;
801-377-0933

■ Screen Mapper

Screen Mapper contains programs that allow a user to design and use multifield screens.

One program allows a user to design the screen as it would look when in use; another can be used as a subroutine to display information in variable fields and allow entry in those fields.

The subroutine will do all of the input/output functions from and to the screen. When the subroutine is in control, a user can skip from field to field and enter only the class of characters legal for that field (alpha or numeric, etc.).

\$89.95 retail
Northwest Machine Specialties; 3611
Joshua NE; Salem, Ore. 97305

Sorting & Searching

\$49.95 retail
True BASIC, Inc.; 39 S. Main St.;
Hanover, N.H. 03755; 603-643-3882

Sprite/Graphics Editors

\$50 retail
Scott Lamb; 205C Heights Ln.; Ft. Worth,
Texas 76112; 817-496-9220

■ TDI Modula-2

Programming language
TDI Modula-2 is a programming language designed to make it easier to conceive, write and maintain software.
The Regular Version of the program features a desktop that presents *Modula-2* files as icons and automates the edit/compile/link cycle; a desk accessory to set directory search paths, heap size of a program and several other linker and compiler options; an enhanced editor with global search and replace, the ability to set and jump to markers, auto ident options, keyboard macros and more; an optimization pass in the linker that removes all uncalled

procedures and reduces code size; the ability to write desktop accessories with *Modula-2*; modules for full Atari BIOS (basic input/output system) and XBIOS interfaces; and more.

The Developer's Version includes a symbolic debugger that presents programs in symbolic form and uses GEM multiwindows, a high-level GEM application library, source-file cross-referencer, link and code-file disassembler, symbol file decoder, the source code for a RAM disk driver and printer spooler in *Modula-2* and more.

\$89.95 retail; Regular Version
\$149.95 retail; Developer's Version
TDI Software, Inc.; 10410 Markison Rd.;
Dallas, Texas 75238; 214-340-4942

TxEd

Text editor
\$59.95 retail
Microsmiths, Inc.; PO Box 561; Cambridge, Mass. 02140; 617-576-2878

True BASIC Language System

\$149.90 retail
True BASIC, Inc.; 39 S. Main St.;
Hanover, N.H. 03755; 603-643-3882

True BASIC Runtime Package

Application development
The *Runtime Package* contains everything needed to create a stand-alone application. The *Language System* is used for develop-

ment, and the *Runtime Package* links a user's main program and external libraries with the *Runtime* module to produce a self-contained "clickable" program.

The *Runtime Package* reduces the memory required to run programs, speeds up loading and start-up time and gives a user the same execution speed as the *Language System*. No syntax changes are necessary. \$150 retail; non-commercial licensing \$500 retail; unlimited commercial licensing
True BASIC, Inc.; 39 S. Main St.;
Hanover, N.H. 03755; 603-643-3882

ZLI

Line interpreter
\$49.95 retail
Zoxso; PO Box 283; Lowell, Mass. 01853;
617-655-9548

Specific Application

3-D Graphics Library

Three-dimensional graphics
The *3-D Graphics Library* allows a user to create three-dimensional images. \$49.95 retail
True BASIC, Inc.; 39 S. Main St.;
Hanover, N.H. 03755; 603-643-3882

Digital Building System

Graphically simulates digital electronic

circuits on the Amiga's hi-res screen.

Standard schematic, logic and integrated circuit symbols are used to build the circuit on the screen using the mouse or keyboard to move parts around.

\$299 retail
MicroMaster Software; 1289 Brodhead Rd.; Monaca, Pa. 15061; 412-775-3000

Dynamic-CAD

Computer-aided design
A two-dimensional drafting system with isometric capabilities that can be combined with many models of printers, plotters and digitizers. \$495 retail
MicroIllusions; PO Box 3475; Granada Hills, Calif. 91344; 818-360-3715

ES5C Calculator

Programmable scientific calculator
A software module that emulates a programmable scientific calculator. It resides in its own window and can run concurrently with other applications. Emusoft Corp.; 1400 Chicago Ave., Ste. 303; Evanston, Ill. 60201; 312-869-6676

The Film Production Toolkit

Scheduling and budgeting motion pictures
Designed to aid directors, production managers and assistant directors. The program is written in the C programming language, and is designed to

MEGATRONICS SAVES YOU MONEY ON QUALITY PRODUCTS AND SOFTWARE FOR AMIGA® SYSTEMS

Modems

300/1200 Baud **\$109.00**

- Hayes command compatible
- 8 LED status indicators
- Auto answer and dial
- Free CompuServe access
- FCC approved
- Full one year warranty

2400 Baud **\$319.00**

Save money by increasing communication speed.

Dust covers **\$14.95**

Memory Expansion **\$85.00**

boost your Amiga to 512K for only

We beat any advertised price on any in stock items!

Programs

Spellcraft **\$24.95**

A spelling checker with a 40,000 plus word dictionary and it allows you to add more. Fully compatible with editors such as Textcraft.

Merge Master **\$24.95**

Insert personalized information in your word processing documents.

Talking Trivia **\$19.95**

With over 2,000 questions in each category you can use the editor to add more words or select several game variations.

Carrying cases

Designed with high density foam and water and tear proof Cordura fabric to protect your Amiga system, accessories and color monitor.

New products

Joysticks

Standard and infra-red wireless models available at super prices

Stereo Speaker System

built in amplifiers let you bring your Amiga to life and enjoy the full effect of it's incredible sound and music capabilities.

TO ORDER

1-800-232-6342 Nationwide
801-752-2642 in UTAH
Telex: 5106012869

MEGATRONICS™

55 NO. MAIN STREET, LOGAN, UTAH 84321

Visa • Mastercard • C.O.D.

Amiga is a trademark of Commodore-Amiga, Inc.

trademark of Megatronics Inc.

Specific Application Continued

connect with a series of building blocks that will interface the program's scheduling and budgeting programs.

The system includes a Wizard feature that answers what-if questions about any planned or unplanned circumstances a producer may encounter.

\$1,500 retail

Film Production Toolkits; 3114 Fifth St.; Santa Monica, Calif. 90405; 213-396-1199

Grade Manager

Gradebook and statistics

Allows for the entry of any type of grade entry with full category weighting and renaming, automatic conversion of grades to a true 100-point scale and after-the-fact grade maintenance.

\$89.95 retail

Associated Computer Services; 1306 E. Sunshine; Springfield, Mo. 65804; 417-887-7373

Lionheart Business Software

Business-analysis books with software

\$145 retail; *Business Statistics*

\$145 retail; *Experimental Statistics*

\$150 retail; *Multivariate Analysis*

\$145 retail; *Forecasting and Time Series*

\$150 retail; *Sales and Market Forecasting*

\$110 retail; *Decision Analysis Techniques*

\$95 retail; *Linear and Non-linear*

Programming

\$95 retail; *Pert and Critical Path Techniques*

\$110 retail; *Optimization*

\$75 retail; *Exploratory Data Analysis*

\$145 retail; *Quality Control and Industrial Experiments*

\$150 retail; *Statistics for Marketing*

\$125 retail; *Monte Carlo Simulations*

Lionheart Press; PO Box 329; Alburg, Vt. 05440; 514-933-4918

LogicWorks

Integrated logic design

A tool that contains schematic diagram entry and simulation capabilities, user-definable macro devices, PROM and PLA support and interactive operation.

\$199.95 retail

Capilano Computing Systems, Ltd.; PO Box 86971; N. Vancouver, B.C., Canada V7L 4P6; 604-669-6343

PCLO

Printed circuit-board layout

A multiple-layer, interactive auto-routing CAD tool for engineers and technicians who want complete control over their printed circuit-board artwork.

\$1,024 retail

\$75 retail; demo

SoftCircuits, Inc.; 401 SW 75th Terrace; North Lauderdale, Fla. 33068; 305-721-2707

Quiz Master

Music

Allows a teacher to create and give tests or quizzes directly on the computer. Two

additional support packages, *Music Student I and II*, take the student through all major areas of music theory such as symbol recognition, scales, chords, etc.

\$79.95 retail; *Quiz Master*

\$49.95 retail; *Music Student I and II*

Associated Computer Services; 1306 E.

Sunshine; Springfield, Mo. 65804;

417-887-7373

SciCalc

Scientific calculator

A full-featured scientific calculator. Features include algebraic hierarchy with automatic constant, 10 memories, powers, logs, trig, hyperbolics, statistics and polar/rectangular conversion.

\$14.95 retail

DESKWARE; PO Box 47577; St. Petersburg, Fla. 33743

Station Manager

A full-featured television station management system. The first module to be completed is the weather graphics system.

Additional modules will be available to handle interoffice mail, teleprompting, downloading from news and weather services and production of news "copy." This will link together all newsroom services.

\$1,995 retail; *Station Manager*

\$995 retail; *Station Manager Weather Graphics*

Associated Computer Services; 1306 E.

Sunshine; Springfield, Mo. 65804;

417-887-7373

Spreadsheets

Amiga Unicalc Spreadsheet

An electronic spreadsheet that provides a 256-column by 1,024-row processing area.

\$79.95 retail

Lattice, Inc.; PO Box 3072; Glen Ellyn, Ill.

60138; 312-858-7950

Analyze!

Spreadsheet

A spreadsheet program that provides a 256-column by 8,156-row processing area.

\$99.95 retail

Micro-Systems Software, Inc.; 4301-18 Oak Cir.; Boca Raton, Fla. 33431; 305-391-5077 or 800-327-8724

■ BTS

Spreadsheet

BTS is a spreadsheet program that contains a maximum work-sheet size of 1,000 rows by 1,000 columns.

The program features math, statistic and financial functions; the logical operators And, True and False; standard formatting options; variable column widths with counter; a sparse matrix storage method; automatic or manually selected calculations; calculations by row or column; shows values or formulas in each cell; protects an entire spreadsheet file or selected portions; and more.

\$69.95 U.S. retail; \$99.95 Canada retail
Batteries Included; 30 Mural St.; Richmond Hill, Ontario, Canada L4B 1B5; 416-881-9816

MaxiPlan

Spreadsheet

A spreadsheet, graphics and database program that provides a 512-column by 16,384-row processing area and what-if analysis with numerical data.

\$150 retail

MaxiSoft; 2817 Sloat Rd.; Pebble Beach, Calif. 93953; 408-625-4104 or 800-942-6294

Utilities

A Disk

Two-drive emulator

A two-drive emulator that allows a user to load and run programs without continually swapping the Workbench disk.

\$29.95 retail

MegaSoft Limited; PO Box 1080; Battle Ground, Wash. 98604; 800-541-1541 or 206-687-5205

Clock For Amiga

Utility

A small cartridge that plugs onto the side of the Amiga. The time of day is set automatically each time the computer is turned on, and the clock will run for two years even when the Amiga is turned off.

\$69.95 retail

Skyles Electric Works, Inc.; 231-E S. Whisman Rd.; Mountain View, Calif. 94041; 800-227-9998 or 415-965-1735

D.A.S. Disk Editor

Utility

A utility program that allows a user to change any byte(s) on a disk and display sectors in Hex, Octal, ASCII and Decimal format.

\$20 retail

Developers of Advanced Software; 12455 Veterans Memorial Dr., Ste. 204; Houston, Texas 77014

Deluxe Print

Color printing program

Contains 15 formats for creating a variety of customized printouts, in either color or black and white.

\$99.95 retail

Electronic Arts; 1820 Gateway Dr.; San Mateo, Calif. 94404; 415-571-7171

Disk Library

Provides a way to organize the contents of a disk for easy access.

\$49.95 retail

Classic Image, Inc.; 510 Rhode Island Ave.; Cherry Hill, N.J. 08002; 609-667-2526

Disk Traffic Controller

File/drawer/disk database

Computer Food, Inc.; 2215 Sarah Ct., Ste. 80H; Norcross, Ga. 30093; 404-851-9103

Diskwik

Disk utility package

Gives a user total access and control of his disks. Features include restoring deleted files; eliminating any errors on a disk (except those due to defective disks); editing in hex or ASCII; copying blocks to the same or another disk; reformatting tracks; correcting checksums; and more.

\$49.95 retail

Tigress; PO Box 665; Glendora, Calif. 91740; 818-334-0709

■DOS-2-DOS

File transfer

DOS-2-DOS transfers all file types from MS-DOS/PC-DOS to AmigaDOS and vice versa.

Features include selection of a desired MS-DOS/PC-DOS subdirectory, displays a sorted directory listing of a current subdirectory with disk-usage statistics, supports full directory path names, provides duplicate file-name detection with query/replace options permits renaming of files where file-name restrictions occur, offers type and delete commands and remains resident to permit AmigaDOS disk swapping.

\$55 retail

Central Coast Software; 268 Bowie Dr.; Los Osos, Calif. 93402; 805-528-4906

InfoMinder

Information resource

An information resource program that allows a user to access stored data.

The program consists of three parts: an access/display program, a text compiler and a programmer's interface.

\$89.95 retail

Byte By Byte; Arboretum Plaza II; 9442 Capital of Texas Hwy. N., Ste. 150; Austin, Texas 78759; 512-343-4357

■LaserUp! Graphics

Printer utility

Laserup! Graphics allows a user to print virtually any Amiga screen on an Apple Laserwriter printer.

The program allows a user to load and display any IFF-formatted picture, and print all or any portion of it at any scale and at any place on a page.

A user has complete control of halftone screen types, independent X and Y scaling and positioning on the page.

All files are saved as Postscript images.

\$79.95 retail

S. Anthony Studios; 889 De Haro St.; San Francisco, Calif. 94107; 415-826-6193

LaserUtilities Vol. 1

A collection of *Postscript* procedures for formatting text on the Laserwriter.

\$39.95 retail

S. Anthony Studios; 889 De Haro St.; San Francisco, Calif. 94107; 415-826-6193

Hire Tech- knowledgy



Redgate

Communications

Corporation

Marketing
Communications
and Publishing

Past and present clients include Apple Computer, Inc., Bio Medic Data Systems, Commodore, COMPAQ Computer Corporation, Contel Business Networks, Eastman Kodak, Harris Corporation, Hewlett-Packard, MICAH, Motorola Information Systems, OmniGate, Private Satellite Network, Texas Instruments, Wang Laboratories, Warner Communications and Xerox. For more information, contact Ted Leonsis, founder and president,

Redgate Communications Corporation

3381 Ocean Drive, Vero Beach, Florida 32963, 305-231-6904

Boston Office: 401 West Street, Reading Massachusetts 01867, 617-944-9897

San Francisco Office: One China Basin Building, Suite 6300, 185 Berry Street, San Francisco, California 94107, 415-777-3911

Utilities Continued

■ lpr

Line-printing spooler

Similar to the UNIX line-printing spooler utility, *lpr* outputs files to a user-defined port.

A configuration file allows the user to tell the utility about print parameters such as pagination and page headers. Command-line arguments may also be used to override or add other information to the output.

Available January, 1987; \$59.95 estimated retail

Meta-Soft, Inc.; PO Box 7293; Las Cruces, N.M. 88006; 505-523-0371

Maxipower Series

Utilities

Maximizer is a mouse/keyboard record and playback program.

Maxicache is a floppy disk performance enhancement that allows a floppy to work faster than a hard disk.

Maxikey is an abbreviation handler for word processing and programming.

Maxishare is a real-time data sharing program using two Amigas.

\$29.95 each retail

MaxiSoft; 2817 Sloat Rd.; Pebble Beach, Calif. 93953; 408-625-4104 or 800-942-6294

The On-line AmigaBASIC Manual

On-line help utility

An on-line help utility program that includes pull-down menus for help on all the BASIC instructions.

Available January, 1987; \$29.95 retail; not copy-protected

Omega Star Software; PO Box 1831; Clemson, S.C. 29633; 803-882-3602

Pick Your Preferences

Start-up file

An auto-running start-up file that presents a user with a menu that lists the available preference settings on a disk.

\$29.95 retail

MicroMaster Software; 1289 Brodhead Rd.; Monaca, Pa. 15061; 412-775-3000

RAM Disk

Memory partitioning utility

Gives high-speed capabilities to users of the Workbench interface.

The Micro Forge; 398 Grant St. SE; Atlanta, Ga. 30312; 404-688-9464

T-Util

File recovery

Consists of four programs: *Recover-All*, *Recover-Deleted*, *Un-Kill* and *Diskedit*. These files are designed to run from the CLI environment, and instructions are provided in the manual for users who are not familiar with CLI.

\$49.95 retail

Techni Soft; PO Box 7175; 5505 Walden Meadows Dr.; Murray, Utah 84123; 801-268-4961

■ VLI

Operating shell

VLI is an operating shell that is a cross between the Workbench and CLI.

All *CLI* commands are available with the use of the mouse. Files in the current directory are displayed and can be selected for any *CLI* operation.

Available fourth quarter, 1986

Computer Food, Inc.; 2215 Sarah Ct., Ste. 80H; Norcross, Ga. 30093; 404-851-9103

■ ZING!

Productivity software

Zing! allows a user to bypass typing cryptic commands through CLI. With the program, a user can copy, edit, delete, rename, sort, search and organize files and programs using the mouse.

Screens can be saved to standard IFF files or to a printer. A user can monitor and control running tasks and interface with other software applications.

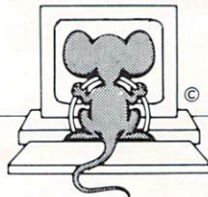
Other features include a built-in screen dimmer during periods of inactivity.

Zing! does not sacrifice memory, disk space or prevent a user from running other applications simultaneously.

\$79.95 retail

Meridian Software, Inc.; PO Box 890408; Houston, Texas 77289; 713-488-2144

Mouse Driven



Classic games software you can drive with your mouse! But, you don't need a license - just an AMIGA and:

Games Gallery I, II, and III.

Each of these packages contain exciting: **Space, Gambling, Sports Games, and Mind Teasers.**

Each provides a standard series of features and options for:

•Speech •Graphics •Menus
•Color •Help •Voice and •Mouse Control!

Kickstart 1.1 & 512K memory required.
\$29.95/ea. + \$3.00 shipping & handling.

(713) 488-2144

AMIGA is a registered trademark of Commodore-AMIGA, Inc.
Workbench and Intuition are trademarks of Commodore-AMIGA, Inc.

MSI MERIDIAN™
SOFTWARE
INC.

P.O. Box 890408, Dept. ABG
Houston, TX 77289-0408

Credit cards and
dealer inquiries welcome

ZING! is a trademark of Meridian Software, Inc.

ZING!™ is a super software package that gives YOU the power to access your AMIGA! You no longer have to resort to typing cryptic commands through CLI. ZING! uses Intuition which provides you with easy window, icon, menu, and mouse controlled features.

Start flying through your system while copying, editing, deleting, renaming, sorting, searching and organizing files and programs. You can save screens to standard IFF files or the printer, monitor and control running tasks, and interface with other software applications. Of course, ZING! has many other powers including a built-in screen dimmer during periods of inactivity.

ZING! offers these capabilities without sacrificing memory, disk space, or preventing you from running other applications simultaneously. ZING! uses Intuition the way it should be used!

Order ZING! and transform your mild mannered CLI into the fastest and most powerful computer interface ever conceived! It's available now for the **special introductory price of \$79.95 plus \$3.00** for shipping and handling.

Word Processing

E.T. Writer

Turns an Amiga computer and printer into a full-featured electronic typewriter or standard word processor.

Available first quarter, 1987; \$49.95 retail
T.R. Software; 4346 W. Maypole; Chicago, Ill. 60624; 312-875-9760

Flow

Idea processor

A tool that assists in creating sales reports, school papers and novels; helps plan business strategies and schedule appointments; and organizes thoughts and ideas.

\$99.95 retail

New Horizons Software, Inc.; PO Box 43167; Austin, Texas 78745; 512-280-0319

■ Illusion Fonts #1

System fonts and utilities

Illusion Fonts #1 is a library of system utilities and accessories that contains a set of various fonts and font-handling utilities.

Features include 10 complete custom-made, high-quality fonts including serif, sans serif and decorative fonts; multiple font sizes from eight to 21 points; and a font-mover utility. The program is not copy-protected.

Illusion Fonts #1 is compatible with *Deluxe Paint*, *Deluxe Video*, *Notepad* and other programs conforming to Amiga font standards.

\$24.95 retail

Illusion Software; 6546 Hollywood Blvd., Ste. 201; Hollywood, Calif. 90028; 213-464-8381

LaserFonts Vol. 1

A collection of three downloadable analytic (not bit-mapped) fonts for the Laserwriter printer.

\$39.95 retail

S. Anthony Studios; 889 De Haro St.; San Francisco, Calif. 94107; 415-826-6193

Nancy

Spelling checker and utilities

A spelling checker with a compressed dictionary file containing more than 80,000 words. It can search up to four user-supplied word lists of unlimited length which can, for example, hold names and technical words.

\$60 retail

The Computer Club; 4843A S. 28th St.; Arlington, Va. 22206; 703-998-7588

■ ProWrite

Word processor

Prowrite is a word processor that allows a user to edit and print in different fonts, styles and colors.

Prowrite supports all printers that have Amiga printer drivers. Only graphics-capable printers can print in the font used

on screen, however, and only color-capable printers can utilize the program's color-printing capabilities.

Multitasking is fully supported.
Available January, 1987; \$124.95 retail
New Horizons Software, Inc.; PO Box 43167; Austin, Texas 78745; 512-280-0319

Scribble!

Word processor

A full-featured word processor that contains a 40,000-word spelling checker, basic word processing capabilities and advanced features.

\$99.95 retail

Micro-Systems Software, Inc.; 4301-18 Oak Cir.; Boca Raton, Fla. 33431; 305-391-5077 or 800-327-8724

Talker

Talking word processor

An easy-to-use word processor that speaks as a user types. It includes all standard word processor features such as word wrap, margin setting, bold, italic and underlined text.

\$69.96 retail

Finally Software; 4000 MacArthur Blvd., Ste. 3000; Newport Beach, Calif. 92663; 714-854-4434

Textcraft

Word processing

An entry-level word processor that stresses ease of use, on-screen documentation and templates for business letters, memos, etc.

\$99.95 retail

Commodore Business Machines, Inc.; 1200 Wilson Dr.; West Chester, Pa. 19380; 215-431-9180

■ Thunder! The Writer's Assistant

Word processing

Thunder! contains three timesaving accessories that work within application programs to increase productivity: Spelling Checker, Abbreviations Expander and Document Analyzer.

The Spelling Checker contains a 50,000-word dictionary, works in real-time mode to instantly identify errors as a user types and more.

The Abbreviations Expander saves a user time entering commonly used items.

The Document Analyzer displays a statistical report, including number of words, average sentence length and more.

\$39.95 retail

Batteries Included; 30 Mural St.; Richmond Hill, Ontario, Canada L4B 1B5; 416-881-9816

Wordwright

Word processing

A word processor that can handle large text files and is oriented to the user who wants total control over the way text is printed.

\$75 retail

RTL Programming Aids; 10844 Deerwood SE; Lowell, Mich. 49331; 616-897-5672

Write Hand

Word processor

A full-featured word processor that includes extensive on-line help, form letter generation, mail merge, automatic document backup, time/date stamp, conditional page breaks, custom printer configuration, block graphics, viewing of multiple documents during edit and more.

\$50 retail

Byte By Byte; Arboretum Plaza II; 9442 Capital of Texas Hwy. N., Ste. 150; Austin, Texas 78759; 512-343-4357

Zuma Fonts

Video; presentation graphics

Designed for use in video and presentation graphics applications. Each of the volumes contains font sizes ranging from 20 to 100 points for screen resolutions of 320 x 200, 640 x 200 and 640 x 400.

\$34.95 per volume retail

Brown-Wagh Publishing; 16795 Lark Ave., Ste. 210; Los Gatos, Calif. 95030; 408-395-3838

Personal And Home Software

Education

■ Analogies I And II

\$65 each retail

Intellectual Software, a division of Queue, Inc.; 562 Boston Ave.; Bridgeport, Conn. 06610; 800-232-2224

■ Comprehensive Grammar Review I And II

\$54.95 each retail

Intellectual Software, a division of Queue, Inc.; 562 Boston Ave.; Bridgeport, Conn. 06610; 800-232-2224

■ Conversation With A Computer

Logic games and Amiga Basic programming guide

\$29.50 retail

Jenday Software; PO Box 4313; Garden Grove, Calif. 92642; 714-636-3378

Discovery

Interactive educational space adventure

Through the mastering of mathematical and spelling challenges a user explores and repairs the inner workings of the spaceship *Discovery*.

\$39.95 retail

MicroIllusions; PO Box 3475; Granada Hills, Calif. 91344; 818-360-3715

■ Equation Plotter

Educational aid

Equation Plotter is designed to be used as an educational aid by junior high, high

Personal And Home Software

Education Continued

school and even advanced college students.

Classroom teachers can also benefit from the program's ability to let them draw graphs in the X and Y plane, compare mathematical functions, find solutions of equations graphically, locate maxima and minima of functions and more.

Equation Plotter accepts user-defined mathematical functions, or a user can select from a generalized library of equation types.

A user can optionally decide to view one or two curves, the latter enabling detailed comparisons of equation types. Additional options turn grid lines on or off and will repeat the current display, with a change of scale in either or both the X or Y axes. \$29.95 retail
Scientific Software; PO Box 202; Rexford, N.Y. 12148

■ First Shapes

Basic geometric shapes

First Shapes teaches young children, ages three to eight, beginning concepts about shape and form through a talking friend, Ted E. Bear. It helps to increase a child's readiness for mathematics, reading, writing and problem solving.

Learning modules include Shapes, which teaches five basic shapes; The Toy Factory,

which allows a child to build toys with shapes; The Toy Boxes, to store created toys; The Toy Fair, which teaches shape recognition; and Make-a-Match, which matches shapes and toys.

\$49.95 retail

First Byte, Inc.; 2845 Temple Ave.; Long Beach, Calif. 90806; 213-595-7006

French And Spanish Grammar

\$34.95 each retail; *French Grammar I, Spanish Grammar I, II, III*

Intellectual Software, a division of Queue, Inc.; 562 Boston Ave.; Bridgeport, Conn. 06610; 800-232-2224

Geography

\$59.95 each retail; *U.S. Geography Adventure, World Geography Adventure I, II, III, IV*

Intellectual Software, a division of Queue, Inc.; 562 Boston Ave.; Bridgeport, Conn. 06610; 800-232-2224

The Halley Project: A Mission In Our Solar System

Mindscape, Inc., see review on page 71

History

\$59.95 each retail; *American History Adventure, How A Bill Becomes A Law, World History Adventure*

Intellectual Software, a division of Queue, Inc.; 562 Boston Ave.; Bridgeport, Conn. 06610; 800-232-2224

Keyboard Cadet

Typing instruction

\$39.95 retail

Mindscape, Inc.; 3444 Dundee Rd.; Northbrook, Ill. 60062; 800-221-9884 or 800-942-7315 in Ill.

KidTalk

Reading, writing instruction

An educational program with built-in speech capabilities that can help children in preschool through sixth grade improve their reading and writing.

\$59.95 retail

First Byte, Inc.; 2845 Temple Ave.; Long Beach, Calif. 90806; 213-595-7006

Lessons In Reading And Reasoning

\$39.95 each retail; *Lessons I, II, III*

\$59.95 retail; *Lesson IV*

\$149.95 retail; Entire package

Intellectual Software, a division of Queue, Inc.; 562 Boston Ave.; Bridgeport, Conn. 06610; 800-232-2224

MasterType

Typing tutor

\$39.95 retail

Scarborough Systems, Inc.; 55 S. Broadway; Tarrytown, N.Y. 10591; 914-332-4545

■ MathTalk

Mathematics

Mathtalk is a mathematics learning tool

Even the Masters would be Amazed.



EASYL™

PRESSURE SENSITIVE DRAWING PAD FOR THE AMIGA™ PERSONAL COMPUTER.

FOR USE BY AD AND FILM DESIGNERS, ANIMATORS, ARTISTS AND STUDENTS. WORKS WITH ALL AMIGA GRAPHIC AND CAD SOFTWARE. EASYL™ BY ANAKIN RESEARCH, INC., 100 WESTMORE DR., UNIT 11C, REXDALE, ONTARIO, CANADA, M9V 5C3, (416) 744-4246
— DEALER INQUIRIES WELCOME.

with built-in speech that helps increase a child's (primary through elementary grades) ability to solve basic addition, subtraction, multiplication and division problems.

Learning modules include Math Book, which allows a child to enter his own problems and receive individualized tutorial help; Whiz, which keeps children in control, letting them move at their own pace; Scores, which keeps a record of each child's test and game scores; Tabletalk, which teaches math tables; and Mystery Number, which allows a child to solve simple math equations with missing numbers. \$59.95 retail

First Byte, Inc.; 2845 Temple Ave.; Long Beach, Calif. 90806; 213-595-7006

■MicroEd Educational Programs

Microed, Inc. offers a series of educational programs that range from reading to history. All programs use the Amiga voice. \$29.95 each retail; *Beginning Reading One* through *Four*

\$29.95 each retail; *Spelling Level Two* through *Six*

\$29.95 each retail; *Capitalization, Punctuation*

\$29.95 retail; *Social Studies Vocabulary* (elementary)

\$49.95 retail; *Vocabulary Series* (high school level)

\$29.95 retail; *Basic Grammar*

\$29.95 retail; *Word Demons*

\$39.95 retail; *The Spelling Detective Game*

\$89.95 retail; *The Lewis and Clark Expedition*

\$59.95 retail; *Across the Plains*

\$79.95 retail; *Fur Trade of the Great Lakes*

\$79.95 retail; *Making Our Constitution*

MicroEd, Inc.; PO Box 444005; Eden Prairie, Minn. 55344; 612-944-8750

Paraclete

Music aid

\$89.95 retail

Associated Computer Services; 1306 E.

Sunshine; Springfield, Mo. 65804;

417-887-7373

Practical Composition And Sentence Completion

\$44.95 retail; *Practical Composition I: Making Words Work*

\$54.95 retail; *Practical Composition II: Logical, Clear Sentences*

\$44.95 retail; *Practical Composition III: Selecting The Best Approach*

\$44.95 retail; *Practical Composition IV: Making Sentences Work*

\$44.95 retail; *Practical Composition V: Using Words Correctly*

\$144.95 retail; *Practical Composition Package I*; includes *Practical Composition I, II and III*

\$85 retail; *Practical Composition Package II*; includes *Practical Composition IV and V*

\$44.95 retail; *Sentence Completion*

Intellectual Software, a division of Queue, Inc.; 562 Boston Ave.; Bridgeport, Conn.

06610; 800-232-2224

Reading

\$65 retail; *College Aptitude Reading Comprehension Exercises*

\$39.95 retail; *Reading Adventure I*

\$59.95 each retail; *Reading Adventure II, III*

\$54.95 each retail; *Reading and Thinking I, II, III*

Intellectual Software, a division of Queue, Inc.; 562 Boston Ave.; Bridgeport, Conn. 06610; 800-232-2224

■Senior Tutor

Conversational Spanish tutor

Senior Tutor is a program that speaks and teaches Spanish.

Lessons include greetings and phrases, around the house, a trip to the market, finding your way around and more.

Lessons change so that a user never sees the same one twice, and variable quizzes help monitor progress.

\$69.96 retail

Finally Software; 4000 MacArthur Blvd., Ste. 3000; Newport Beach, Calif. 92663; 714-854-4434

Speller Bee

Spelling instruction

An educational program with built-in speech capabilities that can help children in preschool through sixth grade improve their spelling skills.

\$59.95 retail

First Byte, Inc.; 2845 Temple Ave.; Long Beach, Calif. 90806; 213-595-7006

Starting A New Business

Simulation game

\$59.95 retail

Intellectual Software, a division of Queue, Inc.; 562 Boston Ave.; Bridgeport, Conn. 06610; 800-232-2224

■The Surgeon

Simulation game

The Surgeon is a simulation game of a real-life operation on a disease called aortic aneurysm.

The program includes all of the complications that can occur in a surgical operation, such as abnormal electrocardiographic wave patterns, a drop in blood pressure and complications from incorrect procedures.

The program can be used to understand the parts of the human body, medical terminologies and surgical operations.

\$60 retail

ISM, Inc.; 2936 Paper Mill Rd.; Phoenix, Md. 21131; 301-666-2672

True BASIC Educational Software

\$49.95 each retail; *Algebra, Pre-Calculus, Calculus, Chance, Discrete Math, Trigonometry*

True BASIC, Inc.; 39 S. Main St.;

Hanover, N.H. 03755; 603-643-3882

Typing Tutor And Word Invaders

Typing instruction

\$34.95 retail

Academy Software, Inc.; PO Box 6277; San Rafael, Calif. 94903; 415-499-0850

Unicorn Educational Software

\$49.95 each retail; *Decimal Dungeon, Fraction Action, Math Wizard, Animal Kingdom, Read and Rhyme, Kinderama*

Unicorn Software Co.; 2950 E. Flamingo Rd.; Las Vegas, Nev. 89121; 702-737-8862

Vocabulary

\$34.95 retail; *Antonyms*

\$54.95 retail; *Practical Vocabulary*

\$59.95 each retail; *Vocabulary Adventure I, II, III*

\$39.95 retail; *How To Spell*

Intellectual Software, a division of Queue, Inc.; 562 Boston Ave.; Bridgeport, Conn. 06610; 800-232-2224

Games And Entertainment

Activision Games

\$44.95 each retail; *Hacker, Hacker II: The Doomsday Papers, Mindshadow, Borrowed Time, Shanghai, Tass Times in Tonetown*

\$49.95 retail; *The Activision Little Computer People Discovery Kit*

Activision, Inc.; PO Box 7286; Mountain View, Calif. 94039; 415-960-0410

■Aldaron

Reversi board game

\$39.95 retail

Microsmiths, Inc.; PO Box 561; Cambridge, Mass. 02140; 617-576-2878

■Arazok's Tomb

Adventure, role-playing game

\$49.95 retail

Aegis Development, Inc.; 2210 Wilshire Blvd., Ste. 277; Santa Monica, Calif. 90403; 213-392-9972

Bowling

Action game

\$19.95 retail

Sterling Software; 77 Mead St.; Bridgeport, Conn. 06610; 203-366-7775

■Chess & Checkers

Strategy games

\$39.95 retail

Point Software Development, Inc.; PO Box 1946; Huntsville, Ala. 35807; 205-350-5511

Chessmate 1.1

Computerized chess game

\$29.95 retail

Dark Horse; 3117 Freeman Mill Rd.; Greensboro, N.C. 27406; 919-292-3979

■The Chessmaster 2000; Software Golden Oldies Volume 1

Strategy; entertainment

\$44.95 retail; *The Chessmaster 2000*

\$34.95 retail; *Software Golden Oldies Volume 1*

The Software Toolworks; 9713 Santa Monica Blvd., Ste. 204; Beverly Hills, Calif. 90210; 213-278-8450

Personal And Home Software

Games And Entertainment Continued

■ Computer Baseball

Sports game
\$39.95 retail
Strategic Simulations, Inc.; 1046 N. Rengstorff Ave.; Mountain View, Calif. 94043; 415-964-1200

Diablo

Maze-like, arcade-style game
\$29.95 retail
Classic Image, Inc.; 510 Rhode Island Ave.; Cherry Hill, N.J. 08002; 609-667-2526

Dr. Xes

Psychotherapeutic game
\$49.96 retail
Finally Software; 4000 MacArthur Blvd., Ste. 3000; Newport Beach, Calif. 92663; 714-854-4434

Electronic Arts Games

\$39.95 each retail; *Archon, Dr. J and Larry Bird Go One-On-One, Skyfox, Arcticfox, Return To Atlantis*
\$49.95 retail; *Adventure Construction Set*
Electronic Arts; 1820 Gateway Dr.; San Mateo, Calif. 94404; 415-571-7171

■ Epyx Games

Strategy
Temple of Apschai Trilogy, Rogue, Winter Games

Epyx, Inc.; 1043 Kiel Ct.; Sunnyvale, Calif. 94089; 408-745-0700

■ The Faery Tale Adventure

Adventure game
\$49.95 retail
MicroIllusions; PO Box 3475; Granada Hills, Calif. 91344; 818-360-3715

■ Flight Simulator II

\$49.95 retail
Sublogic Corp.; 713 Edgebrook Dr.; Champaign, Ill. 61820; 217-359-8482

■ Games Gallery I, II And III

Classic computer games
\$29.95 each retail
Meridian Software, Inc.; PO Box 890408; Houston, Texas 77289; 713-488-2144

Gamestar Games

Sport simulations
\$54.95 retail; *Championship Golf: The Great Courses Of The World, Vol. I Pebble Beach*
\$44.95 each retail; *GFL Championship Football, Championship Baseball, GBA Basketball: Two On Two*
Gamestar; PO Box 7286; Mountain View, Calif. 94039; 800-227-9759 or 415-940-6044

GRIDIRON!

GRIDIRON! NFL DataDisk
Football simulation
\$69.95 retail; *GRIDIRON!*
Available fall, 1986; *NFL Datadisk*

Bethesda Softworks; 9208 Burning Tree Rd.; Bethesda, Md. 20817; 301-469-7061 or 800-992-4009

HC Software Australia Games

\$38 each retail; *Cosmos, Napoleonic G.A.P., Land G.A.P.*
HC Software Australia; GPO Box 2204; Adelaide, South Australia 5001; 08-428377

Infocom Games

\$49.95 each retail; *Starcross, Suspended, Spellbreaker, Deadline*
\$39.95 each retail; *Planetfall, The Hitchhiker's Guide To The Galaxy, A Mind Forever Voyaging, Seastalker, Cutthroats, Wishbringer, Zork I, Enchanter, The Witness, Ballyhoo, Suspect, Trinity, Leather Goddesses Of Phobos*
\$44.95 each retail; *Infidel, Zork II, Zork III, Sorcerer*
Infocom; 125 CambridgePark Dr.; Cambridge, Mass. 02140; 617-492-6000

Leader Board

Golf simulation
\$39.95 retail
Access Software; 2561 South 1560 West; Woods Cross, Utah 84087; 801-298-9077

Mindscape Games

\$49.95 each retail; *Deja Vu: A Nightmare Comes True, Brataccas, Balance Of Power*
\$44.95 retail; *Racter*
Mindscape, Inc.; 3444 Dundee Rd.; Northbrook, Ill. 60062; 800-221-9884 or 800-942-7315 in Ill.

Read/Write MS-DOS Disks on your Amiga



DOS-2-DOS does what you thought Transformer would do. **DOS-2-DOS** transfers files between PC/MS-DOS & Amiga-DOS!

- Supports single or double sided 5 1/4" diskettes
- Allows selection of desired PC/MS-DOS subdirectory
- Supports full directory path names, with wild cards in file names
- Provides duplicate file name detection with query replace options
- Provides TYPE and DELETE commands
- Permits Amiga-DOS disk swapping

Requires standard Amiga with external 5 1/4" expansion disk drive and a formatted PC/MS-DOS diskette. Only \$55 plus \$3 shipping and handling. CA residents add sales tax.



 **Central Coast Software** 

268 Bowie Drive, Los Osos, CA 93402 • 805 / 528-4906

Dealer Inquiries Invited Telephone Orders Welcome

TRADEMARKS: Amiga, Amiga-DOS, Transformer, Commodore-Amiga, Inc. PC-DOS, IBM, MS-DOS, Microsoft, DOS-2-DOS, Central Coast Software.

For Free Information From Our Advertisers

Next to each advertiser's name below is its reader service number. Circle the appropriate number, cut out this form and mail to Redgate Communications, 3381 Ocean Dr., Vero Beach, FL 32963-9989, Attn: Circulation Dept.

Advertiser	Reader Service Number	Page Number
Access Associates	1	67
Aegis Development Inc.	2	69
Aegis Development Inc.	3	112
Anakin Research, Inc.	4	104
Applied Visions	5	111
Central Coast Software	6	106
Classic Image/MW Ruth	7	81
Computer Best	8	95
Comspec Communications	9	91
Dark Horse Company	10	81
Digital Creations	11	93
Disk Man, The	12	85
Finally Software	13	79
Lattice, Inc.	14	87
Megatronics	15	99
Meridian Software	16	102LH
Meridian Software	17	102RH
Microillusions	18	77
MicroSoft Press	19	73
Softwood Company	20	66
Transtime Tech.	21	72

Seven Cities Of Gold

Electronic Arts, see review on page 76

■ Super Huey

Helicopter flight simulation
\$39.95 retail

COSMI; 415 N. Figueroa St.; Wilmington, Calif. 90744; 213-835-9687

■ Video Vegas

Slots, blackjack, draw poker, keno
\$34.95 retail

Baudville; 1001 Mich. 49506; 616-957-3036 or 800-824-8873

Personal And Home Finance

2+2

Home management system

A home management system that features an integrated database to help organize financial transactions and daily activities for the home and small businesses.

\$99 retail

Olamic Systems Corp.; 141 W. Jackson Blvd.; Chicago, Ill. 60604; 312-786-1410

■ Commodity Futures Real-Time Tic Charts

Commodity quotations

This package, in conjunction with the Market Monitor satellite decoder from Bonneville Telecommunications, allows a user to plot in real time the tic-by-tic quote information from the commodity exchanges.

Bonneville's full-service information includes commodity quotations, information and news.

A user can plot as many as 80 commodities at a time from a selection of more than 200 carried on the Market Monitor. Charts can be printed at any time.

\$795 retail

Ensign Software; 7337 Northview; Boise, Idaho 83704; 208-378-8086

D.A.S. Home Finance

Assists the homeowner in making financial decisions and in planning for future investments.

\$30 retail

Developers of Advanced Software; 12455 Veterans Memorial Dr., Ste. 204; Houston, Texas 77014

Financial Cookbook

Financial analysis

The program offers 32 financial calculation "recipes" that contain formulas that produce answers about taxes, investments,

savings, mortgages, IRAs and other personal finance questions.

\$49.95 retail

Electronic Arts; 1820 Gateway Dr.; San Mateo, Calif. 94404; 415-571-7171

Financial Planner

A what-if planning tool for all common financial transactions with amortizations. All math, rows and columns are built in.

\$100 retail; without ABasiC

\$110 retail; with ABasiC

Gander Software, Ltd.; 3223 Bross Rd., "The Ponds"; Hastings, Mich. 49058; 616-945-2821

Home I, Real I

PAR financial software

PAR Home I enables a home user to get a handle on major areas of personal financial management. \$69 retail

PAR Real I assists a realtor or investor with several property financial management areas. \$149 retail

PAR Software, Inc.; PO Box 1089; Vancouver, Wash. 98666; 206-695-1368 or 800-433-8433

■ Isgur Portfolio System

Investment decisions

The *Portfolio System* provides instant updates and powerful analytical features to help investors and full-time counselors make profitable investment decisions.

The program updates portfolios with the latest data from on-line services; includes the *I*S* telecommunications program; allows new ways to compile, structure and display portfolio data; contains a memo function that advises a user of important upcoming dates; includes a replay mode that records every move a user makes, providing a virtual turnkey system; and more.

Analytical features include Raise Money, Splits/Dividends, Cash and Margins, Suppose and more.

\$199.95 U.S. retail; \$269.95 Canada retail
Batteries Included; 30 Mural St.; Richmond Hill, Ontario, Canada L4B 1B5; 416-881-9816

■ Money Mentor

Personal finance

Money Mentor is a financial accounting system that manages up to 30 separate accounts, keeps track of transactions, computes balances, projects and budgets expenses and alerts a user when a balance or budget has been exceeded.

The program produces comprehensive financial reports in both tabular and graphic form and summarizes account and item transactions, including actuals, budgeted values and variances. It also detects and reports problems resulting from discrepancies in budgeted payments.

Smart scrolls, a feature based on artificial-intelligence techniques, recognizes frequent transactions. This means *Money Mentor* can complete the logging of new

entries based on recalled information. If the recalled information and new-entry data are the same, the user need not enter anything. The user can, however, overwrite any information he wants changed.

The program utilizes the Amiga's sound, voice, color graphics and mouse input capabilities.

\$95.95 retail

Sedona Software; 11844 Rancho Bernardo Rd., Ste. 20; San Diego, Calif. 92127; 619-451-0151

PHASAR

Home/small-business management system

PHASAR (Professional/Home Accounting System And Register) is a financial management system that allows up to 40 bank/charge accounts and 130 income/expense categories.

\$89.95 retail

Marksmen Technology, Inc.; Rt. 5, Box 221A; Santa Fe, N.M. 87501; 505-455-2681 or 800-334-7792

■ Trendrider

Talking investor's tool

Trendrider is a program that uses a time-proven method of tracking fluctuations in the mutual-funds market.

The program uses artificial-intelligence techniques and speech synthesis in explaining its investment trend information.

\$99.96 retail

Finally Software; 4000 MacArthur Blvd., Ste. 3000; Newport Beach, Calif. 92663; 714-854-4434

Other Software

■ Eye Play 1

Graphic routines

A collection of graphic routines that are randomly generated for a kaleidoscope-like visual effect.

Each program is 40K large, written in C and has 40 routines.

\$19.95 retail

Sterling Software; 77 Mead St.; Bridgeport, Conn. 06610; 203-366-7775

■ Jumpdisk

Magazine on disk

Jumpdisk is a monthly magazine on disk that contains at least 10 programs and 10 articles. Each issue includes product news and reviews, and reader submissions of programs and articles are invited.

\$7 retail; one month

\$18 retail; three months

\$34 retail; six months

\$60 retail; one year

Jumpdisk; 1493 Mt. View Ave.; Chico, Calif. 95926; 916-343-7658

Publications

■ The Amigan Apprentice & Journeyman

Reference journal
\$24 retail U.S.; one year
\$34 retail overseas; one year
The Amigans; PO Box 411; Hatteras, N.C.
27943; 919-986-2443

Hardware And Peripherals

256K Memory Expansion

\$119.95 retail
Skyles Electric Works, Inc.; 231-E S.
Whisman Rd.; Mountain View, Calif.
94041; 800-227-9998 or 415-965-1735

256K Memory Expansion

\$115 retail
Starpoint Software; 122 S. Broadway;
Yreka, Calif. 96097; 916-842-6183

■ 68881 Floating Point Coprocessor Board

Math coprocessor board

This add-on math coprocessor board features a Motorola 68881 chip and 68010 microprocessor and, according to its vendor, increases the processing speed of math-oriented software by as much as 500 percent.

Software included with every board consists of a *Coprocessor Interface Emulator*; *Lattice C.*; offering direct-replacement, double-precision IEEE-format math libraries; *Aztec C68K*; preliminary floating-point libraries; and an *Assembler*, which enables encoding of 68881 mnemonics using Amiga or Aztec assemblers.

\$149 retail; bare board
\$269 retail; without 68881
\$459 retail; with 68881
Netch Computer Products; PO Box 645;
Monrovia, Calif. 91016; 818-334-1002

ADC-1 Data Acquisition And Control System

Measurement; monitoring hardware

An RS-232 peripheral product that combines analog and digital inputs with hard-wired, controlled outputs and a transmitter \$449 retail; standard model
Remote Measurement Systems, Inc.; 2633 Eastlake Ave. E, Ste. 200; Seattle, Wash.
98102; 206-328-2255

Alegra

Memory-expansion unit

The Alegra allows a user to add 512K bytes of external memory to an Amiga. It features a 3/4-inch footprint and a no-wait-state design that lets an Amiga operate at

its intended speed. It can be upgraded to 2MB.

\$379 retail
Access Associates; 491 Aldo Ave.; Santa Clara, Calif. 95054; 408-727-8520

Amiga Expansion Box

\$995 retail; Expansion box, 8 expansion slots, 512K bytes of expansion fast memory (with sockets for 8MB), battery backed-up real-time clock, DMA SCSI hard disk interface, power supply
\$1,995 retail; Above plus 8MB of memory
The Gemstone Group; 620 Indian Spring Ln.; Buffalo Grove, Ill 60089;
312-537-7405

Aprotek Printers

Daisy wheel and dot matrix printers
\$279.95 retail; Aprotek Daisy 1120
\$189.95 retail; Seikosha SP-1000A
Aprotek; 1071-A Avenida Acaso; Camarillo, Calif. 93010; 805-987-2454

■ ASDG Multifunction Boards; Card Racks

The Convertible SMGC is a Zorro-compatible multifunction board that incorporates the following sections: four DMA-driven serial ports supporting synchronous and asynchronous operation, a math processor in the form of a M68881, a DMA-driven GPIB port (IEEE 488) and a clock with battery backup. The board may be purchased with any combination of sections populated or depopulated.

The Convertible .5M, 1M and 2M are Zorro-compatible RAM boards that are fully auto-configuring. Memory access takes place at full processor speed. \$450 retail, .5MB; \$650 retail, 1MB; \$900 retail, 2MB

The Mini-Rack-B is a Zorro-compatible two-slot card rack that contains a 6-amp power supply. \$300 retail

The Mini-Rack is a Zorro-compatible three-slot card rack that contains a 9-amp power supply. \$500 retail
ASDG, Inc.; 280 River Rd., Ste. 54A; Piscataway, N.J. 08854; 201-540-9670

■ AX2000

2MB RAM board

The AX2000 adds 2MB of RAM to the Amiga. The board uses standard memory bus architecture to ensure compatibility with all standard peripherals.

It fits onto the expansion port on an Amiga and duplicates the port, so a user can add other peripherals or piggyback two units for more than 4MB of RAM. The extra RAM can be used to create a RAM drive that allows a user to compile his programs quickly in memory.
\$899 U.S. retail; \$1,276.54 Canada retail
Comspec Communications, Inc.; 153 Bridgeland Ave., Unit 5; Toronto, Ontario, Canada M6A 2Y6; 416-787-0617

■ Bright-1

MIDI interface card

The Bright-1 is a MIDI interface card

that connects to an Amiga's serial port with a male-to-male cable (not supplied) and provides 5-pin connectors for MIDI In and MIDI Out.

It has two bicolor LEDs that verify proper connection and monitor activity on the musical instrument interface.

\$39.95 retail
Micro Engineering of Northern Virginia;
PO Box 11780; Alexandria, Va. 22312;
703-750-7860

The Business Partner

Hard disk drive
\$2,042.95 retail; 10MB
\$2,199.95 retail; 20MB
\$2,504.95 retail; 40MB
The Micro Forge; 398 Grant St. SE;
Atlanta, Ga. 30312; 404-688-9464

Buss Station

Features include a recessed slot; surge, spike, RFI and EMI interference; a multiport data switch; a RAM expansion port; arbitration circuit; and eight 86-pin card edge connectors.

DSI; 717 South Emporia; Wichita, Kan.
67211; 316-264-6118

■ Comspec Printer Enhancements

The Microshare MCS 6550 is a 256K printer network for an Amiga. The buffer frees up the computer during outputs to the printer by storing text and graphics in its own memory rather than the Amiga's memory. \$286 U.S. retail; \$447.95 Canada retail

The Microshare MCS 1050 is an interface that allows an Amiga to communicate with an IEEE printer, such as the Commodore MPP 1361 or the Commodore 6400. \$128 U.S. retail; \$201.54 Canada retail

The Microshare MCS 8008 is an eight-channel, 256K printer network that allows a user to connect several computers to one printer. Its built-in 256K buffer allows the MCS 8008 to accept requests for printing from more than one computer at the same time. \$714 U.S. retail; \$1,119.95 Canada retail

Comspec Communications, Inc.; 153 Bridgeland Ave., Unit 5; Toronto, Ontario, Canada M6A 2Y6; 416-787-0617

Converter+

Universal interface and buffer

Provides buffer memory for a printer and interfaces parallel-to-serial or serial-to-parallel at the flip of a switch.

\$229.95 retail; 64K
\$279.95 retail; 256K
\$329 retail; 512K
\$399 retail; 1MB
\$179.95 retail; 0K
Johnathon Freeman Designs; PO Box 880114; San Francisco, Calif. 94188;
415-822-8451

Desktop_Amp, Disk_Mate

Stereo amplifier, disk drive expansion box

Desktop_Amp is a small, stereophonic amplifier. \$44.95 retail

Disk_Mate is an add-on peripheral box that allows a user to use two or three external drives with the Amiga. \$89.95 retail (built on special order only)
Digital Systems Engineering; 6854 Blowing Wind Way; Citrus Heights, Calif. 95621; 916-725-3025

■ Digi-View Digitizer

Digi-View uses the Amiga's exclusive hold-and-modify mode and dithering techniques to display broadcast-quality color photographs.

Color resolution is made possible by a precision color-separation process that uses color filters (included) and an inexpensive black-and-white video camera to resolve 21 bits per pixel, or more than 2 million shades.

In monochrome mode, Digi-View features a resolution of up to 640 by 400 with 128 gray levels. Special image-processing software eliminates flickering and contour effects.

IFF disk format allows a user to transfer pictures to other Amiga graphic programs. \$199.95 retail; video cameras and accessories available
NewTek; 701 Jackson, Ste. B3; Topeka, Kan. 66603; 913-354-9332

Easy!

Drawing pad

A pressure-activated drawing pad that allows a user to draw directly into the Amiga with a pencil.
\$499 U.S. retail
Anakin Research, Inc.; 100 Westmore Dr., Unit 11C; Rexdale, Ontario, Canada M9V 5C3; 416-744-4246

The Executive

Expansion box

A two-slot, 100-pin auto-configuration expansion box that sits under the Amiga monitor. It is 2.8-inches high and has a pass-through for other hardware.
The Micro Forge; 398 Grant St. SE; Atlanta, Ga. 30312; 404-688-9464

■ Imajet

Ink-jet color-image printer

The Imajet ink-jet color-image printer operates at a maximum of 120 dots per inch and can produce more than 4,000 dithered colors.
\$1,495.98 retail
Illustrated Images, Inc.; PO Box 19149; Portland, Ore. 97219; 503-246-2774

IVS Busbox

Bus expansion box

A fully buffered bus expansion box with integral power supplies for the Amiga. Included are four expansion slots in a fully buffered backplane and a real-time clock.
\$349.95 retail
Interactive Video Systems; 15201 Santa Gertrudes Ave., Y-102; La Mirada, Calif. 90638; 714-739-5020

IVS Ramex-1M

RAM memory expansion board

Comes with 1MB of dynamic RAM installed and is user expandable up to 8MB.
\$299.95 retail
Interactive Video Systems; 15201 Santa Gertrudes Ave., Y-102; La Mirada, Calif. 90638; 714-739-5020

MAS-Drive 20

20MB, half-height SCSI hard disk drive
\$1,495 retail
MicroBotics, Inc.; PO Box 855115; Richardson, Texas 75085; 214-437-5330

■ MediaPhile System

Computer-controlled audio/video center

This system, which includes a Sony EVS 700U Video 8 videocassette deck, *Mediaphile 1.0* software and an interface unit, gives Amiga users access to 24 hours of digital stereo sound, four hours of video or mixed audio and video on one videocassette tape.

Users may watch television programs or video tape on their computer monitors—using Commodore Business Machines, Inc.'s optional Genlock peripheral device—and play audio and music video from the same tape.

The system's video editing features include audio dubbing in stereo and a flying erase head for professional-looking insert edits. Record, freeze-frame, slow-motion, single-frame-stepping, double-speed and high-speed-search options are selectable from a control pad on screen.
\$1,334 retail
Interactive MicroSystems; PO Box 272; Boxford, Mass. 01921; 617-887-9607

Megabytes/Amiga

Megabytes/Amiga has 1.05, 2.10, 4.19 or 8.39MB of memory on a single board, which is designed to plug directly into the right side of the Amiga or to fit into the Zorro expansion box.
\$599 retail; 1.05MB
\$899 retail; 2.10MB
\$1,499 retail; 4.19MB
\$2,799 retail; 8.39MB
Skyles Electric Works, Inc.; 231-E South Whisman Rd.; Mountain View, Calif. 94041; 800-227-9998 or 415-965-1735

The Micro Forge Hardware

Memory and hard disk expansion systems
\$656.95 retail; Seven Slot Expansion Box \$84.95 retail; One Slot Expansion Board \$1,134.95 retail, 10MB; \$1,229.95 retail, 20MB; \$1,479.95 retail, 40MB; Basic Hard Disk System
\$755.95 retail, 10MB; \$849.95 retail, 20MB; \$1,099.95 retail, 40MB; Second Hard Drive Kit
\$1,507.70 retail, 10MB; \$1,582.70 retail, 20MB; \$1,850.45 retail, 40MB; Standard Single Drive System
The Micro Forge; 398 Grant St. SE; Atlanta, Ga. 30312; 404-688-9464

MIDI For Amiga

Standard MIDI IN, two MIDI OUTs and MIDI THRU interface
\$59.95 retail
Skyles Electric Works, Inc.; 231-E South Whisman Rd.; Mountain View, Calif. 94041; 800-227-9998 or 415-965-1735

■ MIDI GOLD

MIDI interface

MIDI Gold is a MIDI interface that connects directly to the serial port of an Amiga. It features dual MIDI-Out and single MIDI-In connections and a Sync-Out connection that provides a clock and start/stop control for drum machines and other devices.

MIDI Gold comes with a custom metal enclosure and an interface cable.
\$79 retail
Golden Hawk Technology; 427-3 Amherst St., Ste. 389; Nashua, N.H. 03063; 603-882-7198

Model RM-2 Sync Generator And Genlock Subsystem

Designed for professional use of the Amiga in recording studios and broadcast applications.
\$2,500 retail; RM-2
\$300 retail; Keyer module (if required)
Burklund & Associates; 3903 Carolyn Ave.; Fairfax, Va. 22031; 703-273-5663

MTA Series 1000

Optical computer components

Series 1000 components will convert an Amiga to an interactive laserdisc terminal. Available Winter, 1986; dependent on Genlock System
Media Technology Associates; 9208 Burning Tree Rd.; Bethesda, Md. 20817; 301-469-7060

Multiport Controller

Multiport asynchronous RS-232C/RS-422 port controller

The basic system consists of one DCE and one DTE port factory preset at 9600 baud, 32K bytes of RAM expandable to 192K bytes in 32K increments, resident FORTH or BASIC control language available on host Port 1, resident setup menu invoked by embedded control characters and non-volatile memory storage of port setups (EEPROM).
\$877 retail

Component Systems, Inc.; 778-A Brannan St.; San Francisco, Calif. 94103; 415-861-1345

Okimate 20

Color printer

A ribbon-transfer color printer that allows users to print thousands of shades of color to create pictures and graphics.
\$268 retail; printer and Plug 'N Print kit
Okidata; 532 Fellowship Rd.; Mount Laurel, N.J. 08054; 800-654-3282 or 609-235-2600

Hardware And Peripherals Continued

■ Pacific Cypress

RAM expansion boards/RAM disks

The XpanderII board is a 2MB RAM expansion board/RAM disk for the Amiga 1000 or 2000 that allows a user to use memory intensive programs. The board may be loaded in increments of .5MB, 1MB or 2MB, using 256K DRAM chips. The expansion slot allows a user to add additional boards to reach 4MB, or an optional SCSI-multifunction board. \$499 retail; 0 memory

The XpanderII 2MB unit is a self-contained 2MB RAM expansion board/RAM disk for the Amiga 1000. The board may be loaded in increments of .5MB, 1MB or 2MB, using 256K DRAM chips. \$499 retail; 0 memory

The XpanderII 4MB unit is a self-contained 4MB RAM expansion board/RAM disk for the Amiga 1000. The board may be loaded in increments of .5MB, 1MB, 2MB, 2.5MB, 3MB or 4MB, using 256K DRAM chips. \$799 retail; 0 memory Pacific Cypress; 46127 Landing Pkwy.; Fremont, Calif. 94538; 415-656-1974

The Pal

Expansion chassis

An expansion chassis that features a hard disk that transfers data via true DMA into the Amiga; a hard disk controller capable of a 10 megabit data transfer rate; five DMA expansion slots; 1MB RAM with a battery-backed clock/calendar that resides on the motherboard; room for multiple storage and retrieval devices; 2 to 8MB RAM card options; optional pass-through BUSS connector for further expansion; and optional prototyping card. Retail price depends upon configuration Byte By Byte; Arboretum Plaza II; 9442 Capital of Texas Hwy. N., Ste. 150; Austin, Texas 78759; 512-343-4357

■ Parallel Printer Buffer

\$199 retail; 64K

\$259 retail; 256K

Johnathon Freeman Designs, Inc.; PO Box 880114; San Francisco, Calif. 94188; 415-822-8451

Penmouse

Input device

\$295 retail

Kurta Corp.; 4610 S. 35th St.; Phoenix, Ariz. 85040

Plug-compatible, Standard 256K

A compatible, standard memory expansion in a heavy-duty metal case.

\$149.95 retail

MicroBotics, Inc.; PO Box 855115; Richardson, Texas 75085; 214-437-5330

Pow-R-Card

Memory expansion

An expansion board that upgrades in increments of 2MB to give a user a full

8MB of RAM. It fits all expansion boxes for the Amiga, including the new 7-slot expansion box.

RS Data Systems; 7322 Southwest Freeway, Ste. 660; Houston, Texas 77074; 713-988-5441

Series One

Graphics tablet

A graphics tablet that comes in three sizes and includes a pen, cabling, power supply and software driver.

Kurta Corp.; 4610 S. 35th St.; Phoenix, Ariz. 85040; 602-276-5533

StarBoardII

2MB memory expansion

A memory device that has optional multi-function features such as a battery-backed real-time clock, Motorola math chip socket and parity checking.

\$495 retail; 512K installed

MicroBotics, Inc.; PO Box 855115; Richardson, Texas 75085; 214-437-5330

Stereo Sound Digitizer

This unit is a hardware device designed to provide digital sound capture and recording for the purpose of adding high-quality speech and special effects to programs.

\$344.95 retail

The Micro Forge; 398 Grant St. SE; Atlanta, Ga. 30312; 404-688-9464

■ TIC

The Tic provides an Amiga with a tiny, battery-backed clock/calendar that plugs into the second joystick port.

The Tic's three-year battery will maintain time even if temporarily removed from the Amiga.

The Amiga's internal time can be changed by moving the displayed clock's hands with the mouse.

\$59.95 retail

Byte By Byte; Arboretum Plaza II; 9442 Capital of Texas Hwy. N., Ste. 150; Austin, Texas 78759; 512-343-4357

Universal Printer/Plotter Buffer

Printer/plotter accessory

Interfaces an Amiga to a wide variety of printers and plotters by providing RS-232C and Centronic Parallel interfaces on both its input and output.

\$269 retail; 64K model

\$329 retail; 256K model

Johnathon Freeman Designs; PO Box 880114; San Francisco, Calif. 94188; 415-822-8451

Volks Omega 80

Modem

Designed for the Amiga 1000, the modem features auto dial/auto answer; user selectable pulse/tone dialing; built-in audio monitor speaker; dial tone and busy detection; an auxiliary telephone jack; and on-line software.

\$199 retail

Anchor Automation; 6913 Valjean Ave.; Van Nuys, Calif. 91406; 818-997-7758

Accessories

Amiga Parallel Printer Cables

\$17.95 retail; six-foot

\$21.95 retail; 10-foot

Aprotek; 1071-A Avenida Acaso; Camarillo, Calif. 93010; 805-987-2454

Belkin Accessories

\$18 retail; Amiga parallel printer cable

\$89 retail; two-way parallel data switch

\$129 retail; four-way data-transfer switch

Belkin Components; 4718 W. Rosecrans Ave.; Hawthorne, Calif. 90250; 800-223-5546 or 213-644-3184

IVS Magnus

Computer audio system

\$99.95 retail

Interactive Video Systems; 15201 Santa Gertrudes Ave., Y102; La Mirada, Calif. 90638; 714-739-5020

■ MouseTime

Battery-backed, real-time clock

\$39.95 retail

MicroBotics, Inc.; PO Box 855115;

Richardson, Texas 75085; 214-437-5330

Universal Interface Converter

Interface conversion

Interfaces serial-to-parallel or parallel-to-serial at the flip of a switch.

\$99 retail

Johnathon Freeman Designs; PO Box 880114; San Francisco, Calif. 94188; 415-822-8451

Books

The AmigaDOS Manual

\$24.95 retail

Bantam Books, Inc.; 666 Fifth Ave., 21st Fl.; New York, N.Y. 10103; 212-765-6500

The Amiga: Image, Sound and Animation on the Commodore Amiga

\$19.95 retail

Microsoft Press; 16011 NE 36th Way; Box 97017; Redmond, Wash. 98073

Mastering AmigaDOS

\$16.95 retail

Arrays, Inc.; 6711 Valjean Ave.; Van Nuys, Calif. 91406; 818-994-1899

Progressive Peripherals & Software Books

\$24.95 retail; *The Amiga Handbook*

\$15.95 retail; *The Amiga System*

Progressive Peripherals & Software; 464 Kalamath St.; Denver, Colo. 80204; 303-825-4144

Sybx Books

\$24.95 retail; *Programmer's Handbook*

\$28.95 retail; *Programmer's Reference Guide*

Sybx, Inc.; 2344 Sixth St.; Berkeley, Calif. 94710; 415-848-8233



SWEAT SUITS

Redgate Communications Corporation announces a radically different approach to providing better service to our clients: working harder.

We work long hours because our clients work long hours. We work weekends because our clients work weekends. Our success depends upon our clients' success. We think you'll find our work ethic refreshing when compared to other marketing communications agencies. If you want an agency that works as hard as you do, give Ted Leonsis, Alfred Mandel, Diane Staley or Martin Olive a call, anytime, any day, at the office or at home.



Redgate
Communications
Corporation

Marketing Communications and Publishing
3381 Ocean Drive, Vero Beach, Florida 32963, Phone (305) 231-6904
San Francisco (415) 777-3911, Boston (617) 944-9897

WELCOME TO THE WORLD OF AMIGA COMPUTING

This is your complimentary copy of the *Amiga Buyer's Guide*, published quarterly by Commodore Magazines, Inc., in conjunction with Redgate Communications. If you would like to continue to receive the next four issues of the *Amiga Buyer's Guide*, please clip off the bottom portion of this page (make sure your mailing label remains attached) and send it with your check or money order for \$10 to:

**Amiga Buyer's Guide
Commodore Magazines, Inc.
Box 651
Holmes, PA 19043**

Commodore Magazines, Inc.
Box 651
Holmes, PA 19043
Address correction requested

Bulk Rate
U.S. Postage Paid
Permit No. 329
East Greenville, PA
18041



- Yes, send me four issues
of the *Amiga Buyer's*
Guide for \$10!
(Make checks payable to
Commodore Magazines, Inc.)