

YOUR

\$3.90

OCTOBER 1989

£1.30

# COMMODORE

Amiga  
C64  
PLUS 4  
PC  
C128



## NIGHTBREED

Things that go bump in the night

• Lifestyles 2000 • Role Playing Games • Program Pullout ...

ISSN 0269-8277



9 770269 827700

# DATTEL ELECTRONICS

## DATA RECORDER



- Quality Commodore compatible data recorder
- Stores records, updates, etc.
- Available for 486/133.
- Send now for quick delivery.

**ONLY £24.99**



## SPRINT 120

- Full featured time machine Printer Software.
- Personal print file/100 in a range of full size destinations Parallel printers.
- Easy to use - supports Commodore Graphics III.
- Advanced file compression 100% space to power! programmed to load.
- Works with most applications.
- No need to buy!

**ONLY £29.99**

## EPROM ERASER

- Erases up to 4 EPROMs at once.
- Results are visible both in front.
- Works like a glove perfect!
- Comes complete - no need to buy.

**ONLY £39.99**

## ROBOTEK 64



### MODEL & ROBOT CONTROL MADE EASY.

- 4 output channels - work with reduced rates
- 4 input channels - can fully control 4x4 LED board coding
- dedicated input with light 4 bit counter
- video input for video control.
- Software features - real world analogue, asynchronous, video or video integrated control etc.

**ONLY £39.99**

SEND ADDRESS TO: DATTEL ELECTRONICS, 100, ST. AUGUSTINE'S ROAD, OFF BEERS.



## MIDI 64

FULL MIDI SYNTHESIZER FOR THE SEVEN AT A BARGAIN PRICE.

- Full MIDI 16bit/150,000 cps.
- Compatible with most leading software packages.

**ONLY £29.99**



## DIGITAL SOUND SAMPLER

- The new sampler allows you to record any sound digitally into memory & store copies in real time - extracting effects.
- Playback formats: 16bit/150,000 cps with auto-reversing modulation. Now with full control digital control for precise re-sampling effects. Full 16 bit to 16 bit conversion.
- MIDI compatible with suitable hardware. (i.e. Sound card for 486/133 - see ad.)
- Auto effects such as reverb and time delay or reverb.
- Can be used to mix and playback control.
- Powerful expansion with mixing software.
- Control your music. Up to 8 samples to memory at one time.
- Complete software/hardware package. Type in that space now!

**ONLY £49.99**

## com-drum

### DIGITAL DRUM SYSTEM

- Now you can have your digital sound expansion into a digital drum system.
- Full MIDI 16bit/150,000 cps in memory at one time.
- Compatible with 4 drum kits. Real drum sounds - not synthesized.
- Control expansion from keyboard with real time effects.
- Full editing, 16bit/150,000 cps. Load! Save facilities.
- Output to 16bit or through TV monitor.

**ONLY £29.99**

SEND ADDRESS TO DATTEL

## COM-DRUM EDITOR

- 16 drum sounds supplied on disk to enable you to construct your own drum kit.
- 16 sample sounds supplied with a real-time to make new kits. Load/Save facilities.

**ONLY £4.99** (SEND TO US NOW)

## PARALLEL PRINTER CABLE

- Connects full size printers to the parallel port of your 1346/133.
- Many programs will work through Screen Display. (Print Controller etc.) will drive printers from this port.

**ONLY £12.99** COMPLETE

## A TOTAL MIDI MUSIC PACKAGE



SAVE OVER  
**£70**

UNBEATABLE VALUE PACK - THE YAMAHA 600 16 BIT 150,000 COMPLETELY REPROGRAMMABLE SYNTHESIZER. THE ADVANCED MIDI 64/150 SOFTWARE & MIDI INTERFACE PLUS FREE MIDI CABLES TO COMPLETE EVERYTHING TO YOUR COMPUTER SYSTEM.

## FREE MIDI CABLES

### YAMAHA 600 16 BIT SYNTHESIZER KEYBOARD

- 61-note digital poly-tone keyboard with electronic wrap. Top quality brass/steel.
- 16 bit 150,000 cps.
- 60 built-in instrument and rhythm patterns.
- Over 100 sounds.
- Full MIDI standard.
- Equally suited guitar type keyboard with electronic wrap.
- Includes 8 1/2" headphones or AC/DC adapter.



## RESET CARTRIDGE

- Reprogrammable reset device. 64/150 user power cleaner from most business software by whom we are not responsible.
- Reacts only to valid "reprogrammable" programs.
- Not just power line impedance etc.
- Simply plug in to cartridge port.

**ONLY £5.99**

## ADVANCED MUSIC SYSTEM

- A full feature Music Studio with MIDI editing and expansion features.
- Music features - 100 songs to edit.
- Easy - disk only.

## MIDI INTERFACE

- MIDI 15000/150.
- Simple plug in.

FOR ONLY

**£99.99**

NO MORE TO BUY!

## 3 SLOT MOTHERBOARD



### SAVE WEAR & TEAR ON YOUR EXPANSION PORT

- Will accept three cartridges in its high grade PCB.
- Works in most way also.
- Fully featured.
- Does not use real or software saving time.

**ONLY £16.99**

## Toolkit IV

### THE ULTIMATE DISK TOOLKIT FOR THE 1346/1341.

- A disk toolkit in an absolute must for the serious disk fiddler. Toolkit IV has more features than most for less.
- DISK CONTROL PG. - built in video. 400 lines in 4 colour (including video & compressed image). Superb. Detailed review.
- REPROGRAMMABLE SYSTEM - enables it display the format information (including all files & header) plus benefits the entire Sector 0 Sector gap (including header). Also will set sector fill gap.
- DISK LOCK - Read/Write. Prevents lost data. Display the current address. Shows write any file program directly from the disk to memory or memory to memory (undocumented operation). Run free.

- Start with COPY - activates the copy. Works all up to 8 files named open.
- Start with COPY - copy on video disk to a volume or from using single disk.
- FILE COMPRESSOR - run complete archive program by up to 100% from disk space.
- FORMAT PG. - 16 colour video on monitor disk on demand and individual track or full track 0 to 41.
- DISK COPY - quickly find & correct all bad sectors including audio & compressed tracks or across a full track from 0 to 41.

**ONLY £9.99**





YOUR PROGRAMMER  
PULL OUT PROGRAM SECTION  
SEE PAGE 31

# THIS MONTH'S PROGRAMME

**18 Role Playing Games**  
Mummy, mummy there's a strange man gibbering about demons in our kitchen.

**20 Nightreed**  
If you go down to Prawnog today, you're sure of a BIG surprise.

**28 Serious Software**  
Do you want to use your C64/128 in a small business?

**35 Indiana Jones**  
He always gets it lady and (get it - in the end) Oh well!

**10 Lifestyles 2000**  
Rick Henderson, writing

reporter, stands on the spot and reports.

## REGULARS

**6 News**

**8 Amiga Workbench**  
Made from the purest hardware.

**13 Desert Island Disk**  
Tony Crother goes on down! Ode, what a cliché.

**16 PC Career**  
Now go and stand in the corner. (Who writes this page?)

**21 Big Wobby Deepo**  
AKA. Bribe the editor page.

**26 128 Corner**  
And you can go and stand with him!

**31 Your Programmer**  
Loads of great programming articles to peruse.

**70 Software for Sale**  
Messed last issue? Don't worry you can purchase the listings anyway.

**62 Back Page**  
Rick's rather wacky comment on IFF, the universe and press releases.

## GAMES

**57 American Indoor Soccer**  
But the Americans don't play soccer, they've all got oval balls.

**58 Indiana Jones and the Last Crusade**  
No I'm not going to repeat my Indy joke.

**68 Tom and Jerry**  
I'd love to stand on that mouse!

**61 Jawz**  
Oh go, it's the pathetic shark.

**62 Miranda Death**  
Doctor, doctor, there's a soup in my flea.

**65 Hostages**  
Hello, I'm being held by the peoples republic of Horeel Horepbead.

**66 Time Scanner**  
I think I've run out of bull insects.

**57 Heroes of the Lance**  
Sounds like a bull extraction clinic.

**58 Treble Champions**  
One, two, three times a champion.

**68 Millennium 2.2**  
Watch the final front ear.

**70 Robocep**  
I'm waiting for the sequel - Robotraffic Warden.

**71 Nightdawn**  
Night Rail!

**72 Story so Far Vol 1**  
I'd cut a long story short.

**74 1st CD Edition**  
CDs Make great friends, you know!

**A** game man called through the office. He noticed that his colleagues around him were acting in a peculiar manner. Their eyes were hollow and, if stared into, could be described as bottomless pits. He started to fret and shift uneasily in his seat, and the others started towards him. As they approached, their top lips drew back to reveal slithering gums full of small, sharp canines where their teeth had once been. He tried to run...

...On just another day in the Four Commodore office.

We arrive at another issue, another issue. Some computer magazines may be heralding exclusives this month, but none will have Nightlord.

This new Clive Barker game has been delayed until April 1990 (and so has the computer game from Gremlin), but that doesn't stop us giving you a taste of what is to come - thanks to Steve Jones of Sparkline and, of course, Clive Barker himself.

But this is not the only money stored in your FUN FILLED SENSATIONAL SCRAMBLY PC. We also have our pulsed programming section, a feature on Role-Playing Games with an updated Round of the Shadow preview, A Lifestyle 2000 report, and no less than 15 pages of game reviews. As well as all your favourite regulars, surely we are the only complete Commodore magazine on the market.

I must dash now but if you're in the PC show on 27th September-1st October, drop by and we'll have a chat...

Rik Hindson

**Deputy Editor:** Richard  
Wreckly Krueger  
**Writers:**  
**Technical Editor:** Paul  
'Creecher' Don  
**Group Editor:** Stuart  
'Creature from the Black  
Lagoon' Cooke  
**Advertisement Manager:**  
Paul 'The Blo-B' Kensington  
**Sales Executive:** Maria

**Medical:** Wade, Jayne  
**'Bride of Dracula':** Mergold  
**Ad/Copy Control:**  
Kilren 'Carrie' Backford  
**Artist:** Alan 'Werewolf'  
Scribble  
**Designer:** Mark 'The Thing'  
Newson  
**Originator:** Sherry  
**Printers:** Chase Webb

The contents of this publication including all articles, designs, drawings and programmes and copyright and other intellectual property rights therein belong to Argus Specialist Publications. All rights reserved by the Law of Copyright and other intellectual property rights and by virtue of international copyright conventions are specifically assigned to Argus Specialist Publications and any reproduction requires the prior written consent of the Company. © 1989. Distribution SM (Distribution), 4 Leigham Court Road, London SW16 2PG. Printed by Chase Webb, Plymouth. Opinions expressed in reviews are the opinions of the reviewers and not necessarily those of the magazine. While every effort is made to thoroughly check programs published for errors we cannot be held responsible for any errors that do occur.

This Commodore incorporating Year 04 is a monthly magazine appearing on the first Friday of each month by Argus Specialist Publications Editorial and Advertisement office, New Commodore Argus House, Boundary Way, Hemel Hempstead HP1 7SE. Telephone (0442) 86024. Subscription rates upon application to Your Commodore Subscriptions Department, Inform Ltd, 4 Kew Park Estate, Twickenham, Herts MK4 1RL, U.S.A. Subscription Agent: Wise Owl Worldwide Publications, 4144 14th Street, Torrance CA 90505 U.S.A.

ISSN 0260-8277

ABC  
A COMMODORE PUBLICATION

## Quick on the draw

**D**OMARK, the company renowned for its issues of Trivial Pursuit, the computer game, has done it again. The license grabbing team at Demark headquarters are set to launch the computer version of the hit game Dictionary.

If you haven't come across Dictionary where on Earth have you been living? It bears a certain resemblance to charades, but you are expected to draw the word for your team members rather than act it.

## Micro Illusions - on their own

US based Micro Illusions is set to go on their own in the UK following a recent split from its UK distributor Activision.

After a couple of months uncertainty as to just who

Demark claims that it has an "innovative graphics package" that allows the drawer to produce lines of varying thicknesses, circles, rectangles, solids, etc., with ease.

Dictionary, the computer game, allows teams to either draw the words for their team members, or, if they don't feel up to it the computer can draw the words.

Dictionary should be out in September for the C64, PC and Amiga. Contact Demark on 01-768 2222 for more information.

was going to publish which product, Micro Illusions has announced that all of its products will be distributed in the UK by itself. Watch out for new titles with the Micro Illusions label in the near future.

Micro Illusions can be contacted on (0442) 496497.

## Budget Blast-em

**B**ONCASTER based Blue Ribbon is set to get your trigger finger twitching with its latest 2.88 C64 release - Syntex.

Armed with the latest cassette tape speaking on about you having to handle the latest impulse drive fighter you can't go far wrong.

If you're the sort of person who prefers something that challenges your brain cells rather than your trigger finger then HIQ Quiz may be right up your street. Also priced at 2.99, the game features questions on Sport, Entertainment and Geography.

Blue Ribbon can be contacted on (0022) 321134.



Below: The Total man are coming...

Above: Syntex - surely an error!



### It's a joystick - honest!

WHEN the picture of Spectravideo's latest joystick fell out of the envelope it was greeted with cries of "What on Earth's that". With a styling that looks as though it would be more at home on the bridge of the new Starship Enterprise than the living room floor the Q5-118 Wizardmaster appears to offer everything that the professional gamer requires.

The Q5-118 features 3 different control mechanisms, push buttons (finger and thumb) control or two different sized levers, 2 fire buttons, auto fire and a computer system select switch.

Three versions of the Wizardmaster are available, the Q5-118F priced at £11.95 is the one that works with the C64 and Amiga. Contact Spectravideo on (0233) 353455 for details.

### Super Wonderboy is Dynamite

SOME game titles have obviously had hours spent on deciding on a title. Activision can't be blamed for the exciting title of Super Wonderboy, one of its latest coin-up conversions. Super Wonderboy is the second of Activision's wonderboy arcade licenses. The hero of the original game, launched way back in 1987, has now grown up and is called upon to defend the people of wonderland from a fire-breathing dragon.

Super Wonderboy features 11 levels, 18 different weapons, winged boots, various types of armour, different shields - everything a young hero could want.

Activision's second coin-up release is Dynamic Duo. Activision claims that we are in for a treat with the casual game around featuring cartoon style graphics, six levels, two bonus levels with extra battles on the 16 bit versions.

Watch out for these releases in September. Contact Activision on (0734) 313666 for more info.

### New show for Capital

A NEW computer show is set for launch in London in November. The Computer Shopper Show will take place at Alexandra Palace from November 24 to 26. Well known companies already planning to appear at the show include Evi-

sham, Protronic, Trilogic and Tycom. Commodore UK will be taking a major role with the "Wonderful World Of Commodore" described by the organisers as a "major exhibition in its own right within the Computer Shopper Show".

So if you're after pre-Christmas bargains get to Ally Pally in November.

# PREVIEW

TUESDAY, 14.04.1992



Above: Mystery of the Mummy - Rainbow Act



Above: Crossbow - The Legend of William Tell - Screen 7



Above: Fallon Angel - Screen 7



Above: Wind Dreams - Whizzard

More from the

Amiga

By Burghard

Lehmann



# AMIGA WORKBENCH

**W**hen thinking about what to write in this column, it just crossed my mind that I haven't so far touched the more astonishing things the Amiga can do, like its amazing graphics and sound capabilities. Maybe people would like in a column like this to hear more about how to get into programming these. (By the way, as I said in the first of this column, let me know about your interests and opinions!)

On the Amiga you have basically two ways of accessing the more powerful features of the machine. The first involves programming the hardware directly. If you are a machine code programmer, this is less difficult than you might think.

The second way, and the much better one to start with, is by making use of the many facilities the operating system offers you. That is, by using the library functions of the Amiga.

The libraries give you access to nearly all the advanced features of the Amiga, especially when it comes to graphics. You get most of what you want from the graphic library which includes some 99 functions. These allow you to draw lines, fill in spaces, animate objects and much more.

The graphics library also includes some neat printing routines.

On the Amiga text is created just like any other graphics. The advantage of this is that text and graphics can be intermixed freely.

If you program in Basic, most of the advanced facilities of the Amiga are available to you in form of Basic commands. Amiga Basic from Microsoft is quite good in this way, once you get to know it. The only appalling thing about it is the editor. In my book the Amiga Basic editor ranks tops in the list of the worst programs ever written.

But the word is, that Microsoft is developing a new version of their Basic which will be bundled with Workbench 1.4, expected to get onto the market sometime next year.

Anything has to be an improvement on the appalling present editor. I only hope that Microsoft will indeed spend some considerable time on improving the editor and not concentrate all their time on developing fancy new Basic commands and then do the editor again on the quick!

Amiga Basic also allows you to use the Amiga libraries. This is one of its strongest features, even though I would advise you to consider changing to C or assembler if you want to use the libraries extensively and do serious programming.



the world of  
Amiga  
hard-henry  
mann

# AMIGA BENCH

## AMIGA WORKBENCH ■

This brings me to my pet-hate, which is C.

C is supposed to be the language of the Amiga. Most of the examples given in the Amiga Reference Manual, published by Addison Wesley, are given in C.

Unfortunately, C is expensive, and, considering the time it takes to compile and link a program in C, I can't see for the life of mine what the supposed time advantage in program development over assembler is to be!

I program in assembler, using the Gen-Asm assembler by BSoft. Most programs I can execute almost immediately after I have written them and inspect the results of my efforts. Even if I break a large program down into modules and have to link them, I can look at the fruits of my labour far sooner than with C!

At this point a spot of advice to assembler programmers: Even if you have an assembler that can use the *Amiga* *include* files, don't use them! It takes far too long for the assembler to assemble all the include files which are needed from disk. Sometimes your source needs only one or two variables out of hundreds in a complete include file.

Instead, type the library offsets and other system equates your source needs at the beginning of the source file in yourself. This is initially a bit more work, but once you have done this, you can use most of it over and over again by just merging them into any new source file you are writing - that is, if your assembler has got a merging facility, which it surely has, if it allows you to use include files... This additional work pays off handsomely in having your source files assembled in next to no time.

If you program in C, you have no other choice but to use the include files. This is why compiling a C program can be such a long drawn out process.

At this point some of you might inquire, what on earth *include* files are.

Include files are simply lists of system variables compiled by Commodore in order to make life supposedly easier for C and assembler programmers. On other machines you have to compile these offsets and variables yourself from books and manuals. The include files, which come with every C-compiler and with most assemblers, make it unnecessary for you to type these things in yourself. And, as I've said, C-compilers depend upon include files.

There are two types of include file: The *i-include* files for C-compilers and the *b-include* files for assemblers. All include files are categorised by the Amiga libraries. E.g. there is an include file for the Exec library, one for the Intuition library and so on.

If you want to have a look at an include file, simply use the "type" command from CLI or load the include file into Ed, the CLI editor, or any wordprocessor.

Amiga Basic also requires include files if you want to use libraries and devices from it. Unfortunately, Amiga Basic can't do with either the *i-include* files nor the *b-include* files. It needs special include files, called "bmap". There is a program on the Extras disk which converts any include file into a bmap-file which can be used by Amiga Basic.

Finally, programming the Amiga hardware directly is, as I said, easier than you might think. What you do here simply is you write certain values into certain fixed locations. These are the registers of the special chips of the Amiga. This is very similar to programming, let's say, the *STD* sound chip on the Commodore 64.

Most of the information you'll need for that you'll find in the *Amiga Hardware Reference Manual* published by Addison Wesley. For people who are into machine code programming, this is the easiest to digest of the four massive reference manuals.

Even better, especially if you want lots of example programs in assembler, is the *Amiga System Programmer's Guide* published by Addison. And then, I may tell you, there will very soon be a book on this subject on the market, written by yours truly and published by Dials Press in England.

If you ever want to attempt to program the Amiga hardware directly, you have to be aware that the Amiga is a multitasking machine. Therefore, you can't program the Amiga as if you've got the whole machine to yourself. Whatever memory your program needs you have to allocate using the functions provided by Exec. If you program the hardware directly, very often it is a good idea to briefly suspend multitasking by using the *Exec Forbid* library function.

Always remember to switch multitasking on again with the *Permit* function and, when you are done, to free the memory you have allocated for your program! Otherwise it isn't fair to other programs!



Above: The Probe R. I want and

# FUTURE SHO

Rik Henderson visits  
The Daily Express Lifestyles 2000, and is thrust  
forward in time to sample  
a taste of the future.

Photography by Frane  
Maroevic

Although *Lifestyles 2000* was hyped in just about every form of media, I really did not know what sort of show to expect. I knew that there would be many companies jostling to grab the punters' attention, but how much were they going to express the idea of life in the year 2000? Not much was the answer I came up with. But does that stop me from enjoying myself, not bloody likely.

There were many stands, the majority of which being larger than an average one bedroom flat, although whoever came up with the idea of placing Sky TV next to BS2 had better think a little for the next show – and a next show there will undoubtedly be.

We (my photographer pal, Frane, and myself) meandered into Olympia with our knees knocking (well, pretty prodding the doorbell) with anticipation, when our eyes popped out and our tongues rolled to the floor; for there in front of us was the bar.

Once our palates had been christened with the beer of the year 2000, we set about to unearth some world shattering exclusives. Our first stop was the rather splendid Ford stand, with its air of the future the Probe V. A very slick car indeed and one to be seen in. It has actually been heralded as more aerodynamically efficient than a super-sonic F15 military jet fighter. I'd swap it for my Raleigh Winner anytime.

We then strolled off to the Network Southern carbank of a stand – after we'd broken out of the trance that the Probe V had placed us in – which was a lot better inside than out. It presented an accurate representation of what commuters – myself included – will be travelling on in the early nineties. It was very nice too, with digitised displays presenting time, destination, and current stop (this is in the first class section), as well as individual light switches for each passenger. The only problem I have with this is that the first line these trains will be installed on will be the Chiltern line. For those who don't know, Wembley Stadium is on the Chiltern line; I wonder how long the T7 vehicles planned for delivery in late 1999 will last?

On our way to move fan and future loaves we passed the *Katber* stand, and on a hot day, such as it was, the prospect of a free drink was a pleasant one to say the least. "But it's got no alcohol in it!" exclaimed Frane, oh what a chaotic we had.

The BS2 stand was far more extravagant than the one accommodating SKY, but then it had to be because of BS2's failure to release a satellite dish that works. They were even giving away free badges of course, digitised on a normal video camera. Naturally I went back a second time, there's nothing better than having something (or two) to remember the show with, even if they make you look a complete dipstick. But again, I do not see how this links into the theme of the year 2000.

The most impressive stand of all must go to *Tomorrow's World*, their stand was so large that they had constructed a complete studio in the centre. Around the studio were lots of visual exhibits, featuring inventions and gadgetry that had been displayed on the show at one point. An honourable mention must go to the light drums, this provided hours of endless laughter (at least a few minutes) watching people trying to hit objects that they could not see. Practical? Not on your nelly, not for drums anyway. We watched an episode of *TW* being made with the public controlling all aspects of the production, one could hardly tell the difference between this and the real version.

The ultimate part of the show, for me, was the fashion show. To send you into the mood of actually looking at the clothes and not the pretty girls parading them, the escapade had a theme. "In the year 2000, the ozone layer has been destroyed, the green house effect is total" was the scenario, but honestly



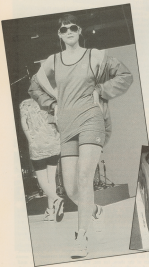
Above: Rik Henderson in a rather peculiar aircraft.

# OCK

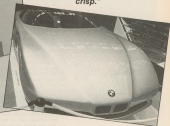
YOUR COMMODORE

Eleven

Before it that's a model. I wouldn't mind sticking it together!



*"I don't really see how a pair of cycling shorts and a rather flimsy top will stop you being fried to a crisp."*



I don't really see how a pair of cycling shorts and a rather flimsy top will stop you being fried to a crisp. Oh well, the girls were pretty.

They must of been dying in the boiler suits that they had to wear for part of it, the whole exhibition was baking hot, and Frank and myself welcomed every chance we could get to have a rest. Fortunately we had plenty of chances, and therefore experienced a wonderful time.

Maybe *Lifebytes 2000* wasn't quite the right title for such an exhibition - I would have liked to have seen a little more futuristic equipment, in preference to a bubbly spa bath - but for all out enjoyment you cannot fault it. Frank had a great time too, and even walked away with a radio tap as a prize (photographers nowadays, huh).

Also missing was an in-depth look at the essential environmental issues - far more important for the year 2000 than satellite television - although *Forecasts of the Earth* were there, just not in force.

# GETTING OVER PHOBIA

Rik Henderson not so  
much grills Tony  
Crowther, but bases him  
slowly on gas mark 4.  
Well marinated of  
course.

**O**n Monday 17th Jan I was bundled in the back of the new Cookmobile with the sole intention of interviewing a certain Tony Crowther. But to my surprise – after I was let out of the sack of course – Sheffield had far more to offer than anticipated.

To say Tony is dedicated to his profession would be an understatement. His life revolves around programming, and now that he seems to be flavour of the month at Microsoft, his future is looking very bright indeed. However, his past hasn't exactly been a failure. If one was to list all of his published games, that would take up pages alone, but everyone would recognise at least one of them – *Misty Maze* for instance. Having recently finished all the conversions of *Phobia* (20) to *Amiga*, *Amstrad* and a *YC SURESHOT*, he is to embark on an enormous project which is to last eight to nine months.

The new game is currently carrying the working title of *Federation War*, although Tony mentions that this is very likely to change. It is unlike any other Crowther game in the respect that it has a Role Playing theme – although not in the world of *Bards Tale*, *Alternative Reality* etc. – and it will be fairly complex in gameplay.

## INTERVIEW ■

Based very loosely on the plot of *Star Wars*, you play the part of an evil commander (not unlike Darth Vader) and you must clear a planet from rebels who do not wish to comply with the Federation. Once this task has been completed you can turn on your superiors and try to take over the Federation base (not unlike the Death Star).

All this is done using a rather new graphical style. The map on which the action takes place is seen in a top-down view, although everything is heavily 3D. Columns, walls and other landscape features (such as a waterfall) rise out of the darkness below, towards the screen, and you can zoom down to see the floor. All the graphics are very well drawn, which is not surprising as Tony is at heart an artist, and he has recently programmed himself an easy-to-use Amiga Sprite Designer.

## PERSONALITY PROFILE

Name: Tony 'Bat' Crocker

Age: About 24

Favourite Computer: Amiga

Favourite Software Company: Microsoft (naturally)

Favourite Films: *Archway*, *Pink Floyd's The Wall*, *The Last Seafighter*, *Any Schwarzenegger movie*

Favourite TV Shows: *LA Law*

Favourite Books: *SSBQ Manual*, *Music Art Books*

Favourite Foods: *Lisa's Cooking* (grovel)

Favourite Records: *Anything by Iron Maiden*

Favourite Sports: *Cycling, Soccer on TV*

Favourite Papers: *The Reader* because it comes free through the post

Favourite Magazines: *Any with good reviews of Commodore games*

Worst Computer: *Spectrum*

Worst Computer Games: *Any games that rip off an existing one*

Worst TV Shows: *Neighbours*

Likes: *Programming*

Dislikes: *Lisa in a bad mood, Crap games, Not being able to drive*

Other Hobbies: *Reading (A1)*



**"All the graphics are very well drawn, which is not surprising as Tony is at heart an artist..."**

# Desert Islands Disks

**I** asked Tony that if he could have a computer - he requested an Amiga and a 250W power supply whilst stranded on a desert island, but was only allowed to bring along two pieces of software, what would he take?

## AmigaWorld

"This would indicate the need for any other utilities beyond program my self. I don't like using other people's utilities systems."

## Desktop Master

"I was so impressed in DM that when I faced the wizard, and couldn't get past him, I phoned PTL in America and asked them for help. Since then I've completed *Chess Strikes Back* - working for Microsoft don't have its advantages."

## Nebula

"A very good game, possibly swayed by the fact that I received a free copy."

## Shadowgate

"Although this was my last favourite of the Minskape games, it deserves a mention because I completed it in a day. David Bishop and I communicated over the phone, proving the old adage 'Two heads are better than one'."

## Shanghai

"I often play this with Lisa (the wife). It is one of the few games she enjoys."

## Emerald Mines 1 + 2

"I'll count these as one game, because I've got them both on one disk. I can't remember if they are called Emerald Mines or not, but I think they're better than Boulderdash, although almost clones."

## Bombard

"Okay, so it's my own game. I still play it often, it reminds me of all the hours I spent designing the screens. A lot of thought went into the laser ones."

## Glenn Sisters

"A silly little game, but fun none-the-less."

## Sargass

"A sick game and very enjoyable. It's a shame though, my disk has gone corrupt."

## Any Infocom Adventure

"I have completed *Zork One*, but the Infocom adventures are easily my favourite games of all time. I prefer games that require a lot of thought."

And so we left the Crowther household and visited my favourite part of Sheffield, The Pub. The regulations may also go to the Crowthers as only three days after the interview *ITW-Crowther* gave birth to a bouncing baby girl, Sarah Anne Crowther.

## ■ PC CORNER

Dear PC Corner,

I am writing to profess my thanks for the recent inclusion in your magazine of the Commodore PC's feature; and to inquire as to whether you may possibly be able to assist me with a few queries I have.

I recently decided to pursue a series of studies with the Open University. Armed with my trusty C64 I set about enquiring about the O.U. Information Technology course. Unfortunately I found that my C64 was not suitable for the course as it is not IBM compatible. The O.U. stipulate that the machine used for the course should use MS-DOS and have a minimum 512K RAM.

I therefore began to check out my local vendors. I soon discovered that I could get hold of a Commodore PC1, which I did. Oh yes, so I now have a machine matching the O.U.'s criteria, albeit a very basic one. Some time in the future I would dearly like to hoof it up. I want back to the vendor and asked my questions of a blank-faced branch manager, and more than 2 weeks later I am still awaiting some form of written reply!

As I purchased a very basic PC, I am aware that I can increase memory on the motherboard up to 640K, however, with some commercially available software requiring upwards of 1M, obviously 640K is insufficient. I would like to add more. I asked therefore, with the present configuration of my machine, is it possible to add a hard card, and if so, how would I go about it? In the future of time, and as funds become available, I would also like to add other facilities such as a modem card and a fax card. Again I was met with a blank stare and "Give me your name and address, I'll consult our technical people and come back to you". Some two weeks later, I again visited the shop "No answers yet", and the same blank stare. Then I asked if I could upgrade the CGA card from the PC1 and replace it with an EGA card, or even a VGA card. I'm currently awaiting an answer from their "Technical People" on that last!

As the PC1 is an IBM clone, I assumed that there'd be very little or no problem with what I want to do, but I would like an authoritative yes or no before I commit my precious finances.

I bought Your Commodore whilst I was using my C64, and in all honesty, have been earnestly looking for a PC magazine with a Commodore bias. In fact, I purchased the August 89 edition of the magazine because I still own my C64, and I wanted to study the listings to see if I needed to use any of them, when I stumbled across your PC feature. As I now have a PC1 and a C64, I now have twice the reason to continue purchasing your publication. When I purchased the PC1, I got Concept DATA's ABLE 1 software and GW Basic that was bundled with it but I am curious as to whether or not, as with the C64, the Plus/4 and the C128, you provide listings in the magazine; are there any plans to include a similar facility for the PC's either in GW Basic or in any of the other languages available with these machines?

Altmair Ian McCull, Thornaby-on-Tees.

Dear Altmair,

The problem of trying to get information about a computer from a sales man is an old, old story. You don't say exactly where you purchased your PC1 but I'm betting that it was from a main stream high street dealer. In my opinion the after sales help/service provided by many larger shops is deeply atrocious, once they've got your money they simply want to give you your nice new

Got a floppy  
hard drive? Our  
PC Specialist  
your PC pro



# PC CO



package and watch you disappear into the distance. I have found that you can get much better help if you purchase computers, peripherals ect. if you go to a local computer dealer. OK as they may not be able to offer you all of those wonderful deals that you get on the high street but they are far more likely to be willing to offer you advice in the long term.

That's enough of me griping on, now for your queries. A hard card can be fitted to your PET. Address in Southampton produce one that is suitable. Address can be contacted on 05031-578282.

Any PC standard modem and fax card can be plugged into the expansion bus as necessary.

Now for the video cards, replacing the CGA card involves disabling the onboard video by switching on switch 4 as detailed in the user manual, page 113. Your new video card will need to be placed in the expansion bus also.

Unfortunately you only have three available so it's your decision which board you choose to use.

Your Commodore has prided itself on the quality of its listings for many years. As Commodore venture into new computers it is the magazines intention to move with them. Thus, yes we do intend to produce PC programming features and listings. However, while we have a large number of C64, PlusII and C128 programs arriving on our doorstep our day we have never had any for the PC. So come on out there if you are into the PC and would like to write programming features or have produced a program that you think will be of interest to other readers of Your Commodore, get in touch!

**P**C Corner is designed to be your forum in the World of Commodore PCs. If you have any opinions that you would like to share, questions that you would like to see answered, or simply ideas for articles then do write to us. Without your help we can't make this column work.



Due to the pressures of getting a magazine out each month we can only answer queries through this column and cannot answer them on an individual basis.

# CORNER

# WOT NO

**Intergalactic layabout  
Alex Bardy explores the  
enormous world of Role  
Playing Games.**

**E**xplain the basic principles of a role-playing game (RPG) to the average "man in the street" and opinions tend to be varied, some are plain mystified ("It's a boardgame without a board!"), while others find it quite fascinating ("It's been thing since sliced bread and...erm...monopoly?"). Truth be told, RPGs have been around for well nigh 13 years now, and probably an awful lot more if people had truly recognized it in times long passed, originally considered a direct descendant of the wargame, these past two or three years have seen the role-playing game become something of an artform among certain factions. 'The Hobby' has grown immensely in popularity in recent years, commensurate with the comic and computer games industries actually - and the key to all this growth? Quite simply, creativity and leisure. And nowhere are these two factors more in evidence (as indeed, more important) than in a role-playing game...

The very idea of taking on the role of somebody else (much like an actor or actress in an award-winning oojamallip) opens up a world of possibilities for the individual, but when that role can be anything from an alien to a superhero, a cowboy to a 19th century explorer, or a human to a fantastic creature of myth, that world of possibilities becomes all the more exciting, and there are usually three or four of you all playing such varied roles - that's what makes an RPG that little bit extra special.

Given a competent GameMaster (GM) - the person who 'runs' the game - a role-playing session can literally last for hours and hours (all fun once at that!). The major difference between your everyday comic or computer adventure game and a role-playing session lies in the flexibility of the game - even the largest computer running the largest adventure game has a finite number of branches and/or endings. Not so with a role-playing game, which can (theoretically) run forever, while still continuously varying: the "limits" of an RPG are classically defined as "the GM's imagination and leisure time", and that's about as accurate as you can get without doing a wobble over the philosophical/metaphysical possibilities, etc.

Some of the more popular RPGs currently available include:

**DUNGEONS & DRAGONS (D&D)/ADVANCED DUNGEONS & DRAGONS (AD&D)** - the grandfather of them all, D&D is still very popular even today, not just because of the huge amount of support material available for the system. For those who don't know (and haven't guessed), D&D is a fantasy-orientated game with elves, fairies, orcs, and yes, dragons too - all making up a colourful and dangerous backdrop for adventure.

**TRAVELLER/MEGATRAVELLER** - another 'oldie' although this time the backdrop is a huge universe of galaxy-hopping travellers. Laser rifles, giant spaceships, and loads of technological marvels abound in this game, and support material (sourcebooks, scenarios, etc.) is extensive to say the least.

**CALL OF CTHULHU (CoC)** - the first of the new breed of RPGs, CoC is an RPG tied not so much to a particular genre as to a particular world (or more accurately, to the 'worlds' of a particular author). The gentleman in question is one Howard Phillips Lovecraft, a nihilistic author of early 20th



Above: Book 'em  
Dandy

*"The very idea of taking on the role of somebody else (much like an actor or actress in an award-winning oojamallip) opens up a world of possibilities..."*

# BOARD



Alas, I wasn't even born yet, actually!

century, his stories tell of some of the nastiest horrors you could never wish to meet, and he linked together two mythical worlds of such contours (The Dunsanian Tales and The Cthulhu Mythos respectively).

The Call of Cthulhu RPG was originally based on Lovecraft's mythos tales, but the game system has since been expanded to cover nearly all his works. Support material, once again, is generous. Recommended.

**TWILIGHT: 2000 and 2000AD** - two RPGs (loosely) set around our own Member Earth, the former is one of the very few post-holocaust RPGs currently available, while the latter is set in - surprise, surprise - the year 2300 - a time when several powers (notably French, American, and Chinese) have achieved space travel, and colonised planets around the galaxy. Both these games are well supported, and as an ardent fan of 2000AD, the latter comes highly recommended.

**MARVEL SUPERHEROES and DC HEROES** - both of these games (licensed by Marvel and DC Comics respectively) allow prospective players the chance to don fancy dress, mask, and all-important tights, and to go around leaping tall buildings and leveling blocks with single blows, etc. Great fun for all, and support material isn't thin on the ground for either game...

**JOURNE** - a truly different RPG this, it's a sort of science-fantasy game set in a world where magic and science become one and the same. The game has been around for quite some time, and has something of a token following at present, it seems to be becoming increasingly popular though.

Set in its own world, Journe has an awful lot going for it, the complete 'alien-ness' of the world it's set in is just the first of many pluses. Unfortunately, there's very little support material for the game, and it looks set to stay something of a cult game rather than anything else.

**BATTLETECH** - this 'RPG' started life as a wargame and, after almost 3 years, has recently become extremely popular with the masses. The game revolves around huge metallic beasts (much like those Transformers you see in the TV ads) beating the hell out of each other across all kinds of terrain. Fun while it lasts, the game has been given tremendous support (indeed, over the last few years no other game has matched it for the sheer volume of material that's become available).

**GURPS** - GURPS (Generic Universal Role-Playing System) is an attempt to make an all-encompassing roleplaying - the game system has been designed in such a manner that you can use it for all settings, be they fantasy, SF, cartoons, espionage, or whatever. It's an experiment that's proven very successful, and currently available are sourcebooks (with extra rules, etc.) for all types of RPG, and even particular authors - there are books specifically covering Andre Norton's WITCH WORLD thingy and Alan Dean Foster's books for example.

**SPACE: 1889 (1889)** - one of the newest RPGs to be released, it covers a kind of pseudo-historical 19th century where a guy called Thomas Edison has discovered space travel, and people like H G Wells and Jules Verne are most certainly not crazy. Venus, Mars, and the Moon are also inhabited (by lizardmen, martians, and scientists respectively). Oh, and lasers, the atom, fusion/ fission, etc. haven't been discovered yet - if it all sounds a bit weird, that's because it is, for it's a marvel of game design, and plays extremely well to boot! And all the Victorian 'dressing' does nothing but enhance the game's overall effect on the players. Support material is limited at the moment, but things seem to be picking up in this direction now. 1889 is my personal fave of the bunch at the moment but I'm sure I'll get over it soon, promise...

# HOUND OF THE SHADOW

Those familiar with the 'Call of Cthulhu' role-playing game will recognise the theme behind Electronic Arts latest computerised role-playing adventure. Having a distinct Cthulhu Mythos flavour, it is based in London in the rip-roaring 1920s - and we can be assured that there is more than a tad of horror involved.

The first task to be performed, as in the RPG, is to create a character. This is done very impressively, using mood graphics to the maximum effect. You can be male or female - this is your first choice - American or British, and you can choose from numerous professions. Not only are these characteristics involved (you do not get to see them, only sentences on what sort of person you are) the skill system is enormous.

There are many skills which you possess, but they are all set at an average level. Once you have determined how experienced your character is to be - via age, etc - you get to raise some skills a little, in order to be more adept at certain tasks.



Right: He will also be grabbed by the graphics.



Left: What's this I spy, well blow the cover off a pub.

The gameplay itself is rather like a text adventure, although graphics are well distributed throughout. The difference between this and, say an Infocom adventure, is that **The Hound of the Shadow** is completely interactive. Depending on how proficient you are at certain skills, different text will come up at some sections. Every little feature that your character has, which makes him/her an individual, has an effect on the play, although it is possible to complete the game with any sort of character.

The parser is not enormous, nor is it overly complex, but this is not a programming error, it is in fact a feature. The parser is very simple to use indeed. This saves you the hassle of having to find the correct words to key into the computer in order to complete a simple logic problem.

Unlike most other adventures (which describes **The Hound of the Shadow** perfectly), this game goes not rely on objects to build a complex clue pattern. Instead people are the order of the day, provoking you to take more active role in what goes on around you, and allows you to slip into your character easily.

Every action undertaken eats away time, which is important to the plot. The timeline is a very important feature. This is to be vintagely adhered to otherwise the Hound, for it is after you or your friend, will rip you to shreds in typical H. P. Lovecraft traditions.

The graphics are very moody, painted in a duo-tone style in a crumbly colour of beige/brown - much like those older photographs found in everybody's attic. The game text changes every time it is played with another character, and there are many, many small features added which make the game seem a little more personal to the particular character involved.

Although **The Hound of the Shadow** is not in the Bard's Tale mould, it is in every way as much an RPG, if not more so. The interaction level is superb, and rumour has it that if this is a success, more will follow with the ability to use your previous character(s).

Rob Henderson

# A SHEEP IN WOLF'S CLOTHING

Win a sword, care of those wonderful people at Audiogenic, in our Lone Wolf competition. Maim your neighbour, Silence a friend...

**Y**ou too can be as barbaric as Hermal Hempstead, as masochistic as Rick Henderson, with a Lone Wolf-Playing sword made from fangs (no, you don't want you hurting anybody now, do we. Do we?) This is the first prize in our Lone Wolf competition.

Also included as first prize are the two new Lone Wolf novels (signed of course). Four second prize winners receive the two signed books.

What you have to do is study the photographs to the right and think of some speech bubbles for what you think may have been said - the sillier the better.

Write them on the back of a postcard, or sealed envelope, and send them to:

Silly Buggers Compo, Your Commodore, Argus House, Boundary Way, Hermal Hempstead, HP1 7ST.

Closing date: 31st September 1988.

## The Rules

Entries will not be accepted from employees of Argus Specialist Publications, or Audiogenic. This restriction also applies to employees families and agents of the companies.

The entry restrictions form part of the rules and the Editor's decision is final. No correspondence will be entered into. In the event of a postal strike, we reserve the right to extend the closing date.

BIG WOBBLY COMPO  
 BIG WOBBLY COMPO  
 BIG WOBBLY COMPO  
 BIG WOBBLY COMPO  
 BIG WOBBLY COMPO  
 BIG WOBBLY COMPO



BIG WOBBLY COMPO  
 BIG WOBBLY COMPO  
 BIG WOBBLY COMPO



**Clive Barker's new film has a dark fantasy theme. Dave Hughes and Alex Blair talk to him on a very frantic, very elaborate, Pinewood set.**

**Photography by Murray Close**

**C**live Barker, although a prize-winning and highly-acclaimed horror writer, playwright, orific and general man-of-the-moment among horror fans, it is without a doubt the film **HELLRAISER** for which he has earned himself most notoriety. A brilliant, stylish, complex collage of ideas, images, brutality, sexuality and death, **HELLRAISER** was Clive's directorial debut, a film made on a shoestring budget which has become the horror movie of the Eighties, establishing its central bad-guys, the Cenobites, as the new Freddy Kruegers, Michael Myers and Jason Voorhees. A sequel has already been released in the UK, although Clive himself merely oversees the making of the movie, and there are plans by a third. Now Clive is working with a big budget, at a big studio, with big names and big ideas. As he told me on the set of the new picture, **NIGHTBREED**, "**HELLRAISER** was a little horror movie; this is a big fantasy movie. **HELLRAISER** was one house in Criklewood; this is five sound stages at Pinewood Studios."

**NIGHTBREED** is based on one of Clive's own novels, **CABAL**. It follows the story of Boone, an innocent but mixed-up man convinced by his psychotic psychiatrist, Decker, that he is a multiple murderer. Fleeing the authorities, Boone discovers a lost city wherein reside all the rejected horrors of the earth and, having unintentionally led his pursuers to the city, fights to save it from those who would destroy that which they don't understand... It is written by Clive Barker and stars **THE FLY**, **VIDEODROME** and **DEAD RINGERS** director David Cronenberg and **HILL STREET BLUES** star Charles Hall. Clive says it is "much more than a horror movie", describing it as having "more heart, less red meat" than his earlier films. A dark fantasy movie, then? "Absolutely," says Clive. "There is a large action element to it, and no movie that stars David Cronenberg can be entirely safe for minors."

The set itself is a mixed bag, placed as it is between the famous 600 sound stage and the top secret **BATMAN** set. Canadian police cars and trucks litter the exterior locations, where Clive delightedly points out the exact spot of waste ground where one of Decker's more heinous crimes is committed (sorry, this is a family magazine). Impressive enough is the unfrazzably high wall of the city, Mohan, which has been breached by the Sheriff (Charles Hall) and his men as I write. Talk is of a major scene involving a crashing juggernaut, which involves some taxing special effects, and Clive's air is of excited anxiety. Inside, elsewhere in the sprawling Buckinghamshire studios, the place is infested with every grotesquerie imaginable. **NIGHTBREED** is said to contain over two hundred separate monsters, with **HELLRAISER** special effects team Image Animation once more providing some astounding visuals and, working closely with Clive, ideas for the monsters themselves. I am asked if I am available to be another monster (they are tribes short on extras or make-up...) - in fact, Conan Koffman's Gary Busey has already been tapped in to play one of them during his research for the forthcoming computer game - but I decline and watch instead as Clive goes through the motions for another scene, before wrapping and sparing me some time over lunch for a chat.

His attitude is very clearly different to this film; he knows his financiers will be watching closely, and it is important that the film does good business both here and in the States. Recent box-office successes in the fantasy genre (including **INDIANA JONES AND THE LAST CRUSADE**, **BATMAN** (see my article last issue) and **GHOSTBUSTERS III**) suggest that he hasn't too many worries. Two minutes of these bloodies were cut from **HELLRAISER II**, and Clive seems subconsciously aware that his movie-making must mature, or at least change. "I've never thought it was that important to advance," he says, "but it is important to change, to do something different all the time."

Emphasis this time around is very much on characterisation, particularly of the fear lead roles: Boone, his girlfriend Lori, Decker and the Sheriff. "It is scary, but its major scares come from genuinely caring about the people who are involved in that situation. I don't think the audience is gonna come out of this movie feeling detached about the characters, in the same way that they were detached from the **HELLRAISER** characters. **HELLRAISER** was a very cold picture; you couldn't really care for the characters." I ask him if working with David Cronenberg led Clive's own vision of the movie, but he demurs. **NIGHTBREED**, he says it is not Cronenberg's style. "His vision is much grimmer than anything in this picture, and although this is a dark picture in some respects, it is dark in a completely different way to the way he is dark. But it was wonderful to have him in the picture, partly because he is a hero of mine and partly because it was his first chance to do this. It's a massive role, and I think it comes across on the screen."





The latest news on the movie is that another six weeks\* of filming is to begin at Pinewood, with Ralph McQuarrie (who designed much of the alien fauna of the STAR WARS movies) overseeing the ranks of the NIGHTBREED. More monsters are lined up, although a rumoured three-hour rough-cut has yet to be edited down to a more manageable two hours' worth, and although scheduled for release at Christmas of this year, the UK release is now to be nearer next Summer. In the meantime, Barker addicts can read his new bestseller THE GREAT AND SECRET SHOW (the first of The Art trilogy) and look forward to the sequel to CABAL, which, Clive says, will probably be turned into the NIGHTBREED sequel. HELLRAISER II screenwriter Peter Atkins' script for HELLRAISER III has been accepted, and Clive is already looking at a screenplay for another of his stories, this time SON OF CELLULOID, which appeared in both the BOOKS OF BLOOD and my own magazine, SKELETON CREW.

For Clive Barker, obviously, darkness is not an obstacle, but big business, the tapping of which is clearly his Art.

## NIGHTBREED - THE GAME

Clive Barker's new film *Nightbreed* is to be produced by film license supremo, Ocean Software. This can only be judged as another brilliant marketing move by the company responsible for the *Batman* comic game (another superb license deal).

The game is to follow the plot of the film very closely (as contacts have told me of

which Ocean is a world expert, due to the fact that its Public Relations manager was asked to make his screen debut as one of the *Nightbreed*).

Apparently, Clive Barker himself had a reasonable input into the game design, thus making it very accurate on the detail side.

We have also been informed that it is to be more of an arcade game than anything

else.

As already explained in the main feature (what do you mean you haven't read it yet?), the plot of the film involves a character named Boone, who has been wrongly adjudged to have murdered somebody. Thus he goes on the run.

Unfortunately he runs too far, into the city of Millan - a land full of various nasties, the *Night-*

breed. Here he starts to change himself, into one of the said creatures, and then it gets juicy.

Now that the movie has been rescheduled for an February release, the game has followed suit. It will be available on the Amiga and C64, and you can bet that it'll be every bit as horrific as its cinematic counterpart.

Kit Henderson.



"Ocean software's Gary Bracey has already been roped in to play one of them (the Nightbreed)..."



## ■ 128 CORNER

Dear 128 Corner,

Congratulations on the new C128 Corner. The article is a great idea, I hope it is a success. Here are a few hints and tips for you.

For a secret message from your 128 enter: 5Y522886, 113, 45,6

POKE4784, @ POKE854788, 258 will increase the size of characters on 80 col. screen (may not work on all versions of 128).

1281 partitions can be accessed from *Poweruser 128* by sending the disk command: /partition name.

When using *Micro Clerk 128*, pop-up menus can be moved around the screen using the TAB key.

Graphics created on *CADPAK 128*'s second screen can be used with *Poweruser* by loading them into the converter as a hi-res picture.

I hope that these will be of some use to you.

P. Traynor, Warrington, Cheshire.

Dear 128 Corner

I am looking forward to reading articles about the C128 in the new 128 Corner. The following questions may be of interest to other readers, in addition to myself.

What *Vista* Software is available for the C128 for Word Processing, Database and Spreadsheets.

What officially does CP/M stand for. And what range of software can one use and is available.

Is it possible to switch from the C64 mode to the C128 mode and vice versa with a cartridge installed without damaging your computer.

I look forward to your reply in the pages of YC.

J. Bradley, Lanarkshire, Scotland.

Two *Vista* products were launched for the C128. The first of these was *Vista Classic*, a very powerful wordprocessor and a favourite in the office. The second program is *Vista Star*. This program offers both database and spreadsheet functions, while not as pretty or friendly as *Vista Classic* it is still a very powerful program. Try *Financial Systems Software* if you are trying to track these down.

CP/M stands for Control Program for Microcomputers. Basically it was the first runner-up to MS-DOS and the version of CP/M found on many IBM compatible CP/M allowed programs - without do be run on a variety of computers.

There is a large number of CP/M software available - mostly professional/business applications, unfortunately there is too much to list here.

If you want to investigate CP/M software further we suggest you take a look at the CP/M Kit and the CP/M Users guide. Both of these are available from *Financial Systems Software*.

You could also try contacting the CP/M Users Group at: 71 Hill Road, Dunfermline D14 7RE.

Most cartridges are designed for the Commodore 64 computer and will not allow you to access the C128 while they are plugged in, they will allow you to access the C64. The only cartridge that we are aware works in C128 mode is the *Warp Speed* one. Ask your dealer everything else is available from *Financial Systems Software*. Switching between C64 and C128 mode while a cartridge is plugged in, if the cartridge allows it, isn't viable in problems.

Dear 128 Corner

I like the C128 pages in YC. Could you mention in them that the *Word Perfect* version of *Supersoft's World Style*, formerly called *Word Perfect*, has now been modified to correctly underline when used with *Commodore's* own dot-matrix printers, DPS1101. I solved the problem for them, and they sent me a very nice gift in return. *Word Style* works in either 40 or 80 columns. It has two work areas, between which text can be transferred. An easy to use, very basic word processor, it's good value for £20. Anyone with C64 or Plus4 *Word Perfect* files can load them straight in to *Word Style 128*.

P. Simmonds, Skeltonthorpe, Buckthorpe

Thanks for you letter, and the free plug for yourself. Hope that your comments will prove beneficial to some users out there.

Put pen to paper and tell us your news, views and groans

# 128 CORNER

# COMSOFT

(Coldstream) Ltd.



SUPPLIERS OF HARDWARE AND SOFTWARE FOR THE AMSTRAD PC-PRO-DPC PCOS, COMMODORE SPECTRUM, ATARI, ATARI ST, MSX, ELECTRON APPUS SERIES 2, APPLE MACINTOSH COMPUTERS.

WE STOCK A VARIED SELECTION OF WORD PROCESSORS, DATA BASES, SPREAD SHEETS & ACCOUNTANCY PACKAGES, AND MANY OTHER ITEMS OF BUSINESS & LEISURE SOFTWARE ALL AT DISCOUNT PRICES.

**48 Duke Street,  
Coldstream, Scotland, TD12 4LF**

Suppliers of Software and Hardware to government and Local Authorities

TELEPHONE No. 0890 3032

FAX No. 0890 2927

SEND FOR OUR PRICE CATALOGUE

# I.C.P.U.G

the Independent  
Commodore Products Users Group  
is the largest and most friendly  
computer club in the country

Last issue of 1989 available to non-members at well as members, at £2.00 each, postage paid.

- Many local groups with regular meetings
- News magazine included in membership - 100 plus pages of reviews, news and information every two months.
- We support all Commodore Machines old and new, PET, VIC20, 64, 16, -4, PC, 128 and all Amigas.
- Free Software Library of public domain programs for all the above machines available to members on supply of blank disk or tape and payment of p.p.g. New members, do not send for this until membership number is received.
- Help and Advice
- Discount scheme
- Subscription only £15 per year (UK) plus £1 joining fee (overseas rates on application)

If you are seriously interested in using or programming any Commodore computer, then joining ICPUG is a must!

For full details, send a stamped, addressed envelope to:



ICPUG Membership Secretary, Jack C. Cohen,  
30, Brammer Road, Newburg Park,  
Ward, Essex, IG2 7EP

## Binders

Organise and protect your disk with  
Commodore Disk User disk binders and  
data disks.

Why not keep your Commodore Disk User program collection alongside your magazines in a stylish Disk User disk binder? The binder comes complete with 10 disk sleeves to organise and protect your program disks. Why not buy a disk binder to house all of your data disks? We can even supply Commodore Disk User data disks. The Commodore Disk User logo immediately identifies your disks and there's room to title them and document the disk details. Send for your disks and binders now!

Prices are as follows:

Commodore Disk User Binder (4.95, including 10 sleeves. Order code **BDYU1**)

Commodore Disk User Binder with 10 sleeves and 10 disks, £9.95 Order code **BDYUC**

10 sleeves for insertion in binder, £1.50. Order code **BD5H**

30 sleeves for inclusion in binder, £1.75. Order code **BD5B**

10 Commodore Disk User data disks, £1.95. Order code **BD00**

All orders should be sent to: YOUR COMMODORE, READERS SERVICES, ARGUS SPECIALIST PUBLICATIONS, ARGUS HOUSE, BOUNDARY WAY, HEMEL HEMPSTEAD HP5 7ST. Please allow 28 days for delivery.



PRODUCT NAME	ORDER CODE	QUANTITY	PRICE
Overseas postage add £1.00			
			TOTAL





also the latest news, sports results and stock market prices. This becomes particularly useful if you're planning on using programs such as pools predictors, as a utility is supplied to read the scores buffer and will allow you to use the information in your own programs.

### Hard Facts

#### Disk drives

Unless you're a glutton for punishment, or you actually enjoy long loading times, you'll need to invest in a disk drive. There are a number on the market, including Commodore's own. One of the best buys is Evesham Microw Oceanic drive which is a similar drive, is fully compatible with Commodore's and comes free with GEOS. Expect to pay about £130 for a drive but look out for special offers.

#### Printer

A good printer is essential if you want to get the most out of applications such as word processing and desktop publishing. These range from low cost Epson, Star and Monoman Tally dot matrix printers to laser technology. The Star LC-10 C is particularly fun as it is not only a good black and white work horse it can also print out full colour images created by art packages.

#### Graphics tablet

If you're really serious about CGA graphics and you've tried and dismissed joysticks and mice as electronic paintbrushes then why not invest in a graphics tablet. These are ideal for tracing in outlines of objects and pictures into a package and also make working with fine detail a lot easier. If you want the best then look out for the Koala Pad as it's supported by most art packages.

#### Teletext Adapter

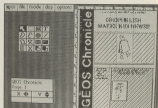
Microtext produce a very reasonable teletext adapter that can either use a video recorder or tuner (supplied extra) and plugs into the CGA's user port. It has a cable that connects to the video out socket of the video recorder and can even be in a different room.

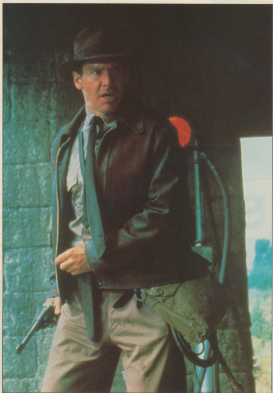
# S SOFTWARE



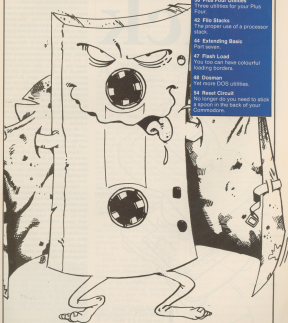
Mouse and left: GEOS, a system for every use.

*"Stop Press, from Database, is supplied complete with a three button mouse..."*





# YOUR PROGRAMMER



## CONTENTS

- 12 Give it Some Stick**  
The ins and outs of a joystick
- 14 Reasoning on the 128**  
Turn your 128 into an expert system.
- 18 Plus Four Utilities**  
Three utilities for your Plus Four.
- 42 File Stacks**  
The proper use of a processor stack.
- 44 Extending Basic**  
Part seven.
- 47 Flash Load**  
You too can have colourful loading borders.
- 48 Doeman**  
Yet more DOS utilities.
- 54 Reset Circuit**  
No longer do you need to stick a spoon in the back of your Commodore.

# Give it some stick

*Just how does a joystick work? How do you use it in your own programs? Read on and find out*

games that do not require control from such a device, but, for the shoot-'em-up game there is just no substitute. But how do they work?

We all know what a joystick looks like: basically it will have a stick with a fire button or buttons, a base, a lead and maybe an auto-fire switch.

Inside the joystick beneath the stick there are four switches for up, down, left and right directions. The better joysticks use microswitches which make a definite click when you move the stick. The cheaper ones use a four pointed star made out of thin tensile steel. Moving the stick causes a point of the star to come into contact with a pad on the printed circuit board inside the joystick. The trouble with these is that after prolonged use the star begins to show signs of fatigue and eventually a point of the star will break off making it impossible to move in one of the directions.

If we take a look at the schematic in diagram 1 of our typical joystick, we can see how the components are electrically connected to make up with a device.

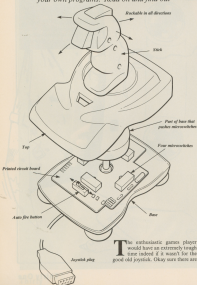
As you can see there are seven connections to the joystick plug. These are up, down, right, left, fire, ground and +5 volts dc.

Each position switch will be activated by moving the stick in one of four directions. You can also trigger one switches by moving the stick diagonally, for example in a southwest direction.

Now the computer program will be trying to determine the status of these latter switches and hence the position into which you have pushed the stick, but you can't just plug the joystick in any old where. It needs to be plugged into special interfacing circuitry via a joystick port.

Most computers have a joystick port appearing at some convenient position on its case. Some require a joystick interface that plugs into the computer's edge connector which has the processor's data and address bus running to it. This interface will do the decoding necessary to convert the movement of the joystick into the data signals that the program will need in order to work out which position the joystick is in. If the joystick port is built in to the computer, then it will have such an interface already inside it.

The interface or circuitry inside the computer will look something like



**T**he enthusiastic games player would have an extremely tough time indeed if it wasn't for the good old joystick. Okay sure there are



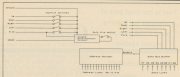
diagram 2. We have the address decoding chip and a data bus buffer. The address decoder is needed to read the status of the switches in the joystick at specific times, that is, when a specific unique address exists on the address bus and at no other time. If we did not do this then we would have all sorts of unweildy data on the data bus, which would cause the computer to lock up.

When this unique address comes along it will force the decoder to issue an enable signal to the data buffer. This buffer will then put the status of the joystick switches onto the data bus of the computer circuitry ready for the program to read and act upon.

Let us imagine that you have moved the stick to the up position. This will cause the signal on the up line to go low (to ground). When the data buffer is enabled this will cause the output on D0 to go low, or in other words to be set to zero. The data bus would then have a binary value of 1111100 (decimal 124). The program would look at this value and know that the up position has been selected. Similarly if we push the stick to the right then we would have a binary value of 1111011. If we select a northeast position, this means that switches up and right will be active which will put a binary value of 1111000 on the data bus. Likewise pressing the fire button will cause D6 to go low thus obtaining 1100111. Get the idea?

The program will then, at very frequent intervals possibly during an interrupt routine, be working out the status of all the joystick switches and taking the appropriate action upon its data bus findings.

As mentioned earlier, some joysticks have an auto fire switch. This brings in to play a simple multivibrator circuit which issues a continuous series of pulses at about 50 per second (each pulse mimicking the fire button). This is basically a luxury for those people



playing a game that requires a lot of firing, thus saving your fingers from having to press the fire button all the time. The multivibrator uses the +5Vdc line for its power.

Well that's about all there is on

**A**s you are aware, the Commodore family of computers each have two controller ports, numbered one and two. Normally, these controller ports are used for reading the joystick or mouse when playing games. With a little imagination on your part, you can use these ports for gaining input from the user, instead of the normal keyboard method.

Each joystick has five switches, one for the fire button, and four for direction. These switches correspond to the lower 5 bits of data held in the joystick location. By poking these locations, we can decide what action to take, depending on the values returned. Always remember, a value of 1 signifies that either a direction was NOT chosen, or the fire button was NOT pressed.

The table shows the values returned for each direction. A value of more than 128 indicates that the fire button was pressed at the same time.

Reading the ports is a simple job, and on the Plus/4 and C128 it is made even easier by the use of the JOY command. CH4 users however, have to do a little more work (Don't they always?)

Below you will see two BASIC listings for determining the state of the joystick. I have purposely kept the listings on a very simple level. The point of this test is not to show you programming skills or techniques, it is simply to show you how to read joystick information.

The first listing can be used by both Plus/4 and C128 users. The second is for CH4 users.

joysticks. Once you've seen one you've basically seen them all, except that some are designed better for prolonged use and comfort and some are designed better for fast action. It really is a personal choice, so try before you buy.

```

JOYSTICK TEST
1000 REM *****
1010 REM 2014 2015 2016 2017
1020 REM 2018 2019 2020 2021
1030 REM 2022 2023 2024 2025
1040 REM 2026 2027 2028 2029
1050 REM 2030 2031 2032 2033
1060 REM 2034 2035 2036 2037
1070 REM 2038 2039 2040 2041
1080 REM 2042 2043 2044 2045
1090 REM 2046 2047 2048 2049
1100 REM 2050 2051 2052 2053
1110 REM 2054 2055 2056 2057
1120 REM 2058 2059 2060 2061
1130 REM 2062 2063 2064 2065
1140 REM 2066 2067 2068 2069
1150 REM 2070 2071 2072 2073
1160 REM 2074 2075 2076 2077
1170 REM 2078 2079 2080 2081
1180 REM 2082 2083 2084 2085
1190 REM 2086 2087 2088 2089
1200 REM 2090 2091 2092 2093
1210 REM 2094 2095 2096 2097
1220 REM 2098 2099 2100 2101
1230 REM 2102 2103 2104 2105
1240 REM 2106 2107 2108 2109
1250 REM 2110 2111 2112 2113
1260 REM 2114 2115 2116 2117
1270 REM 2118 2119 2120 2121
1280 REM 2122 2123 2124 2125
1290 REM 2126 2127 2128 2129
1300 REM 2130 2131 2132 2133
1310 REM 2134 2135 2136 2137
1320 REM 2138 2139 2140 2141
1330 REM 2142 2143 2144 2145
1340 REM 2146 2147 2148 2149
1350 REM 2150 2151 2152 2153
1360 REM 2154 2155 2156 2157
1370 REM 2158 2159 2160 2161
1380 REM 2162 2163 2164 2165
1390 REM 2166 2167 2168 2169
1400 REM 2170 2171 2172 2173
1410 REM 2174 2175 2176 2177
1420 REM 2178 2179 2180 2181
1430 REM 2182 2183 2184 2185
1440 REM 2186 2187 2188 2189
1450 REM 2190 2191 2192 2193
1460 REM 2194 2195 2196 2197
1470 REM 2198 2199 2200 2201
1480 REM 2202 2203 2204 2205
1490 REM 2206 2207 2208 2209
1500 REM 2210 2211 2212 2213
1510 REM 2214 2215 2216 2217
1520 REM 2218 2219 2220 2221
1530 REM 2222 2223 2224 2225
1540 REM 2226 2227 2228 2229
1550 REM 2230 2231 2232 2233
1560 REM 2234 2235 2236 2237
1570 REM 2238 2239 2240 2241
1580 REM 2242 2243 2244 2245
1590 REM 2246 2247 2248 2249
1600 REM 2250 2251 2252 2253
1610 REM 2254 2255 2256 2257
1620 REM 2258 2259 2260 2261
1630 REM 2262 2263 2264 2265
1640 REM 2266 2267 2268 2269
1650 REM 2270 2271 2272 2273
1660 REM 2274 2275 2276 2277
1670 REM 2278 2279 2280 2281
1680 REM 2282 2283 2284 2285
1690 REM 2286 2287 2288 2289
1700 REM 2290 2291 2292 2293
1710 REM 2294 2295 2296 2297
1720 REM 2298 2299 2300 2301
1730 REM 2302 2303 2304 2305
1740 REM 2306 2307 2308 2309
1750 REM 2310 2311 2312 2313
1760 REM 2314 2315 2316 2317
1770 REM 2318 2319 2320 2321
1780 REM 2322 2323 2324 2325
1790 REM 2326 2327 2328 2329
1800 REM 2330 2331 2332 2333
1810 REM 2334 2335 2336 2337
1820 REM 2338 2339 2340 2341
1830 REM 2342 2343 2344 2345
1840 REM 2346 2347 2348 2349
1850 REM 2350 2351 2352 2353
1860 REM 2354 2355 2356 2357
1870 REM 2358 2359 2360 2361
1880 REM 2362 2363 2364 2365
1890 REM 2366 2367 2368 2369
1900 REM 2370 2371 2372 2373
1910 REM 2374 2375 2376 2377
1920 REM 2378 2379 2380 2381
1930 REM 2382 2383 2384 2385
1940 REM 2386 2387 2388 2389
1950 REM 2390 2391 2392 2393
1960 REM 2394 2395 2396 2397
1970 REM 2398 2399 2400 2401
1980 REM 2402 2403 2404 2405
1990 REM 2406 2407 2408 2409
2000 REM 2410 2411 2412 2413
2010 REM 2414 2415 2416 2417
2020 REM 2418 2419 2420 2421
2030 REM 2422 2423 2424 2425
2040 REM 2426 2427 2428 2429
2050 REM 2430 2431 2432 2433
2060 REM 2434 2435 2436 2437
2070 REM 2438 2439 2440 2441
2080 REM 2442 2443 2444 2445
2090 REM 2446 2447 2448 2449
2100 REM 2450 2451 2452 2453
2110 REM 2454 2455 2456 2457
2120 REM 2458 2459 2460 2461
2130 REM 2462 2463 2464 2465
2140 REM 2466 2467 2468 2469
2150 REM 2470 2471 2472 2473
2160 REM 2474 2475 2476 2477
2170 REM 2478 2479 2480 2481
2180 REM 2482 2483 2484 2485
2190 REM 2486 2487 2488 2489
2200 REM 2490 2491 2492 2493
2210 REM 2494 2495 2496 2497
2220 REM 2498 2499 2500 2501
2230 REM 2502 2503 2504 2505
2240 REM 2506 2507 2508 2509
2250 REM 2510 2511 2512 2513
2260 REM 2514 2515 2516 2517
2270 REM 2518 2519 2520 2521
2280 REM 2522 2523 2524 2525
2290 REM 2526 2527 2528 2529
2300 REM 2530 2531 2532 2533
2310 REM 2534 2535 2536 2537
2320 REM 2538 2539 2540 2541
2330 REM 2542 2543 2544 2545
2340 REM 2546 2547 2548 2549
2350 REM 2550 2551 2552 2553
2360 REM 2554 2555 2556 2557
2370 REM 2558 2559 2560 2561
2380 REM 2562 2563 2564 2565
2390 REM 2566 2567 2568 2569
2400 REM 2570 2571 2572 2573
2410 REM 2574 2575 2576 2577
2420 REM 2578 2579 2580 2581
2430 REM 2582 2583 2584 2585
2440 REM 2586 2587 2588 2589
2450 REM 2590 2591 2592 2593
2460 REM 2594 2595 2596 2597
2470 REM 2598 2599 2600 2601
2480 REM 2602 2603 2604 2605
2490 REM 2606 2607 2608 2609
2500 REM 2610 2611 2612 2613
2510 REM 2614 2615 2616 2617
2520 REM 2618 2619 2620 2621
2530 REM 2622 2623 2624 2625
2540 REM 2626 2627 2628 2629
2550 REM 2630 2631 2632 2633
2560 REM 2634 2635 2636 2637
2570 REM 2638 2639 2640 2641
2580 REM 2642 2643 2644 2645
2590 REM 2646 2647 2648 2649
2600 REM 2650 2651 2652 2653
2610 REM 2654 2655 2656 2657
2620 REM 2658 2659 2660 2661
2630 REM 2662 2663 2664 2665
2640 REM 2666 2667 2668 2669
2650 REM 2670 2671 2672 2673
2660 REM 2674 2675 2676 2677
2670 REM 2678 2679 2680 2681
2680 REM 2682 2683 2684 2685
2690 REM 2686 2687 2688 2689
2700 REM 2690 2691 2692 2693
2710 REM 2694 2695 2696 2697
2720 REM 2698 2699 2700 2701
2730 REM 2702 2703 2704 2705
2740 REM 2706 2707 2708 2709
2750 REM 2710 2711 2712 2713
2760 REM 2714 2715 2716 2717
2770 REM 2718 2719 2720 2721
2780 REM 2722 2723 2724 2725
2790 REM 2726 2727 2728 2729
2800 REM 2730 2731 2732 2733
2810 REM 2734 2735 2736 2737
2820 REM 2738 2739 2740 2741
2830 REM 2742 2743 2744 2745
2840 REM 2746 2747 2748 2749
2850 REM 2750 2751 2752 2753
2860 REM 2754 2755 2756 2757
2870 REM 2758 2759 2760 2761
2880 REM 2762 2763 2764 2765
2890 REM 2766 2767 2768 2769
2900 REM 2770 2771 2772 2773
2910 REM 2774 2775 2776 2777
2920 REM 2778 2779 2780 2781
2930 REM 2782 2783 2784 2785
2940 REM 2786 2787 2788 2789
2950 REM 2790 2791 2792 2793
2960 REM 2794 2795 2796 2797
2970 REM 2798 2799 2800 2801
2980 REM 2802 2803 2804 2805
2990 REM 2806 2807 2808 2809
3000 REM 2810 2811 2812 2813
3010 REM 2814 2815 2816 2817
3020 REM 2818 2819 2820 2821
3030 REM 2822 2823 2824 2825
3040 REM 2826 2827 2828 2829
3050 REM 2830 2831 2832 2833
3060 REM 2834 2835 2836 2837
3070 REM 2838 2839 2840 2841
3080 REM 2842 2843 2844 2845
3090 REM 2846 2847 2848 2849
3100 REM 2850 2851 2852 2853
3110 REM 2854 2855 2856 2857
3120 REM 2858 2859 2860 2861
3130 REM 2862 2863 2864 2865
3140 REM 2866 2867 2868 2869
3150 REM 2870 2871 2872 2873
3160 REM 2874 2875 2876 2877
3170 REM 2878 2879 2880 2881
3180 REM 2882 2883 2884 2885
3190 REM 2886 2887 2888 2889
3200 REM 2890 2891 2892 2893
3210 REM 2894 2895 2896 2897
3220 REM 2898 2899 2900 2901
3230 REM 2902 2903 2904 2905
3240 REM 2906 2907 2908 2909
3250 REM 2910 2911 2912 2913
3260 REM 2914 2915 2916 2917
3270 REM 2918 2919 2920 2921
3280 REM 2922 2923 2924 2925
3290 REM 2926 2927 2928 2929
3300 REM 2930 2931 2932 2933
3310 REM 2934 2935 2936 2937
3320 REM 2938 2939 2940 2941
3330 REM 2942 2943 2944 2945
3340 REM 2946 2947 2948 2949
3350 REM 2950 2951 2952 2953
3360 REM 2954 2955 2956 2957
3370 REM 2958 2959 2960 2961
3380 REM 2962 2963 2964 2965
3390 REM 2966 2967 2968 2969
3400 REM 2970 2971 2972 2973
3410 REM 2974 2975 2976 2977
3420 REM 2978 2979 2980 2981
3430 REM 2982 2983 2984 2985
3440 REM 2986 2987 2988 2989
3450 REM 2990 2991 2992 2993
3460 REM 2994 2995 2996 2997
3470 REM 2998 2999 3000 3001
3480 REM 3002 3003 3004 3005
3490 REM 3006 3007 3008 3009
3500 REM 3010 3011 3012 3013
3510 REM 3014 3015 3016 3017
3520 REM 3018 3019 3020 3021
3530 REM 3022 3023 3024 3025
3540 REM 3026 3027 3028 3029
3550 REM 3030 3031 3032 3033
3560 REM 3034 3035 3036 3037
3570 REM 3038 3039 3040 3041
3580 REM 3042 3043 3044 3045
3590 REM 3046 3047 3048 3049
3600 REM 3050 3051 3052 3053
3610 REM 3054 3055 3056 3057
3620 REM 3058 3059 3060 3061
3630 REM 3062 3063 3064 3065
3640 REM 3066 3067 3068 3069
3650 REM 3070 3071 3072 3073
3660 REM 3074 3075 3076 3077
3670 REM 3078 3079 3080 3081
3680 REM 3082 3083 3084 3085
3690 REM 3086 3087 3088 3089
3700 REM 3090 3091 3092 3093
3710 REM 3094 3095 3096 3097
3720 REM 3098 3099 3100 3101
3730 REM 3102 3103 3104 3105
3740 REM 3106 3107 3108 3109
3750 REM 3110 3111 3112 3113
3760 REM 3114 3115 3116 3117
3770 REM 3118 3119 3120 3121
3780 REM 3122 3123 3124 3125
3790 REM 3126 3127 3128 3129
3800 REM 3130 3131 3132 3133
3810 REM 3134 3135 3136 3137
3820 REM 3138 3139 3140 3141
3830 REM 3142 3143 3144 3145
3840 REM 3146 3147 3148 3149
3850 REM 3150 3151 3152 3153
3860 REM 3154 3155 3156 3157
3870 REM 3158 3159 3160 3161
3880 REM 3162 3163 3164 3165
3890 REM 3166 3167 3168 3169
3900 REM 3170 3171 3172 3173
3910 REM 3174 3175 3176 3177
3920 REM 3178 3179 3180 3181
3930 REM 3182 3183 3184 3185
3940 REM 3186 3187 3188 3189
3950 REM 3190 3191 3192 3193
3960 REM 3194 3195 3196 3197
3970 REM 3198 3199 3200 3201
3980 REM 3202 3203 3204 3205
3990 REM 3206 3207 3208 3209
4000 REM 3210 3211 3212 3213
4010 REM 3214 3215 3216 3217
4020 REM 3218 3219 3220 3221
4030 REM 3222 3223 3224 3225
4040 REM 3226 3227 3228 3229
4050 REM 3230 3231 3232 3233
4060 REM 3234 3235 3236 3237
4070 REM 3238 3239 3240 3241
4080 REM 3242 3243 3244 3245
4090 REM 3246 3247 3248 3249
4100 REM 3250 3251 3252 3253
4110 REM 3254 3255 3256 3257
4120 REM 3258 3259 3260 3261
4130 REM 3262 3263 3264 3265
4140 REM 3266 3267 3268 3269
4150 REM 3270 3271 3272 3273
4160 REM 3274 3275 3276 3277
4170 REM 3278 3279 3280 3281
4180 REM 3282 3283 3284 3285
4190 REM 3286 3287 3288 3289
4200 REM 3290 3291 3292 3293
4210 REM 3294 3295 3296 3297
4220 REM 3298 3299 3300 3301
4230 REM 3302 3303 3304 3305
4240 REM 3306 3307 3308 3309
4250 REM 3310 3311 3312 3313
4260 REM 3314 3315 3316 3317
4270 REM 3318 3319 3320 3321
4280 REM 3322 3323 3324 3325
4290 REM 3326 3327 3328 3329
4300 REM 3330 3331 3332 3333
4310 REM 3334 3335 3336 3337
4320 REM 3338 3339 3340 3341
4330 REM 3342 3343 3344 3345
4340 REM 3346 3347 3348 3349
4350 REM 3350 3351 3352 3353
4360 REM 3354 3355 3356 3357
4370 REM 3358 3359 3360 3361
4380 REM 3362 3363 3364 3365
4390 REM 3366 3367 3368 3369
4400 REM 3370 3371 3372 3373
4410 REM 3374 3375 3376 3377
4420 REM 3378 3379 3380 3381
4430 REM 3382 3383 3384 3385
4440 REM 3386 3387 3388 3389
4450 REM 3390 3391 3392 3393
4460 REM 3394 3395 3396 3397
4470 REM 3398 3399 3400 3401
4480 REM 3402 3403 3404 3405
4490 REM 3406 3407 3408 3409
4500 REM 3410 3411 3412 3413
4510 REM 3414 3415 3416 3417
4520 REM 3418 3419 3420 3421
4530 REM 3422 3423 3424 3425
4540 REM 3426 3427 3428 3429
4550 REM 3430 3431 3432 3433
4560 REM 3434 3435 3436 3437
4570 REM 3438 3439 3440 3441
4580 REM 3442 3443 3444 3445
4590 REM 3446 3447 3448 3449
4600 REM 3450 3451 3452 3453
4610 REM 3454 3455 3456 3457
4620 REM 3458 3459 3460 3461
4630 REM 3462 3463 3464 3465
4640 REM 3466 3467 3468 3469
4650 REM 3470 3471 3472 3473
4660 REM 3474 3475 3476 3477
4670 REM 3478 3479 3480 3481
4680 REM 3482 3483 3484 3485
4690 REM 3486 3487 3488 3489
4700 REM 3490 3491 3492 3493
4710 REM 3494 3495 3496 3497
4720 REM 3498 3499 3500 3501
4730 REM 3502 3503 3504 3505
4740 REM 3506 3507 3508 3509
4750 REM 3510 3511 3512 3513
4760 REM 3514 3515 3516 3517
4770 REM 3518 3519 3520 3521
4780 REM 3522 3523 3524 3525
4790 REM 3526 3527 3528 3529
4800 REM 3530 3531 3532 3533
4810 REM 3534 3535 3536 3537
4820 REM 3538 3539 3540 3541
4830 REM 3542 3543 3544 3545
4840 REM 3546 3547 3548 3549
4850 REM 3550 3551 3552 3553
4860 REM 3554 3555 3556 3557
4870 REM 3558 3559 3560 3561
4880 REM 3562 3563 3564 3565
4890 REM 3566 3567 3568 3569
4900 REM 3570 3571 3572 3573
4910 REM 3574 3575 3576 3577
4920 REM 3578 3579 3580 3581
4930 REM 3582 3583 3584 3585
4940 REM 3586 3587 3588 3589
4950 REM 3590 3591 3592 3593
4960 REM 3594 3595 3596 3597
4970 REM 3598 3599 3600 3601
4980 REM 3602 3603 3604 3605
4990 REM 3606 3607 3608 3609
5000 REM 3610 3611 3612 3613
5010 REM 3614 3615 3616 3617
5020 REM 3618 3619 3620 3621
5030 REM 3622 3623 3624 3625
5040 REM 3626 3627 3628 3629
5050 REM 3630 3631 3632 3633
5060 REM 3634 3635 3636 3637
5070 REM 3638 3639 3640 3641
5080 REM 3642 3643 3644 3645
5090 REM 3646 3647 3648 3649
5100 REM 3650 3651 3652 3653
5110 REM 3654 3655 3656 3657
5120 REM 3658 3659 3660 3661
5130 REM 3662 3663 3664 3665
5140 REM 3666 3667 3668 3669
5150 REM 3670 3671 3
```

This is the final part of our series for turning your C128 into an expert system

By Paul Schofield

Over the last two months, we have been providing you with the means for turning your C128 into a mini-expert system. The first two sections dealt with the knowledge base and language generator.

**INQUIRE** is the last of the three programs making up our expert system shell. Once your expert system has been fully coded, **INQUIRE** is the only program needed to interrogate the knowledge base and evaluate the user responses. The operation is fairly self-explanatory, but some knowledge of the program's operation is useful for designing and testing your applications.

On starting the program you are first required to identify the knowledge base to be used. Once this has been done the target texts, condition texts, relation rules and implication rules are loaded into a set of arrays. The master array is the relation rules array, which defines the operations to be performed and includes the necessary references for extracting information from the other data structures.

Before questioning the user, the program first displays any help texts defined in the knowledge base giving background information on the topics of the knowledge base etc. If this is longer than a single page, it is displayed a page at a time and the user indicates when their next page is to be displayed.

After this is standard help text on answering questions is displayed. For each condition, it is permissible to answer (True, False or I don't know).

The program then retrieves the relation rules associated with the entry for target 1. It scans each condition for the target and unless the condition is irrelevant for this rule, the user is asked to answer the condition question. The answer is saved and evaluated to determine whether it is the required result for the target. If it is, the program continues with this target, otherwise it marks the reason for abandoning the target and continues with the next target. There are two reasons why a target may be abandoned, either it is rejected, because a part of a condition has the wrong value or it is simply abandoned because of a don't know response. It is important to note that a don't know does not rule out a target, it is simply ignored during the first pass, so there is, maybe a solution that does not depend on the result of the particular condition.

After each condition is checked a further check is performed to see if any other conditions are implied by the results and the appropriate results for these conditions set. This means that as the inference engine proceeds through the scan of targets and conditions, it finds it already has the answers to an increasingly large number of conditions and so does not have to ask the user.

Hopefully, if Don't Know answers have not been given, a relative rule for a target will be satisfied. At this stage a subquestion is asked, which displays the possible solution and gives the user the option to exit from the program or continue searching for further solutions. A further option - (Why), is also provided.

### Why?

The why option allows you to request a justification for the solution. What it does is back track through the targets and significant conditions processed to date and explain the actions it took. This is extremely useful for debugging a knowledge base and is also useful to the end user who wishes to examine the reasoning used to reach the solution. Where the expert system is used for categorizing and a new category has to be introduced this can give a useful clue to the new condition required and which targets are affected.

### No (More) Solutions

Alternatively, a More response after a solution or a number of Don't Know responses can cause the inference engine to exhaust the list of targets. At this stage the user is informed that no or no more solutions could be found. The option to try again is given if any don't know answers were given. This causes a complete re-assessment of the data to be performed. This time the don't know response only affects the current rule, so that if the same unknown condition exists in several rules and no clear answer is given it will be asked repeatedly. This means that the retry is very tedious and there is no point

in requesting this unless at least some don't know conditions are going to be answered.

## Applications

Having already typed in three programs, it may seem a little late to be asking what use is our expert system shell. For the home user, however, expert system applications are far from obvious, so it is quite useful to consider a few areas of potential use and also some considerations for constructing a useful knowledge base.

One very obvious application for the home computer user is a program design aid. Indeed I originally developed the *Interchange of the reason program* to assist in developing my *Lightage Master* program. Good billiage players, who have used the program will no doubt have noticed a slight flaw in the pegging strategy with certain types of hand. This is a result of posing the question "what card maximizes the scoring possibilities?". A more correct approach would have been to ask "which is the least disadvantageous card to play?" In most cases the answer is the same and once the algorithms were coded and problems noticed, it would have required a major rewrite to correct a minor short coming.

Presenting the strategy in RAL format is very much simpler and quickly highlights overights.

General categorization applications are also easily handled, as are guides to procedures, such as an extended version of the chemical analysis example or the inevitable car maintenance. Some care is required in the latter of these uses as the order of both the targets and conditions can be quite critical to the usefulness of the system produced. The reason program can be quite helpful in sorting out some of these problems. In some specialized applications, it could prove to be a problem that both targets and conditions have to be expanded in terms of test strings. A typical example is a solution, that is built up as a result of several rules being true. This tends to be a problem of many general purpose expert system shells, as what is really required is for a satisfied rule to trigger an action, which constitutes the general solution. This is, however, a disadvantage, if a single unique solution is sought. Such applications can, however, be handled by planning for multiple solutions and saving each target solution found and always continuing to look for further solutions.

One final application area that should be mentioned is education. The question and answer technique is quite a good way of illustrating to children how to approach various types of problems.

*Figure 4* illustrates a simple knowledge base for identifying mathematical shapes. This also demonstrates how to use implies to reduce the numbers of questions asked and also shows how multiple solutions can be useful. In this case looking for additional solutions will demonstrate, that a square is also a rhombus, a rectangle and a parallelogram.

## Is our expert system shell intelligent?

It is still a subject of great debate as to what constitutes Artificial Intelligence. Some would argue that all programs are intelligent, whilst others would claim that to qualify, a program must mimic human intelligence. It is primarily the function of an expert system shell to provide a sensible strategy for evaluating the rules of the users system. It's the presentation of the rules by the user, that will determine how intelligently the particular system will respond. With INQUIRE I have deliberately left as much control as possible to be convenient for the applications in which I use it. This means that the order in which both targets and conditions are defined is critical to the performance of the finished system. In most applications, however, it is only the order in which the targets are examined, that is of any concern to the user and it would be preferable if the conditions were examined in the most efficient order. In other words the inference engine includes the intelligence to decide the best order to evaluate the conditions. One such strategy can easily be incorporated within INQUIRE.

After displaying the help text, call a subroutine, which scans the relations

array  $r[i]$  by condition number and computes counts of the number of targets affected by each condition. These counts are then sorted to produce an array  $p[i]$ , such that  $p[0]$  is the number of the most used condition and  $p[100]$  is the least used condition. The following changes are then needed in the main program:

```

1340 p=1: y=0
1590 do while p <= n and y=0
1595 c=pl(p)
1599 p=p+1
    
```

The only slight complication with doing this is that in computing the counts, implied conditions should also be taken into account. Otherwise it is possible that the revised evaluation strategy may prove less efficient than the original one, and that's not intelligent.

```

END P
      1 THE SHAPE HAS 3 SIDES          00 - 1 3 10
* POLYGON INCLUDES HOLE              01 - 0
* IDENTIFIED SHAPE POLYGON PART #    02 THE SHAPE HAS MORE THAN 8 SIDES  01 - 1 5
* DESCRIPTION OF THEIR CHARACTERISTICS 03 THE SHAPE HAS 4 SIDES          01 - 0
END HELP                               04 THE SHAPE HAS 5 SIDES          02 - 0
-----
TARGETS TO
  1 AN EQUILATERAL TRIANGLE          05 THE SIDES ARE ALL THE SAME LENGTH 01 - 1 2 7
  2 AN ISOSCELES TRIANGLE            06 TWO SIDES ARE THE SAME LENGTH    01 - 0
  3 A TRIANGLE                        07 ALL ANGLES ARE RIGHT ANGLES AND  01 - 1 2 6 8
    DEGREE                             DEGREE
  4 A SQUARE                          08 THE OPPOSITE SIDES ARE ALL PARALLEL 01 - 1 3 8
  5 A RECTANGLE                       09 TWO SIDES ARE PARALLEL           01 - 0
  6 A PARALLELOGRAM                   END CONDITIONS                     00 - 1 2 3 10
  7 A RHOMBUS                          10 - 0
  8 A TRAPEZOID                        RELATIONS                            11 - 1 2 8
  9 A QUADRILATERAL                   12 - 1 3 10
  10 A REGULAR POLYGON                13 - 0
  11 A PENTAGON                       14 - 1 2 10
  12 A REGULAR HEXAGON                15 - 0
  13 A HEPTAGON                       16 - 0
  14 A REGULAR OCTAGON                17 - 0
  15 A NONAGON                        18 - 0
  16 A REGULAR DECAGON                19 - 1
  17 A REGULAR DODECAGON              END RELATIONS
  18 AN OCTAGON                       20 - 0
  19 SQUARE - I DON'T KNOW THE NAMES 21 - 1 2 10 12
    POLYGONS WITH MORE THAN 8 SIDES.  22 - 0
-----
  23 SQUARE - THE SHAPE IS NOT A POLYGON. 23 - 0
END TARGETS                             24 - 1 2 10
-----
*
CONDITIONS TO
  1 THE SHAPE HAS ONLY STRAIGHT SIDES  25 - 0
  2 THE SHAPE HAS MORE THAN 8 SIDES    26 - 1 5
  3 THE SHAPE HAS 8 SIDES              27 - 0
    END DUPLEX
    
```



# Plus/4 Utilities

We present three basic  
but very useful utilities  
for the Plus/4 and C16.

By D. Glass

One thing that every Plus/4 owner knows, is that we are constantly being ignored by software companies and magazines. Between them, those pillars of the computer industry, are trying to squeeze us out, just as they did with poor old VIC20 users. But, thanks to magazines like *Your Commodore*, we shall overcome. I have decided to present you with 3 simple, but nevertheless, useful routines for our humble machine. The routines are *Seqread*, *1551 Read clean* and *1551 driver*.

## Seqread

This handy file routine is particularly useful to those without *Script/Plus*. The routine will read sequential ASCII files made by *Script/Plus*, *Paper Script*, *Superbase* and should read files from most word processors (including J+J, but with strange results.) As it is written in BASIC it can handle the speed of a 1551 disk drive and will display 'pages' very quickly.

## How It Works

We start at address \$1000 so that the program can be run from Basic, after setting up the screen display by changing colours and using the *LINES* routine at \$1122 to draw two lines across the top of the screen and by using the *MULTI-WRITE* sub routine at \$1308 to write *LISTA*, the program now waits for the file name to be input. As the name is entered, it is stored in the tape buffer (\$B000) until a carriage return is entered. "S.R." is then added to the file name. The program will try to open the file and checks the *STATUS WORD*. If no file is found then the program will jump to the no file routine at \$1088 and carry through to the end routine at \$108F.

If the file is found, then the *NEXT* routine (\$1085) is used to output the file contents to the screen, as it does so it will check to see if screen line 20 is empty, if not then a jump to the *PAUSE* routine at \$10CD is made. This will finish the current word by looking for a space and pause the program until an option is selected. Pausing is done by using *INTALK* and *LISTP* is output to the screen. Once a key is pressed the program will either jump to the end routine at \$108F or clear the screen, send *TALK* to the device and return to the *NEXT* routine at \$1085, so continuing to read the file until the screen fills again or the file ends.

If end is selected the program can be re-run to read another file.

## Instructions

Run the program from Basic. The program will then ask for the file you wish to read, type this in (you can use wild-cards and pattern matching.) You need not add the usual sequential codes at the end of the file name as the program will do this for you. Press return and the program will look for your file, if it does not exist then the program will inform you of this and finish, check the spelling of your file using the directory and then re-run the program. When the file is found then the contents will be displayed on the screen until the screen is nearly full, the program will then pause to allow you to finish reading the screen. Press "y" to continue or "q" to quit this file, if "y" is pressed then the screen is cleared and the program will carry on until the screen is full again or the file finishes.

Re-run the program to read another file.





# PLUS/4 PROGRAM

```

001 DATA 888,100,2,800,88,890,7,80
002 DATA 87,840,83,70,88,38,188,8
003 DATA 188,188,180,18,38,188,888
004 DATA 188,18,188,8,188,8,188,8
005
006 DATA 78,108,38,188,8,188,178,8
007
008 DATA 18,38,188,888,188,18,188
009 DATA 8,188,38,188,888,38,188,8
010
011 DATA 188,38,38,188,888,188,187
012 DATA 38,818,888,188,8,188,8,87
013 DATA 38,888,888,188,88,188,17
014 DATA 38,188,38,188,38,888,88
015
016 DATA 188,8,181,88,8,88,37,87,8
017
018 DATA 88,188,8,188,188,888,88,8
019
020 DATA 11,18,38,38,188,88,88,88,8
021
022 DATA 11,18,38,38,188,88,88,88,8
023
024 DATA 11,18,38,38,188,88,88,88,8
025
026 DATA 11,18,38,38,188,88,88,88,8
027
028 DATA 11,18,38,38,188,88,88,88,8
029
030 DATA 11,18,38,38,188,88,88,88,8
031
032 DATA 11,18,38,38,188,88,88,88,8
033
034 DATA 11,18,38,38,188,88,88,88,8
035
036 DATA 11,18,38,38,188,88,88,88,8
037
038 DATA 11,18,38,38,188,88,88,88,8
039
040 DATA 11,18,38,38,188,88,88,88,8
041
042 DATA 11,18,38,38,188,88,88,88,8
043
044 DATA 11,18,38,38,188,88,88,88,8
045
046 DATA 11,18,38,38,188,88,88,88,8
047
048 DATA 11,18,38,38,188,88,88,88,8
049
050 DATA 11,18,38,38,188,88,88,88,8
051
052 DATA 11,18,38,38,188,88,88,88,8
053
054 DATA 11,18,38,38,188,88,88,88,8
055
056 DATA 11,18,38,38,188,88,88,88,8
057
058 DATA 11,18,38,38,188,88,88,88,8
059
060 DATA 11,18,38,38,188,88,88,88,8
061
062 DATA 11,18,38,38,188,88,88,88,8
063
064 DATA 11,18,38,38,188,88,88,88,8
065
066 DATA 11,18,38,38,188,88,88,88,8
067
068 DATA 11,18,38,38,188,88,88,88,8
069
070 DATA 11,18,38,38,188,88,88,88,8
071
072 DATA 11,18,38,38,188,88,88,88,8
073
074 DATA 11,18,38,38,188,88,88,88,8
075
076 DATA 11,18,38,38,188,88,88,88,8
077
078 DATA 11,18,38,38,188,88,88,88,8
079
080 DATA 11,18,38,38,188,88,88,88,8
081
082 DATA 11,18,38,38,188,88,88,88,8
083
084 DATA 11,18,38,38,188,88,88,88,8
085
086 DATA 11,18,38,38,188,88,88,88,8
087
088 DATA 11,18,38,38,188,88,88,88,8
089
090 DATA 11,18,38,38,188,88,88,88,8
091
092 DATA 11,18,38,38,188,88,88,88,8
093
094 DATA 11,18,38,38,188,88,88,88,8
095
096 DATA 11,18,38,38,188,88,88,88,8
097
098 DATA 11,18,38,38,188,88,88,88,8
099
100 DATA 11,18,38,38,188,88,88,88,8

```



**51551 HEAD CLEAN\*,D,1000,11C9**

Where D=1 for disk or 1 for tape.  
The new program *551 HEAD-CLEAN* will be saved.

Reset the computer or if you have more than one of my routines then type **F 1000 1FFF 00 (RETURN)** to clear the work space then type **X** to return to Basic, type **NEW (RETURN)** and you are ready to load the next Basic loader.

**1551 Device**

Do you have more than one Disk Drive?

Many people do not like opening up their drives and cutting jumpers etc. in order to access the second drive.

A short, quick MC program will do this for you. It was especially written for the 1551.

**How It Works**

The start is at address 51001 so that the program can be run from Basic, after setting up the screen display by changing colours and using the "LINES" routine (51006) to draw two lines across the top of the screen and by using the *DELETE-WRITE* sub routine (51026) to write LIST4, the program now uses the keypad routine (51036) to ask for the device number required and will compare the input to "X" and "Y", if neither then a loop is made. The routine will jump to one of two routines, *EGW7* (51066) *MINI (MTA)* to select the number before passing to *OPTE* (5108B) to send the command to the drive, closing the command channel before printing *LISTC* (51151) to the screen, telling you that the number has been changed.

**Instructions**

Run the program from Basic. The program will pause and tell you to switch off all of the drives that you do NOT require changing.

Switch off and confirm this by passing either "X" or "Y" as required.  
The drive will now be changed and the program will returned to Basic.

**Getting it In**

Basic needs to be moved to 52000 before loading the Basic loader.

Type the following exactly as shown, check before pressing return.

**POKE 4432:POKE44,1:POKE1812,8:NEW (RETURN)**

This will raise Basic, giving space for the M/C. Load and run the Basic loader.

If all is well then the program will say so. If it is, then enter the *MONITOR* and type the following:

**51551 DEVICE NUM\*,D,1000,1178**

Where D=1 for disk or 1 for tape.  
The new program *551 DEVICE NUM* will be saved.

Reset the computer or if you have more than one of my routines then type **F 1000 1FFF 00 (RETURN)** to clear the work space then type **X** to return to Basic, type **NEW (RETURN)** and you are ready to carry on working.

# Filo-Stacks

Get to grips with the First In Last Out format of the Stack

By Steven Burgess

A stack can be described more simply by using an analogy. If you have a tower of building blocks, a stack of building blocks, you can only take blocks off the top and you can only put blocks on the top. If you try to take a block from the bottom of the pile (stack) then it will fall down, it is impossible to put a block on the bottom of this pile without first lifting it. The same rules apply to stacks in computers, data can only be put on the top of a stack and taken from the top. The acronym FILO, describes this, it stands for First In Last Out. The first item to be put on is the last to be taken off, and the last item to be put on is the first to be taken off.

Stacks are used extensively in machine language programs and are also used by BASIC, whenever GOSUB is encountered, the return address is stored on a stack, so that the computer can return to the correct place when the RETURN statement appears. Stacks are also used during FOR...NEXT loops. Machine language programmers use stacks to store the values of registers which may be corrupted by a routine, which they wish to use.

## Pushing!

The process of adding items to a stack is called pushing, you push a piece of data onto the stack. The actual programming of this is very simple. In order to push data onto a stack you must have a number of things:

1. A stack. (can use an array in BASIC)
2. A stack pointer.

## 3. Data to push.

When you enter the data which you want to push the stack pointer is increased by one, the data is then PUSHED onto the location indicated by the stack pointer and you have finished. The same process is executed every time you push to a stack.

Let's pretend we have set up an array, in BASIC, as a stack, there is, currently no data stored therein. The stack pointer is pointing at location 0 (see diagram 1.0), let's enter a value, 1021, we increase the stack pointer by 1 and store 1021 in location 1 (see diagram 1.1). Entering another value, 4038, causes the same process to occur, except the stack pointer now becomes 2 (see diagram 1.2).

## Popping!

To remove an item from a stack you pop it. Popping an item from the stack causes the item which the stack pointer is pointing at,

CONTENTS	LOCATION
	1
	2
	3
	4
	5
	6
	7
	8
	9
	10
	11
	12
	100
	101
	102
	103

STACK POINTER = 0

DIAGRAM 1.0

CONTENTS	LOCATION
1021	1
	2
	3
	4
	5
	6
	7
	8
	100
	101
	102
	103
	104

STACK POINTER = 1

DIAGRAM 1.1

CONTENTS	LOCATION
1021	1
4038	2
	3
	4
	5
	6
	7
	8
	100
	101
	102
	103
	104

STACK POINTER = 2

DIAGRAM 1.2





# ending asic

If a parameter is given we gather it into the appropriate variable by calling on two ROM routines: `SADR8` gets the value itself and places it in the floating point accumulator 1. `SR7F7` gets the value from the floating point accumulator and puts it into zero page \$14/15, and also into the Y-register (low byte) and the accumulator (high byte).

After each parameter the next character is tested to see if it is a comma. If it isn't, the routine exits by giving a syntax error report. This syntax error report is forced simply by jumping to the normal routine (lines 1180-1185) instead of returning from the subroutine, since the whole of the renumbering routine is a subroutine.

In the case of no start parameter, we enter 18 into the variable, called `START` (lines 2350-2360). This will result in the textfile being renumbered in steps of ten.

In the case of no end parameter, we enter zero into the variable, called `END` (lines 2430-2500). This is, of course, 65536, or `FFF` in the low byte and `FFF` in the high byte.

## Renumbering a Textfile

First, we get the beginning of the textfile from the system variables `STR/SC` and copy it into our variables, called `LINKPOINT` (lines 2680-2710). The beginning of the textfile means also the first linkpointer in the chain of all the linkpointers.

Next, we test if the start parameter had been given (lines 2750-2760). If it hadn't we jump straight to beginning of the renumbering routine proper. Otherwise we have to find the line where renumbering starts.

As I've said, with the help of the linkpointer, this is pretty easy.

We enter a loop which jumps from one linkpointer to the next (lines 2830-3050). That is, the address contained in the linkpointer is gathered and becomes the next linkpointer, and so on.

At the beginning a test is made, if the end of the textfile has been reached (lines 2830-2900). If the end of the textfile has been reached, this means, that the start line given does not exist. In this case the routine exits with a syntax error.

Lines 2880-3050 perform the chaining action itself.

Before we enter the renumbering loop itself, we gather the line number after the linkpointer where we start into a variable, called `CURLINE` (lines 3110-3160). This variable always contains the line number to which the step value is added, performing the renumbering itself.

At the beginning of the renumbering loop itself, we test first of all if the end of the textfile has been reached (lines 3230-3290). That is, if the low byte of the linkpointer contains not zero, the loop continues as normal. If it contains zero, the high byte of the linkpointer is tested for zero. If that too contains zero, the end of the textfile has been reached. The routine exits.

Next, the next linkpointer is put instead of the former one in the variable `LINKPOINT` (lines 3310-3360).

Then we test if the line given in the end parameter has been reached (lines 3400-3520).

For this I am using a special way of comparing two 16-bit values (lines 3400-3520).

As you know, on the 6502 dealing with 16-bit numbers can be quite involved. To compare two 16-bit numbers, we subtract the two numbers from each other and place the result in a variable, called `TEMPSTORE`. This variable has no other purpose but to set the zero and carry flag.

If the first value equals the second, the zero flag will be set. If the first value is less than the second, carry will be clear. And if the first value is larger than the second, carry will be set.

In our routine, if carry is set, it means that the end parameter has been reached and the routine exits.

Finally, the renumbering itself is done by adding the step value to `CURLINE` (lines 3560-3620) and then writing the new line number into its proper place (lines 3640-3710).

```

3700 0000 0000 0000 0000 0000 0000 0000
3710 0000 0000 0000 0000 0000 0000 0000
3720 0000 0000 0000 0000 0000 0000 0000
3730 0000 0000 0000 0000 0000 0000 0000
3740 0000 0000 0000 0000 0000 0000 0000
3750 0000 0000 0000 0000 0000 0000 0000
3760 0000 0000 0000 0000 0000 0000 0000
3770 0000 0000 0000 0000 0000 0000 0000
3780 0000 0000 0000 0000 0000 0000 0000
3790 0000 0000 0000 0000 0000 0000 0000
3800 0000 0000 0000 0000 0000 0000 0000
3810 0000 0000 0000 0000 0000 0000 0000
3820 0000 0000 0000 0000 0000 0000 0000
3830 0000 0000 0000 0000 0000 0000 0000
3840 0000 0000 0000 0000 0000 0000 0000
3850 0000 0000 0000 0000 0000 0000 0000
3860 0000 0000 0000 0000 0000 0000 0000
3870 0000 0000 0000 0000 0000 0000 0000
3880 0000 0000 0000 0000 0000 0000 0000
3890 0000 0000 0000 0000 0000 0000 0000
3900 0000 0000 0000 0000 0000 0000 0000
3910 0000 0000 0000 0000 0000 0000 0000
3920 0000 0000 0000 0000 0000 0000 0000
3930 0000 0000 0000 0000 0000 0000 0000
3940 0000 0000 0000 0000 0000 0000 0000
3950 0000 0000 0000 0000 0000 0000 0000
3960 0000 0000 0000 0000 0000 0000 0000
3970 0000 0000 0000 0000 0000 0000 0000
3980 0000 0000 0000 0000 0000 0000 0000
3990 0000 0000 0000 0000 0000 0000 0000
4000 0000 0000 0000 0000 0000 0000 0000
4010 0000 0000 0000 0000 0000 0000 0000
4020 0000 0000 0000 0000 0000 0000 0000
4030 0000 0000 0000 0000 0000 0000 0000
4040 0000 0000 0000 0000 0000 0000 0000
4050 0000 0000 0000 0000 0000 0000 0000
4060 0000 0000 0000 0000 0000 0000 0000
4070 0000 0000 0000 0000 0000 0000 0000
4080 0000 0000 0000 0000 0000 0000 0000
4090 0000 0000 0000 0000 0000 0000 0000
4100 0000 0000 0000 0000 0000 0000 0000
4110 0000 0000 0000 0000 0000 0000 0000
4120 0000 0000 0000 0000 0000 0000 0000
4130 0000 0000 0000 0000 0000 0000 0000
4140 0000 0000 0000 0000 0000 0000 0000
4150 0000 0000 0000 0000 0000 0000 0000
4160 0000 0000 0000 0000 0000 0000 0000
4170 0000 0000 0000 0000 0000 0000 0000
4180 0000 0000 0000 0000 0000 0000 0000
4190 0000 0000 0000 0000 0000 0000 0000
4200 0000 0000 0000 0000 0000 0000 0000
4210 0000 0000 0000 0000 0000 0000 0000
4220 0000 0000 0000 0000 0000 0000 0000
4230 0000 0000 0000 0000 0000 0000 0000
4240 0000 0000 0000 0000 0000 0000 0000
4250 0000 0000 0000 0000 0000 0000 0000
4260 0000 0000 0000 0000 0000 0000 0000
4270 0000 0000 0000 0000 0000 0000 0000
4280 0000 0000 0000 0000 0000 0000 0000
4290 0000 0000 0000 0000 0000 0000 0000
4300 0000 0000 0000 0000 0000 0000 0000
4310 0000 0000 0000 0000 0000 0000 0000
4320 0000 0000 0000 0000 0000 0000 0000
4330 0000 0000 0000 0000 0000 0000 0000
4340 0000 0000 0000 0000 0000 0000 0000
4350 0000 0000 0000 0000 0000 0000 0000
4360 0000 0000 0000 0000 0000 0000 0000
4370 0000 0000 0000 0000 0000 0000 0000
4380 0000 0000 0000 0000 0000 0000 0000
4390 0000 0000 0000 0000 0000 0000 0000
4400 0000 0000 0000 0000 0000 0000 0000
4410 0000 0000 0000 0000 0000 0000 0000
4420 0000 0000 0000 0000 0000 0000 0000
4430 0000 0000 0000 0000 0000 0000 0000
4440 0000 0000 0000 0000 0000 0000 0000
4450 0000 0000 0000 0000 0000 0000 0000
4460 0000 0000 0000 0000 0000 0000 0000
4470 0000 0000 0000 0000 0000 0000 0000
4480 0000 0000 0000 0000 0000 0000 0000
4490 0000 0000 0000 0000 0000 0000 0000
4500 0000 0000 0000 0000 0000 0000 0000
4510 0000 0000 0000 0000 0000 0000 0000
4520 0000 0000 0000 0000 0000 0000 0000
4530 0000 0000 0000 0000 0000 0000 0000
4540 0000 0000 0000 0000 0000 0000 0000
4550 0000 0000 0000 0000 0000 0000 0000
4560 0000 0000 0000 0000 0000 0000 0000
4570 0000 0000 0000 0000 0000 0000 0000
4580 0000 0000 0000 0000 0000 0000 0000
4590 0000 0000 0000 0000 0000 0000 0000
4600 0000 0000 0000 0000 0000 0000 0000
4610 0000 0000 0000 0000 0000 0000 0000
4620 0000 0000 0000 0000 0000 0000 0000
4630 0000 0000 0000 0000 0000 0000 0000
4640 0000 0000 0000 0000 0000 0000 0000
4650 0000 0000 0000 0000 0000 0000 0000
4660 0000 0000 0000 0000 0000 0000 0000
4670 0000 0000 0000 0000 0000 0000 0000
4680 0000 0000 0000 0000 0000 0000 0000
4690 0000 0000 0000 0000 0000 0000 0000
4700 0000 0000 0000 0000 0000 0000 0000
4710 0000 0000 0000 0000 0000 0000 0000
4720 0000 0000 0000 0000 0000 0000 0000
4730 0000 0000 0000 0000 0000 0000 0000
4740 0000 0000 0000 0000 0000 0000 0000
4750 0000 0000 0000 0000 0000 0000 0000
4760 0000 0000 0000 0000 0000 0000 0000
4770 0000 0000 0000 0000 0000 0000 0000
4780 0000 0000 0000 0000 0000 0000 0000
4790 0000 0000 0000 0000 0000 0000 0000
4800 0000 0000 0000 0000 0000 0000 0000
4810 0000 0000 0000 0000 0000 0000 0000
4820 0000 0000 0000 0000 0000 0000 0000
4830 0000 0000 0000 0000 0000 0000 0000
4840 0000 0000 0000 0000 0000 0000 0000
4850 0000 0000 0000 0000 0000 0000 0000
4860 0000 0000 0000 0000 0000 0000 0000
4870 0000 0000 0000 0000 0000 0000 0000
4880 0000 0000 0000 0000 0000 0000 0000
4890 0000 0000 0000 0000 0000 0000 0000
4900 0000 0000 0000 0000 0000 0000 0000
4910 0000 0000 0000 0000 0000 0000 0000
4920 0000 0000 0000 0000 0000 0000 0000
4930 0000 0000 0000 0000 0000 0000 0000
4940 0000 0000 0000 0000 0000 0000 0000
4950 0000 0000 0000 0000 0000 0000 0000
4960 0000 0000 0000 0000 0000 0000 0000
4970 0000 0000 0000 0000 0000 0000 0000
4980 0000 0000 0000 0000 0000 0000 0000
4990 0000 0000 0000 0000 0000 0000 0000
5000 0000 0000 0000 0000 0000 0000 0000
5010 0000 0000 0000 0000 0000 0000 0000
5020 0000 0000 0000 0000 0000 0000 0000
5030 0000 0000 0000 0000 0000 0000 0000
5040 0000 0000 0000 0000 0000 0000 0000
5050 0000 0000 0000 0000 0000 0000 0000
5060 0000 0000 0000 0000 0000 0000 0000
5070 0000 0000 0000 0000 0000 0000 0000
5080 0000 0000 0000 0000 0000 0000 0000
5090 0000 0000 0000 0000 0000 0000 0000
5100 0000 0000 0000 0000 0000 0000 0000
5110 0000 0000 0000 0000 0000 0000 0000
5120 0000 0000 0000 0000 0000 0000 0000
5130 0000 0000 0000 0000 0000 0000 0000
5140 0000 0000 0000 0000 0000 0000 0000
5150 0000 0000 0000 0000 0000 0000 0000
5160 0000 0000 0000 0000 0000 0000 0000
5170 0000 0000 0000 0000 0000 0000 0000
5180 0000 0000 0000 0000 0000 0000 0000
5190 0000 0000 0000 0000 0000 0000 0000
5200 0000 0000 0000 0000 0000 0000 0000
5210 0000 0000 0000 0000 0000 0000 0000
5220 0000 0000 0000 0000 0000 0000 0000
5230 0000 0000 0000 0000 0000 0000 0000
5240 0000 0000 0000 0000 0000 0000 0000
5250 0000 0000 0000 0000 0000 0000 0000
5260 0000 0000 0000 0000 0000 0000 0000
5270 0000 0000 0000 0000 0000 0000 0000
5280 0000 0000 0000 0000 0000 0000 0000
5290 0000 0000 0000 0000 0000 0000 0000
5300 0000 0000 0000 0000 0000 0000 0000
5310 0000 0000 0000 0000 0000 0000 0000
5320 0000 0000 0000 0000 0000 0000 0000
5330 0000 0000 0000 0000 0000 0000 0000
5340 0000 0000 0000 0000 0000 0000 0000
5350 0000 0000 0000 0000 0000 0000 0000
5360 0000 0000 0000 0000 0000 0000 0000
5370 0000 0000 0000 0000 0000 0000 0000
5380 0000 0000 0000 0000 0000 0000 0000
5390 0000 0000 0000 0000 0000 0000 0000
5400 0000 0000 0000 0000 0000 0000 0000
5410 0000 0000 0000 0000 0000 0000 0000
5420 0000 0000 0000 0000 0000 0000 0000
5430 0000 0000 0000 0000 0000 0000 0000
5440 0000 0000 0000 0000 0000 0000 0000
5450 0000 0000 0000 0000 0000 0000 0000
5460 0000 0000 0000 0000 0000 0000 0000
5470 0000 0000 0000 0000 0000 0000 0000
5480 0000 0000 0000 0000 0000 0000 0000
5490 0000 0000 0000 0000 0000 0000 0000
5500 0000 0000 0000 0000 0000 0000 0000
5510 0000 0000 0000 0000 0000 0000 0000
5520 0000 0000 0000 0000 0000 0000 0000
5530 0000 0000 0000 0000 0000 0000 0000
5540 0000 0000 0000 0000 0000 0000 0000
5550 0000 0000 0000 0000 0000 0000 0000
5560 0000 0000 0000 0000 0000 0000 0000
5570 0000 0000 0000 0000 0000 0000 0000
5580 0000 0000 0000 0000 0000 0000 0000
5590 0000 0000 0000 0000 0000 0000 0000
5600 0000 0000 0000 0000 0000 0000 0000
5610 0000 0000 0000 0000 0000 0000 0000
5620 0000 0000 0000 0000 0000 0000 0000
5630 0000 0000 0000 0000 0000 0000 0000
5640 0000 0000 0000 0000 0000 0000 0000
5650 0000 0000 0000 0000 0000 0000 0000
5660 0000 0000 0000 0000 0000 0000 0000
5670 0000 0000 0000 0000 0000 0000 0000
5680 0000 0000 0000 0000 0000 0000 0000
5690 0000 0000 0000 0000 0000 0000 0000
5700 0000 0000 0000 0000 0000 0000 0000
5710 0000 0000 0000 0000 0000 0000 0000
5720 0000 0000 0000 0000 0000 0000 0000
5730 0000 0000 0000 0000 0000 0000 0000
5740 0000 0000 0000 0000 0000 0000 0000
5750 0000 0000 0000 0000 0000 0000 0000
5760 0000 0000 0000 0000 0000 0000 0000
5770 0000 0000 0000 0000 0000 0000 0000
5780 0000 0000 0000 0000 0000 0000 0000
5790 0000 0000 0000 0000 0000 0000 0000
5800 0000 0000 0000 0000 0000 0000 0000
5810 0000 0000 0000 0000 0000 0000 0000
5820 0000 0000 0000 0000 0000 0000 0000
5830 0000 0000 0000 0000 0000 0000 0000
5840 0000 0000 0000 0000 0000 0000 0000
5850 0000 0000 0000 0000 0000 0000 0000
5860 0000 0000 0000 0000 0000 0000 0000
5870 0000 0000 0000 0000 0000 0000 0000
5880 0000 0000 0000 0000 0000 0000 0000
5890 0000 0000 0000 0000 0000 0000 0000
5900 0000 0000 0000 0000 0000 0000 0000
5910 0000 0000 0000 0000 0000 0000 0000
5920 0000 0000 0000 0000 0000 0000 0000
5930 0000 0000 0000 0000 0000 0000 0000
5940 0000 0000 0000 0000 0000 0000 0000
5950 0000 0000 0000 0000 0000 0000 0000
5960 0000 0000 0000 0000 0000 0000 0000
5970 0000 0000 0000 0000 0000 0000 0000
5980 0000 0000 0000 0000 0000 0000 0000
5990 0000 0000 0000 0000 0000 0000 0000
6000 0000 0000 0000 0000 0000 0000 0000
6010 0000 0000 0000 0000 0000 0000 0000
6020 0000 0000 0000 0000 0000 0000 0000
6030 0000 0000 0000 0000 0000 0000 0000
6040 0000 0000 0000 0000 0000 0000 0000
6050 0000 0000 0000 0000 0000 0000 0000
6060 0000 0000 0000 0000 0000 0000 0000
6070 0000 0000 0000 0000 0000 0000 0000
6080 0000 0000 0000 0000 0000 0000 0000
6090 0000 0000 0000 0000 0000 0000 0000
6100 0000 0000 0000 0000 0000 0000 0000
6110 0000 0000 0000 0000 0000 0000 0000
6120 0000 0000 0000 0000 0000 0000 0000
6130 0000 0000 0000 0000 0000 0000 0000
6140 0000 0000 0000 0000 0000 0000 0000
6150 0000 0000 0000 0000 0000 0000 0000
6160 0000 0000 0000 0000 0000 0000 0000
6170 0000 0000 0000 0000 0000 0000 0000
6180 0000 0000 0000 0000 0000 0000 0000
6190 0000 0000 0000 0000 0000 0000 0000
6200 0000 0000 0000 0000 0000 0000 0000
6210 0000 0000 0000 0000 0000 0000 0000
6220 0000 0000 0000 0000 0000 0000 0000
6230 0000 0000 0000 0000 0000 0000 0000
6240 0000 0000 0000 0000 0000 0000 0000
6250 0000 0000 0000 0000 0000 0000 0000
6260 0000 0000 0000 0000 0000 0000 0000
6270 0000 0000 0000 0000 0000 0000 0000
6280 0000 0000 0000 0000 0000 0000 0000
6290 0000 0000 0000 0000 0000 0000 0000
6300 0000 0000 0000 0000 0000 0000 0000
6310 0000 0000 0000 0000 0000 0000 0000
6320 0000 0000 0000 0000 0000 0000 
```

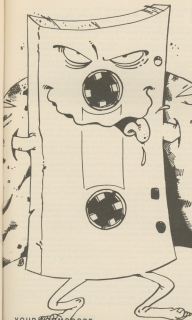
# C64 PROGRAMMING

1000	***	END	0000	END
1001	***	END	0001	END
1002	***	END	0002	END
1003	***	END	0003	END
1004	***	END	0004	END
1005	***	END	0005	END
1006	***	END	0006	END
1007	***	END	0007	END
1008	***	END	0008	END
1009	***	END	0009	END
1010	***	END	0010	END
1011	***	END	0011	END
1012	***	END	0012	END
1013	***	END	0013	END
1014	***	END	0014	END
1015	***	END	0015	END
1016	***	END	0016	END
1017	***	END	0017	END
1018	***	END	0018	END
1019	***	END	0019	END
1020	***	END	0020	END
1021	***	END	0021	END
1022	***	END	0022	END
1023	***	END	0023	END
1024	***	END	0024	END
1025	***	END	0025	END
1026	***	END	0026	END
1027	***	END	0027	END
1028	***	END	0028	END
1029	***	END	0029	END
1030	***	END	0030	END
1031	***	END	0031	END
1032	***	END	0032	END
1033	***	END	0033	END
1034	***	END	0034	END
1035	***	END	0035	END
1036	***	END	0036	END
1037	***	END	0037	END
1038	***	END	0038	END
1039	***	END	0039	END
1040	***	END	0040	END
1041	***	END	0041	END
1042	***	END	0042	END
1043	***	END	0043	END
1044	***	END	0044	END
1045	***	END	0045	END
1046	***	END	0046	END
1047	***	END	0047	END
1048	***	END	0048	END
1049	***	END	0049	END
1050	***	END	0050	END
1051	***	END	0051	END
1052	***	END	0052	END
1053	***	END	0053	END
1054	***	END	0054	END
1055	***	END	0055	END
1056	***	END	0056	END
1057	***	END	0057	END
1058	***	END	0058	END
1059	***	END	0059	END
1060	***	END	0060	END
1061	***	END	0061	END
1062	***	END	0062	END
1063	***	END	0063	END
1064	***	END	0064	END
1065	***	END	0065	END
1066	***	END	0066	END
1067	***	END	0067	END
1068	***	END	0068	END
1069	***	END	0069	END
1070	***	END	0070	END
1071	***	END	0071	END
1072	***	END	0072	END
1073	***	END	0073	END
1074	***	END	0074	END
1075	***	END	0075	END
1076	***	END	0076	END
1077	***	END	0077	END
1078	***	END	0078	END
1079	***	END	0079	END
1080	***	END	0080	END
1081	***	END	0081	END
1082	***	END	0082	END
1083	***	END	0083	END
1084	***	END	0084	END
1085	***	END	0085	END
1086	***	END	0086	END
1087	***	END	0087	END
1088	***	END	0088	END
1089	***	END	0089	END
1090	***	END	0090	END
1091	***	END	0091	END
1092	***	END	0092	END
1093	***	END	0093	END
1094	***	END	0094	END
1095	***	END	0095	END
1096	***	END	0096	END
1097	***	END	0097	END
1098	***	END	0098	END
1099	***	END	0099	END
1100	***	END	0100	END

# Flash Load

*Create your own flashing bands while loading and saving your creations*

*By Clive Horner*



**F**lash Load is a machine code program which creates the flashing bands while loading a normal program from cassette, just like commercial software.

To use the routine, type in the Basic loader and save it. Once you are happy with it you may run it. You should now see the message *FLASH ENABLED*.

There are a couple of ways to control the program. For example in direct mode you can type:

**POKE155** This will reset the timer timer back to normal.

**POKE156** This enables FLASH LOAD. This is necessary after a reset or after resetting the computer.

Also when saving programs the flashing bands will also appear.

```

10 POKE155
20 HOME:PRINT"FLASH ENABLED"
30 PRINT"PRESS ANY KEY TO CONTINUE"
40 INPUT"PLEASE PRESS ANY KEY"
50 HOME:PRINT"FLASH ENABLED"
60 PRINT"155:156:157:158:159:160:161:162:163:164"
70 PRINT"165:166:167:168:169:170:171:172:173:174"
80 PRINT"175:176:177:178:179:180:181:182:183:184"
90 PRINT"185:186:187:188:189:190:191:192:193:194"
100 PRINT"195:196:197:198:199:200:201:202:203:204"
110 PRINT"205:206:207:208:209:210:211:212:213:214"
120 PRINT"215:216:217:218:219:220:221:222:223:224"
130 PRINT"225:226:227:228:229:230:231:232:233:234"
140 PRINT"235:236:237:238:239:240:241:242:243:244"
150 PRINT"245:246:247:248:249:250:251:252:253:254"
160 PRINT"255:256:257:258:259:260:261:262:263:264"
170 PRINT"265:266:267:268:269:270:271:272:273:274"
180 PRINT"275:276:277:278:279:280:281:282:283:284"
190 PRINT"285:286:287:288:289:290:291:292:293:294"
200 PRINT"295:296:297:298:299:300:301:302:303:304"
210 PRINT"305:306:307:308:309:310:311:312:313:314"
220 PRINT"315:316:317:318:319:320:321:322:323:324"
230 PRINT"325:326:327:328:329:330:331:332:333:334"
240 PRINT"335:336:337:338:339:340:341:342:343:344"
250 PRINT"345:346:347:348:349:350:351:352:353:354"
260 PRINT"355:356:357:358:359:360:361:362:363:364"
270 PRINT"365:366:367:368:369:370:371:372:373:374"
280 PRINT"375:376:377:378:379:380:381:382:383:384"
290 PRINT"385:386:387:388:389:390:391:392:393:394"
300 PRINT"395:396:397:398:399:400:401:402:403:404"
310 PRINT"405:406:407:408:409:410:411:412:413:414"
320 PRINT"415:416:417:418:419:420:421:422:423:424"
330 PRINT"425:426:427:428:429:430:431:432:433:434"
340 PRINT"435:436:437:438:439:440:441:442:443:444"
350 PRINT"445:446:447:448:449:450:451:452:453:454"
360 PRINT"455:456:457:458:459:460:461:462:463:464"
370 PRINT"465:466:467:468:469:470:471:472:473:474"
380 PRINT"475:476:477:478:479:480:481:482:483:484"
390 PRINT"485:486:487:488:489:490:491:492:493:494"
400 PRINT"495:496:497:498:499:500:501:502:503:504"
410 PRINT"505:506:507:508:509:510:511:512:513:514"
420 PRINT"515:516:517:518:519:520:521:522:523:524"
430 PRINT"525:526:527:528:529:530:531:532:533:534"
440 PRINT"535:536:537:538:539:540:541:542:543:544"
450 PRINT"545:546:547:548:549:550:551:552:553:554"
460 PRINT"555:556:557:558:559:560:561:562:563:564"
470 PRINT"565:566:567:568:569:570:571:572:573:574"
480 PRINT"575:576:577:578:579:580:581:582:583:584"
490 PRINT"585:586:587:588:589:590:591:592:593:594"
500 PRINT"595:596:597:598:599:600:601:602:603:604"
510 PRINT"605:606:607:608:609:610:611:612:613:614"
520 PRINT"615:616:617:618:619:620:621:622:623:624"
530 PRINT"625:626:627:628:629:630:631:632:633:634"
540 PRINT"635:636:637:638:639:640:641:642:643:644"
550 PRINT"645:646:647:648:649:650:651:652:653:654"
560 PRINT"655:656:657:658:659:660:661:662:663:664"
570 PRINT"665:666:667:668:669:670:671:672:673:674"
580 PRINT"675:676:677:678:679:680:681:682:683:684"
590 PRINT"685:686:687:688:689:690:691:692:693:694"
600 PRINT"695:696:697:698:699:700:701:702:703:704"
610 PRINT"705:706:707:708:709:710:711:712:713:714"
620 PRINT"715:716:717:718:719:720:721:722:723:724"
630 PRINT"725:726:727:728:729:730:731:732:733:734"
640 PRINT"735:736:737:738:739:740:741:742:743:744"
650 PRINT"745:746:747:748:749:750:751:752:753:754"
660 PRINT"755:756:757:758:759:760:761:762:763:764"
670 PRINT"765:766:767:768:769:770:771:772:773:774"
680 PRINT"775:776:777:778:779:780:781:782:783:784"
690 PRINT"785:786:787:788:789:790:791:792:793:794"
700 PRINT"795:796:797:798:799:800:801:802:803:804"
710 PRINT"805:806:807:808:809:810:811:812:813:814"
720 PRINT"815:816:817:818:819:820:821:822:823:824"
730 PRINT"825:826:827:828:829:830:831:832:833:834"
740 PRINT"835:836:837:838:839:840:841:842:843:844"
750 PRINT"845:846:847:848:849:850:851:852:853:854"
760 PRINT"855:856:857:858:859:860:861:862:863:864"
770 PRINT"865:866:867:868:869:870:871:872:873:874"
780 PRINT"875:876:877:878:879:880:881:882:883:884"
790 PRINT"885:886:887:888:889:890:891:892:893:894"
800 PRINT"895:896:897:898:899:900:901:902:903:904"
810 PRINT"905:906:907:908:909:910:911:912:913:914"
820 PRINT"915:916:917:918:919:920:921:922:923:924"
830 PRINT"925:926:927:928:929:930:931:932:933:934"
840 PRINT"935:936:937:938:939:940:941:942:943:944"
850 PRINT"945:946:947:948:949:950:951:952:953:954"
860 PRINT"955:956:957:958:959:960:961:962:963:964"
870 PRINT"965:966:967:968:969:970:971:972:973:974"
880 PRINT"975:976:977:978:979:980:981:982:983:984"
890 PRINT"985:986:987:988:989:990:991:992:993:994"
900 PRINT"995:996:997:998:999:1000:1001:1002:1003:1004"
910 PRINT"1005:1006:1007:1008:1009:1010:1011:1012:1013:1014"
920 PRINT"1015:1016:1017:1018:1019:1020:1021:1022:1023:1024"
930 PRINT"1025:1026:1027:1028:1029:1030:1031:1032:1033:1034"
940 PRINT"1035:1036:1037:1038:1039:1040:1041:1042:1043:1044"
950 PRINT"1045:1046:1047:1048:1049:1050:1051:1052:1053:1054"
960 PRINT"1055:1056:1057:1058:1059:1060:1061:1062:1063:1064"
970 PRINT"1065:1066:1067:1068:1069:1070:1071:1072:1073:1074"
980 PRINT"1075:1076:1077:1078:1079:1080:1081:1082:1083:1084"
990 PRINT"1085:1086:1087:1088:1089:1090:1091:1092:1093:1094"
1000 PRINT"1095:1096:1097:1098:1099:1100:1101:1102:1103:1104"
1100 PRINT"1105:1106:1107:1108:1109:1110:1111:1112:1113:1114"
1110 PRINT"1115:1116:1117:1118:1119:1120:1121:1122:1123:1124"
1120 PRINT"1125:1126:1127:1128:1129:1130:1131:1132:1133:1134"
1130 PRINT"1135:1136:1137:1138:1139:1140:1141:1142:1143:1144"
1140 PRINT"1145:1146:1147:1148:1149:1150:1151:1152:1153:1154"
1150 PRINT"1155:1156:1157:1158:1159:1160:1161:1162:1163:1164"
1160 PRINT"1165:1166:1167:1168:1169:1170:1171:1172:1173:1174"
1170 PRINT"1175:1176:1177:1178:1179:1180:1181:1182:1183:1184"
1180 PRINT"1185:1186:1187:1188:1189:1190:1191:1192:1193:1194"
1190 PRINT"1195:1196:1197:1198:1199:1200:1201:1202:1203:1204"
1200 PRINT"1205:1206:1207:1208:1209:1210:1211:1212:1213:1214"
1210 PRINT"1215:1216:1217:1218:1219:1220:1221:1222:1223:1224"
1220 PRINT"1225:1226:1227:1228:1229:1230:1231:1232:1233:1234"
1230 PRINT"1235:1236:1237:1238:1239:1240:1241:1242:1243:1244"
1240 PRINT"1245:1246:1247:1248:1249:1250:1251:1252:1253:1254"
1250 PRINT"1255:1256:1257:1258:1259:1260:1261:1262:1263:1264"
1260 PRINT"1265:1266:1267:1268:1269:1270:1271:1272:1273:1274"
1270 PRINT"1275:1276:1277:1278:1279:1280:1281:1282:1283:1284"
1280 PRINT"1285:1286:1287:1288:1289:1290:1291:1292:1293:1294"
1290 PRINT"1295:1296:1297:1298:1299:1300:1301:1302:1303:1304"
1300 PRINT"1305:1306:1307:1308:1309:1310:1311:1312:1313:1314"
1310 PRINT"1315:1316:1317:1318:1319:1320:1321:1322:1323:1324"
1320 PRINT"1325:1326:1327:1328:1329:1330:1331:1332:1333:1334"
1330 PRINT"1335:1336:1337:1338:1339:1340:1341:1342:1343:1344"
1340 PRINT"1345:1346:1347:1348:1349:1350:1351:1352:1353:1354"
1350 PRINT"1355:1356:1357:1358:1359:1360:1361:1362:1363:1364"
1360 PRINT"1365:1366:1367:1368:1369:1370:1371:1372:1373:1374"
1370 PRINT"1375:1376:1377:1378:1379:1380:1381:1382:1383:1384"
1380 PRINT"1385:1386:1387:1388:1389:1390:1391:1392:1393:1394"
1390 PRINT"1395:1396:1397:1398:1399:1400:1401:1402:1403:1404"
1400 PRINT"1405:1406:1407:1408:1409:1410:1411:1412:1413:1414"
1410 PRINT"1415:1416:1417:1418:1419:1420:1421:1422:1423:1424"
1420 PRINT"1425:1426:1427:1428:1429:1430:1431:1432:1433:1434"
1430 PRINT"1435:1436:1437:1438:1439:1440:1441:1442:1443:1444"
1440 PRINT"1445:1446:1447:1448:1449:1450:1451:1452:1453:1454"
1450 PRINT"1455:1456:1457:1458:1459:1460:1461:1462:1463:1464"
1460 PRINT"1465:1466:1467:1468:1469:1470:1471:1472:1473:1474"
1470 PRINT"1475:1476:1477:1478:1479:1480:1481:1482:1483:1484"
1480 PRINT"1485:1486:1487:1488:1489:1490:1491:1492:1493:1494"
1490 PRINT"1495:1496:1497:1498:1499:1500:1501:1502:1503:1504"
1500 PRINT"1505:1506:1507:1508:1509:1510:1511:1512:1513:1514"
1510 PRINT"1515:1516:1517:1518:1519:1520:1521:1522:1523:1524"
1520 PRINT"1525:1526:1527:1528:1529:1530:1531:1532:1533:1534"
1530 PRINT"1535:1536:1537:1538:1539:1540:1541:1542:1543:1544"
1540 PRINT"1545:1546:1547:1548:1549:1550:1551:1552:1553:1554"
1550 PRINT"1555:1556:1557:1558:1559:1560:1561:1562:1563:1564"
1560 PRINT"1565:1566:1567:1568:1569:1570:1571:1572:1573:1574"
1570 PRINT"1575:1576:1577:1578:1579:1580:1581:1582:1583:1584"
1580 PRINT"1585:1586:1587:1588:1589:1590:1591:1592:1593:1594"
1590 PRINT"1595:1596:1597:1598:1599:1600:1601:1602:1603:1604"
1600 PRINT"1605:1606:1607:1608:1609:1610:1611:1612:1613:1614"
1610 PRINT"1615:1616:1617:1618:1619:1620:1621:1622:1623:1624"
1620 PRINT"1625:1626:1627:1628:1629:1630:1631:1632:1633:1634"
1630 PRINT"1635:1636:1637:1638:1639:1640:1641:1642:1643:1644"
1640 PRINT"1645:1646:1647:1648:1649:1650:1651:1652:1653:1654"
1650 PRINT"1655:1656:1657:1658:1659:1660:1661:1662:1663:1664"
1660 PRINT"1665:1666:1667:1668:1669:1670:1671:1672:1673:1674"
1670 PRINT"1675:1676:1677:1678:1679:1680:1681:1682:1683:1684"
1680 PRINT"1685:1686:1687:1688:1689:1690:1691:1692:1693:1694"
1690 PRINT"1695:1696:1697:1698:1699:1700:1701:1702:1703:1704"
1700 PRINT"1705:1706:1707:1708:1709:1710:1711:1712:1713:1714"
1710 PRINT"1715:1716:1717:1718:1719:1720:1721:1722:1723:1724"
1720 PRINT"1725:1726:1727:1728:1729:1730:1731:1732:1733:1734"
1730 PRINT"1735:1736:1737:1738:1739:1740:1741:1742:1743:1744"
1740 PRINT"1745:1746:1747:1748:1749:1750:1751:1752:1753:1754"
1750 PRINT"1755:1756:1757:1758:1759:1760:1761:1762:1763:1764"
1760 PRINT"1765:1766:1767:1768:1769:1770:1771:1772:1773:1774"
1770 PRINT"1775:1776:1777:1778:1779:1780:1781:1782:1783:1784"
1780 PRINT"1785:1786:1787:1788:1789:1790:1791:1792:1793:1794"
1790 PRINT"1795:1796:1797:1798:1799:1800:1801:1802:1803:1804"
1800 PRINT"1805:1806:1807:1808:1809:1810:1811:1812:1813:1814"
1810 PRINT"1815:1816:1817:1818:1819:1820:1821:1822:1823:1824"
1820 PRINT"1825:1826:1827:1828:1829:1830:1831:1832:1833:1834"
1830 PRINT"1835:1836:1837:1838:1839:1840:1841:1842:1843:1844"
1840 PRINT"1845:1846:1847:1848:1849:1850:1851:1852:1853:1854"
1850 PRINT"1855:1856:1857:1858:1859:1860:1861:1862:1863:1864"
1860 PRINT"1865:1866:1867:1868:1869:1870:1871:1872:1873:1874"
1870 PRINT"1875:1876:1877:1878:1879:1880:1881:1882:1883:1884"
1880 PRINT"1885:1886:1887:1888:1889:1890:1891:1892:1893:1894"
1890 PRINT"1895:1896:1897:1898:1899:1900:1901:1902:1903:1904"
1900 PRINT"1905:1906:1907:1908:1909:1910:1911:1912:1913:1914"
1910 PRINT"1915:1916:1917:1918:1919:1920:1921:1922:1923:1924"
1920 PRINT"1925:1926:1927:1928:1929:1930:1931:1932:1933:1934"
1930 PRINT"1935:1936:1937:1938:1939:1940:1941:1942:1943:1944"
1940 PRINT"1945:1946:1947:1948:1949:1950:1951:1952:1953:1954"
1950 PRINT"1955:1956:1957:1958:1959:1960:1961:1962:1963:1964"
1960 PRINT"1965:1966:1967:1968:1969:1970:1971:1972:1973:1974"
1970 PRINT"1975:1976:1977:1978:1979:1980:1981:1982:1983:1984"
1980 PRINT"1985:1986:1987:1988:1989:1990:1991:1992:1993:1994"
1990 PRINT"1995:1996:1997:1998:1999:2000:2001:2002:2003:2004"
2000 PRINT"2005:2006:2007:2008:2009:2010:2011:2012:2013:2014"
2010 PRINT"2015:2016:2017:2018:2019:2020:2021:2022:2023:2024"
2020 PRINT"2025:2026:2027:2028:2029:2030:2031:2032:2033:2034"
2030 PRINT"2035:2036:2037:2038:2039:2040:2041:2042:2043:2044"
2040 PRINT"2045:2046:2047:2048:2049:2050:2051:2052:2053:2054"
2050 PRINT"2055:2056:2057:2058:2059:2060:2061:2062:2063:2064"
2060 PRINT"2065:2066:2067:2068:2069:2070:2071:2072:2073:2074"
2070 PRINT"2075:2076:2077:2078:2079:2080:2081:2082:2083:2084"
2080 PRINT"2085:2086:2087:2088:2089:2090:2091:2092:2093:2094"
2090 PRINT"2095:2096:2097:2098:2099:2100:2101:2102:2103:2104"
2100 PRINT"2105:2106:2107:2108:2109:2110:2111:2112:2113:2114"
2110 PRINT"2115:2116:2117:2118:2119:2120:2121:2122:2123:2124"
2120 PRINT"2125:2126:2127:2128:2129:2130:2131:2132:2133:2134"
2130 PRINT"2135:2136:2137:2138:2139:2140:2141:2142:2143:2144"
2140 PRINT"2145:2146:2147:2148:2149:2150:2151:2152:2153:2154"
2150 PRINT"2155:2156:2157:2158:2159:2160:2161:2162:2163:2164"
2160 PRINT"2165:2166:2167:2168:2169:2170:2171:2172:2173:2174"
2170 PRINT"2175:2176:2177:2178:2179:2180:2181:2182:2183:2184"
2180 PRINT"2185:2186:2187:2188:2189:2190:2191:2192:2193:2194"
2190 PRINT"2195:2196:2197:2198:2199:2200:2201:2202:2203:2204"
2200 PRINT"2205:2206:2207:2208:2209:2210:2211:2212:2213:2214"
2210 PRINT"2215:2216:2217:2218:2219:2220:2221:2222:2223:2224"
2220 PRINT"2225:2226:2227:2228:2229:2230:2231:2232:2233:2234"
2230 PRINT"2235:2236:2237:2238:2239:2240:2241:2242:2243:2244"
2240 PRINT"2245:2246:2247:2248:2249:2250:2251:2252:2253:2254"
2250 PRINT"2255:2256:2257:2258:2259:2260:2261:2262:2263:2264"
2260 PRINT"2265:2266:2267:2268:2269:2270:2271:2272:2273:2274"
2270 PRINT"2275:2276:2277:2278:2279:2280:2281:2282:2283:2284"
2280 PRINT"2285:2286:2287:2288:2289:2290:2291:2292:2293:2294"
2290 PRINT"2295:2296:2297:2298:2299:2300:2301:2302:2303:2304"
2300 PRINT"2305:2306:2307:2308:2309:2310:2311:2312:2313:2314"
2310 PRINT"2315:2316:2317:2318:2319:2320:2321:2322:2323:2324"
2320 PRINT"2325:2326:2327:2328:2329:2330:2331:2332:2333:2334"
2330 PRINT"2335:2336:2337:2338:2339:2340:2341:2342:2343:2344"
2340 PRINT"2345:2346:2347:2348:2349:2350:2351:2352:2353:2354"
2350 PRINT"2355:2356:2357:2358:2359:2360:2361:2362:2363:2364
```

# Get the most from your disk drive with this enhanced DOS utility

By M. Holmes

**T**he old C64, although undoubtedly still very popular, is, it must be admitted, getting a bit long in the teeth and does tend to show its age even when compared with some other contemporary makes, and more than ever by modern day expectations. For instance, the way in which the operating system with which it is provided leans in favour of tape based data storage, to such a degree that when floppy disk drives became more affordable, the awkward nature in which the fd was made to converse with them was guaranteed to frustrate in double quick time. The nice consequence of this though is that said drives have to take care of the large part of disk management themselves, which leaves the computer free of those activities.

There is, to put it politely, crude simplicity of the Basic provided, when you consider what wonderful and useful keywords other machines have. It didn't take me too long to discover that really it's a good thing that the 64's Basic should be so, er, basic. Whilst it is still possible to do what most other Basic do, with a bit of application, my listings are easily transportable to another machine, since bog standard Microsoft based keywords are used. Have you ever tried converting for example a BBC program for a Commodore to use? Forget it.

In order to extend the Commodore's repertoire, or speed things up a bit, one usually has to resort to machine code. This isn't necessarily all that difficult (it depends on what you want; not all that can be done in machine code is worth doing, and not all that is worth doing can be done), because there are a whole host of valuable and easily used routines in both the Basic and KERNAL ROMs available to help perform the necessary function. You may have already seen and used by *LINE INPUT* routine (in a previous issue) which uses this concept to effectively give the C64 what amounts to a new Basic keyword.

Of course there are now a number of after-market products which can give you what you need, especially in the area of disk management, some of which are cartridges or alternative ROMs, and some of which are software packages. But, if you want to keep your C64 as standard as possible, for whatever it is you want to do, you need something that leaves the memory virtually untouched, is there when you need it, and remains unobtrusive and out of the way at all other times.

This is *DOSMAN* (Disk Operating System Manager), originally written to provide the C64 with the ability to recognise that disk drives exist, but not alter it so much that I cannot use my little machine code or modified Basic routines. In essence it is similar to something once provided on a utilities disk supplied with a new 1541 disk drive (are they still?), and is primarily meant to be an aid for the Basic programmer.

Isn't the C64 a wonderful machine? Writing *DOSMAN* was so much easier than expected that I spent the extra time and effort adding some extra utilities that I was sure would prove very useful while editing Basic text and developing a program. Okay, so I've been spoilt having got used to using an IBM PC, but I didn't see why my Commodore couldn't do the same sort of things. Consequently *DOSMAN* is now accompanied by a group of useful utilities which don't actually have anything to do with disk management, but which make editing Basic a whole lot easier and quicker. These include a customised Non-Maskable Interrupt (NMI), programmed function keys for implementing the most of ten repeated Basic commands used during editing/de-bugging, and an *OLD* routine. For convenience many of these have similar syntax to the old DOS 3.1 on the 1541 utilities disk, and *The Final Cartridge*.





```

04 400 DATA1,141,13,000,141,0,0
    001,078,13,000,078,13,000,1
    00,00,141,1400
06 450 DATA2,3,000,000,001,01,
    3,000,1,141,00,000,000,70,100
    ,100,1000
08 500 DATA3,000,100,1,1,000,00
    ,00,01,100,100,0,00,000,100
    ,0,0,0,1000
10 550 DATA4,000,00,00,1,000,00
    ,0,00,000,000,00,00,000,000
    ,000,1000
12 600 DATA5,00,000,000,70,100
    ,0,100,0,70,00,000,100,0,141
    ,100,1000
14 650 DATA6,70,110,000,000,0,
    141,010,000,70,110,000,100,
    ,1,001,100,0000
16 700 DATA7,00,100,0,00,110,
    000,100,000,000,100,100,000,0
    ,000,100,01000
18 750 DATA8,000,0,100,100,0,
    3,100,000,70,1,1,000,100,70
    ,00,010,1000
20 800 DATA9,100,00,100,00,00,
    100,100,00,00,100,00,100,000
    ,001,100,0000
22 850 DATA10,10,001,10,000,0,
    000,00,70,100,000,100,00,70,
    100,000,1000
24 900 DATA11,110,000,001,0,0,
    0,0,0,70,100,000,000,00,100,
    000,00,0000
26 950 DATA12,000,70,100,000,0,
    0,110,0,00,110,000,100,000,0
    00,100,100,0000
30 1000 DATA13,00,000,000,100,100,
    100,0,100,100,141,110,000,10
    ,0,0,000,00,0000
32 1050 DATA14,00,100,0,100,0,
    100,000,000,00,100,0,100,0,
    000,000,000,100,110,000,100,
    70,100,70,0000
34 1100 DATA15,100,000,70,00,000
    ,0,00,110,0,00,110,000,100,0
    ,0,000,1000
36 1150 DATA16,100,100,00,000,1
    00,100,100,1,100,100,100,10,
    100,00,100,0000
38 1200 DATA17,00,010,000,70,0,
    000,70,00,000,0,0,0,0,0,0,11
    00
40 1250 DATA18,000,000
42 1300 DATA19,000,000,000,010,0,
    00,000,000,000,000,0,0,0,0,0
    ,0,0,1000
44 1350 DATA20,00,00,0,0,0,0,0,
    0,0,0,0,0,0,0,0,0,0,0,0,0,0,
    0,0,0,0,0,0,0
46 1400 DATA21,0,0,0,0,0,0,0,0,0,
    0,0,0,0,0,0,0,0,0,0,0,0,0,0,
    0,0,0,0,0,0,0
48 1450 DATA22,0,0,0,0,0,0,0,0,0,
    0,0,0,0,0,0,0,0,0,0,0,0,0,0,
    0,0,0,0,0,0,0
50 1500 DATA23,0,0,0,0,0,0,0,0,0,
    0,0,0,0,0,0,0,0,0,0,0,0,0,0,
    0,0,0,0,0,0,0
52 1550 DATA24,0,0,0,0,0,0,0,0,0,
    0,0,0,0,0,0,0,0,0,0,0,0,0,0,
    0,0,0,0,0,0,0
54 1600 DATA25,0,0,0,0,0,0,0,0,0,
    0,0,0,0,0,0,0,0,0,0,0,0,0,0,
    0,0,10,0,0,0,70,70,00
    ,00,10,0,0,70,00,00,000

```

### - LOAD & RUN

< filename > - Load filename from current device into Basic memory and RUN it immediately afterward. If a **LOAD/ERROR** occurs it will not be RUN. See above if it is error.

### % = VERIFY

% < filename > - Verify that program currently in Basic memory is the same as < filename > on disk in current drive. If the verify is successful they are the same; no message appears between **VERIFYING** and **READY**. If they are not the same you will get **VERIFY ERROR**.

### ! = APPEND

! < filename > - Since the **KERNAL** load routine is capable of **LOADING** to anywhere in memory, there's no reason why you can't include this very powerful utility. Armed with the **!** command it is now easier to create a library of Basic program modules, or to write a program in pieces, each tested and debugged individually, as this saves time and is more convenient, and is less confusing. It also encourages structured programming, writing each piece of a program as a subroutine. The important thing to remember about **APPENDING** though is that you must ensure that the next block of Basic text appended has higher line number than that already in memory. It won't prevent a being loaded but the interpreter can't access the lines above the point where lower numbers are found. If a **LOAD ERROR** occurs, then you've got a slight problem - the append process starts by decrementing the Basic variables pointer **PARTAB** by two, to bring it in line with the true end of the program in memory and to use it as a starting address. If the load failed and **APPEND** is re-attempted, **PARTAB** is further decremented by two. If at the second attempt the load was successful, the new data will crash over the end of the already existing program. To prevent this re-define **PARTAB** with the **OLD** routine, before re-attempting **APPEND**.

### - SAVE

< filename > - Save program in memory as filename to current drive. The **DOCS** error message follows automatically. If the save failed it would be **FILE EXISTS** for example. Note **PARTAB** is used to indicate where the end is. If its value has altered for any reason (actually a surprisingly common occurrence, and not just through using non-standard methods like programmed **APPEND**) then either not all of the program will be saved (**PARTAB** fails short) or some of the variable storage area will be saved with it. Ever loaded a program, **RUN** it and have it crash? On **LISTING** it's found to have turned into gibberish? This is the kiddie at fault. The **OLD** routine will make it too the line through.

### Warning

All of the **LOAD**, **LOAD & RUN**, **VERIFY** and **APPEND** functions have the effect of redefining **PARTAB**. This is done correctly unless an error occurs. If for example a verify fails, **PARTAB** will end up reflecting the point where the end of the program verified on disk would have been if it had been loaded, and not where the program in memory is now. If a **LOAD** failed then it will have a stupid value, like an address in zero page memory (uhh). But good old **OLD** will come to the rescue. Also all **LOAD**, **VERIFY** and **APPEND** processes retain **BASIC** lines and perform an automatic **CLR** on completion.

### The Function Keys

Ignored in program mode after RUN (normal ASCII value intact for program), but not after [STOP] and CONT have been used, nor if GOTO used instead of RUN.

#### F1 Prints LIST[RETURN]

LIST all of program in memory from start.

#### F2 Prints LIST[SPC]

Prints LIST and waits for line number(s) to be added.

#### F3 Prints RUN[RETURN]

RUN program in memory from start.

#### F4 Prints GOTO[SPC]

Prints GOTO and waits for line number to be added.

#### F5 Prints CONT [RETURN]

Since a single press of the [STOP] key causes the interpreter to break out of the program to direct mode while running, why not also have a single key press to make it CONTINUE where it left off?

#### F Prints SYSS[IN][RETURN]

Run the OLD routine.

#### F7 Prints SYSS[OUT][RETURN]

Switch TRACE ON. This powerful debugging aid has the effect that whenever the interpreter comes upon the beginning of a fresh Basic line to be processed (not one it's doing already) the Basic line number will be printed on the screen and enclosed in square brackets. While running the program the screen will pretty soon fill up with numbers, displayed across the screen continuously (not on separate lines). The process can be slowed using [CTRL] or stopped with the [STOP] key, such that the line numbers can be examined to see which bits of the program are being executed, including those which are but shouldn't be, and those which should be but aren't will be conspicuous by their absence. It will show you where the program is getting stuck in an endless loop, for example.

TRACE ON is also active in direct mode, and any Basic commands used in direct mode will be preceded by a rubbish number, but this doesn't matter, it doesn't prevent normal use.

#### F8 Prints SYSS[IN][RETURN]

The line TRACE utility is switched off.

### The Custom NMI

You may know that the [RUN/STOP/RESTORE] keys cause a Non-Maskable Interrupt and produces a warm start to Basic. They usually have to be used when [STOP] alone won't work, like when the MPU has got lost in a machine code routine, or if a peripheral has hung up (this also hanging up the CH4), and even for getting out of a Basic INPUT loop to direct mode. The "warm start" includes reformatting certain registers and rewriting the memory map to ensure both ROMs are accessible, which is fair enough, but it also clears the screen and resets it to its default line column, which is a nuisance if you still want to see the text that was on it and if the colours have been re-defined by your

```

10 100 DATA 0,0,00,00,70,13,0,7
1,70,04,70,30,0,07,70,70,000
90 100 DATA 13,0,00,00,00,00,
00,00,07,00,13,0,0,0,0,00
10 100 DATA 0,0,0,00,100,170,70,
00,100,0,0,100,00,100,00,
100,1000
20 100 DATA 0,217,000,100,000,
100,000,100,000,000,000,0,
0,0,0,0000
30 100 DATA 0,0,0,0,0,0,13,70,70,
00,00,00,00,00,00,01,700
40 100 DATA 0,0,0,0,0,0,0,0,
70,000,000,100,0,000,000,100
0
50 100 DATA 0,100,100,000,10,0,
00,100,000,100,100,000,70,10
0,000,100,100,0000
60 100 DATA 0,0,00,100,000,1,1,
001,000,000,0,001,100,000,00
,000,0,0100
70 100 DATA 0,001,000,000,000,0,001
,100,000,10,100,000,000,0,001
,00,001,0010
80 100 DATA 0,17,000,10,000,10
0,100,000,100,000,00,100,0,0
9,100,0,0000
90 100 DATA 0,100,0,100,00,40,0,
70,100,0,000,70,100,0,000,70
,00,1000
100 100 DATA 0,110,0,000,0,70,00,
000,170,100,000,100,100,00,
100,000,0000
110 100 DATA 0,110,100,00,1,
00,000,00,100,000,00,000,000
,001,10,000,0000
120 100 DATA 0,00,171,000,70,10
1,0,0,00,00,000,000,00,000
,110,001,0001
130 100 DATA 0,000,00,00,100,000
,70,100,000,100,0,00,000,0,0
0,101,0000
140 100 DATA 0,00,100,000,00,0
,000,000,00,100,000,00,000,00,0
,00,100,00,000
150 100 DATA 0,000,00,177,000,1
00,011,100,000,00,100,000,10
0,0,100,00,0010
160 100 DATA 0,00,100,000,00,0
0,100,000,100,000,00,100,000
,70,10,0,0000
170 100 DATA 0,100,000,0,000,0,
0,100,0,101,000,00,100,000,00
,000,000,0000
180 100 DATA 0,000,000,00,100,0,
00,100,000,100,000,00,100,0,
0,100,000,0000
190 100 DATA 0,100,0,100,000,100
,100,100,000,100,100,000,100,
100,100,70,1000
200 100 DATA 0,100,000,000,70,00,000,00
,100,000,100,000,000,100,000
,100,000,000,0000
210 100 DATA 0,100,100,00,100,100,
000,100,100,00,100,100,000,100
,100,000,000,0000
220 100 DATA 0,000,000,000,00,100,0,
00,100,000,100,000,000,100,0,
0,000,000,0000
230 100 DATA 0,000,000,000,00,100,000,100
,100,000,000,100,000,000,000
,100,000,000,0000
240 100 DATA 0,000,000,000,00,100,000,100
,100,000,000,100,000,000,000
,100,000,000,0000
250 100 DATA 0,100,100,00,100,100,000,100
,100,000,000,100,100,000,100
,100,000,000,0000
260 100 DATA 0,000,000,000,00,100,000,100
,100,000,000,100,100,000,100
,100,000,000,0000
270 100 DATA 0,000,000,000,00,100,000,100
,100,000,000,100,100,000,100
,100,000,000,0000
280 100 DATA 0,000,000,000,00,100,000,100
,100,000,000,100,100,000,100
,100,000,000,0000
290 100 DATA 0,000,000,000,00,100,000,100
,100,000,000,100,100,000,100
,100,000,000,0000
300 100 DATA 0,000,000,000,00,100,000,100
,100,000,000,100,100,000,100
,100,000,000,0000
310 100 DATA 0,000,000,000,00,100,000,100
,100,000,000,100,100,000,100
,100,000,000,0000
320 100 DATA 0,000,000,000,00,100,000,100
,100,000,000,100,100,000,100
,100,000,000,0000
330 100 DATA 0,000,000,000,00,100,000,100
,100,000,000,100,100,000,100
,100,000,000,0000
340 100 DATA 0,000,000,000,00,100,000,100
,100,000,000,100,100,000,100
,100,000,000,0000
350 100 DATA 0,000,000,000,00,100,000,100
,100,000,000,100,100,000,100
,100,000,000,0000
360 100 DATA 0,000,000,000,00,100,000,100
,100,000,000,100,100,000,100
,100,000,000,0000
370 100 DATA 0,000,000,000,00,100,000,100
,100,000,000,100,100,000,100
,100,000,000,0000
380 100 DATA 0,000,000,000,00,100,000,100
,100,000,000,100,100,000,100
,100,000,000,0000
390 100 DATA 0,000,000,000,00,100,000,100
,100,000,000,100,100,000,100
,100,000,000,0000
400 100 DATA 0,000,000,000,00,100,000,100
,100,000,000,100,100,000,100
,100,000,000,0000
410 100 DATA 0,000,000,000,00,100,000,100
,100,000,000,100,100,000,100
,100,000,000,0000
420 100 DATA 0,000,000,000,00,100,000,100
,100,000,000,100,100,000,100
,100,000,000,0000
430 100 DATA 0,000,000,000,00,100,000,100
,100,000,000,100,100,000,100
,100,000,000,0000
440 100 DATA 0,000,000,000,00,100,000,100
,100,000,000,100,100,000,100
,100,000,000,0000
450 100 DATA 0,000,000,000,00,100,000,100
,100,000,000,100,100,000,100
,100,000,000,0000
460 100 DATA 0,000,000,000,00,100,000,100
,100,000,000,100,100,000,100
,100,000,000,0000
470 100 DATA 0,000,000,000,00,100,000,100
,100,000,000,100,100,000,100
,100,000,000,0000
480 100 DATA 0,000,000,000,00,100,000,100
,100,000,000,100,100,000,100
,100,000,000,0000
490 100 DATA 0,000,000,000,00,100,000,100
,100,000,000,100,100,000,100
,100,000,000,0000
500 100 DATA 0,000,000,000,00,100,000,100
,100,000,000,100,100,000,100
,100,000,000,0000
510 100 DATA 0,000,000,000,00,100,000,100
,100,000,000,100,100,000,100
,100,000,000,0000
520 100 DATA 0,000,000,000,00,100,000,100
,100,000,000,100,100,000,100
,100,000,000,0000
530 100 DATA 0,000,000,000,00,100,000,100
,100,000,000,100,100,000,100
,100,000,000,0000
540 100 DATA 0,000,000,000,00,100,000,100
,100,000,000,100,100,000,100
,100,000,000,0000
550 100 DATA 0,000,000,000,00,100,000,100
,100,000,000,100,100,000,100
,100,000,000,0000
560 100 DATA 0,000,000,000,00,100,000,100
,100,000,000,100,100,000,100
,100,000,000,0000
570 100 DATA 0,000,000,000,00,100,000,100
,100,000,000,100,100,000,100
,100,000,000,0000
580 100 DATA 0,000,000,000,00,100,000,100
,100,000,000,100,100,000,100
,100,000,000,0000
590 100 DATA 0,000,000,000,00,100,000,100
,100,000,000,100,100,000,100
,100,000,000,0000
600 100 DATA 0,000,000,000,00,100,000,100
,100,000,000,100,100,000,100
,100,000,000,0000
610 100 DATA 0,000,000,000,00,100,000,100
,100,000,000,100,100,000,100
,100,000,000,0000
620 100 DATA 0,000,000,000,00,100,000,100
,100,000,000,100,100,000,100
,100,000,000,0000
630 100 DATA 0,000,000,000,00,100,000,100
,100,000,000,100,100,000,100
,100,000,000,0000
640 100 DATA 0,000,000,000,00,100,000,100
,100,000,000,100,100,000,100
,100,000,000,0000
650 100 DATA 0,000,000,000,00,100,000,100
,100,000,000,100,100,000,100
,100,000,000,0000
660 100 DATA 0,000,000,000,00,100,000,100
,100,000,000,100,100,000,100
,100,000,000,0000
670 100 DATA 0,000,000,000,00,100,000,100
,100,000,000,100,100,000,100
,100,000,000,0000
680 100 DATA 0,000,000,000,00,100,000,100
,100,000,000,100,100,000,100
,100,000,000,0000
690 100 DATA 0,000,000,000,00,100,000,100
,100,000,000,100,100,000,100
,100,000,000,0000
700 100 DATA 0,000,000,000,00,100,000,100
,100,000,000,100,100,000,100
,100,000,000,0000
710 100 DATA 0,000,000,000,00,100,000,100
,100,000,000,100,100,000,100
,100,000,000,0000
720 100 DATA 0,000,000,000,00,100,000,100
,100,000,000,100,100,000,100
,100,000,000,0000
730 100 DATA 0,000,000,000,00,100,000,100
,100,000,000,100,100,000,100
,100,000,000,0000
740 100 DATA 0,000,000,000,00,100,000,100
,100,000,000,100,100,000,100
,100,000,000,0000
750 100 DATA 0,000,000,000,00,100,000,100
,100,000,000,100,100,000,100
,100,000,000,0000
760 100 DATA 0,000,000,000,00,100,000,100
,100,000,000,100,100,000,100
,100,000,000,0000
770 100 DATA 0,000,000,000,00,100,000,100
,100,000,000,100,100,000,100
,100,000,000,0000
780 100 DATA 0,000,000,000,00,100,000,100
,100,000,000,100,100,000,100
,100,000,000,0000
790 100 DATA 0,000,000,000,00,100,000,100
,100,000,000,100,100,000,100
,100,000,000,0000
800 100 DATA 0,000,000,000,00,100,000,100
,100,000,000,100,100,000,100
,100,000,000,0000
810 100 DATA 0,000,000,000,00,100,000,100
,100,000,000,100,100,000,100
,100,000,000,0000
820 100 DATA 0,000,000,000,00,100,000,100
,100,000,000,100,100,000,100
,100,000,000,0000
830 100 DATA 0,000,000,000,00,100,000,100
,100,000,000,100,100,000,100
,100,000,000,0000
840 100 DATA 0,000,000,000,00,100,000,100
,100,000,000,100,100,000,100
,100,000,000,0000
850 100 DATA 0,000,000,000,00,100,000,100
,100,000,000,100,100,000,100
,100,000,000,0000
860 100 DATA 0,000,000,000,00,100,000,100
,100,000,000,100,100,000,100
,100,000,000,0000
870 100 DATA 0,000,000,000,00,100,000,100
,100,000,000,100,100,000,100
,100,000,000,0000
880 100 DATA 0,000,000,000,00,100,000,100
,100,000,000,100,100,000,100
,100,000,000,0000
890 100 DATA 0,000,000,000,00,100,000,100
,100,000,000,100,100,000,100
,100,000,000,0000
900 100 DATA 0,000,000,000,00,100,000,100
,100,000,000,100,100,000,100
,100,000,000,0000
910 100 DATA 0,000,000,000,00,100,000,100
,100,000,000,100,100,000,100
,100,000,000,0000
920 100 DATA 0,000,000,000,00,100,000,100
,100,000,000,100,100,000,100
,100,000,000,0000
930 100 DATA 0,000,000,000,00,100,000,100
,100,000,000,100,100,000,100
,100,000,000,0000
940 100 DATA 0,000,000,000,00,100,000,100
,100,000,000,100,100,000,100
,100,000,000,0000
950 100 DATA 0,000,000,000,00,100,000,100
,100,000,000,100,100,000,100
,100,000,000,0000
960 100 DATA 0,000,000,000,00,100,000,100
,100,000,000,100,100,000,100
,100,000,000,0000
970 100 DATA 0,000,000,000,00,100,000,100
,100,000,000,100,100,000,100
,100,000,000,0000
980 100 DATA 0,000,000,000,00,100,000,100
,100,000,000,100,100,000,100
,100,000,000,0000
990 100 DATA 0,000,000,000,00,100,000,100
,100,000,000,100,100,000,100
,100,000,000,0000

```

program. It would be nice if it were possible to simply force the machine to direct mode Basic and leave the screen alone, so that we can still read our printed variables, etc.

Did you know that the [RESTORE] key alone is the thing that generates the NMI? Normally nothing apparently happens, because the KERNAL routine handling the NMI first examines the keyboard to see if the [STOP] key is down. If it is, then the screen save is performed. If it's not, then no changes are made and the C64 carries on as though nothing had happened.

The first part of the custom NMI routine is a duplicate of that of the KERNAL NMI Handler, with the difference that if the [STOP] key check is false then our custom interrupt is performed. If the [STOP] key is down then the screen save is carried out by the KERNAL exactly as standard.

If the [STOP] key is not down then we get instead:

## INTERRUPTED

## READY.

*INTERRUPTED* is printed in yellow, *READY.*, and all further text typed, in white. The screen remains intact and no drastic memory changes are made, other than that the custom NMI vector is reselected (this isn't actually necessary, but the routine is also used to install itself).

Try this:

**POKE 49168,16:POKE 49169,16:POKE 49170,16.**

**Now SYS 49168.**

What's happening now is that the C64 is swapped in an endless machine code loop. Tap [RESTORE] to bring it back. Note your POKEs are still on screen.

## The OLD Routine

Of all the keywords the C64 hasn't got, the one it could really do with is **OLD**. **OLD** is the opposite of **NEW**, but as hinted beforehand, it's not just a means of recovering a listing that has been **NEWEd** by mistake. Whether **NEWed** or not, it effectively cleans up a Basic program in memory by re-chaining it and redefining its pointers. It doesn't seem likely that these should be corrupted but it can happen in the process of constant text running and re-editing, and particularly where lines are added or deleted without typing CLR first. In these circumstances it is possible for poor old **VARFAD** to get a bit confused, resulting in the interpreter trying to make sense out of something which is actually a variable, or a large chunk of rubbish appearing between the end of the program (usually terminated properly so it RUNs OK) and the variables, and which is **SAVED** with the program! It's happened to me several times.

If **NEWed**, the listing hasn't actually disappeared. All that's happened is the first two bytes of its storage have been moved, and two zero bytes in a position where a pointer to next BASIC line should be seen end of program. The **"OLD"** routine inserts a dummy value in these, which doesn't matter as the BASIC routine routine is then called to sort it out.

It gets better. Try this - load a program with / filename and press the reset button if you have one, or else type **SYS 64738** (ensuring that the machine will reset in standard form). Either of these actions simulate a 'cold start', what you get when you switch on the C64. I bet you think everything has been wiped out, doesn't you? Not so. It's true that one of the functions of the 'cold start' is to perform a memory test, but this is of a non-destructive nature and in any case is only used to find out where the Basic ROM is so that the top of Basic memory can be defined. In actual fact the only way to erase the memory completely is to switch the machine off.

Now type **SYS 52197**.

Look, you didn't get a 'warm start' (like [RUN/STOP][RESTORE]) so the **OLD** routine is still there. Now LIST. Hey presto, the Basic program is still there too! Now you can get out of major problems with the reset button and not lose everything.

So that's **DOSMAN** et al. It's highly probably that you may quickly feel helpless without it. I know I am.

## DOSMAN Memory Map

SCA45	51781	DOPUNC
SCAC4	51808	PURKEY
SCADA	51830	FLINT2
SCAEP	51991	TRACON
SCAF2	51954	TRACOF
SCB01	51989	ONMSG
SCB0C	51980	OFFMSG
SCB48	52040	OUTMSG
SCB5A	52050	ENTRY
SCB78	52080	SMICUS
SCB85	52197	OLD
SCD08	52214	DOSMAN
SCD09	52217	VECTAB
SCC13	5224	COMTAB

Entry for custom IRQ. Test if function key down, and process as necessary. If not service IRQ as normal.

Copy string pointed to by x, y into keyboard buffer until closing 'Q'.

"SYS185@RETURN"Q.

"SYS185@RETURN"Q.

SYS here for [TRACE ON].

SYS here for [TRACE OFF].

↑TRACE ON]Q.

↑TRACE OFF]Q.

Print string pointed to by x, y all closing 'Q'.

Display BASIC line No. while  
↑TRACE ON]Q.

Install/refresh/perform custom NMI.

SCBCJ 52663 BR@CEJ  
Install/refresh custom IRQ for  
function keys.

SYS here for "OLD" routine.

SYS here for install DOSMAN,  
custom NMI and function keys.

Primary DOS command jump  
table.

List of primary DOS commands.

SCCIB	52251	BUFFER	DOSMAN input buffer.
SCCTJ	52339	FLAG	Mode flag for LOAD/LOAD & RUN/VERIFY APPEND.
SCCT7	52343	DEVICE	Copy of current device number.
SCCT9	52345	Temporary storage of disk directory sector count.	
SCCT8	52347	BASTAB	"LIST@RETURN"Q; "LIST"Q; "RUN@RETURN"Q; "GO"Q; "CONT@RETURN"Q; "SYS291@RETURN"Q.
SCCA6	52392	GETVAL	Get numeric value from BASIC line into \$14 - \$15 hex.
SCCB0	52400	FLIST	Table of BASTAB address pointers.
SCCCB	52427	NFWWRD	"INTERRUPTED"Q.
SCCDE	52446	CODE	Storage of code to wedge CHRGET.
SCCEJ	52449	INSTAL	Wedge CHRGET and install DOSMAN.
SCCFJ	52467	ENTRY	CHRGET jumps here to test for DOS commands.
SCD15	52553	COMM	Process recognized primary DOS command.
SCD1D	52541	GETERR	Get and display current device error message.
SCD68	52584	SENDCH	Send command string in buffer to current device.
SCD6E	52590	READ	Input BASIC line into buffer.
SCD6S	52645	GETCHR	Just like CHRGET, but doesn't ignore colons.
SCD8A	52666	CHADRU	Change current device number in memory.
SCDCA	52682	RESTOR	Restore CHRGET to normal, dis- ables DOSMAN.
SCDDC	52708	GETDIR	Get and display disk directory from current device.
SCEN	52813	LOADL	Load BASIC prog.
SCEP	52841	LOADR	Load and run BASIC prog.
SCET	52849	LOADU	Verify BASIC prog.
SCELD	52896	LOAD/ LOAD & RUN/ VERIFY/ APPEND error handling	
SCECA	52938	APPEND	Append BASIC prog. to memory.
SCFC		SAVE	Save BASIC prog. in memory to current device.

# RESET CIRCUIT

Make your own reset  
circuit easily and  
cheaply

By B. Leerkotte

One of the most infuriating design faults of the C64 is that Commodore omitted a reset feature. If you do not own a suitable cartridge, you are constantly at the mercy of power surges and power losses. How many times have you 'lost' that all important program (the one that you have not bothered saving yet)? If you are one of those unfortunate, then this article is for you. I will show you how, with a little effort, you can build your own.

The reset is achieved by pressing the restore key for approximately 5 seconds.

The circuit must be installed in the RE-circuit which normally triggers the reset-timer U20. The circuit replaces the resistor R50 (1M $\Omega$ ).

## The theory

The moment that the Restore key is pressed, capacitor CR1 is charged by way of resistor RR3. The voltage on the trigger-input R of U20 will fall. When that voltage reaches the trigger voltage of 1.5V, the timer U20 gives a reset pulse.

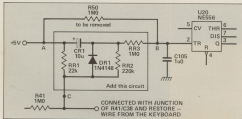
If the Restore key is released before U20 triggers, capacitor CR1 will be discharged rapidly in approximately 0.5 seconds. Therefore, it is impossible to reset the C64 by repeatedly pressing the Restore key; the Ram/Stop-Restore Non Maskable Interrupt will function as before.

## Installation

The circuit is reliable and is easy to build on a square-pad board. It is also easy to install into the C64.

Remove resistor R50 (1M $\Omega$ ) and connect wire A to the left solderpoint which carries 5V. Wire B is connected with the right solderpoint (see diagram). Point C must be connected with the right side of resistor R41. Now point C is connected the Restore key.

You should now have a functional and reliable reset source.



# WHIPCRACKAWAY

**Commodore Crusader Kevin Crosby dons his hat and bullwhip to report on the latest installment in the Indiana Jones saga**

**Left:** Indy (Harrison Ford) prepares himself for action. Life as an archaeologist is not all slugging.



**Above:** Things heat up for messers Jones and Jones.

**"Somehow the audience always seem to be able to go 'ugghh yukky-poo' whilst still keeping a smile on their faces."**



**Above:** "Last one in the pulp is a rotten turkey!"

**P**how! I've just come back from my local (cinema, not pub - this time!) and what a film!

I am, of course, referring to the third and reportedly the final film in the Raiders series - Indiana Jones and the Last Crusade.

Once again Harrison Ford plays the slightly asunderbored Archaeologist cum Grave Robber who stops at nothing to claim the ancient treasures he seeks. This time though we have a second Dr Jones to deal with in the form of Sean Connery, who plays Indy's Father Henry.

"Crusade" fits in around the previous two films Raiders of the Lost Ark and Indiana Jones and the Temple of Doom. The first part is set in 1912 where a Boy Scout sized Indy (played by River Phoenix) has one of the first adventures in his career. These scenes do an excellent job in tying together some of the mystique in Jones' past like his choice of bullwhip as his main weapon, his fear of snakes and the curious scar on his chin, etc. Nice touch that I thought.

The action soon works its way up to 1938 where the Harrison Ford-aged Indy realises the crucifix which was denied him 26 years previous, not for personal gain but for the good of the Institute that he teaches (how noble!). However events take a turn for the worse when Indy receives his father's notebook on the whereabouts of the Holy Grail - the fabled chalice that gives the holder a prize even better than a year's subscription to *Your Commodore* - the gift of eternal life.

As this quest was his life's obsession Indy is understandably puzzled as to why his Father has sent it to him. Things soon fall into place when an American Art Collector by the name of Walter Donovan (played by English actor Julian Glover) informs Indy of his Father's disappearance and asks for his help in finding him by tracing the route mapped out in the notebook. There are, of course, some vital pieces of information missing which Indy must find out before he has a chance of finding his Father.

This initially takes Indy and his Cousin Marcus Brody (played once again by Denholm Elliott) to the town of Yaxos where they meet up with Elsa, the token female in the film (played by the stunningly attractive Alison Doody) who once helped Jones the Elder on the same journey before his kidnap. And, as is customary in an Indy film, gruesome scenes involving creatures which many would not exactly trade their Carc Bears for (in this case Rats) are used, but somehow the audience always seem to be able to go "Uggh Yukky-Poo" whilst still keeping a smile on their faces. A quality present in little other than Spielberg films.

Anyway, one thing leads swiftly to another and Jones the Younger is off to the mountains of Austria to rescue dear old Dad and to help him fulfill his life long ambition - To find the Holy Grail.

Once father and Son are reunited they very quickly become one of the silver screen's most endearing family teams. You could certainly tell that both Sean Connery and Harrison Ford were really enjoying themselves whilst making this film. I expect to see more films, not necessarily in this series, with Ford and Connery teamed up as they certainly work well together on screen.

Excellent performances too from Denholm Elliott and Julia Klayz Davies who both recreate their characters from the first film. Nice to see them back.

No prizes for working out that good triumphs over evil but in this case of film you don't sit there wondering who will win just how they win.

As is to be expected the stunt work and set pieces are just as good, if not better, than their predecessor's although I have to admit that the special effects were more noticeable in this particular installment especially during the scenes involving the Zeppelin and the aerial dogfight.

However, that gripe aside, a positive thumbs up for Indiana Jones and the Last Crusade. It has succeeded to capture much of the atmosphere of the first film whilst not forgetting the humour that was much more prevalent in the second.

Messrs. Spielberg and Lucas deserve several dozen Browie points plus a free subscription to *Your Commodore* (what such! - Ed) for their sterling efforts.





# AMERICAN INDOOR SOCCER

Soccer in the states is mostly played indoors by six-a-side teams. Here's your chance to play, manage and coach in the American indoor league.

Mindscape - £14.99 Disk

**T**HE American Indoor Soccer is the only way to play soccer in the US but this doesn't mean that it lacks any of the skill or excitement of the 11-a-side game. In fact, it's faster and more exciting on the players, but you'll find you can substitute as well to keep the action fast and furious. However, selecting subs is the only job for you in this game. You can also act as centre forward, goalkeeper, centre midfield and general manager.

At the start of your campaign the role of general manager is the most important in your squad as it is for the rest of your American group and the twelve team league. If you're going to have any chance of reaching

the end of season playoffs you must check for able players. As you begin the game you have 250 trading points to either train your team or trade for a better player with a skill level between 75 or 100 which would give you better than your present average of 65 to 70.

On the field you can dribble, tackle and shoot as you would in any other football game, except that your forwards can head the ball and show off with overhead kicks although the play can be broken up by entirely random penalties, falling over the best laid match plans.

Whenever there is a free kick or when the keeper gathers the ball, the coaches'

screen appears which allows you to make substitutions and decide attack and defence tactics, ranging from pass to shooting for the forwards and all other things to support the attack for the defence.

The game shows a lot of promise but it may allow you some leeway to you. Particularly if you've played *Granite's Gate*, *Linearity*, *Supernova*, *Section 8* and *exactly the same* other excellent. The only criticism being the number of players on the pitch. This is because the game doesn't have a screen produced both games play a theme, they don't have two different games.

*SpaceFire*, the game developer, also made *Indoor Soccer* and *Clubhouse Soccer*.

## INFO

Gameplay: 50%  
Graphics: 46%  
Sound: 35%  
Lastibility: 40%  
Overall:  
43%

Tony Hetherington



# INDIANA JONES THE LAST

The man in the hat is back again and this time he's brought his dad! That's how they trailed the latest adventure of Indiana Jones. Now it's a computer game.

Lucasfilm (US Gold) - £24.99

Below: The cross of Coronado? Is that the same as the Walford Cross?

INFO

Gameplay: 65%  
 Graphics: 60%  
 Sonics: 45%  
 Lastibility: 55%  
 Overall:

56%



cross of Coronado. While their backs are turned Indy grabs the cross and runs. On screen the caves are full of platforms, ropes to climb and bad guys armed with guns. If you're going to survive you'll need torches so you can see where you're going and whips to battle your way through to the exit. Then the chase continues on top of a circus train packed with really wild animals. This is where Indy learns to use a whip for the first time.

It is now 1938 and Indiana Jones is racing the Nazis to find the Holy Grail. His only clue is his father's Grail diary that leads them both underground into the rat infested crypts of a Viridian church where they hope to find the grave of a Grail knight. After starting a ruse to rescue his dad, and escaping in a Zeppelin, Indy arrives at the final and best part of the game as he enters

**Y**OU'VE seen the film now play the game, that's the message from Lucasfilm as it launches a platform style arcade game for the Amiga, with other versions to follow

shortly. This is, in fact, just one of two games that will be based on the film, the other being an arcade adventure produced by Lucasfilm.

The arcade game is based on five sequences from the

film and plots Indy's progress from a scout through to his final crusade for the Holy Grail. As the game opens he has just entered the mine complex in which thieves are stealing the silver

# ONES AND CRUSADE



the Grail Temple. Here he must pass three challenges called the Breath of God, the Word of God and finally the Path of God. These challenges become puzzles that must be solved with your joystick if you are to reach the Grail.

Lucasfilm hasn't taken any chances by using the tried and tested platform style of game but with the whip cracking action it seems to suit the style of the film. Add a reasonable rendition of the Indiana Jones theme and you've got a game that's a lot of fun to play.

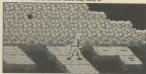
**Tony Hallowington**

*Lucasfilm is the software production part of the company owned by George Lucas, who is one of the cinematic moguls behind the film.*



Above: Everybody's got skeletons in the closet.

Below: What an athletic fellow Indy really is.



Above: Indy in his Great Rocks.

Below: Underneath the arches!



**Cartoon Capers  
and animation antics  
abound with this latest  
release from Magic Bytes**



**A**NYONE who has read more than a few of my reviews will know that I have little time for licensed games. All too often, money that could usefully have been used in developing the product is spent on acquiring the rights to a film, television series or whatever. And the amounts that we are talking about are not peanuts.

The latest licensed title to come my way is Tom and Jerry from the German Company Magic Bytes and I am afraid that it does little to improve my above mentioned view. Just the opposite in fact.

The idea behind the game follows that of the cartoons reasonably well. Mouse goes looking for food. Cat sees mouse. Cat chases mouse. Cat catches mouse. Mouse escapes. Cat gets his companions.

Here, Jerry is out looking for lumps of his favourite cheese, scattered around five different rooms. He has to collect as much as possible in the allotted time, beating off hordes of furniture in the manner of the platform days of old. The rooms are connected via a series of

tunnels where you can gain or lose extra time by picking up either cheese or explosives.

Tom on the other hand is doing his best to stop Jerry by grabbing him whenever he can causing Jerry to lose 30 seconds of his time allowance. Jerry can drop things on Tom's head to keep him quiet for a while or can distract him by, for example, turning on the television.

Jerry's favourite cheese is full of holes. Unfortunately, the gameplay suffers from a similar problem. To start with, there is no scoring system in the game. Apart from there being no incentive to play, you have no idea

as to how well or badly you are doing. This in turn affects other elements of the gameplay. For example, it now becomes pointless to try to stop Tom. The time spent in setting up an 'accident' could better be spent trying to pick up more cheese.

The tunnel sequence does not work at all well at all. The dynamic explodes as soon as you look at it, let alone touch it. Trying to jump past the furniture is a lottery. Identical pieces may make you climb over them or allow you to walk underneath them. When Tom catches you, you get repositioned randomly on the screen that you are on. It is

quite possible that you will be put in a dead end and have to wait for Tom to come and kill you again - a wonderful bit of game design I don't think.

The manual has been translated from the German by someone who can't speak English. It is littered with spelling mistakes (as is the game) and two of the pages are printed out of order.

I can't write any more mainly because I don't know that many bad words. All I can say is I don't waste your money.

**Magic Bytes -  
£9.99 Tape,  
£14.99 Disk**

**INFO**

**Gameplay: 15%  
Graphics: 55%  
Sound: 40%  
Usability: 20%  
Overall:**

**33%**



Alas, but Jerry you can't drive, you're only a mouse



Above: You shall have a fishy...



Above: No, it's not Kabalandscape simulator!

**T**HE summer season had come to Amity island and thousands flocked to its beaches unaware of the terror that swam just below the calm sea. A great white shark was now feeding in these waters and it was feeding on people.

At first they thought the victim's wounds were caused by boating accidents but now you, Hardy - Chief of Police, the job of ridding the island of this menace. Together with Quint, a shark fisherman, Hooper, a shark expert, and three expert divers you set off to kill jaws. Unfortunately, the special gun and its bullets that will kill the monster shark were on a boat that struck the reef and sank, so your first task is to dive down into the dangerous waters and find them. To add to your troubles Mayor Vaughn has refused to close the beaches and hopes to cover it up until you kill the shark, but you

must hurry, if seven swimmers are chopped you'll be sacked and the game will be lost.

One by one, your six divers climb into the diving bell and dive down into the depths of the reef to search for the four parts of the gun and the four super bullets that will kill Jaws. This isn't easy as the waters are teeming with hostile plants and fish out to eat you, if you think they're trouble just wait until you see Jaws. Luckily you'll also find useful objects to help you, such as extra air to top up your dwindling supplies, mines and bombs to clear caverns, bullets for your gun and treasure to add to your score and collection.

Eventually you'll gather all the gun bits and ammo you need but your challenge is far from over as you have score three hits on the great white shark or start all over again.

The game is quite fun to play but there's one thing I can't understand; why has Screen 7 gone to trouble of getting the rights to a film and then produce a game that has little to do with it? Tony Hetherington

**At last, the cult film of the seventies that terrorised countless cinema audiences has now appeared on the computer screen.**

**Screen 7 - £9.99**

*Jaws is the debut game from new software house Screen 7.*

#### INFO

Gameplay: 65%

Graphics: 43%

Sonics: 38%

Lastability: 64%

Overall:

53%

# LIFE AND DEATH

Has the NHS fallen so low that they'd let a complete lunatic like Duncan Evans into the wards? Oh no, they have.

Mindscape - £29.95 Disc

There's no need to be afraid dear, this won't hurt at all... Aaaaarrggghhh! Oops, did I forget to turn the gas on? My mistake, still, she was getting on, and we did need the beds.

Every fit you ever had about going into hospital is going to be realised when you play *Life and Death* by Software Toolworks. Thankfully in this game you are that mad-eyed surgeon, and it's the other patients who are there to suffer. And suffer they do, as you blunder through medical training, leaving the wards empty and the morgue packed.

*Life and Death* is all about surgery, progressing from being a naive scalpel apprentice, to mastering the apprenticeship before assaulting that greatest of organs, the heart. Still, it'll take you some time, and loads of patients, before you get that far.

It all starts with you signing in at reception, under the watchful eye of Monica, before heading to the staff room to pick up your accoutrements for the

rooms of doom, aka the operating theatre. There are six persons on hand in total, each represented by a file and digitised pic, of which you must pick two.

Then you're off to the classroom for an introductory speech, and a few hints and tips on general surgical practices.

After answering a phone

call, which doubles as the copy protection scheme, you get your first patient. Time to don the rubber gloves and face mask that come with the game! First examine the poor thing by prodding them in every section of their midriff and abdomen - if there's any pain there a sampled signal testifies to it.

Have a look at their

record chart and look up the symptoms, and decide whether to operate, administer antibiotics, refer them



# EVER PLAYED A MULTI-PERSON COMPUTER

# EATH

to another doctor, go to X-ray, observe or use the ultra scan. For the first half of a dozen patients you'll probably make the wrong choice and end up back in the classroom being told so. At

least you'll know better next time, and your victims never get a second opportunity.

Eventually you'll get a case where you have to operate, and this is where the real fun starts, as it involves injecting drugs to counter blood pressure loss and heart wobblin, setting up gloves and blood drips, and

using all manner of fiendish implements to peel back layers of flesh as you head for the appendix.

The trouble is in finding the damn thing, and avoiding cutting into the Colon, which is messy. If you have a mouse connected to your PC it makes for easier surgery, as you often have to react very quickly.

There is a kind of perverse fascination in this game, the slice and dicing,

where the demise of a patient is simply irritating, and the pleasure comes from seeing how far in you can get before cooking it all up.

The COA four colour graphics are excellent, and are wonderfully complemented by the sampled screams, and the best news is that the Amiga version should be ready about now.

## INFO

Gameplay: 87%  
 Graphics: 85%  
 Sound: 73%  
 Usability: 80%  
 Overall:  
 86%

*Software Technology is best known for its Christmas 2000 and 2000 programs, and is promising a brain surgery sequel to Life & Death.*

### Profile of Dr. Ken Shepherd

**Technical:** Dr. Shepherd's area of expertise is cardiovascular. During an operation, he will keep an eye on the patient's ECG. When the ECG becomes abnormal, he will follow the surgeon and recommend a course of action.

**Personal:** Dr. Shepherd gets along with most of the other staff members. He works particularly well with Kimberly Brewer.

Ken Shepherd  
 Title: Cardiologist  
 Specialty: Cardiology

Left: Slice, main and chop. All in the name of medicine, of course. Now, where did I place that kidney?





**S**ET in Paris the game puts you in charge of a six-man assault team containing three commandos and three marksmen. Your targets are terrorists that have seized an Embassy and it's your job to rescue any hostages.

In a two-stage game you must set up your marksmen before sending in the commandos. However, the ter-

rorists have the surrounding streets covered with searchlights so your marksmen must run, crawl and crouch in and out of any shadows that come to the windows. However, you must be sure that they're terrorists and not hostages before you open fire. Once the immediate area is cleared you can send in the heavy units.

The commandos enter the building by shelling from the roof and climbing through the windows. They must then clear the rooms of terrorists. Inside, the screen changes to show a 3D view of the room or corridor you're currently in and a map that plots the terrorist's movement. Now you have to think quickly to gun down terrorists while avoiding any injury to the hostages. When you find a hostage you must escort him to a safe room on the third floor and protect them from terrorist attack by moving in front of your team. As in a real assault good tactics and the speed and skill of your team will decide the outcome. Perhaps the toughest challenge is when a terrorist is hiding behind his hostages. These you have to make your shots count and that will take some practice.

Several levels of difficulty and the ability to play either half of the game separately will ensure you'll keep coming back for more. Tony Heberberger

## INFO

Gameplay: 88%  
Graphics: 72%  
Sound: 32%  
Lastibility: 75%  
Overall:

67%

Ever since the SAS stormed the Iranian Embassy in 1980 we have waited for a game that captured the atmosphere of such a raid. Here it is.



Slowly sneak him, Maim him, Murder him. Hang on a sec, that's a hostage! Ah, shoot him anyway...

Below: We'll have no cigarette adverts in this mag.



*Hostages* is the latest game from Infogrames, the company that brought you the wild and wonderful *Captain Blood*.

**Infogames £9.95**  
**Tape, £14.95 Disk.**

Pinball games are few and far between, so any new ones will be welcomed by digital pinball wizards. Unfortunately, this one is way off target.

# TIME

# SCANNER

By Electric Dreams -  
£9.95 tape

**T**IMESCANNER is the long awaited conversion of the successful coin-op based on pinball. In the game you have inseparable tables into a time warp and the only way out is to complete four pinball tables. To add to your problems you have to complete three of them before you get a chance to play the fourth.

Each table has a theme and an objective. For example, on the Volcano table you must light up the letters in the word Volcano by hitting a transparent clear until finally the volcano erupts. Unfortunately, this makes the other targets, bumpers and rollovers quite redundant. The same is also true of the Rain and Sappanah (Egyptian) tables.

Another problem is that the tables are in two halves of a scrolling screen and it's almost impossible to get the ball from the bottom half back to the top. This can be important since the targets you must hit in the Sappanah table are all in the top half of the table; so are the two chutes that transport you to the other tables.

Unfortunately, things get worse as the game's graphics and speed are more in line with a 64K Spectrum game than a 64K C64 and the suspicion must be that all 8 bit versions have been deve-



loped with the Spectrum in mind.

The reward for finally, slowly and painfully completing a level is the release of two other balls so you can play with those at once

(which slows the game down, if that's possible) so that it takes several seconds for a ball to hit the top of the screen and bounce back to the flippers.

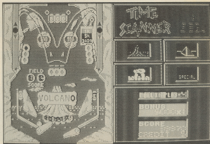
Tony Hetherington

## INFO

Gameplay: 33%  
Graphics: 13%  
Sound: 43%  
Lastibility: 28%  
Overall:  
**28%**

*Attribution has enjoyed considerable success recently with a string of hits. This isn't one of them.*

**Below:** Do you think that this screen is, perhaps, the Volcano Screen?



US Gold - £9.99

As part of the Dungeons and Dragons deal, US Gold has created a game to bring role playing to the masses.

# HEROES OF THE LANCE

**C**REATE a computer game based on Dungeons and Dragons that will appeal to arcade players. That was the challenge put to US Gold as its part of the three covered deal withSSI and D&D authors TSR. This is the result and it's a game that's played entirely with a joystick.

Unlike the other D&D games that are based on the Forgotten Realms, *Heroes of the Lance* is based on the *Descent* series of books and game modules that came about because players of the role playing game demanded more dragons in Dungeons and Dragons. This game features an ancient black dragon called Khisanth who guards the platinum disks of Mishaki. These disks are your only hope of restoring faith in the old Gods and foiling the evil Queen of Darkness' plan to rule the world.

The Disks lie deep in the ruins of the Temple of Xak Tzash which is now rife with Gully Dwarfs, giant spiders, undead and Draconians (a human dragon half breed created by the evil Queen). You control eight brave adventurers although only one appears on the screen at any one time. Your party has the usual mix of fighters and spell casters which, in this game, are given their spell power through two staves. Raialia is the magic user and holds the staff of Magias which has 100 charges and can cast spells such as sleep, magic missile and charm (sapping one charge) and web (for free). Goldmann carries the clerical blue moon staff that



Left: I wonder if the staff of Magias is as handy as the staff of Argus.



Below: Your Commodore - full of interesting columns.

has 200 charges and can cast spells ranging from the ubiquitous cure light wounds (1) to Raise Dead (5) and the useful defint dragon breath (5).

The action takes place on a sideways scrolling screen with a compass that lights up when you reach a junction. This can be a little confusing, but since the game's in real time you haven't time to draw accurate maps. Com-

bat is fast and furious, with joystick movements deciding whether you eat, slash or parry, or fire an arrow; crosshair to a distance attack. Should you resort to magic then the spell bar freezes the game and presents a series of menus from which you can cast spells, pick up, drop and use objects and examine and select items.

Tony Hetherington

## INFO

Gameplay: 67%

Graphics: 55%

Sound: 42%

Lastibility: 48%

Overall:

53%

# TREBLE CHAMPIONS

Challenge Software - £9.95 Tape

And so the footy season starts again. To coincide with this momentous occasion, Challenge Software deals us a dose of soccer management to test even Kenny Dalglish himself.

Challenge Software's first title to come our way is Treble Challenge, a football management game that seeks to expand the foundations laid by Football Manager and more recently, Football Director II. The latter game is a hard act to follow, and the only way to do so would be to better it in every respect. Challenge has succeeded in this with a few features to increase the realistic aspect of games of this ilk.

The goal (no pun intended) in Treble Champions is a very familiar one: win the league division one, the FA Cup and the League Cup (hopefully all in the same season) and thus prove what an outstanding manager you are. This is done by manipulating players, making the transfer market

to improve the quality of your team, and other duties chores performed by top class managers.

Players have skills, age, fitness, and potential, all of which have to be considered in your teaming results. The matches are played with the clock ticking away, and a table contains a record how many goals the two sides in each week's competition. The amount of time and goals that a team has - these also show which player scored and in what minute.

The most unique feature of the game is the fact that you, as manager, only have a set number of hours to perform a weekly task. Different actions take different amounts of time, and once you have run out the more important decisions not undertaken that week will

have to wait. Also new to the genre is the fact you can make tactical adjustments during a match, and appoint your computer opponent.

Penalty shoot-outs are not often included in such strategy games, yet are two legs in League Cup competitions. Treble Champions boasts 4 divisions of 20 teams and over a mid-league division of 20 teams. You can play on any of three difficulty levels, and start in any of the two divisions. Also, all of the teams have named players, which you can approach with the hope of purchasing, but must be done before the transfer deadline.

Preseason during the game is not overly elaborate, but to analyse and summarise. There is a total transfer budget, but on this sort of game that is common. The game is enormous and there are a plethora of options waiting to be explored.

Treble Champions is possibly the most complete football strategy game to date - which is no mean feat, I assure you. It is large, complex and, most impor-

tantly, addictive - qualities which today's soccer games need to have. Until somebody produces an large a game, but with the capability of having such human opponents, Challenge Software is sitting on the best soccer management game, and has a bright future ahead of it.

BB Henderson

Challenge Software is a label for *Real-Of Software*, a company with a very high postage for good quality strategy games. Treble Champions is its first retail venture.

## INFO

Gameplay: 50%  
 Graphics: 40%  
 Sonics: 30%  
 Usability: 40%  
 Overall:

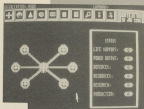
40%



# MILLENNIUM 2.2

Electric Dreams - £29.99

The predictions were right. The asteroid did collide with the Earth killing all life on the planet. As commander of the moonbase only you can save mankind.



Above: It takes a Millennium to play the game.



Left: Look man, this while looks on my computer screen.

**M**OOONBASE II is a small research station with limited production and mining capabilities, a single Mark I energy unit and a population of only 100. Through careful management you must ensure the survival of the race by first establishing the moonbase and then setting up colonies on other worlds.

By clicking on the game icons you should soon be able to start up the colonies, resource plant that mines raw materials these can be used by the production sector to build new energy cells, probes to explore space, modules to support more people (100 each),

fighters to protect the base and bigger and better ships for the expeditions into space.

Just when things seem to be going well, you receive a message from Mars claiming dominance in the galaxy and hostility against any moves you make to expand. Unheeded, you send out probes to search the solar system for a mine or planet to colonise as, by now, Moonbase is overcrowded. Sooner or later the Martians will attack and if you've researched and built fighters or orbital lasers you can try and stop them but you'll probably lose some materials and people in the raid.

Although Millennium

2.2 looks like a strategy game it plays like an adventure and has a series of puzzles that must be solved before you progress. These include the need for raw materials, such as copper, that can't be mined from the moon, the increasing martian attacks and the risk of mutation and alien diseases that can spread rapidly through cargo ships to your other colonies giving you a desperate race against time to research and produce an antidote.

Although this PC version lacks the graphic appeal of others it still captures the feeling of exploring the unknown and the challenge

of ensuring the survival of the race.

Tony Hetherington

## INFO

Gameplay: 68%

Graphics: N/A

Sound: N/A

Usability: 70%

Overall:

69%

Ocean - £24.95

# ROBOCOP

Part film character, part arcade game, all cop. It's the man in a can, and he's gunning for you. If you've been naughty that is.

**I**n case you're ad, see the wonderfully violent film, Robocop, and if you haven't then you should jolly well do so. Well, this game isn't quite based on the film as one might expect, but rather on the arcade game that followed.

After seeing the disappointing ST version (the Amiga one should be out now), I was dreading seeing what Ocean could do as a PC. Surprisingly, the PC version is miles better than the ST game, and authentically replicates the arcade game.

You play Patrolman Murphy, once flesh and blood, horribly blown to pieces by gangsters, who are savagely led by one of the senior officers at OCP. Murphy was scraped up, cloned, and reprogrammed for law enforcement. Fortu-

nately, what remains of his mind throws up images of the gang, and he sets out for revenge.

Robocop is a game of many parts and levels (nine in all), and starts by scrolling from right to left, with handbars helping onto the screen, all intent on murdering Murphy into a tin of paint. Armed with a standard pistol, three lives, and an ever-decreasing energy level, you must fight your way through, picking up ammo along the way. Later in the game you get to pick up other weapons, which you'll certainly need considering what you're up against.

At the end of the first patrol there's an almost 3-D section where you have to snuff a criminal who is hiding behind a woman hostage. This is a pleasant break after the first round and a chance

to concentrate before the really offensive criminals on level two, some of whom ride motorbikes.

Level four is a photofit against the time test, with information as to Murphy's killer being the reward. After that it's killing all the way, taking out a drug factory, the giant robot ED209, and a final encounter with the mad scientist Dick Jones in the President's Office.

Robocop isn't an easy game, because poor old Murphy flinches every time a bullet hits him, and while he's doing so he can't fire back. Needless to say there are killing zones at certain points along the way where you are caught in a murderous crossfire, and have great difficulty in getting out with one's left.

The graphics and animation are pretty good which

makes up for the dire sound effects, and with those beam style sections thrown in to break up the action, this is one patrol worth going on.

Duncan Evans

## INFO

Gameplay: 87%

Graphics: 80%

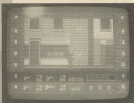
Sound: 20%

Lastibility: 81%

Overall:

84%

With titles like WSC Le Mans, Op Wolf, Robocop and numerous competitors, she's had Ocean's year so far.



Above: Metallic masses in an open city.

# As the sun sets Gordon Hamlett gets funky with his remote-controlled robot.

*Magic Bytes -  
£9.99 Tape, £14.99 Disk.*

**R**ECENTLY qualified from graduate school as a robotics engineer, you have just started your first job. You are working in the cybernetic control centre involved in planetary exploration.

As a beginner, you cannot expect to be let loose on the latest technology from day one. So you are given control of a second rate robot to do your dirty work. The planet to explore isn't what it seems. Real planets being a touch expensive, the company has leased an artificial one consisting of some ten different platforms. The idea is that you guide your robot over the surface trying to find the exit to the next level. Succeed on the first five platforms and you are given control of the latest in robot technology for the next five.

The platforms consist of a series of small mazes with different areas only accessible when you have the appropriate colour coded key. There are craters that shoot at you and hidden mines, all of which is bad news. At the start of the game, you have no defenses at all. You must find your laser and mine detector first. There are also one way escalators and transporter pads to be negotiated.

There is nothing original about *Nightdawn*. Wandering round mazes looking for different keys has been seen many times before and there is nothing extra in this game to make you sit up and take notice.

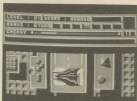
The graphics are poor - fuzzy, blurred and small. Indeed, the Amiga version was similarly disappointing

-looking more like I imagined the C64 version should look.

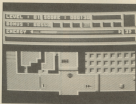
There is nothing particularly wrong with *Nightdawn*, it just doesn't generate any degree of excitement whatsoever. Lasting appeal is limited too. Once you have learned the best path through a particular level - where the traps are and so on, there is nothing to stop you completing that particular level again with great ease, every time you play.

## INFO

Gameplay: 50%  
Graphics: 40%  
Sound: 30%  
Lastability: 40%  
Overall:  
40%



Above: Ouch, what a large metallic spiral



Above: Not so large metallic spiral

# NIGHTDAWN

# THE STORY SO FAR

Elite - £19.99

Only a compilation, or a potted history of Elite Systems work on the Amiga? Duncan Evans gives you the real story.

Compilations are nothing new, and you might say nothing exciting. If you wanted to be really cruel you might also say they were cynical marketing exercises designed to tempt the 'pocket shopper' into buying what young Johnny already had anyway.

Compilations can be value for money, but looking at this one from Elite it appears that *The Story So Far* is a pretty short one. Four games is rather stingy, especially as it doesn't contain one of Elite's better games *Overlander*, or even *Line* and *Let Elite* which the 8-bit packages got.

What you do get are *Buggy Boy*, *Ikari Warriors*, *Battleships* and *Beyond the Ice Palace*. *Buggy Boy* was a 3-D racing game, with five tracks, and loads of obstacles rather than competing cars.

With bonus points, time gates and the ability to drive on two wheels, and then fly through the air, you can see this isn't exactly *Monaco*. It is good fun though, because the tracks are graded in difficulty and even the fading reactions of this old hack are good enough to complete the first three.

*Ikari Warriors* is one of my favourites, being the first arcade Commando style game to feature simultaneous two player action. It isn't stunning on the Amiga, in fact it looks just like the ST version, but it is very playable and features tanks with which you run the goods over, as well as shooting and detonating them.

There's a lot of surface gloss on *Battleships*, but that doesn't cover up for the fact

that this is a very standard conversion of the pen and paper game. I suppose it'll save a few trees, and you can play against the computer should you be so bored.

And finally off we go into arcade adventure land with vertical and horizontal scrolling, three types of weapons, dreadful sound effects, decent graphics and very rough gameplay. Just getting through the first level of *Beyond the Ice Palace* is a major achievement, and when you encounter the even harder guardians of level two you'll realise that this game has never been properly played.

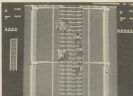
Normally compilations can stand a couple of the games being snaf, or if you already own one or two, but with *The Story So Far* there isn't really any margin for error, and whichever way you look, you're not exactly getting the bargain of a lifetime.

Duncan Evans

## INFO

Gameplay: 82%  
 Graphics: 89%  
 Sonics: 72%  
 Lastability: 84%  
 Overall:  
**80%**

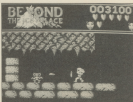
Elite Systems hit the frontlines after running out competing *Overlander* to US Gold's *Koolhauser*, and haven't returned anything more since.



Above: Ikari Warriors.



Above: Buggy Boy.



Above: Beyond the Ice Palace.



# YOUR COMMODORE



*delivered to your  
door FREE!\**

That's right, if you take out a year's subscription to Your Commodore we will make sure that it is delivered to your door each month at no extra charge\*. Just fill in the coupon below and send it to the address given with a cheque, money order or credit card instructions to cover the cost of the subscription. We'll do the rest.

\* Overseas subscription rates include postage.

UK:	£15.00
EUROPE:	£25.25
MIDDLE EAST:	£25.50
FAR EAST:	£26.40
REST OF THE WORLD:	£28.00
or USA:	\$42.00

Annual Rates on Request.

Send this form with  
your remittance to:  
INFONET LTD,  
5 River Park Estate,  
Biller Lane,  
BERKHAMSTED,  
Herts. HP4 1HL,  
United Kingdom

Please commence my subscription to Your Commodore with the ..... issue.

I enclose my cheque/money order for £..... made payable to  
ARGUS SPECIALIST PUBLICATIONS

Or Debit my Access/Visa number

Valid from ..... to ..... Signature .....

Name ..... Address .....

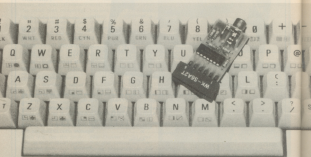
..... Postcode .....

New subscriber  Subscription renewal extension (where applicable)

# 1st CD

Can the ageing Commodore 64 keep up with the brash young upstarts of the 16-bit world. Maybe it can, with this CD interface from Rainbow Arts.

# EDITION



There has been a lot of speculation about what CD-ROM is going to do for the computer and entertainment industry. Gigabytes of code, film-like animation sequences stored on CD, with stirring musical scores to accompany the action.

Even now we are seeing the emergence of the new technology, witness Microsoft's releasing Defender of the Crown on CD for connecting up to PC's. There's the PC Engine, with its CD software, and who knows that is around the corner.

Well like you I can only guess, but I'd never have guessed what Rainbow Arts was going to do. In a seemingly bizarre marketing move, the company has released the 1st CD-Edition. This package contains an interface which plugs into the cassette port, a CD and an instruction manual.

The interface which translates the audio output of a CD player into the audio format of the cassette port is small and fragile looking. It isn't even boxed and gives the impression that a moment's carelessness would result in it being snapped in half.

The only catch with this package is the CD player. Unless the game's on the CD, for this is a compilation, were of such brilliance that it was worth laying out £150 or so for the CD player, or you already had one, then it isn't going to be of much use.

Setting everything up is a minor hassle, simply because of the need to have all the equipment in close proximity. It says in the manual that you can use a portable CD unit just as easily, and in this is far easier to set up I gave that a go.

Plug in the interface, connect a phone plug lead from the interface to the line out on the CD player, turn on your C64 and insert your disc and you're ready to roll. Easy enough, you then just type LOAD and on the CD player in action. After about 45 seconds you should be into the main menu, and the CD player can be stopped or paused now. Also the portable CD unit didn't like working with the interface so it was necessary to hand the big unit out. Take note, if you only have a portable, it might not work.

My main unit worked fine though, and the menu offered a choice of ten games for my selection. After making a selection, the menu informs you to jump to a specific track number where the game is stored, then gives you. After anything between 30 and 35 seconds later, the decompressed program is running happily and you can turn the CD player off.

This is all good and well, but let's look at what you're getting a bit closer. For one thing the loading time isn't particularly fast. In fact it's quite slow when you realise how little data is being loaded, but is comparable with today's fast loaders on the C64 disk drive.

How much room on the CD does all this take up? About 11 minutes worth, and that's padded out. To try and fill up the rest of this very empty disc, the programs are recorded twice, simply add 20 to the track number to access them, and there is a selection of 18 music tracks by Chris Blakebrook (what? so listen to through your amplifier). These music tracks are nothing special, and not worth buying the CD-Edition for.

The actual games, almost an oversight in this strange project are not your state of the art games. Some of them are older than my mother, but for the record, this is what you get: David's Midnight Magic (pinball), Landerboard, Mission Elevator, Impossible Mission, Dropzone, Lofrunner, Solomon's Key, Jaka, M.U.L.E., and Fix II.

Although Rainbow Arts has been quite brave in testing the water with this package, it has cut corners as far as paying for new games and the production standards of the interface are concerned.

If you don't have a CD Player then forget it. If you already do, and you can lug it close enough to your computer then all you have to worry about is whether you really want the benefit of having ten very old games and some forgettable music on a compact disc. This isn't the technology of tomorrow, this is Rainbow Arts trying to cash in on a current fashion.

**Dennis Evans**



COM  
NEW

**THINKING OF BUYING  
A NEW CAR?**

**DON'T!**

.....without consulting the

**"Handy  
Little  
Booklet"**

"Handy Little Booklet" is the essential reference book for everyone buying a new car.

It lists the main car manufacturers alphabetically, together with each car's current retail price, insurance group, engine size, urban mpg, unleaded compatibility, Service/Maintenance/Repair costs - based on 50,000 mileage - and tax bracket - for company car drivers.

So before you invest thousands of pounds in a new car invest just £2 in the "Handy Little Booklet" to help you make the right choice.

To get your copy send £2 plus 25 pence (for postage and packaging) to: Kim Cleary, Company Car, International Trade Publications Ltd., Queensway House, 2 Queensway, Redhill, Surrey RH1 1QS, or telephone for an (0737) 788011 for further details.  
Registered no. 228899

It's easy to  
complain about  
advertisements.  
But which ones?

Every week millions of advertisements appear in print, on posters or in the cinema.

Most of them comply with the rules contained in the British Code of Advertising Practice.

But some of them break the rules and warrant your complaints.

If you're not sure about which ones they are, however, drop us a line and we'll send you an abridged copy of the Advertising Code.

Then, if an advertisement bothers you, you'll be justified in bothering us.

**The Advertising Standards Authority.** ✓  
If an advertisement is wrong, we're here to put it right.

ASA Ltd, Dept 2 Brook House, Torrington Place, London WC1E 7HN

This space is donated in the interests of high standards of advertising.

## Editor's Note

Apologies must go to Mr. M. Carroll for an error published in the August issue of Your Commodore. On page 54, we accredited Mr. Carroll's program, Disk Scrambler to S.T. Burke. Apologies all round for this error.



# Software for Sale

*If you think that one of our programs looks very interesting, but you can't afford the time to type it in, then our software service will help you out*

It's three o'clock in the morning. You sit at the computer keyboard having just finished a marathon typing session entering one of the superb programs from *Your Commodore*. Your fingers reach for the keyboard and press the letters R, U and N. You press RETURN, sit back and nothing happens.

— Everyone has probably faced this problem. When it does happen it's a matter of spending hours searching through the program for any typing mistakes. No matter how long you look or how many people help you, you can usually guarantee that at least one little but slips through unnoticed.

The *Your Commodore* Software Service makes available all of the programs from each issue on both cassette and disk at a price of £6.00 for disk and £4.00 for cassette. None of the documentation for the programs is supplied with the software since it is all available in the relevant magazine. Should you not have the magazine then back issues are available from the following address:

INFUNET LTD, 3 River Park Estate, Berkhamsted, Herts,  
HP4 1HL  
Tel: (0947) 76661

Please contact this address for prices and availability.

## The Disk

Programs on the disk will also be supplied as totally working versions, i.e. when possible we will not use Basic Loaders thus making use of the programs much easier. Unfortunately at the moment we cannot duplicate C16 and Plus/4 cassettes. However programs for these machines will be available on the disk.

What programs are available?

At the top of each article you will find a strap containing the article type, C64 Program etc. So that you can see which programs are available on which format, you will also find a couple of symbols after this strap. The symbols have the following meaning:



This symbol means that the program is available on cassette.



These programs are available on disk.

## Please Note

Since the programs supplied on cassette are total working versions of the program, we do not put disk-only programs on tape. There is no sense in playing a program that expects to be reading from disk on to tape.

---

## MAY 1989

**ANTI-FREEZE** - Protect your C64 programs from cartridge-based freezes.

**MULTI-COLOURED LIST** - Brighten up your C64 Basic listings by adding on-screen colour.

**PRINTFX** - A suite of powerful screen printing commands to add to your Plus/4's Basic (disk only).

**BANKER 128** - Money Management for C128 disk users.

**TURBO TOUCH** - A superb typing trainer for C64 disk users.

## ORDER CODE

DISK YCMAY89 £6.00

TAPE YCMAY89 £4.00

---

## JUNE 1989

**RETURNER** - A handy routine that allows your C64 programs to re-load a disk based menu (disk only).

**LINE INPUT** - Improve your C64's INPUT routine.

**PROGRAM ANALYSER** - A suite of programs to help you examine your C64 Basic programs in depth.

**ASM ASSEMBLER** - A powerful 6510 assembler for the C64.

## ORDER CODE

DISK YCJUN89 £6.00

TAPE YCJUN89 £4.00

**JULY 1989**

**MOUSE II** - Use a 1250 mouse in 80 column mode on the C128.

**QUICK SEARCH** - Add a FIND option to C64 Basic.

**SPRITE LIBRARY** - Add a collection of circles to your growing sprite library (C64).

**HEAD FOR HOME** - An update on our popular C16 and Plus/4 game. Available on disk only.

**WINDOWS ON THE 64** - Powerful windowing commands for the C64.

**SPRITZ SPRITE** - Give your Plus/4 or expanded C16 sprites - just like a C64. Available on disk only.

**ORDER CODE**

**DISK YD7JUL89 06.00**

**TAPE YC7JUL89 04.00**

**AUGUST 1989**

**REASONING ON THE 128** - Programs for the first part of our expert system series (128 Disk only).

**THESAURUS** - Build up your own C64 thesaurus with this program for disk or tape.

**WINDOW ON A MAZE** - Generating mazes on your C64.

**ADDRESS BOOK** - A cassette based address book for C64 users.

**DISK SCRAMBLER** - Protect your disk data from prying eyes (C64 disk).

**ORDER CODE**

**DISK YD1AUG89 06.00**

**TAPE YCAUG89 04.00**

**SEPTEMBER 1989**

**BASES AND SQUARES** - Tutorial into mathematical formulas.

**REASONING ON THE 128** - Continuation of expert system.

**DOS 4.1** - Enhanced DOS commands for disk users.

**ORDER CODE YDSEP 89**

**DISK YDOCT 89 06.00**

Cassettes or disks are available from March 1986. Please ring the editorial office (0442-66331) for details of those.

**ORDER FORM - PLEASE COMPLETE IN BLOCK CAPITALS**

NAME	QTY	TAPE/DISK	ORDER CODE	PRICE
OCT 1989		TAPE (04.00)	YCOCT89	
OCT 1989		DISK (06.00)	YDOCT89	
OVERSEAS POST £1				
			TOTAL	

NAME.....

ADDRESS.....

POSTCODE.....

Enclose a cheque/postal order for £..... made payable to ARGUS SPECIALIST PUBLICATIONS LTD.

All orders should be sent to: YOUR COMMODORE.

READERS SERVICES, ARGUS HOUSE, BOUNDARY WAY, HEMEL HEMPSTEAD, HERTS. HP2 1ST

Please allow 28 days for delivery.





# COMMODORE REPAIR SERVICES

TO ADVERTISE YOUR COMMODORE REPAIR  
SERVICES CALL: JAYNE HEIGOLD ON  
0442 66551

RATE: £11.50 (- VAT) PER SINGLE COLUMN CM  
STANDARD SIZE 4cm x 1 col - £48.00 (-VAT)



TELEPHONE BOOKINGS WELCOME

## M.C.E. SERVICES

85, Albert Street, Mansfield, Notts  
NG19 1EA. Tel: 0523 632812

FIXED PRICE COMMODORE SERVICES	
CAS	£26.00
CAS	£26.00
PLUGS	£26.00
INSTALL A 500	£26.00
1501	£26.00
1501	£26.00
COPYING	£26.00

All prices incl. VAT, Labour, Parts etc.  
NO MORE TO PAY. Please ring for details.

## COMMODORE SPARES & REPAIRS

### REPAIRS

CM, C+4 ..... £25 Inc.  
CT88, 1501 ..... £20 Inc.

Free northampton, 1 week turnaround

### SPARES

1501 14	£2.50	91700*	£12.00
9010	£2.50	9001*	£4.00
9024	£11.50	1004 Power Pack	£24.00
9081	£17.25	1004 Console Unit	£22.00
9089	£21.50	2 1/2" Power Pack	£28.00

Inc VAT & P/P

### CASH COMPUTER SERVICES

Dept BC, 14 Ridgeway Road,  
Salisbury, Wiltshire, SP1 3BAJ.  
Tel: 02752 52641

## COMPUTER SYSTEMS

\* REPAIRS & SPARES  
\* SALES & SUPPLIES



**dB**  
ELECTRONIC SERVICES  
OUELMSFORD D6004

TO ADVERTISE IN  
YOUR COMMODORE  
CALL JAYNE  
HEIGOLD 0442 66551  
EXT. 368

TO PROMOTE  
YOUR SERVICE  
JOIN THE  
COMMODORE  
REPAIR SERVICE  
GUIDE  
0442 66551, Ex 368

# NEXT MONTH

## A NIGHTMARE ON ELM STREET

Freddy Krueger - the man with the designer-cooking stomach  
strapped to his fingers - is finally to make it to the home  
computer.

## NEON ZONE

The man with many columns (over!). John Cook, deals  
us a dose of arcade action, and explores many coin-op  
hazards.

## COMIC WATCH

A look at the wonderful world of men in tights, and their  
related computer games.

Plus Play By Mail Games (Board), More Wobbly Comps,  
Loadreviews, and Your Programme...



# THE END IS NIGH



Hi! It's Rik here again  
just to round off the  
issue with some more  
computer trade gossip.

## Landscape Gardening

**A**PPARENTLY, according to a press release sitting in front of me, there is to be a new landscape for the immensely popular Populous (so popular in fact, that the ST and Amiga versions rose to 3rd spot in the 8-bit chart in Computer Trade Weekly). Originally plans were to have it based on Samurai legend, but wild and wacky Electronic Arts has a far better idea in mind.

The new landscape is now titled 'The Big Plains', with computer print-out paper as the land, computers as the settlements (from the ZX81 to a Cray) and cigarette stubs and pencils as landscape features. To be honest, I think there's a little less tagging going on here.

## Earwig 'O'

**O**n a charitable note, the Grandstar charity football match (which the jermies lost abysmally last year) is to go ahead, and certain companies are taking it very seriously indeed.

The charity in question is the Hillsborough disaster appeal - a charity close to my own heart due to my support for Liverpool Football Club. Some companies are taking the game so seriously that they aim to field very strong sides. One company (who shall remain nameless) have even announced that Kenny Swain (ex-Manchester City player) will be in their squad.

Let's just hope that the reason for playing is not washed over by inter-company rivalry.

## Gang Bang

**P**SYCHOSIS has recently announced the fact that they have lost a large consignment of copies of Blood Money in a hijack of a British Lorry bound for Paris. Although the lorry contained valuable clocks and lighters, the French gang involved only stole the Amiga version of the recent game.

If you're stopped whilst strolling through the streets of Paris, and asked by a dirty French man in a brown coat smoking Gauloises, if you would like to purchase a piece of software, don't worry, he's not trying to sell you a dodgy set aid.

I'll see ya next month...  
Rik Henderson

# FREE! TENSTAR PACK WORTH OVER £229!

# Commodore AMIGA



**£346.95** with £399

INCLUDES FREE UK DELIVERY

The Amiga 500 is one of a new breed of technologically advanced computers, which are now emerging as the core platform for home computing, based around the new Motorola 68000 chip. The Amiga has 512K main and a 1Mbyte double sided disk drive built-in, it can be connected directly to a wide range of monitors, or to a domestic TV set through a TV modulation. Designed with the user in mind, the Amiga features a user friendly WIMP environment and options supplied with a few mouse. And, when you buy your Amiga from Silica Shop, the UK's first Amiga specialist, you will experience an after sales service that is second to none, including a technical support hotline and free newsletters and price lists. Before the details below for our complete information pack, and to see the status of the Silica Service and the very latest Silica Amiga offers.

## WHY SILICA SHOP?

Since you decide when buying your Commodore Amiga, you will also decide who you buy it from. There are many companies who sell Amiga computers and accessories, but only one selling them from a specialist Amiga store. This store is Silica Shop, the UK's first Amiga specialist. We have a full time staff of Amiga enthusiasts who are passionate about the Amiga. We have a full time staff of Amiga enthusiasts who are passionate about the Amiga. We have a full time staff of Amiga enthusiasts who are passionate about the Amiga.

**THE FULL STOCK RANGE:** The largest range of Amiga accessories, accessories, games and software in the UK.

**AFTER SALES SUPPORT:** The staff at Silica Shop are dedicated to help you to get the most from your Amiga.

**FREE DELIVERY:** Most Amiga's are now bought on credit, so you can buy them now, but pay for them later.

**FREE TECHNICAL SUPPORT:** Our full time staff of Amiga enthusiasts are dedicated to help you to get the most from your Amiga.

**FREE MATCH PROGRAM:** We will regularly update our customers with the latest Amiga offers and price lists.

**FREE TECHNICAL SUPPORT:** Our full time staff of Amiga enthusiasts are dedicated to help you to get the most from your Amiga.

## PHOTON PAINT PACK

- Amiga Computer **£399.99**
  - TV Modulator **£24.99**
  - Photon Paint **£59.95**
  - TenStar Pack **£229.50**
- TOTAL RRP: £724.43**  
**LESS DISCOUNT: £395.43**  
**PACK PRICE **£399****

## 1084S MONITOR PACK

- Amiga Computer **£399.99**
  - 1084S Colour Monitor **£299.99**
  - Photon Paint **£59.95**
  - TenStar Pack **£229.50**
- TOTAL RRP: £999.43**  
**LESS DISCOUNT: £380.43**  
**PACK PRICE **£649****

## FREE FROM SILICA

When you buy the Amiga 500 from Silica Shop you will not only get a huge discount, you will also get a free Amiga 500 software pack. This pack contains a wide range of software, including a TV modulator, with every Amiga bought from Silica Shop. This pack contains a wide range of software, including a TV modulator, with every Amiga bought from Silica Shop.

## FREE TENSTAR PACK

- Amiga 500 Computer **£399.99**
  - Amiga 500 TV Modulator **£24.99**
  - Amiga 500 Keyboard **£24.99**
  - Amiga 500 Mouse **£24.99**
  - Amiga 500 Software Pack **£229.50**
- TOTAL RRP: £724.43**  
**LESS DISCOUNT: £395.43**  
**PACK PRICE **£399****

## SILICA SHOP:

**REDFORD (see below)** 01-2088 2212  
 100-102, Market Street, Redford, Bristol, GL2 1JH  
 01-2088 2212

**LONDON** 01-5488 4888  
 100-102, Market Street, Redford, Bristol, GL2 1JH  
 01-2088 2212

**LONDON** 01-825 2234  
 100-102, Market Street, Redford, Bristol, GL2 1JH  
 01-2088 2212

## PLEASE SEND ME FREE LITERATURE ON THE AMIGA

My Name: \_\_\_\_\_ Initials: \_\_\_\_\_ Surname: \_\_\_\_\_

Address: \_\_\_\_\_

Do you already own a computer?  
 If so, which one?  
 \_\_\_\_\_

Postcode: \_\_\_\_\_

**GREAT NEWS**

# NOW MONTHLY!



COMMODORE  
*Disk User*  
FOR C64 AND C128 USERS

GOOD PRINT

SOFTWARE WORTH  
AT LEAST

5000

**£50**

UPCODE SCANNER

DEMOS

WIZARD

ADAMKID

**NOVEMBER ISSUE  
ON SALE**

**OCTOBER 20TH**

COMMODORE DISK USER is now on  
the shelves every 28 - 30 days  
at a special price of £5.00

COMMODORE DISK USER IS A LOT MORE THAN JUST ANOTHER COMPUTER MAGAZINE. EVERY ISSUE CARRIES A DISKETTE CONTAINING MORE THAN 250 WORTH OF SOFTWARE RANGING FROM SERIOUS PROGRAMMING UTILITIES TO ARCADE GAMES. THERE ARE PLENTY OF COMMODORE MAGAZINES ON THE MARKET, BUT WE BELIEVE THAT THIS IS THE FIRST TO CATER FOR DISK USERS OF ALL AGES AND TASTES.

*Get in on the action*