

DISPATCH DISK



CONTENTS :-

1. EDITORIAL
2. LIBRARY NOTES
- 3-5. GATEWAY
6. COMMITTEE POSITIONS
7. GEOS GEMS
8. DISPATCH DISK NOTES

EDITORIAL

Hello everyone,

This months meeting will a general workshop, where one can have their difficulties and problems they are having with their programs, hardware and peripherals. Next month's demonstration or workshop will be announced at tonights meeting with any luck.

Next month's meeting will be our club's Annual General Meeting, with this in mind there is a page with all the committee positions listed and a short description of each position, so you can decide which position you or someone you wish to nominate for one of the positions. So we will see you there next month.

Also the membership fees are due at the A.G.M. meeting, YES! its that time again, so please pay as soon as practical, if you are having any difficulties see the club President to arrange a agreeable solution. Unfortunately the FEES have been increased slightly to keep up with increasing prices and costs. The Yearly Fee of \$10.00 goes up to \$12.00 and Postal membership of \$15.00 goes up to \$18.00. So the Fees for the following year are as following :-

JOINING FEE \$5.00
MEMBERSHIP \$12.00
POSTAL MEMBERS ... \$18.00



In this issue of the DISPATCH DISK there is an excellent article by R.Gasson on CMD's Gateway a article well worth looking at. Unfortunately there is no Puzzle or Pokes & Peeks. Last month's Puzzle's answer will published next month.

JAN VAN DE BELT - EDITOR

Disk Library Notes by Jeff Carey

Just a short note this month. Unfortunately I will not be present at the meeting this month. My ever reliable deputy, Ross Edwards, will have the Loadstar Disks and the Disk Library Catalog with him. If I am unable to persuade him to bring the copying gear too, you will have to place orders with him and (if urgently required) I will post them onto you in the next week.

I hope to have the PD programs for transferring files between Commodore Disks and IBM disks available at the October meeting and I promise to do a relatively short and hopefully interesting demo.

I will be available to continue as 64 Disk Librarian next year if required and since I have now have a C-128, I will be actively campaigning to take over the post of C-128 Librarian as well. My campaign policy will be to actually have C-128 PD Library Disks available and I already have plans to have at least 20 disks in the Library. It will be interesting to see what my opponent/s put up as their policy.

Just a comment which I feel has to be made. As a member of the Club, I always try to help out other members with their problems. However, I would like people to remember that I am not an expert in everything and if I say I can't help, I really mean it. While I have some gear that others in the Club don't have (midi interfaces, GEORAM), I am always prepared to inform other members about that gear but there are certain things that I don't have e.g. a full range of available printers especially the new MPS 1200 etc. series (my printers are Epson based), hence if you have a problem with a printer other than an Epson, I can't help you and all I can suggest is that you read the manual for your printer (I eventually read mine and found it really useful and as a result I can solve most of my problems). I suggest that you read your manuals (for your hardware) and follow the on screen prompts for programs - you will be surprised how many times the answer to your problem is right there on the screen before you. And don't forget, the Club has a number of books and magazines and they contain a wealth of information. I never look Commodore computing lessons; most of my expertise I picked up by reading magazines, trial and many errors, and discussing the problems with workmates or Club members at meetings.

In what has turned out to be a bit of a gripe session, can I finish with a couple more. All the programmes in our PD Library work - I don't include them unless they do. If they don't work, then unless we pick up an error in the copying process (in which case I will correct it at the next meeting) then the problem is with the user - and that problem is not mine. Unless you have got yourself into a disaster situation i.e. you have typed for 4 pages and can't find the save to disk option, can you keep your queries to Club nights - on other nights I would prefer to work on my own computer rather than conduct lessons by phone, and believe me until they give us video phones, it is really difficult to solve problems over the phone - it's quite often like 2 people speaking in different languages.

And a final gripe, in last month's notes I asked for some assistance with a problem which I had. I got no assistance. When I eventually solve the problem myself, as I eventually will, you will excuse me if I don't share my new found knowledge with you.

**OR Is the real answer that no-one reads the newsletter
anyway!!!!**

GATEWAY REVIEW

BY ROD GASTON 1991

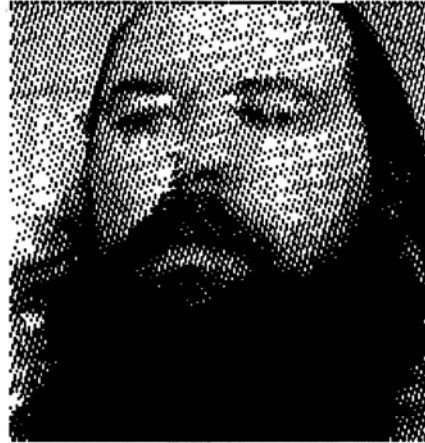
Software review - "GATEWAY" from
CMD
Computer : C64/128

As the manual points out GATEWAY was developed with the serious GEOS user in mind. Although it can be used with just a basic setup (C64 and 1 floppy) it does place some rather serious restrictions on its use, mainly in the area of copying files from one disk to another. Gateway doesn't support this function at all, unless two (or more) drives are used.

There are also restrictions for those without RAM expansion. Firstly THREE drive support will not be available. The directory buffer size is reduced from 144 entries to 128 entries (I can't see this as being a real great disadvantage unless a HD or Ramdrive is being used). Finally the "Switcher" will not be able to be used. More on the switcher later.

GATEWAY in a very crude way could be considered as a replacement for the desktop, but in reality it is a lot more than that, the adverts for GATEWAY call it a "unique, streamlined approach to file management under GEOS", I couldn't agree more, and in fact this is an understatement. GATEWAY gives those of us with REU's, HD's etc way and means of making FULL use of these devices. No longer do we have to be content with only being able to use only 320k of our 512k REU's, with GATEWAY we can use the full 512k or even up to 2megs on expanded REU's, this is more RAM than some IBM's can use, this is POWER. Owners of the CMD Hard drives, Ramdrives, Ramlink can now make full use of these large capacity storage devices as GATEWAY offers a means of accessing any partition or subdirectory easily, giving up to 16meg capacity in any "folder".

GATEWAY needs to be installed onto a boot disk before it can be used. To do this is a very simple procedure but does require a bit of careful study



(and fore-thought) before this is attempted. This isn't because GATEWAY is a hard program to use (in fact quite the opposite), but because GATEWAY has been designed to be as versatile as possible and of course not everyone has the same hardware available to them. The first thing you notice when installing GATEWAY is the disk drivers, Unlike desktop where the drivers are already written into the program, and as such will only support 2 drives, and these must be either a 1541,1571 or 1581, GATEWAY uses "external" drivers and there are no less than TEN of them.

The manual describes each of these drivers, and attempts to explain the most suitable set up for any particular system, however it does help to re-read the relevant parts of the manual before things finally fall into place (especially if you have a ramlink AND an REU).

Once you have decided which drivers you require you must copy these files onto a new boot disk, along with several other files, your printer and input drivers. Following this you double click on the "make boot" program then wait a few seconds while a new boot disk is created. This boot disk can be created on any drive or partition. This only needs to be done once (unless you alter your hardware setup), but thereafter the benefits become very apparent.

GEOS (or should that be GATEWAY) can now be booted from ANY drive, even a RAMDRIVE.

CMD suggest that if you intend to use the C64 and C128 versions of GATEWAY then a different boot disk (or partition) should be used for each. (makes sense really).

After GATEWAY has been booted several things become apparent, the most notable being that the familiar desktop icons no longer exist, instead all files are listed in a format similar to the "view by date, name, type" option used by desktop. At first I thought this was a step backward, but it didn't bother me because I am used to viewing files in this manner as it makes multiple selections of files easier.

The next thing I noticed was that the desk accessories were no longer available from the "GEOS" menu option. These were replaced with GATEWAY's "doc" files (these are NOT documents as you would expect, but rather are a type of file similar to desk accessories but related to GATEWAY's functions)

The desk accessories are still available from applications in the normal manner but from the GATEWAY these accessories must be opened the same way as any other file. Once again I thought this was a step backward especially if you have a lot of files on disk and your favourite accessory happens to be way down the list. However Gateway has the answer.

Next to the GEOS menu is an "Action" menu, this is where you do things such as format, validate, rename disks etc. Most options here are dual purpose in that the operation can be used on a disk or a file, eg if you select a file then select "rename" you can rename the file, however if you select rename without selecting a file then the DISK is renamed. you can also get info on any file or the disk from this menu.

The next item is "VIEW", from here you can select whether to view all files or just a particular TYPE of file.

This is a very useful facility and can be used to fill the gap of losing the normal desk accessories, you simply select it to view the "DA's" and all desk accessory are displayed ready for your selection. You can of course use this same menu to display only applications, fonts, datafiles etc. VERY convenient.

Next on the menu is the SELECT, here you can select all files on the disk or just a page of files, nothing really new here.

The final menu is called "Special" from here you can perform a "reset" whereby GATEWAY will reinitialise itself according to the parameters in the current gateway disk. Handy for the odd times when you find one of your drives has "disappeared" for whatever reason.

From this menu you can also "browse" for files, enter a filename (or part of) and GATEWAY will look for the first match, very useful if you have lots of files on a disk. There are also options to un-trash files (within limitations), shut down (return to BASIC), and to change partitions (Ramlink, Ramdrive, and CMD hard drives only)

A final option in this menu is the ability to alter the DISK's icon. This is a unique feature that is very much welcomed. I would imagine that any serious GEOS user would have a collection of disks sorted into photo's, geopaint files, geowrite files etc.. you can now create and capture any file icon in assign it to a disk (or partition), it makes identifying disks a breeze (and a pleasant variety)

With an REU present three drives can be accessed directly without the need to swap drive "c" over with one of the other drives. There is also an auto-swap function that will switch over drives "a" and "c" or

"b" and "c" for those programs that will not recognise drive "c".

As mentioned earlier GATEWAY also offers "doc" files, these are similar to desk accessories but perform functions such as creating sub directories, reading the HD's inbuilt clock and updating the GEOS time clock, updating the time stamp on any file or disk. There are also functions to view photo scraps, give more info on files, and the SWITCHER.

These "doc" files are incorporated into GATEWAY itself, but can be added/removed when necessary. I imagine that more of these doc files will be forthcoming.

A word of warning here, the DOC files are not like desk accessories in that they are incorporated within GATEWAY itself, and as such must be "installed" however when you install one of these files the GATEWAY program becomes larger and the "doc" file is "used up". When you remove a "doc" file from gateway the original file is NOT recovered therefore it is essential that you only incorporate a copy of the doc file NOT the original as once its used there is no way to recover it. The manual does state this fact, but I feel it should be emphasised a bit more as it would be very easy to loose the file

completely especially if you install it from the original GATEWAY disk. (Fortunately I got into the habit of only working with with backup disks otherwise I would've fallen into this trap).

When GATEWAY is being used there is no longer any need for the GEOS "config" file nor is there a need for preference managers or associated files, these functions are now all performed within GATEWAY itself, along with the benefit of re-programmable function keys. Once again a very useful facility.

Finally one of my "favourite" features of GATEWAY is its SWITCHER facility, however to use this function a minimum of 512k RAM expansion is required. SWITCHER is GATEWAY's answer to multi-tasking (yes thats right, multi tasking) . Although this isn't true multitasking where two (or more) programs can be RUNNING at the same time, it does however allow you to USE two programs at the same time.

In essence to use this function you must activate the SWITCHER from GATEWAY, load your application program, press the "switch" key (which will "stash" your current application into REU and place you back at GATEWAY). You may then run another application and at anytime you press the "switch" key you will be returned back to the first application exactly where you left it and the "second" application is then stored in REU. you can the do more work on the first application, switch back to the second and so on.

As an example suppose you wanted to include photo scraps from a GEOpaint file into a GEOWrite file. Under Desktop the easiest (only?) way to do this would be via the photo manager where you get you geowrite file underway, load the photomanager, cut/copy to a photo scrap then paste into GEOWrite. This is all very well, but of course you cannot edit the photo scraps, and you must reload the photo-manager everytime you need a new scrap. with the switcher you can load/run GEOpaint, SWITCH it, load/run GEOWrite, and when you want a photo scrap you SWITCH back to GEOpaint cut your scrap, switch back to GEOWrite,

paste the scrap, back to GEOpaint, edit/alter or cut another scrap and so on.

Of course I'm only using Geowrite/paint as an example, the SWITCHER will work just as well with almost any application. I have already found it invaluable for creating photo albums from digitised pictures converted from handy scan format. In this case I switch between GEOpaint and the photo manager. The advantage here is SPEED. I cut a picture from GEOpaint, Switch to photomanager (which is displayed almost instantly EXACTLY as I left it, so I simply PASTE the new scrap, then back to geopaint to cut the next scrap.. it is so much easier than opening/closing the photo manager everytime.

There are some limitations when using switcher, such as not being able to reliably work on the same file at the one time with two different applications, the results are unpredictable. Nor can you SWITCH Geowrite and attempt to change fonts (or remove them). Nor is it wise to remove files that are being used by a SWITCHED application. As the manual says " GEOS applications don't like to discover that their documents have disappeared".

I can't say that all switched applications work flawlessly. I have had "lockups" on several occasions for various reasons, however updating a data file before you attempt to switch will usually prevent any loss of data should something go wrong, and as long as you act logically then it usually works well. Don't forget that GEOS (or the C64) was never intended to perform such feats.



Well I think that about covers most of GATEWAY's facilities, no doubt I have left one or two things out. As a summary I would say that for the serious GEOS user this program is a MUST. If you only have one disk drive then although usable would be very restrictive. If you have two disk drives then it is a worthwhile program to have as it really does give a more "streamlined" approach to file management. If you have a RAM expander (such as GEORam or 17xx) then it is a MUST. If you have a CMD harddrive, Ramlink, or PPI RAMdrive then this program is a MUST.

Once again well done CMD (in this case I think most thanks should go to Paul Bosacki , as he did most (all?) of the programming). Another rather excellent product from a company that really is dedicated to to C64/128 users, I wish them the best with all of their products, They have virtually turned an "8 bit games machine" into a very powerful and productive work horse.

Rod Gasson.

footnotes.

Until recently I used to HATE GEOS (and made no secret of the fact). However with the advent of CMD's Hard drive, and now GATEWAY I am not only pleased with GEOS, but am seriously considering making my system autoboot into the GEOS (or rather GATEWAY) environment. Not only is it now a pleasure to use but is the only program/system that really takes full advantage of all of my hardware.



This review was written using GEOPUBLISH.

The Graphic on the first page of this review (of me) was created using the "Computer Eyes" digitiser. The caricature on page two was digitised using the C64 HandyScanner. SDCUC members should recognise who it is. (at this point in time the caricature is being used WITHOUT Jeff's consent)

Digitised pictures such as these can be created from almost any photograph or picture for a nominal fee. Contact me for details. Laser printing is also available. Most Commodore formats supported.



nce again it is getting close to that time of the year again, that is the A.G.M. (Annual General Meeting). In October every committee member will step down and relections will be held for those positions, including mine. What I am asking is for you to support the club and elect the people you believe will best represent the club for you and possibly yourself as an executive committee member? Think about it!

For those who do not know the committee member positions and their roles, they are as follows :

PRESIDENT - Chairman (or Chairperson) at the Committee and General meetings and a good all round position to hold.

VICE PRESIDENT - To help out when the president can not make it or is ill. Also a good position to hold with not much to do.

SECRETARY - To post off letters to other members and businesses. Jot down notes at meetings and keep them in folders for other members to refer too. A bit heavier but still a good position.

TREASURER - To bank the clubs money into the clubs account and to counter sign any cheques that may be written out for club purposes, also keep track in general of where the money goes etc. Nice to handle money that is not your own.

64 DISK LIBRARIAN - To purchase disks for the clubs Public Domain library, Catalogue them and notify the club of the new additions. A bit tricky but can be handled quite easily in my opinion.

128 DISK LIBRARIAN - Keep track of 5 disks currently in the 128 library. What can I say.

BOOK LIBRARIAN - Notify the club of new additions to the library and catalogue them. An easy task to handle.

EDITOR - Put the final stages of the newsletter together that other members have contributed with keeping the club up to date of any functions or notices that may be required. A task that could require a few hours per month as well as bettering your computing skills in word processors etc. One way of getting first hand information on everything before others.

COMMITTEE MEMBER/S - A general participant in the clubs running and able to have a good saying in important decisions. More good fun.

As usual with the A.G.M. comes the subscriptions which are due, these are, with much deliberation, increasing. The Joining Fee will stay at \$5.00. The yearly Subscription Fee will increase from \$10.00 to \$12.00, and for Postal members it will increase from \$15.00 to \$18.00 per year. These decisions have been thought out thoroughly and have been kept down to a minimum, even though other clubs or user groups fees are considerably more. The Door fee will stay at \$2.00 per Family or member that comes to the meetings, which will still cover you for the Dispatch Disk newsletter and refreshments (Tea - Coffee & Biscuits). This fee is still payable as soon as you enter at the door and sign in, and the club appreciates your honesty in doing so.

If you are currently a postal member you can still have a say in the elections, by posting in your vote by the A.G.M. (the 16th of October) to either the Secretary or me, and it will be read out on the election night. You are also not limited to placing your nomination, you can write in any time you wish and the committee will discuss your letter or read it to the other club members if you have a particular problem with a program or hardware and get back to you as soon as possible. Also if you wish to contribute to the newsletter for any reason, it will be submitted as soon as it is received.

Hope to hear or see you there for your support.

Robert M. Cloosterman.....

GEOS GEMS

- Invaluable Utilities for GEOS

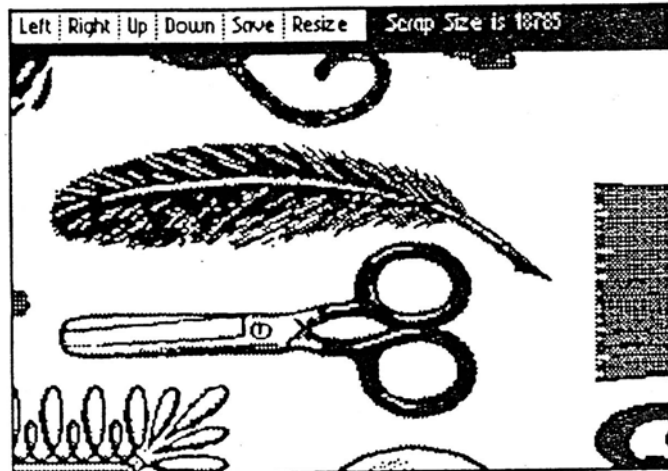
From Your Friendly Disk Librarian

Jeff Carey

Photo Utilities

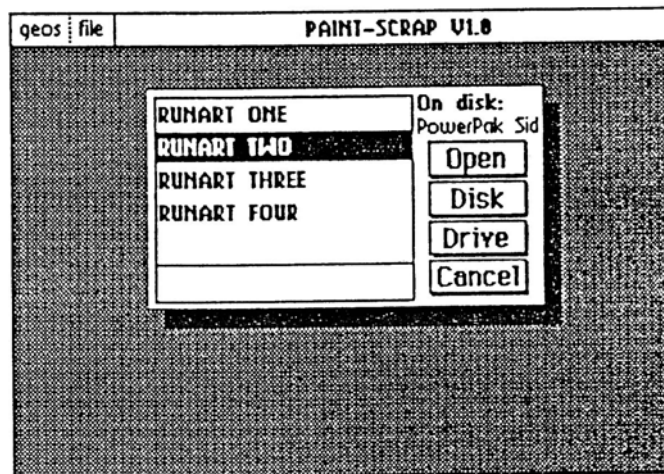
BigClipper

Big Clipper by Nick Vrtis will allow you to make almost any size Photo Scrap. The first version made Photo Scraps up to 8K in size. Version three will allow 20K Photo Scraps; that is almost a full page Photo Scrap. With line-drawing geoPaint documents you can create very large photo scraps. With very detailed and shaded geoPaint documents you will have to create smaller Photo Scraps. This program is very simple to use. You set the co-ordinates in pixels of the top and bottom scanlines and the left and right sides. After creating the Photo Scrap you can view it by scrolling it. Large Photo Scraps are mostly used for geoPublish because you can paste and manipulate large Photo Scraps on the Preview page. Reduced Photo Scraps printed on a laser printer look very fine. Wide Photo Scraps with normal height can be used in geoWrite for full page width letterheads.



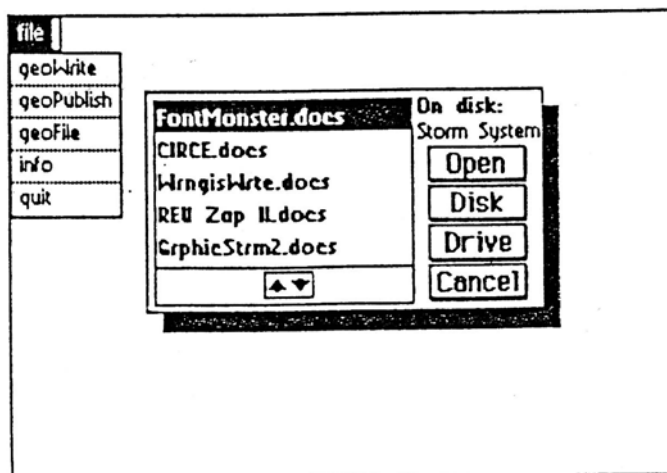
Paint-Scrap

Paint-Scrap by Dennis Seitz is a utility that will allow you to convert an entire geoPaint file to a Photo Scrap, so that it can be pasted into a geoPublish document. The maximum size allowed for the geoPaint file is about 28K. If the file is too large or complex the conversion will be stopped. By using the Paint Drivers you can convert a geoPublish document to geoPaint; and by using Paint-Scrap you can convert the geoPaint document to a Photo Scrap and paste the full scrap into a geoPublish document. This way you can use the full page editing features of geoPublish such as line, box, ellipse, and spline, and then use the geoPaint features such as pixel edit and pattern fills to put the finishing touches on your picture. You can convert the picture back and forth between the two formats as many times as you wish.



Retriever

Retriever by Ed Flinn is a very handy utility for copying Photo Scraps from documents and putting them all back into a Photo Album so they can be edited and pasted into other documents. This is great for documents where you lost the original Photo Scraps that were in the Photo Album or you receive a document from someone and want to use the Photo Scraps that were in it. Version two will retrieve Photo Scraps from geoWrite, geoFile, and geoPublish documents.



**Big Clipper is on PD Disk No.45.
Paint-Scrap and Retriever are on
PD Disk No. 46
All PD Disks Now \$3 each**



DISPATCH DISK NOTES



COMMITTEE 1990-91

PRESIDENT -	R. Cloosterman	382-0781
SECRETARY-	C. Van de Belt	382-8660
TREASURER-	A. Morrison	085 56-5013
NEWSLETTER ED-	J. Van de Belt	382-8660
64 LIBRARIAN-	J. Carey	294-8447
128 LIBRARIAN-	M. Tippins	381-3181

Our Disk and Magazine libraries are open at each general meeting from 7:30pm.

If you have any contributions for the newsletter, see Rob, Jeff or Jan.

NEXT MEETING

Our next general meeting will be held on the 16th OCTOBER AT 7:30 PM

SUBJECT- TO BE ANNOUNCED

LOCATION- Meetings are held in the house behind the Salvation Army Hall at 186 Elizabeth Rd. in Morphett Vale, just in from Beach Rd.

DOOR FEE- There is a door fee of \$2 per family, which includes the Newsletter plus coffee / tea and biscuits.

MEETING RULES

- 1) **NO SMOKING**
- 2) **NO DRINKING**
- 3) **NO SWEARING**

Through the generosity of the Salvation Army, we are allowed to use the facilities in this house, in return for which we give them a relatively small donation. We ask for your co-operation in respect to the above.

While we can not control what people do away from our club meetings, Piracy of copyright material can not be condoned at our meetings.

DISCLAIMER

The views expressed in this newsletter are those of the writers, and are not necessarily those of the club's committee or members.

The use of the word "COMMODORE" in no way implies any connection with any organization bearing that name.

No part of "THE DISPATCH DISK" may be copied or reproduced in any way without the written permission of the committee and the author.

WANTED

ASSISTANCE REQUIRED- THE CLUB STILL NEEDS THE ASSISTANCE OF SEVERAL MEMBERS IN THE FOLLOWING AREAS:-

- 1) Newsletter contributions
- 2) Expert Register. Please help us to help others with their problems.

DEMONSTRATION TOPICS - If you have any requests for topics you would like to see demonstrated, speak up. Even, if it has already been done, and you missed it let us now. If there is reasonable interest, it can probably be repeated.

FUTURE MEETINGS - Help us to spread the word of our existence. The club has available various notices which could be placed where people will see them. Your local supermarket usually has a notice board as do some newsagencies and Delicatessens. See the club President or a Committee member to obtain some of these notices and spread the word of our User Group.

FOR SALE

PUBLIC DOMAIN SOFTWARE - We have a large range of PUBLIC DOMAIN Software for sale through library. Prices represents very good value. Catalogue disks are also available for only \$100. See Jeff or Michael (for 128), at tonight's meeting for any enquires.

CHEAP DISKS - How much do you pay for your blank disk? The club is making bulk purchases of disks to help members save some money. The price of these disks is 60c per disk, which works out to be \$6.00 for a packet of 10.

If you are interested in some, see Rob at tonight's meeting.

MEMBERSHIP FEES

The scale of membership fees for this year will be as follows :-

Joining fee for new members	\$5.00
Membership fee (to A.G.M.)	\$10.00
Postal Members	\$15.00

All previous members who have not renewed their membership are unfinancial and will have to rejoin the club and pay the joining fee again in order to add items to the club's disk and magazine libraries, we need money, so please pay up promptly.

PRODUCED BY 64/128 USERS