

DISPATCH DISK NOVEMBER 1990

NEWSLETTER VOL.4 / NO.11



EDITORIAL

Hello everybody,

In this months newsletter, we have numerous interesting articles, but first some club news. Last months A.G.M. and a few previous general meetings were rather poorly attended. This is very disappointing, as there were some excellent demonstrations and workshops, it makes one wonder, what some members require from the club.

CLUB MEMBERSHIP FEES Are now due, and it would be appreciated if those members who have not payed their fees, could do so as soon as possible. See R. Cloosterman to pay your fees or if you are having difficulties, so that alternative arrangements can be made.

A new committee has been voted in, or should I say a re-adjusted one, see R. Cloosterman's November update for further details. Next months meeting is a games night, in the line of multi-player question/answer games, EG : Trivial Pursuit, Wheel of Fortune and Family Feud or other games in the same vein.

Articles in this edition are Library News, Sid Christmas Pics by Jeff Carey & Ross Edwards. A 64/128 Cartridge review, for Geos users:- Geos Keyboard commands, plus the November update (club news).

JAN VAN DE BELT EDITOR

POKES AND PEEKS

This month's pokes and peeks are general keyboard and program aid or tips, depending on what you want to call them. There are pokes for various key disables and enables, as well as bit map modes, also a few more. Hopefully you will find the following quite useful.

To disable the keyboard from within a program:- POKE 649,0

To enable the keyboard from within a program:- POKE 649,10

To have all keys repeat:-
POKE 650,128

To disable the space bar, cursor, insert-delete key repeat:-
POKE 650,64

To return all keys to normal operation:-
POKE 650,0

To enable Multicolour character mode:
POKE 53270,PEEK(53270)OR 16

To disable Multicolour character mode
POKE53270,PEEK(53270) AND 239

To enable Bit Map mode:-
POKE 53265,PEEK(53265)OR 32

To disable Bit Map mode:-
POKE53265,PEEK(53265)AND 223

To list without line numbers:-
POKE 22,35

HINTS AND TIPS (FOR GAMES FANATICS)

These following POKES are for unlimited lives, simply reset your computer or cartridge and type in the POKES plus SYS numbers as shown below.

ACTION BIKER POKE 2398,173 : SYS 2128
BOMB JACK POKE 5112,0 : SYS 3101 RICK
SPACE HARRIER POKE 6010,173 : SYS 2128

POKE WISELY

CONTENTS

SUBJECT	PAGE
EDITORIAL/POKES-PEEKs	1
LIBRARY NEWS	2
SID XMAS PICS	3
NOVEMBER UPDATE	4
64/128 CARTRIDGE	5
GEOS KEYBOARD COMMANDS	6
COMPUTER PUZZLE	7
DISPATCH DISK NOTES	8

LIBRARY NEWS

Hi! I am back attending meetings again - or at least I hope so - because if I am not at the November meeting, there will be no Multiplan Demo.

I have tried to get a public domain spreadsheet program available in time for this month's meeting - but at the time of writing, I have not been able to locate a suitable program. But I will keep trying.

Elsewhere, you will see an advert for the SID-PIC CHRISTMAS Disk which Ross Edwards has prepared for you all to enjoy. Thanks, Ross.

For my part, I have added four (4) Print Shop Public Domain disks to the Disk Library. Two of the disks have 3 block graphics with a mainly religious theme. However, there are other graphics on the disks e.g. Xmas Door, Xmas Girl, World Globe, etc. Each disk contains 94 graphics. The other two new disks are Disk No. 41 - containing 17 new Borders and 18 new Fonts for use with Print Shop (Non-Commodore version) Disk No. 40 - a double-sided disk containing 9 Fonts, 7 Borders, 4 graphics (including a Kangaroo), 9 Screen Magic Screens which show a variety of borders and backgrounds as well as conversion programs for converting picture files between Doodle, Print Shop, Koala and Geos. Additionally there is a program to load a Doodle screen outside of the actual Doodle program. To top it all off, there is a small slideshow showing how to use graphics. Each disk will be available from me at the meeting tonight (or any other Club night). Cost is \$3 per disk. Proceeds go to purchase new disks for the public domain collection.

Just in case you have dropped off to sleep during the Multiplan demo at the meeting tonight, I hope to finish off with a couple of quite remarkable sound demos which I have come across in my travels viz. 'Mel and Kim' and 'RAW' files.

I now have access to quite a lot of new Public Domain software, so perhaps you might let me know what type of programs you are currently looking for.

Until the December newsletter,

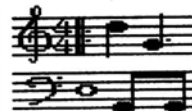
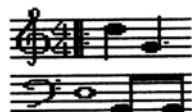
JEFF CAREY - Librarian.



**MAKE YOUR COMMODORE 64
THE CENTRE OF YOUR
CHRISTMAS CELEBRATION
with our Christmas Public Domain Disk**



CHRISTMAS SIDPIC



**A Great Collection of
CHRISTMAS SONGS & PICTURES
A Double Sided Disk of Carols & Christmas Songs
with words which scroll down the screen**

Included on this disk are :

Child Jesus
Sing We Noel
Deck The Halls
Up On The Housetops
White Christmas
Hark The herald Angels Sing
What Child is This
Jingle Bell Rock
O Christmas Tree
We Three Kings
Let It Snow
It Came Upon A Midnight Clear



Joy To The World
Away In A Manger
The First Noel
Adeste Fideles
God Rest Ye Merry Gentlemen
Holly Jolly Christmas
Angels We Have Heard On High
Grandma Got Run Over By A Reindeer
O Little Town Of Bethlehem
Silent Night
Its Christmas All Over The World
Auld Lang Syne



Created by Ross Edwards for your Christmas Pleasure

Available from the Disk Librarian for \$3

NOVEMBER UPDATE

Hello, once again,

I have been elected President for another year, and the club retains it's committee members with a few alterations. For those people who were not present at the A.G.M. , last month, the committee positions were filled as follows.

President : Robert Cloosterman
Secretary : Chris Van De Belt
Treasurer : Tony Heard
Librarian : Jeff Carey
128 Librarian : Michael Tippins
Editor : John Van de Belt
Committee
Member 1 : Alex Morrison

At this stage I would like to welcome Chris to the committee staff. I feel Chris will do a good job as the new secretary, because she has already had some experience on the committee as a silent Assistant Editor when John became the Editor of the Dispatch Disk Newsletter.

Mike has stepped down as Secretary because he feels that he can do a better job as the 128 Librarian and now he can devote his full time to it. Alex has become a Committee Member only and I believe he can contribute a lot in this coming year.

The club is still looking for a member to be referred to as Expert Register. That is a person who keeps a record of people and their knowledgable feild, so if a member has a particular problem, (To do with computers - not family) He or She can be referred to someone that knows a lot more about it than others, therefore with any luck, solving the problem.

At this point I would like to remind those who have not filled out and returned the Questionair, to PLEASE do so. If you have misplaced or lost it please don't hessitate to get another one from me, as these questionairs are important to the clubs future events and demonstrations.

This time last year I was Elected President for the first time, not knowing what to expect, I was hesitant to holding down this position and doing the club good. My own knowledge has increased three fold and as I know I have helped others in the same process of learning. As the club progresses there are new and updated Hardware/Software coming out all the time, which is also difficult to keep track of. So if you hear or receive something that can benefit the club or others, please let us know or better still do an article about it to put in the newsletter.

A lot of people may not realise this but these newsletters are being distributed Australia wide to other clubs for people to read (spelling mistakes and all) so with any luck we will be getting the same back from other clubs soon.

Due to illness, Tony will temporarily not be Treasurer and you will be notified of the situation as soon as it comes to hand.

Yours trully,

Robert Cloosterman..... President

C64/128 CARTRIDGE

TURBOLOAD

ARTICLE BY

JAN VAN DE BELT

There are numerous cartridges available on the market today for the C64/128, to name a few such as :- ACTION REPLAY, EXPERT and now SUPER EXPLORE V5. All these cartridges have a fast load capability as well as back up features and print dumps, plus numerous facilities and each cartridge has its own specialist utilities. These cartridges fall into the upper price bracket of \$100 - \$170 range.

In the lower price bracket there are various cartridges such as:- WARPSPEED, QUICKDISK II, TURBOLOAD and EPYX FAST LOAD, to name a few. Priced around approximately \$40 - \$70. These cartridges all have fast load capabilities, print dumps, plus each cartridge has its own specialist utilities. All these cartridges simply plug into the cartridge port and away you go. (IMPORTANT! Always turn off your computer when installing and removing your cartridges or you risk damaging your computer).

TURBOLOAD

TURBOLOAD is a cartridge that falls into the second category of the above mentioned cartridges. It's a middle of the range cartridge which has the following features :-

FASTLOADER

- *Loads disks up to six times normal speed (Both 1541 & 1571 drives)
- *Compatible to most software
- *Simplified DOS COMMANDS (For loading files, formatting disks, deleting files, etc.)
- *Stoppable directory listing which does not overwrite programs in memory
- *Easy listing of BASIC programs to printer
- *Text screen dump to printer

MENU MAKER

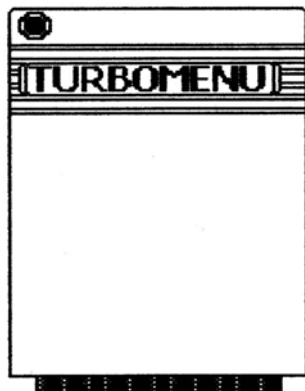
- *This unique built feature is ideal for beginners or professionals. It makes it easy to load and run programs (No need to type in names)

AUTO RUN

- *Simply press the COMMODORE and RUN STOP keys together

RESET

- *Avoid switching computer on/off.
- *Add pokes from magazines, etc.



I have been using this cartridge for the past few months and find it to be a very capable cartridge. The fast load section works quite well, and loads most of my disks approximately five times faster. I've had no problems with compatibility, only the occasional program that won't load with the cartridge, which simply solved by turning off the cartridge and going to the basic screen, then load normally. The simplified DOS COMMANDS feature the following functions:-

- TURBOLOAD off/on / •\$ Display Disk Directory / •B List Basic program (in memory) to printer / •E Read Error Channel (Display error type and stops disk light flashes)
 - D Delete file / •F "DISKNAME_ID" Complete format / •F "DISKNAME" short format
 - L "FILENAME" loads program (same as load "filename",8,1) / •L Loads First file on disk.
 - M Displays Turbomenu screen also makes up a turbo menu / •P dumps screen text to printer / •V Validates disk / •C send a command to disk drive / •H Help Screen.
- COMMODORE/RUN STOP Auto Run.

These DOS COMMANDS are quite easy to use and I've had no problems with them, some are quite handy to use EG:- •H the help screen then •P The print dump and you have a printed set of instructions. Turbomenu allows you to set up a disk menu, which operates in the following manner. Press COMMODORE/RUN STOP a menu appears, use cursor down to select program, then press return to load and run program. All in all this is quite a good cartridge and for approximately \$40 it's a reasonable buy.

GEOS V2 KEYBOARD COMMANDS

Recently I decided that moving the cursor up to the top of screen all the time was boring and time consuming just to open a window to make text bold, copy text, paste a picture, paste text, etc. With this in mind I took time out to note down all the keyboard commands to speed up my work.

Listed below are all the keyboard commands from DESKTOP and other applications :-

DESKTOP

⌘ A = CLOSE & OPEN DRIVE A
⌘ B = CLOSE & OPEN DRIVE B
⌘ Z = OPEN FILE
⌘ H = DUPLICATE FILE
⌘ M = RENAME FILE
⌘ Q = INFO ON FILE
⌘ P = PRINT FILE
⌘ D = DELETE FILE
⌘ U = UNDO DELETE FILE
⌘ O = OPEN DISK
⌘ C = CLOSE DISK
⌘ N = RENAME DISK
⌘ K = COPY DISK
⌘ Y = VALIDATE DISK
⌘ E = ERASE DISK
⌘ F = FORMAT DISK
⌘ W = SELECT ALL PAGES
⌘ X = SELECT PAGE FILES
⌘ Y = SELECT BORDER FILES
⌘ S = APPEND PAGE
⌘ T = DELETE PAGE
⌘ R = RESET

GEOWRITE

⌘ X = CUT
⌘ C = COPY
⌘ T = PASTE TEXT
⌘ W = PASTE PICTURE
⌘ S = SEARCH
⌘ N = FIND TEXT
⌘ Y = CHANGE, THEN FIND
⌘ H = OPEN HEADER
⌘ F = OPEN FOOTER
⌘ Y = SELECT PAGE
⌘ ← = PREVIOUS PAGE
⌘ + = NEXT PAGE
⌘ G = GOTO PAGE
⌘ L = PAGE BREAK
⌘ P = PLAIN TEXT
⌘ B = BOLD TEXT
⌘ I = ITALIC
⌘ O = OUTLINE
⌘ U = UNDERLINE
⌘ > = SUPERSCRIPIT
⌘ < = SUBSCRIPT

GEOPUBLISH

⌘ G = PAGE GRAPHICS
⌘ M = MASTER PAGES
⌘ L = PAGE LAYOUT
⌘ P = PREVIEW
⌘ Z = ZOOM
⌘ ← = PREVIOUS PAGE
⌘ + = NEXT PAGE
⌘ T = TOOLBOX
⌘ S = SNAP
⌘ R = RACHET

GEOCHART

⌘ T = PASTE
⌘ R = CHANGE RANGE
⌘ M = CHANGE MARKER
⌘ L = CHANGE TEXT
⌘ G = CHANGE GRID
⌘ F = CHANGE FORMAT

NOTE PAD

⌘ C = WRITE NOTE TO TEXT SCRAP

For those who are interested the ⌘ symbol is not my creation but is available from MISTER G CHR+ font which is from a public domain disk.

If you use an earlier version of GEOS then some of these commands will not work for you e.g. from DESKTOP only ⌘ C and ⌘ O will work. However a number of the V2 commands are consistant with earlier versions of GEOS particularly earlier versions of GEOWRITE.

Article by Ross Edwards

DISPATCH DISK NOTES

COMMITTEE 1989-90

President R. Cloosterman 382-0781
Secretary Ms. C. Van De Belt 382-8660
Treasurer A. Heard 085 56-5828
Newsletter ED. J. Van De Belt 382-8660
64 Librarian J. Carey 294-8447
128 Librarian M. Tippins 381-3181
Comm. Member A. Morrison 085 56-5013
Our Disk and Magazine libraries are open at each general meeting from 7:30pm.

If you have any contributions for the newsletter, see Rob, Jeff or Jan.

NEXT MEETING

Our next general meeting will be held on the 19th DEC. 1990 7:30pm.
SUBJECT :- GAMES NIGHT.

LOCATION :- Meetings are held in the house behind the Salvation Army Hall at 186 Elizabeth Rd. in Morphett Vale, just in from Beach Rd.

MEETING RULES

- 1) NO SMOKING
- 2) NO DRINKING
- 3) NO SWEARING

Through the generosity of the Salvation Army, we are allowed to use the facilities in this house, in return for which we give them a relatively small donation. We ask for your co-operation in respect to the above.

While we can not control what people do away from our club meetings, Piracy of copyright material can not be condoned at our meetings.

DISCLAIMER

The views expressed in this newsletter are those of the writers, and are not necessarily those of the club's committee or members.

The use of the word "COMMODORE" in no way implies any connection with any organisation bearing that name.

No part of "THE DISPATCH DISK" may be copied or reproduced in any way without the written permission of the committee and the author.

WANTED

ASSISTANCE REQUIRED -THE CLUB STILL NEEDS THE ASSISTANCE OF SEVERAL MEMBERS IN THE FOLLOWING AREAS:-

- 1) Newsletter contributions
- 2) Expert Register. PLEASE help us to help others with their problems.

DEMONSTRATION TOPICS -If you have any requests for topics you would like to see demonstrated, speak up. Even, if it has already been done, and you missed it let us now. If there is reasonable interest, it can probably be repeated.

FUTURE MEETINGS - Help us to spread the word of our existence. Write out some small notices and place them where people will see them. Your local supermarket usually has a notice board as do some Newsagencies and Delis.

FOR SALE

PUBLIC DOMAIN SOFTWARE - We have a large range of PUBLIC DOMAIN Software for sale through our library. Prices represents very good value. Catalogue disks are also available for only \$1.00. See Jeff at tonight's meeting for any enquires.

CHEAP DISKS -How much do you pay for your blank disks?. The club is making bulk purchase of disks to help members save some money. The price of these disks is 70c per disk, which works out to be \$7.00 for a packet of 10. If you are interested in some, see Rob at tonight's meeting.

MEMBERSHIP FEES

The scale of membership fees for this year will be as follows :-

Joining Fee for new members	\$5.00
Membership fee (to A.G.M)	\$10.00

All previous members who have not renewed their membership are unfinancial and will have to rejoin the club and pay the joining fee again in order to add items to the club's disk and magazine libraries, we need money, so please pay up promptly.