

08 02 1992

Roy McIntosh

GERMANY

Dear Geos User,

A belated welcome to a new Geos year, in which there will hopefully be plenty of new developments and ideas coming to fruition. It is my pleasure to welcome you with an introduction to the Geos User Club in Germany. I shall not go into detail here in this letter, as I have already done so in the magazine Geos In Germany; suffice to say that it has been my wish for some time to spread the word about the excellent programmes and work coming from "this neck of the woods"

For those of you who may well not have noticed, I am English and have been working in Germany for a number of years. About two and a half years ago I joined the Geos User Club after having purchased my first piece of "decent" software for my old C64. Geos V2.0. I found the programme exciting and a pleasure to work with and the members of the GUC more than helpful. After first "finding my feet" and expanding my knowledge and software within the Geos programme line, I decided to try and do something about the lack of information filtering out of Germany to other Geos Users in the many english-speaking countries. My first step was taken when I took up contact with Frank Cassidy who runs the recently founded geoClub UK in Manchester, England. It was through Frank (God bless his cotton socks!) that I was to receive my first taste of international Geosing. He also supplied me with the first opportunity to spread the word via his club magazine. A number of you will have no doubt read some of the reports in his mag. Those of you that have will notice that a few of these reports are also in my GIG magazine, well what do you expect: **blood!!**

This magazine comes to you free of charge and is a culmination of weeks of translating various reports from our German **Geos Users Post** (GUP) magazine. Ask the wife, I think she kept count of the minutes, hours, days and months that drifted by for her, whilst being forced to listen to my mutterings about translating this and changing that. Anyway, after finishing the GIG, I sent it off to the GUC for their approval. They decided that one or two bits of my reports should be changed to supply as much information as possible, this was duly done by the GUC and the magazine was then sent directly on to the Laserservice in Switzerland.

All of this happened without me being able to recheck the work added by the GUC. Hence, the occasional drift in style used in some of the reports. This is not meant as a complaint aimed at anyone personally, but is meant as an explanation for the occasional deviation in style. I hope that you will enjoy the magazine and gain some pleasure and information from it that will help you in future. Why not try some of the software out, it is really very good, even with the additional cost of postage from Germany to where ever you may live, the prices are still very reasonable for the standard of the software on offer.

It could be possible that there will be another attempt at Geos In Germany at a later date, this depends on whether this one goes down like a "lead brick" or comes out "smelling of roses" I would say that "the ball is in your court"! If you like the idea of a publication from Germany, then drop me a line and let me know. It goes without saying that charges would have to be levied for the next one. The GUC is covering all of the bills for the printing, postage and other costs for this GIG. The club is not "rolling in it" and so you, the reader would have to pay something for any future magazines to be printed.

Thats about it folks! Bye, for now and happy reading.

Roy McIntosh

Roy McIntosh

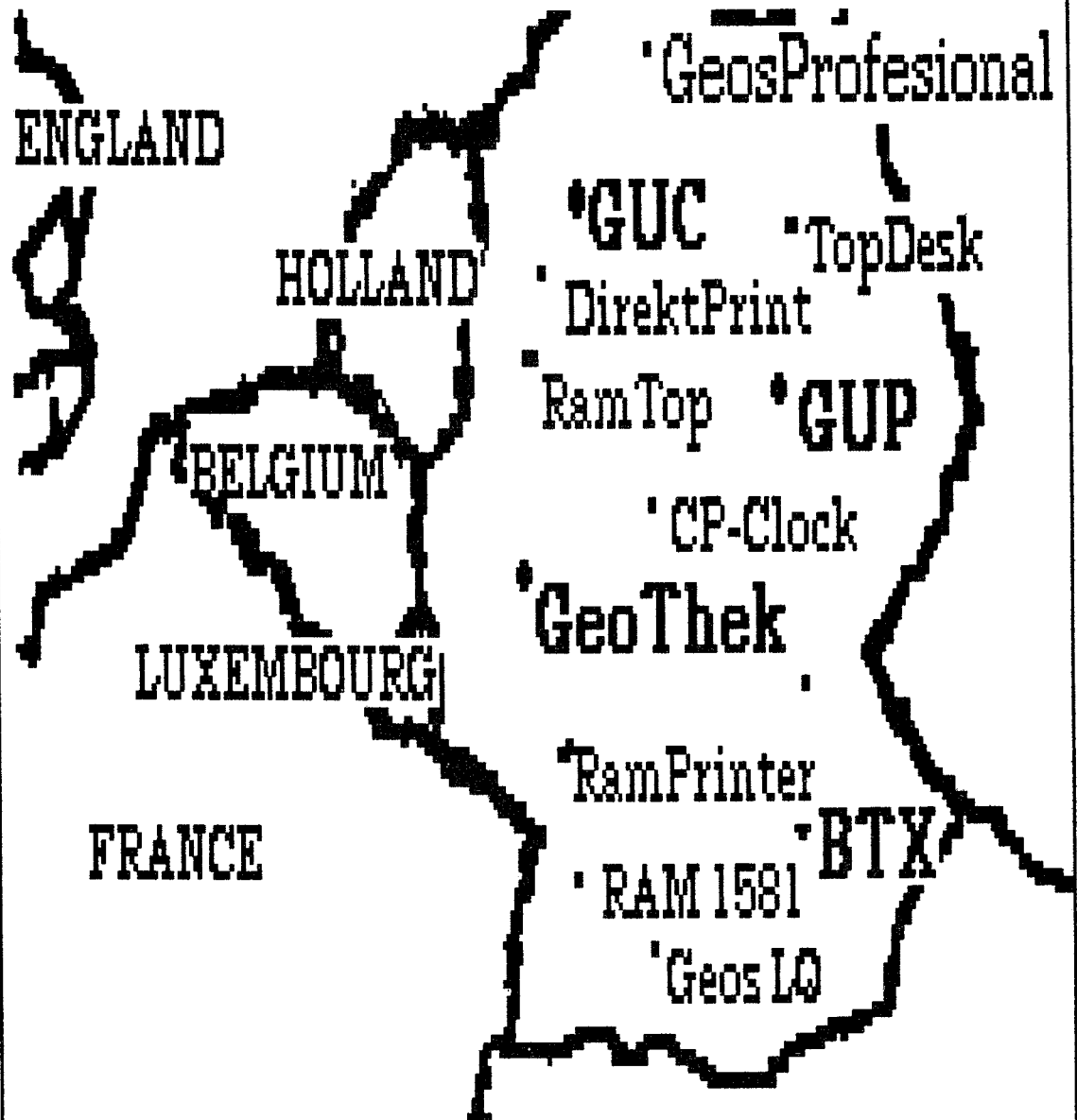
09.02.1992

P.S.:

This letter was printed using Geos LQ. An extensive report on Geos LQ can be found in the accompanying magazine on page 10. The computer configuration used to write this letter and the "GIG" was as follows: C64 II, 1541 II, 1581, 1351 mouse, Star LC 20 printer and Geos V2.0, with Geos Publish being used for the "GIG" magazine! I was also kept on time with the Cassette-Port Clock, a report on this piece of hardware can also found in the "GIG" magazine on page 13.

GEOS IN GERMANY

G I G



This Magazine is dedicated to the Geos Users of the Geos User Club in Germany. Up until now most of us "Users Only" in the club were dependant on our American programming colleagues to supply us with more programmes. The GUC has now bettered some of the Top Programmes from the USA with a new Geos Line of it's own, called Geos Professional; read on friend, read on and be amazed! If at the end of reading this magazine your not, then drop me a line, and tell me why! My address is as follows:

Roy McIntosh,

Germany.

Further issue's of the GIG are planned, if you like it ...

Introduction

Addresses:

The Author's:

Roy McIntosh

Germany

The GUC's

Geos User Club
Thomas Haberland

Germany

Disk Library

Geothek Versand
Martin Sauter

Germany

GeosProfessional

Wolfgang Pannes

Germany

CP Clock Sales

Joerg Spross

Germany

Regional Groups
Info from:

Roland Deiss

Germany

Laser Service

Laser Service

Switzerland

Before you get down to reading the rest of the magazine glance through this Intro and make a note of the various addresses listed on the left. Should you have any queries, problems and or suggestions (only clean ones accepted!) jot them down on a piece of paper and send them to me.

This magazine, "Geos In Germany", or in it's shortened form "GIG" developed from an idea bought on by the amazing pace of soft- and hardware developments here in Germany. The main aim of this magazine is to inform all non-German-speaking GeoUsers in as many English speaking countries as possible, of the many developments to Geos related software and hardware hits, which have been programmed or developed here in Germany. The reports consist of translated reports on German programmes and hardware that have appeared in our own Geos User Club magazine, as well as various reports from me that have been collated over the past six months.

Before signing off I would just like to thank a number of people for their help and support during a time in which, nails were bitten, hair fell out and a number of strange curses and oaths could be heard emanating from my "Office". To Judith, my poor wife, thanks for putting up with my mental absence over the past months (I was always around bodily, but my thoughts were constantly elsewhere). To the GUC and most of all to Thomas Haberland, who produces our club magazine, thanks for your support; I actually managed to finish it!! To all of the Geos programmers in Germany and elsewhere, keep up the good work, lads! And finally to the new English geoClub and its hard pressed mentor Frank Cassidy, keep your chin up and good to have you around.

That is about it , all you have to do is read on, if you like what you read, then drop me a line, if you don't, drop me a line anyway and tell me where I went wrong. Shall I do this again I wonder?

The Geos User Club GbR

The Geos User Club (Germany) is a registered club run on an entirely voluntary basis by a group of highly devoted and motivated Geos users. The club is run on a none-

financial-gain basis, other than the day to day costs of equipment and the necessary publishing costs for the club magazine. The method used to raise the money is by means of an annual club membership fee of DM 36.- . Further costs of running and maintaining a club library of PD & shareware programmes, as well as software which has been programmed by programmers working either on their own merits, or in the name of the GUC, is levied through a modest charge made before delivery of the software. A nominal cost of DM 5.- for return-postage and where necessary packing costs are also to be paid when approaching a GUC active-member for help, in which a written reply is necessary. A further cost-related part of the GUC is its own computer mailbox-programme, called "BTX". This is basically a computer linkup and mailbox, which is made possible via the telephone lines. The mailbox is a fairly new addition to the GUC, and is fast becoming a hot favourite amongst the lucky people, who have the necessary hardware to log in to it.

The GUC's membership at present (18.01.92) stands at about 2300 registered members, male & female. The club can boast a number of very talented programmers who are at present extending the range of Geos related software, which in turn will make the Geos software packet, marketed by the company "Berkley Softworks" of USA, into one of the best programme packets for the C64 & C128 computers from Commodore Computers Inc. Other active members, of which there are many, carry out other jobs on a purely voluntary basis, such as translating the many american programme instructions into German that accompany the Geos programmes, utilities, and applications. Since April '91 PC/Geos (Geoworks Ensemble) is added into GUC activity's.



The GUP (Geos User Post)

The Geos User Post (from here on called GUP) is the club magazine, which is produced by the GUC using GeoPublish and printed by a company, Laser Service, in Switzerland using GeoPubLaser. It is produced once every two months, and contains reports in the "**German language**", tips & tricks and courses on the use of Geos software and the related Commodore hardware. The GUP consists of at least 16 pages and relates to a large readership of German, Dutch, Austrian, Swiss members (totally 13 countrys). The mainstay of the readership is presently in Germany. The GUP is a very important and informative part of the Geos User Club helping old and new members alike with the day to day problems and questions, which confront the Geos user. Bundles of the printed magazines are sent out to a number of active members, who live in various parts of the country, these members take over the dispatch to the other remaining members in their own areas.

The Geos Specialists

There are a number of members who are very active in the the day to day running of the club. At the top of the list comes our club chairman and the producer of our GUP (club magazine). These two people are the founder members of the Geos User Club and have watched the club grow during the past four years from a club with a small membership into what it is today. Next along the line comes the person who runs our Disk Library. There are also a number of people who make other important contributions in many other ways.

We have a number of people who have specialised in certain pieces of hardware or various programmes. These people are the sources of information and help

for anyone who has a related problem with, for example, the printer LC 10 or GeoPublish, GeoCalc and various other programmes. These people have given permission for their names and telephone numbers as well as addresses to be published in the GUP. Due to an ever increasing number of enquiries and calls for help, a small charge has now been introduced as recompence for the valuable assistance given. Is the price of DM 5.- (about two pounds) too much to ask to solve that printer problem?, after all, the time it takes to solve a problem can be quite long! With the present number of members at 2300, if only 5 people a night phone with a problem(sometimes its more) and if each problem takes about 30 minutes to solve..... well think of the time and energy that is required. This could be put to a different use, say programming, for example!

As well as the people already mentioned there are the unsung heros who often work in the background and seldom get a mention. These people translate the many American programme descriptions and instructions. We also have members who assist with the delivery of the GUP every two months. In fact although every thing is done on a purely fun-basis, the amount of work now involved is definatly on a par with a full time job!

There is a Dutch representative who can be contacted by anyone wishing to expand his Geo-contacts to Holland. We have a specialist who is conversant with GeoProgrammer and Mega-Assembler. Anyone wishing to inform himself of the addresses of other members with similar hard- or software setups can receive a copy of the members list for his area. This includes an ever increasing list of club members, their telephone numbers, addresses as well as soft- and

hardware setups. Naturally the addresses and telephone numbers are only submitted with agreement of the person concerned.

On filling out the membership application form, a would be future member is asked to quote his hardware and software setup. Another question he is asked to answer is whether he would like to be an active or a passive member and if he wished his address to be passed on to a third party, or included in the area-list of GUC members. If he does not wish for his address to be made public, then it is not. On submitting the membership fee a new member receives a free sample of a previous copy of the club magazine, as well as a copy of the club regulations covering copyright laws, use and abuse of other club members, as well as the general ideas and aims of the Geos User Club.

All members have access to the GUC, it's Disk Library and all can make use of the GUP to submit reports, letters and adverts. Non-members are also given help providing that they include the DM 5.- for the postage, packing and the time taken in answering the letter. Non-members do not receive a copy of the club magazine or have access to the club GeoThek (Disk Library).

Roy

The Geos User Club Adress

Thomas Haberland
(Thomas speaks English)

Germany

My home address, for those who wish to rid themselves of their complaints and suggstions about the GIG magazine, is as follows:

Roy McIntosh

Germany

The GeoThek

The GeoThek is the club's programme disk library with Shareware and Public Domain programmes. It contains a number of american Geos disks from various programmers as well as a growing number of Geos programmes that have been programmed in Germany. The American disks come complete with the usual programme descriptions usually in the form of GeoWrite files. More and more of the American disks are being completed with a German version of the American instructions, thanks to the hard work of a few "english-speaking" GUC members!

There is also a new programme line in the ever expanding German Geosworld. The programme line is called **Geos Professional**. The programmes allow Geos to be used in a much more professional way than ever before and at present incorporates about seven major programmes, including a new printer programme called "RamPrint", this enables multi-tasking with the C64/C128 in combination with Geos and a Commodore REU. As well as a new DeskTop programme, called "TopDesk", which completely replaces the usual DeskTop, and uses windows for data transferal instead of pictograms.

In a few weeks a very new programme will come: **CLI** (command line interpreter). Also this is a complete replace for the original Desktop, but it works without graphical tools! CLI does work very fast and easy, with a "prompt" and all ordernames come from IBM compatible DOS.

There are also a number of smaller programmes which enhance the use of various pieces of hardware and software alike, such as RamTop (only for Geos 64 V2.0 and a Commodore REU); this programmes enables a converted DeskTop to be locked into the REU and means that the DeskTop on all other disks can be left out saving more space for other programmes of your choice.

The price of DM 6.- (about two pounds) for the shareware and PD (public domain) software is very reasonable indeed. There are a great number of very good programmes in our disk library and the nominal fee covers the porto and packaging costs from the GUC to the club member. The average price for the more larger programmes, including the new programmes in the commercial (c) GeosProfessional line cost between DM 15.- & DM 21.- (between five to seven pounds).

All of these programmes come complete with a very extensive and clearly written users manual. All of the German programmes come with programm instructions in the German language, although there are programme instructions already being translated into English, especially for the new Geos Professional line. Lets hope that the interest in the disks warrant the extra work. It's all up to you now!

Geos Professional

As from the 01.07.1991 the GUC took over the sales and distribution of the new software line Geos Professional. This new line in Geos Software consists of commercial programmes which have been programmed by some of the GUC's top German programmers. When ordering the software, please add DM 5.- for postage and packaging to each order.

- | | |
|-----------------|--|
| 1) Wordsplitter | DM 16,80 (for 40- and 80 columns) |
| 2) MakeRamTop | DM 14,80 (<u>only</u> with Geos 64 + REU) |
| 3) DataProtect | DM 14,80 |
| 4) Tools | DM 19,80 |
| 5) RamPrint | DM 14,80 (English version) |
| 6) TopDesk | DM 21.- (English version) |
| 7) RamProcess | DM 5.- (English version) |

"MakeRamTop" only works in conjunction with Geos 64 V2.0 and with a Commodore REU !

RamPrint requires a Commodore REU. Both of the above mentioned programmes will work together with an upgraded REU. To place your orders write to: Wolfgang Pannes, see Page 2.

The Annual GUC Meeting

Once a year there is GUC members meeting. In 1990 about 50 people took part. The meeting is a medium through which new ideas and resolutions are introduced and committees are elected, reelected and/or disbanded. The meeting takes place over two days and a number of workshops in the use of Geos related software and hardware can be made use of. The time is also put to good use by old and new members alike, who take advantage of the opportunity to meet old friends and make new contacts and other Geos fans. Discussion groups are formed, tips & tricks are disclosed and software is sold and or discussed. Two days in the company of like-minded Geos fans is enough to persuade most new GUC members that they are in good hands and that joining the Geos User Club was about the best move they had made, bettered only by the actual purchasing of the Geos software itself. The option is open to all members to take part and whether actively involved in the discussions or just "sitting on the fence" whilst listening to the friendly and informed chit-chat of programmers and members, it is a chance for the Geos-user to immerse himself in his hobby for two complete days. This is not on offer any where else and should not be missed. Naturally,

the two day stay in the hotel with full board has to be financed by each member. The seminars and other talks are organised by the clubmanager and secretary. 1991's club meeting took place from the 01.11. to the 02.11. The cost of taking part on the meeting including fullboard was DM 80.- (about 27 pounds) and the following workshops were on offer:

- 1) General Information
- 2) Text and graphic with GeoPaint and GeoWrite
- 3) GeoPublish
- 4) Programming (Megaassembler & GeoProgrammer)
- 5) GeoFile & GeoCalc
- 6) GeoWorks Ensemble (PC-Geos)
- 7) Hardware (additional alterations C64 /128) & BTX

Another interesting part about the annual meetings is the fact that the spouse and/or children are not closed out. In fact they are welcomed along to the talks and providing that they can cope with all of the computer banter and discussions, they are welcome to take an active part in the meeting. There are breaks for coffee and meals and in the evening there is also a chance to get together to discuss various items, or just have a drink and relax.

Although the meeting takes place every year it does not lose any of its effectiveness and is a much awaited part of our club activities.

Of course the work of preparing the meetings is quite large and much of it has to be delegated to enable the brunt of the workload to be carried by a number of people. For a long time our much overworked club chairman J. Heinisch and the vice-chairman Thomas Haberland shouldered the main responsibility. This is now being delegated to the newly formed local GUC clubs on a national / regional basis. Each one should take its turn in preparing a meeting.

The Annual Club Meeting 1991

The GUC's annual meeting for 1991 is now once again a thing of the past. It took place from the 01.11 to the 02.11. in a venue that could be classed as more than different. The venue for this meeting was a cross between a youth hostel and youth centre with ample space for the various Geos workshops and main meetings to take place. The more than large dining hall was at times hard pushed to keep up with 120 Geos fans, hungry after their hours of debate, courses and general chit chat. But they coped!

On the Friday, 01.11. the number of people coming to the meeting was discovered to be more than were originally expected. The official start was planned for about midday, but by about 10.0'clock already 100 people had arrived. After the official greetings and opening of the meeting by our Club Chairman and Vice Chairman things quickly got underway. The meeting kicked off with a general run-down of the past years events, good and bad. And an idea was given as what the next Geos Year has in store for us. The Geos User Club should be represented at the next Trade Fair in Hannover by our Chairmann, as it was this year. The Trade Fair is a focal point for thousands of visitors every year and is a good chance for more publicity.... more about this at a later date.

After the introductions were over the various workshops got underway. All of the workshops were a great success and took place over both days being held at least 5 times each to enable all, who were interested, to visit each one.

During both days, around the 20 computers which had been built up in the central hall throngs of interested GeosUsers could be seen discussing this programme and that configuration. About 50% of

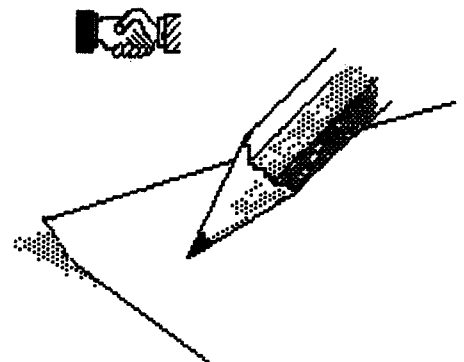
the computers were PC's with the fairly new Geos Ensemble programmes being shown off by their proud owners. About 270 GUC members, out of 2300, are ardent PC users and GeosEnsemble has now been integrated into the club.

The first day officially ended at six in the evening, but after the evening meal everyone was back again at the computers exchanging information and ideas. This went on until about 02 O'Clock on Saturday morning. I hear some people actually did make it to the bar, I never could find out what time this was!

The meeting was visited by a group of Dutch Geos Users on the Friday and a Belgian User group on the Saturday. A photographer/reporter from the German 64'er magazine also paid us a visit and a report should be in the next edition. The meeting ended on Saturday the 02.11 at about 08 O'Clock in the evening and everyone left sure that all had been worth the effort and that they would come again next year.

The planning for the club meeting in November 1992 has already begun. At the same place again, a little city near "Recklinghausen", we will meet many members.. Every regional group in the GUC should get an own part of work. I wish them lots of luck!

The official announcement of this meeting will come in the April issue of the GUP.



Other User Groups

England

Club Name: *geoClub UK*
Club Leader: Frank Cassidy

Club Address:
geoClub
Frank Cassidy

Manchester
England

Luxembourg

Club Name: *Geos User Club*

Club Address:
Yvon Dostert
Geos User Club

Luxembourg

Holland

Club Name:
Commodore Computer club

Club Address:
Commodore Computer Club

Holland

Switzerland

Club Name: *Geos User Club*

Club Address:
Juerg Surdez, Geos User Club

Switzerland

Austria

Club Name: *Geos User Club*

Club Address:
Guenther Rauscher
Geos User Club

Austria

The Mailbox Programme

The GUC's mailbox programme is a relatively new addition to the GUC. It is basically a computer-linkup via the telephone lines, which can be found in the German (BTX) Bildschirm Text (computer mailbox), which is something similar to Q-Link in the States, or Presstel in England. The BTX mailbox is a giant host mailbox in which hundreds of smaller mailboxes are to be found. The GUC's mailbox is one of many, but practically the only one that caters solely for the Geos-orientated user. The breakdown of the mailbox is as follows:

- 1) Information to the Geos User Club.
- 2) Discussion round and about Geos.
- 3) Selling & buying.
- 4) Tips and Tricks
- 5) Geos special edition magazine and it's problems.
- 6) Geos Software on disk.
- 7) Geos products and suppliers.
- 8) Payment of contributions to the GUC.
- 9) GUC Mailbox ==> sending of mail to other GUC members.

Heinisch, GEOS USER CLUB

GEOS USER CLUB

Hauptinhalt

- 1 Informationen zum GEOS USER CLUB
- 2 Diskussion rund um GEOS
- 3 Suchen und Verkaufen
- 4 Tips und Tricks
- 5 3. GEOS Sonderheft, Probleme ?
- 6 GEOS-Software auf Disketten
- 7 GEOS-Produkte und Anbieter
- 8 Spendenseite
- 9 Mitteilungs-, Antwort-, Dialog- und Bestellsseiten

The Mailbox offers the possibility for the interested User to keep himself informed as to the changes in the GUC and the German Geos World. The Mailbox has a part of the programme reserved for Tips & Tricks to Geos, an electronic pinboard for Geos related discussions, questions and answers.

Another part of the mailbox is set aside for the fairly new PC-Geos. This is an ever growing part of the GUC in general. Some members are becoming interested in the new programme "Geos Ensemble" for PC's, and so this programme has now been fully integrated into the GUC's itinerary, although having said this we still have a large hardcore of the membership who are devoted Geos-Users.

A further part of the Mailbox contains PD & other forms of software. These programmes can be downloaded to the home-computer for private use at a very small cost. The sort of programmes that can be found in the Mailbox stem from the Disk library and cover a range of uses, from the small printer programmes to the larger mini-applications such as FormPrint 1.3. This application allows the C64/C128 to be used as a typewriter for filling out forms, etc.

This kind of mailbox is very interesting for all users. All actual News and Informations are most published at the same day they arrives. More and more computer people use the BTX system. Very new: the GUC does now offer the special software "BTX Comfort" and "BTX Code" for the Commodore BTX II Module.

Every day hundreds of people read the Geos User Club BTX pages. To read it, it isn't necessary to be a Club member, the system is for all people who have the special BTX hardware.

How Big is Your REU?

The Mega-RAM

For a long time the 512 MB Ram Expansion Unit has been the largest REU available for use with the C64 / C128. In the past there have only ever been two REU models that have worked successfully together with the software packet Geos 2.0 from Berkley Softworks. The REU 1571 & 1570 could be configured as a RAM 1541 or RAM 1571 respectfully. These days are now gone. The Geos User Club has made it possible for users to have their REUs upgraded in stages (in units of 256KB) reaching a maximum of 2MB.

1) To enable the extra REU capacity to be used a new PD **configure** file, version 2.1, for the C64 and a seperate version for the C128 has been developed and can be obtained from the GUC free of charge. (this new Configure was patched by Jim Collette, a known US programmer.) To enable a fast dispatch of the new file to be achieved, it is advisable to send in a formatted 1541 disk, plus the obligatory DM5.- for the return postage and packaging. The disk and order should be sent to the GUC's address on the inside page if this magazine.

2) The new Configure runs on the German & the American Geos programmes.

3) Up to the present date a great number of REUs have been upgraded for GUC members. This has happened without any problems being experienced by either the people updating the REUs, or the owners of the REUs at a later date, all of the updated REUs functioned perfectly and to the complete satisfaction of the owners. In fact, it can be quite honestly said, that once an updated REU is put to use, extended to either 1MB or 2MB, it is hard to imagine working in a GEOS environment without it!

4) Many of you will certainly ask what the extra storage capacity can be used for? The main advantage of owning a larger REU is the possibility of using it to enable you to configure a couple of large RAM drives! Anyone, who works with large amounts of files at once, for example with GeoPublish (i.e with the LW fonts), or when programing, will be overjoyed at the extra storage space.

It is not advisable to have the REU extended at anything less than 1MB! It is necessary to have at least 790 KB to configure a RAM 1581. If you own a REU 1570 you already have 512 KB, with one unit more (= 256 KB) you will only reach 768 KB!

With a REU of 1MB you can just configure one (!) RAM 1581, with a maximum of 2 MB, two RAM 1581's, theoretically it would even be possible to configure a third drive, a RAM 1541, as well as the two 1581 RAM drives. The reason that it is only theoretically possible to do this is that very few people would want to work with 3 RAM drives!

A more efficient DeskTop !



DESK TOP

RamTop



MakeRamTop

The Programme RamTop is a small, but very effective programme, which not only will give you more space on your disks, but will also help you work more effectively within a Geos environment. The programme only has one shortcoming, it can only be used together with a **Commodore 64 and Geos V2.0**, not with the C128! To run this programme you must have a Commodore Ram Expansion Unit (REU) (17xx from 256 kB up to 2 MB) in your setup.

So what is RamTop? After booting Geos for the first time, RamTop checks to ensure that Geos 64 V2.0 and a REU are present. If all is as it should be, the programme patches (alters and transferes) the DeskTop into the REU. To enable this to happen the DeskTop and the programme RamTop must be on the same disk.

You have to do this only one time, the new patched file "Desktop" should now copy to the boot disk. The Desktop file pictogramme is changed, so you can see it's patched. (see the titel line)

After being transfered (patched), the new DeskTop is copied into a "hidden" part of the REU memory! Every time the DeskTop is loaded, it will now come directly via the " hidden " memory in the REU.

The advantages are many. Fistly, the usual DeskTop file can now be erased from all of your workdisks. Not only do you get more storage space for other programmes, but you also speed up the time of each access.

Secondly, the DeskTop is also accessable even when the REU is used as drive "C" (drive 10), i.e. as an inactive drive. Under normal circumstances, if you wanted to check an Infoblock, and the disk with DeskTop was in drive "C", a dialogue box would appear with the information: "Please insert a disk containing DeskTop into drive...." Not any more, now the Infoblock appears quick as a flash!

If you copy the patched DeskTop onto your Bootdisk the programme checks if RamTop is already active during the starting process, i.e. it checks whether RamTop is already positioned in the REU, if not it copies itself directly into the REU!

If the RAM-Desktop is copied over at any time, for instance with a debugging programme, RamTop copies itself into back into the REU again. Should the altered DeskTop not be found on the disk, a dialogue box will appear asking for a disk with tha altered DeskTop to be started.

There are, however, two small disadvantages with this programme. It is hardly worth bringing to your notice. The "hidden memory" in the REU is usually used for the "DMA", i.e. for the fast movement of storage-data. As well as this; it was also possible to preset the drive with the programme configure. Both are no longer possible, or necessary. The memory area in the REU is required for the DeskTop. RamTop automatically switches these options **off**, to check just take a look in the file "configure". If you reset these options in the file "configure" the RamTop will be erased from the REU.

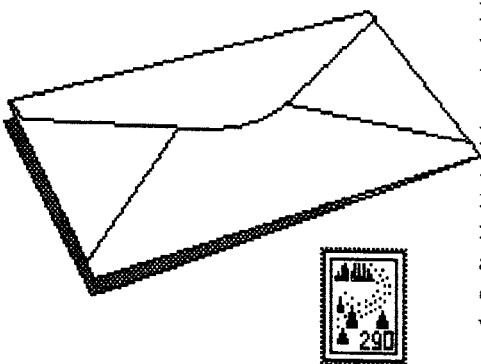
RamTop does work together with all known Geos software. Only by using TopDesk, the other replace for original Desktop, and geoROM (Geos in a module), RamTop can't run! Further I think it doesn't run together with GeoWizard, the new US programme from Jim Collette. The reason: These programmes use the "hidden memory" so RamTop can't use it, too.

RamTop is one of the programmes belonging to the new Geos Professional line. The programme can be obtained from the GUC at the following address:

Wolfgang Pannes

Germany

The programme costs DM 14.80 plus DM 5.- for postage and packing



New Input Drivers

Two new mouse drivers are also on the same disk alongside the already mentioned programme **RamTop**. What is completely new about these two mouse drivers is that both mouse buttons can put to use.

The mouse driver **V1** enables a simple single mouse-click with the left mouse button to be achieved. The button can be clicked as often and as fast as possible, the only thing that happens is a single mouse click is carried out. This driver can be used to invert the file icon, to enable the file to be copied, for instance. With the mouse button on the left you cannot start a Geos application or programme of any type! This can only be achieved with the right hand button. With **one** click on the right hand button a double mouse-click is simulated. This means with a single press of the right hand mouse button an application, programme, file or desk accessory of your choice can be started.

The mouse driver **V2** works as normal, i.e. the left hand button works just like the normal mouse programmes. With the right hand button a single mouse click is simulated to achieve an inverted programme icon.

Both programmes are real and effective alternatives to the usual Geos Input Drivers. Above all, the driver **V1** can be of great use in putting a stop to those inadvertently started programmes. In fact with the driver **V1** unwanted programme starts are a thing of the past.

I have personally worked with RamTop and both of these drivers for about one and a half years now. They have worked without any problems at all and have increased my efficiency and speed whilst working in a Geos environment.



COMM1351U1

The Laser Service

The Laser Service in Switzerland offers a fantastic opportunity for all Geos Fans, working on large or special projects, to have their work printed on a Postscript Laser Printer using **GeoPublaser**. The results are more than worthwhile; this magazine was printed in Switzerland using the mentioned technique. The resulting printout can be on either A4 or A5 paper.

The prices are quite reasonable :

A normal A4 page will cost DM1.-
A poster (=200% enlarged) costs DM 4.-
Enlargements are also possible for DM 1.- for necessary page required.

Is it worth it? I can hear you say. I also asked myself this question! But, for someone who is starting his own User Club or wishes to publish his own magazine the end results speak for themselves and after all, the first thing a person will see is the superb layout in question.

Make a backup of your files and make a printout on your matrix printer. Copy all of the necessary GeoWrite, Fonts and GeoPaint files on to a 3 1/2" disk and send them to the address below.

Please send only copies of the Master Files. The Laser Service does not accept any responsibility for lost or incomplete information. Your disk will be returned along with your printed work. Each order is started and where possible completed on the day that it arrives at the Laser Service in Switzerland.

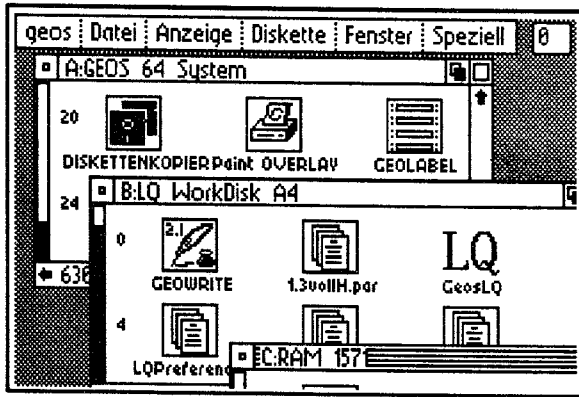
Notice that you have to use the special LW_Fonts (Laserwriter Fonts) to get the high quality printout!

Written Order:

Please inform the Laser Service exactly what you want done and how many times, you wish to have your work printed.

Continued on Page 12...

A fantastic new Desktop with Window's !



The TopDesk

Another first from the versatile programmers of the GUC in Germany is an alternative Desktop programme. This programme is new to Geos in many ways, but the most important being that it allows file transfers by the use of windows!

TopDesk is a complete replacement for the usual Desktop, which is part of the Geos V2.0 programme packet, it runs on both the C64 and the C128. Due to its size it only runs on the C128 in the 40 character mode. The programme automatically switches between the two modi (40 & 80 character mode) everytime a programme such as GeoWrite C128 is started and closed down.

An own 80 column mode for Geos 128 will come soon, further a special english translated version. Both should be available in March 1992.

New with TopDesk

- If used together with a REU (regardless of size), it is possible to run **four** (4) drives. TopDesk does work with Commodore REUs 17xx and BSW REU "geoRAM"!
- Each drive is allocated it's own window, it is also possible to place four "drive windows" on the Desktop at once.
- Each window can be varied in size or form and placed anywhere on the Desktop in any order of preference, including overlapped.
- To start any given drive all you need to do is to click the corresponding window. The window is then fetched to the front of the Desktop and the drive is on line!
- With this programme it is also possible to make use of "folders" (subfiles), with any floppy drive!

- The files are presented in the "drive windows" in the usual fashion. As well as this, the amount of space available on the remaining Desktop is shown on the left hand side in optical form in the style of a barometer-like scale. The files are also numbered for easy reference.

- All file functions can be started with a double click even if the files are depicted text form, instead of the usual pictogramme.

- All key-combinations remain the same as with the usual Desktop.

- All other Desktop functions remain unchanged!

TopDesk cuts a much more appealing style when compared to the usual Geos Desktop. Everytime a drive is opened or closed a graphic can be seen showing which drive is responding. After starting up your system all of the window specifications can be seen exactly in the order, size and configuration as they were left on closing down.

Many of you will no doubt ask how it is possible for your Geos programme to suddenly be able to cope with four drives! In principle it is theoretically possible for the present system to cope with four drives. Berkley Softworks have only allowed the use of two active drives with Geos. To enable this new Desktop to function properly, one or two safeguards have had to be included into the programme.

When, for example, you try to start a file from drive C or D, TopDesk presents a dialogue box asking whether you require the drive to be reconfigured. To enable you to make the correct choice, a dialogue box appears offering various choices. This reconfiguring of the drives means basically that the drives C or D can be reconfigured as drives A & B. It sounds very complicated, but the programme carries the brunt of the work and most of it happens automatically, although some of it can actually be taken over by the user.

If the TopDesk file is copied onto the main Geos Bootdisk the programme automatically starts whilst Geos is being booted. To enable this to be carried out, however, the file must be first renamed "Desktop". The renaming of the TopDesk file can only be done in a "TopDesk" environment. The original Geos Bootdisk does not allow alterations to be made to the main boot files or Desktop file. The alterations must first be made to the TopDesk file and then the file can be transferred to the Bootdisk.

Working under TopDesk is very easy, the big manual does contain all needed descriptions.

GEOS LQ - The Perfect Print Programm

GEOS LQ is a separate application, with which Textdocuments can now be printed using **GeoWrite** and prints in almost Laserprinter quality! An optimum printout can now be achieved from your printer and an excellent printout can be obtained from most 9 and 24 needle printers!

The resulting printout is achieved without the usual rough step-like edges appearing to the letters.

Geos LQ is one of the first German programmes to come complete with an English Users Manual and English programme info-block as well as all of the internal programme instructions translated into English. This programme works with both the German and the American Geos kernel. In the USA it's called "Print Perfect".

Printer problems should now be a thing of the past, as all Epson-compatible printers are supported. The method of connection is immaterial either a serial or parallel linkup is possible. Parameter files, in the form of GeoWrite-files, include all of the relevant information. Sample-files, which can be used for practically all of the printer types, are supplied ready for use. Personal printer setups can be carried out with ease.

The **Geos LQ** programme can be obtained in the basic standard packet with two disks containing the main programme, **Start LQ** (a special desk accessory) and various other programme files and includes **7 LQ Fonts**. The standard packet costs **DM 49.-** plus DM 5.- for postage and packing.

The complete packet consists of 4 disks containing the usual printer files, other programme files and **45 LQ Fonts**, the price of **DM79.-** for this collection of excellent Geos software is very reasonable indeed.

GEOS LQ functions in a similar way to GeoLaser. This means, where ever possible, that the largest font size is used to compute the print-files necessary. **Seven** specially made LQ-Fonts are delivered with the main programme.

As **Font-Utilities** are also supplied, it is easy to make new Fonts and the alteration and changing of existing normal Fonts into LQ-Fonts is now "childs play"!

A clearly explained, 40 page Users manual is supplied. The manual is possibly too professionally explained in places, however everything is well laid out and well documented.

A further mention should be given to the following points:

- GEOS LQ functions together with GEOS from the Version 1.3 upwards, including all of the corresponding GeoWrite versions, as well as in the 80 character mode on the C128.

- GEOS LQ can *only* print GeoWrite documents !

-The number of printed copies can be preset, e.g. a complete document could be printed 999 times!

-The print programme can be started from a GeoWrite document through the use of a supplied desk-accessory called '**Start LQ**', as well as from any other application. If required the Text document can be used to pre-set the programme parameter for printing.

- In GeoWrite all of the settings (Styles, Tabs, bordersettings, etc.) can be used.

- After printing is finished it is possible to return to GeoWrite, even to return directly to the

previously printed document or to the Desktop!

- Pictures in GeoWrite can also be printed in high resolution quality (!) without any problems !

Disadvantage:

The time of the printout for a single side takes a number of minutes, regardless of the parameters used.

Along with the main LQ programme and the other programme utilities there are also a number of brand new **printer drivers** for use with *all* other Geos applications.

These new printer drivers work on a special interpolation method, the printer drivers achieve about the "highest quality" printout that can be achieved with a C64/C128. These new printer drivers come complete with all of the main programmes on the disk and are worth every "penny", "Mark" and or "\$" you pay!!

You can really say these "Opti" drivers are the **very best print drivers** which does exist ! Even on a normal 9-pin printer the printing can look like a laser printout, if you use a good font. The printer is used with his maximum print resolution.

Programme Pakets by:

Dieter Marten

GERMANY

Standard packet : DM 49.-
(with 7 LQ Fonts, Font-Utilities and New Opti Print Drivers)

Complete packet : DM79.-
(with 45 LQ Fonts, Font Utilities and New Opti Print Drivers)

Plus: DM 5.- for postage and packing.

RamPrint - Printing in the Background

Geos has always been capable of running more than one programme at once, although up until now the possibility has never been put to use. With the Ram-Printer programme multi-tasking in a Geos environment is now not only been made possible but also very practical.

During the time when a document or even graphics need to be printed (using a longer printing time - to ensure maximum effect), it is necessary to enable a printout to be carried out which is interrupted for short periods only.

RAM-Printer fills the requirements, using one multi-programme, to print a document whilst you continue to work on a second document or graphic of your choice. The only necessary additional hardware for a Geos User is a **Commodore REU** with a minimum of 512 kB Ram.

The complete software packet comes on a single 5/1.4" disk, which is copy-protected, as well as a 14 page user-manual. As with other Geos related applications this one also has to be installed before it can be used. Before installing the programme, but after opening the disk on the Geos DeskTop, only one programme icon will be seen. Start this will decompress the containing files. Copies of the original disk can only be made after being installed.

After the procedure, which is very simple to carry out, a number of programmes can be seen on the disk DeskTop. The programmes are as follows: RAM-Process, PrinterBuffer, RAM-Print, Save

System, ClockV1.0, a GeoWrite Preference file with the name PrintBuffer.cfg, as well as the programme used to install the disk InstallPB.

RAM-PROCESS is an integral part of the main programme and is a public domain programme which can be obtained seperately. This is a multi-tasking utility which is linked to the main Geos Disk Operating System. Ram-Process allows up to 127 different programmes to be operated in the

RAM-Process is an auto-start programme; this means, if you copy it on to the Geos StartDisk it will automatically install itself and be working directly after the initial boot-sequence has ended. It can also be copied onto all other disks and be activated as any normal Geos programme, i.e. with a double click!

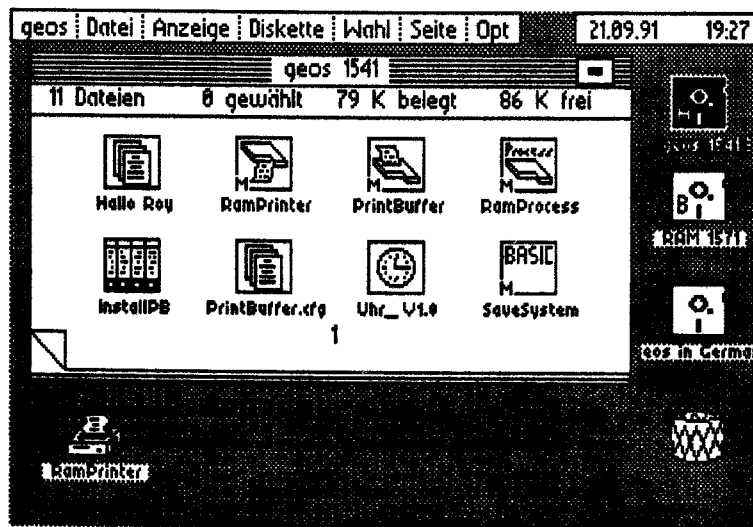
As this programme is also an important part of the workings needed for data-storage, it must be started first.

Printer Buffer

This is the actual printer spool-programme, and the programme workhorse. The method in which the programme works is very clever: As with most Geos programmes it is started by a double-click on its icon from the DeskTop. After starting the programme a dialogue-box will appear in which it is necessary

to select the required printer driver to be used for the printouts. After selection of the appropriate printer driver a second dialogue-box appears in which various programme parameters are displayed, these settings can also be altered. The parameter settings are provisionally setup when they arrive so a single click on the OK icon will allow the programme to be exited to enable a return to the DeskTop to be made.

From this point onwards the printer drivers name *RamPrinter* can be seen in the bottom left hand corner of the DeskTop, where the usual printer icon can normally be seen. This driver must now be copied on to all work disks to enable the main programme RAM-Printer to work.



REU. The programme determines the amount of space available in the REU during the time in which it is being booted.

The number of free blocks is shown during the programme-start, each block is 256 Bytes in size. The number of free blocks differs in accordance to the type of REU being used and how it is configured. The larger the capacity of the REU, the higher the number of free blocks are available. Ram-Process can remain installed in the REU for the complete period in which Geos is active. Should you, however, wish to reconfigure your disk then it will be necessary to remove RAM-Process from the REU (by running this programme again) before doing so.

RamPrinter works to all extent and puposes as any usual printer programme, with one exception: the files to be printed are 'printed' into the free blocks in the REU and not to the printer itself!

This need only a short time while the computer can't do anything else.

After all of the chosen files have been transfered to the REU, it is then possible to carry on working with the chosen application. It is also possible to end the work with the present application, to start a new application or open a new file whilst a printout is being made.

The information being sent from the REU to the printer will continue to be transfered and printed during the time in which the mouse is not moved, or a key is not touched.

It is also possible to prepare other documents in a completely different printing-style during the printout. During the time when the keys are being pressed or the mouse is in use, the printout slows down to enable the various tasks to be carried out.

It is also possible to enter the PrinterBuffer programme, during the time a printout is being carried out. This will enable changes to be made to the various parameter settings, which in turn will aid the REU to achieve a faster, or slower, soakup of data. This could have an influence on the number of printouts made, or enable the REU printer memory to be erased. As usual this is carried out in the normal Geos manner, i.e. with a mouse-click.

If you use a "geos cable", a parallel cable without any (unneeded!) serial interface for connect the printer, printer speed is faster. Also you can press key's without immidately printer stop while RamPrinter is active.

Clock V1.0

This separete clock programme will be anchored in the REU, with a double click on it's icon from the DeskTop, and allows the clock to be blended in to the top right hand corner of the screen. It can be seen from all applications, programmes and Desk Accessories and allows the time to be seen at all times. This mean you should set the correct time in the Desk-top.

This programme is PD software and can be obtained seperately and run together with RAM-Process without the need for the programme RAM-Printer to be present.

Programme Orders:

Wolfgang Pannes

Germany

Price: DM 14,80
plus DM 5.- for postage and packing.

Schnipp-Process

A new application for Ram-Process is "Schnipp-Process". After installing Ram-Process you can run Schnipp-Process. Now it is possible the copy the actual contense of the screen by pressing two keys !

With F1 the installed Process of "Schnipp" is activated. With the next key press - any key is possible - the Screen will written into a bitmap file. After this you will return to the started programme environment.

The bitmap can converted into a GeoPaint picture with the programme "Bitmap Converter". An older version of this is PD, the last Version 2.0 is published in the book "Mega Pack 1" from german Geos distributor Markt & Technik, Munich.

Because this programme is a "Process" application you can create the hardcopy any time you want it: some menu's are shown, or a dialogbox, you need a special picture from a any programme screen - no problem!

At this time Schnipp Process does **only** run under Geos 64 V2.0 ! A own version for Geos 128 will come later.

Schnipp-Process costs **10,- DM**. You can order this programme together with Ram-Print; the fee for postage and packing is only necessary once.

If you need the programme "Bitmap Converter", give Wolfgang Pannes an extra info and he will copy the PD Version, too.

Laser Service ...- continue from Page 8

Din 4, 5 or or Folls:

The Laser Service will print your work on to Din 4, Din 5, or even on Din 4 foiles. The foiles can then be use with a projector to project them on to walls or screens!

Dispatch Costs:

The dispatch costs from the Laser Service cover the postage for the usual suface mail at DM 3.- and takes 4-6 days. Airmail at DM 4.- takes about 3-4 days.

Payment:

The payment for the printing-work must be made at the time of the order being placed. Only cheques for the exact amount will be accepted.

More Information from:

Laser Service

Switzerland

Do you know what the Cassette Port should really be used for?

The Cassette-Port-Clock F83

With this clock module we take another step closer to the bigger PC with its built in clock programmes. A small device which with use will find a great deal of followers with Geos users. The CP Clock-Module F83 is small and as the name suggests, is run from the cassette-port of the Commodore Computer. The module works together with the Commodore C 64 and the Commodore C 128. The clock-module and its accompanying software are compatible to the German and the American Geos Kernel. The clock comes with instructions in either German or in the English language. All of the internal clock commands, situated in the menus, have also been translated into English. In fact you will find it very easy to use this very efficient piece of equipment.

This clock is a battery driven device, which means that it continues working, even after your computer has been switched off! The clocks functions include the time, date and the day of the week. Leapyears are also catered for. The correct year is automatically loaded by the computer, all relevant information is stored in the clock-memory. This means that at the change of each year the necessary alterations will automatically be carried out by the programme. The accompanying programme facilitates a change of year even up to four years later. Your computer may theoretically remain closed down for up to four years, after switching on again the correct time and date will be read in. A further advantage is the additional room in the

clock-housing for other planned alterations and enhancements (which at present are still at the drawingboard stage).

Included in the programme packet is the Cassette-Port Clock Module, a service programme-disk and a Users Manual which consists of four pages.

Important

The programmes for the clock on its accompanying disc will only work in conjunction with GEOS, from the version 1.3 upwards !!

The CP Clock-Module F83

First ensure the computer is switched off! The module is inserted into the cassette-port so that label is facing up, and the screws at the base of the module face down. Once you are sure that the module is connected properly you may once again switch on the computer. The CP-Clock F83 is now ready to be correctly adjusted before being put to use.

The Service Disc

The service disc contains two programmes which enable the CP-Clock-F83 to function in conjunction with the Geos DeskTop. One of the programmes is for the Commodore C 64, and the other is for the Commodore C 128, in the 40 and 80 character mode. The programme which is compatible with the user's requirements should be copied onto the Geos System Disc. The programme works together with Geos 64 & Geos 128, from the version 1.3 upwards.

The service programme should be positioned somewhere **behind** the programme **Configure**. After copying the necessary programme on to the Geos System Disk, keep the service-disk in a safe place.

The CP Clock-Programme

Initial access to the programme can be obtained by double clicking its icon from the Geos DeskTop. After loading, a list of options will appear, with the following menu-options:

Programme, Data swap and change data in CP-Clock.

Two clock faces will be seen, both working, although after being loaded for the first time, both showing different times, as well as the date.

The top clock will show the present time shown on the Geos clock, which is part of the DeskTop.

The clock underneath is the CP Clock F83. As well as these two clocks, the date and the day of the week will also be seen. Should, at a later stage, you not have connected the CP-Clock there will be a reminder in place of the date and the day, informing you that the module is not connected.

As the present Geos clock does not support the days of the week, the actual information will not appear on your Geos DeskTop, in spite of being entered into the clock-programme. The idea behind including the day of the week in the makeup of the clock is for use with future new desk accessories.

The time alters every second, first the top clock and then the bottom clock. This does not mean, however, that the top clock is running fast, but this is a necessary part of the programme which for technical reasons cannot be altered. A one or two second difference between the two clocks is also a necessary part of the technical make-up of the clock programme.

Time Accuracy

As with all clocks, this one is also not 100% accurate. There are various interference factors, which effect the movement of the quartz parts. For example; one of the main factors causing interference, is a change of the surrounding temperature. However, you may rest assured that this will not have much influence on the accuracy requirements for the general user. Even the degree of accuracy of the clocks in our modern PC's is not 100%.

Should at some stage the clock start to become very inaccurate, it is possible to adjust the time-keeping by trimming the quartz-movement, through adjusting the trim-condenser. To do this the clock-module must be removed from the computer (**the computer must first be switched off !**). All of the screws must be removed from the lid to the module housing, whilst removing the lid care is to be taken that the small printed circuits are not touched, it should now be possible to see the movement condenser, which is situated directly next to a small IC. If the two half-moon shaped plates are turned towards each other the clock movement will become slower, if the plates are moved away from each other the movement becomes faster. Adjustments may be made to the trimmer with a small screwdriver, but care is to be taken not to touch the other parts of the clock.

Aftermaking the necessary adjustments the clock can be carefully reassembled again. Reconnect the module and compare the time of the clock with the clock-programme, it is possible that the time and/or the date has been erased, from the clock memory. Should this be the case, enter in the necessary information as normal. About a week later recheck the accuracy of the time and where necessary make the alterations as already explained.

Of course it is easier to use the "change data" function in the CP-Clock programme. Directly changing time and date by this is safer and fast.

Please note: Should a load command inadvertently be used outside of a GEOS environment in which the command is aimed at the Cassette Port, and you have not removed your CP-Clock, the screen will change its colour and there will appear to have been a programme crash. To stop this just press the **RUN/STOP** key.

Price: DM 69.- plus DM 5.- for postage and packing.

CP Clock orders to:

Joerg Spross

Germany

Geos on Eprom Module

This must be a first in Europe, if not a Geos World sensation!! Geos on Eprom. Since May 1991 the Geos User Club (Germany) has been supplying a multitude of GUC members and other Geos Users with a new form of module. The module is called geoRom. The C64 Geos version is at present available on module directly from the GUC in Germany. Unfortunately the Geos 128 version seem to be NOT possible in next the time.

But what is Geos on Eprom exactly ? Geos on Eprom is a module containing the Geos *DeskTop* and *Bootsystem* (at present only in the C64 version) The module itself is connected to the Userport; thats at the back, on the right side of the C64.

The Eprom-housing is formed with a right angled adapter so that a RAM-Expansion Unit (REU) can be fitted into the top of the housing. The REU works even if the Eprom is **not** active! The housing also has room for possible updates. The Eprom can be switched on and off by means of a small toggle-switch.

GeoRom is fitted to the computer, before the computer is switched on, and the REU (if available) is pushed into it's recess in the housing. The Eprom should now be switched on first, after which the C64 can be switched on. In a matter of seconds the Geos programme in the Eprom is automatically loaded into the memory and is ready for use.

In principle thats about it, Geos still needs one more piece of information to be completely functional; the information about the drive setup which comes from the file "Configure". For one or two reasons this information can unfortunately not be included in the Eprom. The only information concerning the drives anchored in the Eprom is the information on the boot drive. At present a 1541 or a 1571 configured as a 1541 as drive A, "drive 8".

GeoRom now attempts to load the file configure from drive **A** (drive 8). During the boot process the configure programme is activated. If the relevant information is not to be found the Geos system is loaded with the standard configuration of one drive only.

The original boot disk is **not** necessary ! Only a normal work-disk with a copy of the Configure file is needed !

If this happens the necessary file concerning the other drives can be loaded manually later. If, during the boot process, other self-starting files are present on the disk, in drive "A", these will also be started immediately and in the usual order of loading.

At present it is not planned to have the 1581 drive on the Eprom as drive A (drive 8). It is possible to make this alteration, however, it would mean a great deal of work and far too many changes having to be made to the software and the Eprom alike. Anyone wishing to have the necessary work done, however, could apply in writing to the Geos User Club in Germany. The club address is included elsewhere in this magazine.

If geoRom is used in conjunction with a C128 and is reactivated after a reset, the Eprom automatically activates the C64 system and works from this point on in the Geos 64 40 character mode.

Using geoROM means: very fast booting by switching on the computer and very fast loading the Desktop, if needed. Further you you will have no problems with the copy protected original boot diskettes.

GeoRom costs **DM 89.-**, plus a further charge for postage and packing of DM 5.-

To get your version of Geos on Eprom the following instructions must be carried out:

1) Each person ordering **must** (!!) prove that he is in receipt of an original Geos 64 V2.0 BootDisk. He must send the original Backup SystemDisk. Without this disk no body will receive his copy of geoRom.

At this time geoROM does only work with the german Geos kernal !

*They are working to get the original american Geos 64 Version into the Eprom module. Until this is finished you can only order geoROM with a original **german** boot disk !*

2) Each person can only receive **one** geoRom module.

3) The necessary input driver must be installed on the Backup System Disk, as well the usual printer driver. These files will be "earmarked" in the geoRom programme and will be installed first, in order of loading, in their respective file groups. If at a later stage you no longer wish to use these files they can be swapped for other files of your choice.

The disk, from which the file configure will be loaded in drive A (drive 8) during the start process of geoRom, must include the input and printer drivers and they must be in the relevant loading place. GeoRom will then recognize the files and the order of loading and load them automatically during the start process.

4) Each order must be accompanied by a valid and signed order-check in German currency, i.e. in DM's. Orders without the original Backup Disk will not be accepted. Please give your exact address including postal code (or ZIP code).

The usual delivery time for a German customer is about six weeks, it is therefore wise to enquire in advance reference the delivery time. This time is needed because every geoROM module is "produced" alone.

GeoRom works together with other programmes, which have been programmed by members of the GUC, such as: **TopDesk**, **RamPrint** and also the **Cassette Port Clock** from Joerg Spross. There are reports of all of these programmes elsewhere in the GIG magazine.

All orders including the original (german) boot-disk are to be placed at the following address:

Wolfgang Pannes

Germany

The price is DM 89.- plus DM 5.- postage & packing.

Famous Last Words!

" I'll just run up a magazine for the GUC, it will only take about six weeks!!" Six Weeks, huh !!

It actually took me 3 months to get it finished. What with my family (God, the last time I saw my wife she was only years old, I wonder how old she is now?), as well as the translating, work, "yes, I do also work occasionally!" and as well trying to keep up with Dallas: What do you mean; it's gone off of the air? I hadn't noticed!

Seriously though, I hope this magazine has given you an insight into the GeosWorld in Germany and a reason to contact the GUC. A fairly large number of people speak English over here and there should not be many problems in finding someone to sort out your letters.

I trust that you found the reports and this magazine in general interesting enough to read completely, hopefully it didn't take you as long to read it as it took me to complete it!!

I have tried to include reports about all of the top programmes that have appeared over the past two years. I had to miss out a number of smaller programmes that are also very good and also could have had their place in this magazine, I'm afraid I just run out of space. So, if I have got your interest, then drop us a line. I would love to get some form of feedback from you readers, should there ever be any.

As a parting shot I will leave you my address once again:

Roy McIntosh

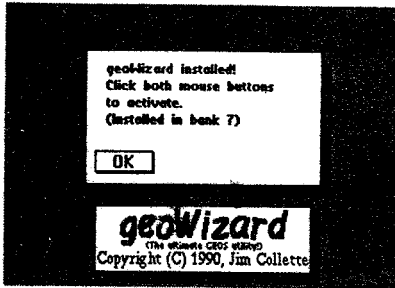
Germany

Further issue's of GIG are planned. But this means we must find a way to pay all costs for producing it.

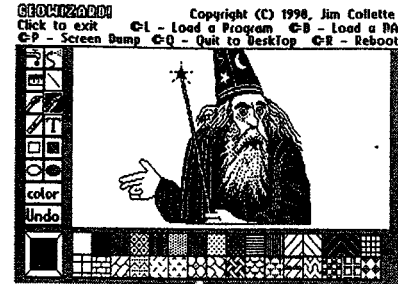
GEOS was introduced in 1986 and revolutionized the Commodore 64. It happened again in 1988 with GEOS 2.0. Now the 90's are here, and so is...



GEOWIZARD!



The program that pushes GEOS one step closer to the Mac...
GEOWIZARD! GEOWIZARD is a brand new utility for GEOS 64 2.0 and GEOS 128 2.0 owners with a RAM Expansion Unit (REU) - 17xx or GEORAM. Once GEOWIZARD is installed, it sits resident in the REU waiting for you to activate it. GEOWIZARD can be activated from almost anywhere. With a simple mouse click, GEOWIZARD temporarily takes over the computer and provides the following features:



- * Screen Dump (double-height option in 80 columns for proper aspect ratio) - *do screen dumps like those you see in geoWorld, of dialog boxes and menus!* Dump to printer, Photo Scrap, or directly to geoPaint without using Paint Drivers - full color support!
- * Return to deskTop (or in severe cases, RBOOT) - *get out of most System Error dialog boxes with no problem, with the RAM disk intact!*
- * *Start another application or desk accessory!* This is GEOWIZARD's most powerful option - almost like MultiFinder on the Mac! *Run almost any application as if it were a desk accessory (DA)! This will revolutionize your GEOS computing!!!*

When you're done with GEOWIZARD, the original program is restored as if nothing ever happened!

The last option is what makes GEOWIZARD truly special. Working in geoWrite and want to paste in a Photo Scrap but you forgot to cut it out of geoPaint? *No problem!* Pop up GEOWIZARD and run geoPaint, cut the scrap, then return to geoWrite where you left off! Need to run the Text Manager but the program you're in doesn't offer desk accessory support? Call up GEOWIZARD and run the DA! You can even run a DA from within a DA!

GEOWIZARD is something you have to see to believe. No longer do you have to quit a program to start something else! Great for time-consuming programs like geoPublish which take a long time to shut down and restart. Not multi-tasking but the closest thing GEOS has seen to it!

MiniDesk is a separate DA included with GEOWIZARD and goes hand-in-hand with it. MiniDesk is short for Mini DeskTop, and that's essentially what it is. Copy, Rename, or Scratch files from a DA! Can be used by itself as a normal desk accessory, or from GEOWIZARD - never again will you quit a program just to copy a file! MiniDesk will do the job in just a few seconds. Naturally, MiniDesk supports multiple file selection and 3 drives. Helps strip away the barrier to drive C - now you can move files to and from it whenever you like.

THE FINE PRINT: (IMPORTANT - PLEASE READ!)

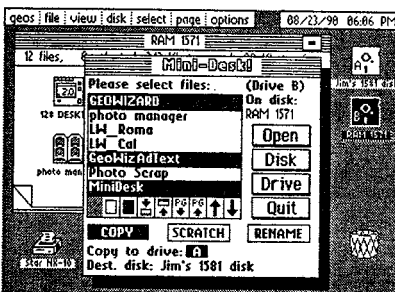
GEOWIZARD, MiniDesk, and geoWizDump fully support GEOS 128 in both 40 and 80 columns, and make use of three drives. GEOWIZARD is an Auto-Exec file and will install automatically on bootup if placed on your GEOS boot disk. GEOWIZARD is compatible with any input device.

You MUST have an REU with at least one 64K bank free. To determine if GEOWIZARD will work on your system, follow these steps:

- (1) Divide the size (in K) of your REU by 64, then subtract 1. (i.e. 128K = 1; 256K = 3; 512K = 7; 1024K = 15; 2048K = 31)
- (2) Subtract for each RAM or Shadowed disk you use: (*Shadowed Dir 1581 doesn't do much and can be removed for GEOWIZARD if you need the RAM*)
 RAM 1541/Shadowed 1541 - 3 RAM 1571 - 6 RAM 1581 - 13 Shadowed Dir 1581 - 1 (available in GEOS 64 2.0 only)
- (3) If you are left with a number greater than 0, GEOWIZARD will run on your system. Otherwise you need to remove a RAM disk (i.e. Shadowed Dir 1581).

In case you are lost, here is an example. Let's say you have a 1764, unexpanded - that's 256K. Divide 256 by 64 and you get 4, now subtract one - 3. Now subtract 3 for the RAM 1541 you use. That leaves 0, which means GEOWIZARD can't be used with only a 256K REU and a RAM 1541.

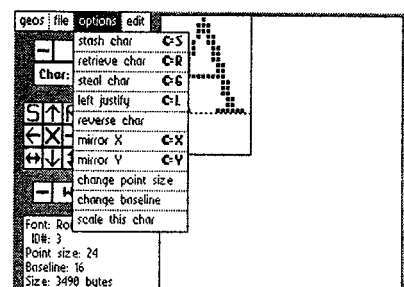
Before ordering, please follow the above steps and make sure you have enough RAM to use GEOWIZARD.



The GeoWizard disk is just sFr. 32.00 plus sFr. 3.00 (s&h) and includes GeoWizard, MiniDesk and GeoWizDump. This could be the bargain of a lifetime. To order, send a check or money order (in Swiss funds, drawn on a Swiss bank, payable to LaserService) to:

LaserService,

Switzerland



Remember that exciting feeling when you first used GEOS? When you first used a RAM disk? Prepare to experience that feeling all over again.... with GEOWIZARD!!! Don't be left behind - order today!!!