

geoVISION

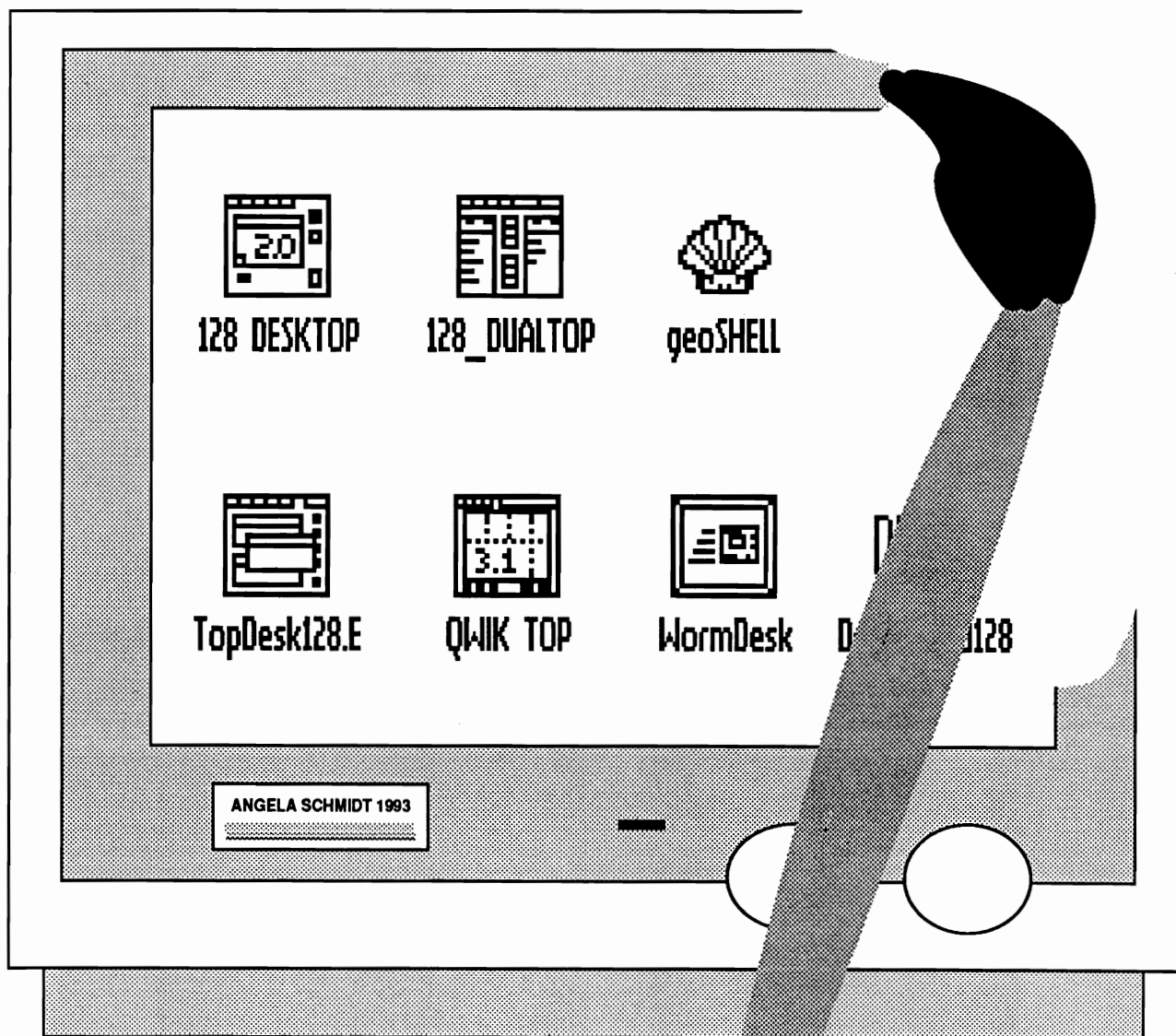
INTERNATIONAL™

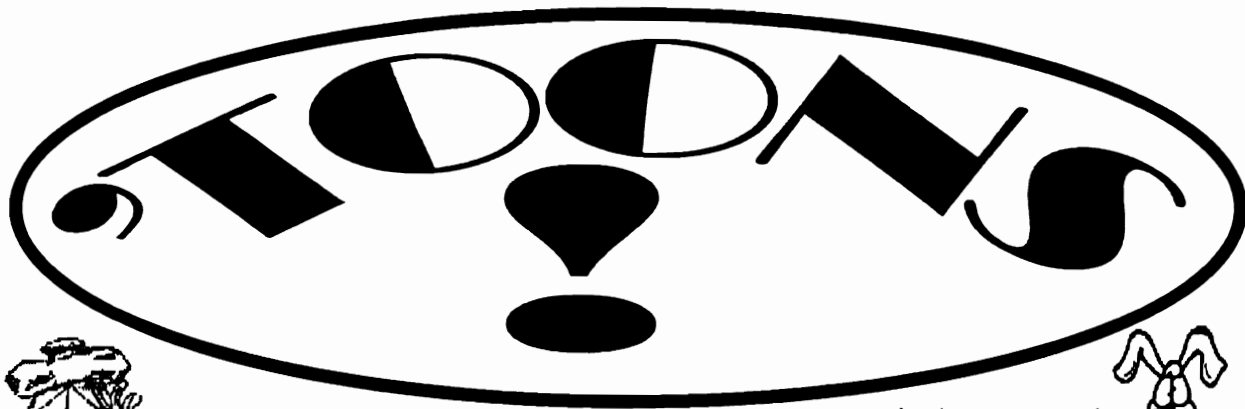


Volume 1, Number 2
\$4.00 U.S.

BRINGING THE WORLD TOGETHER WITH GEOS

March 1993
ISSN 1066-9876





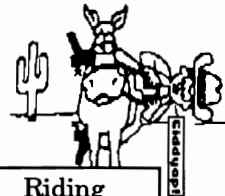
FROM
DISK #1



Bhudda-Pest!
From
Puntoons #1



From
TravelToons
Disk



Riding
Side Saddle!
From
Puntoons #2



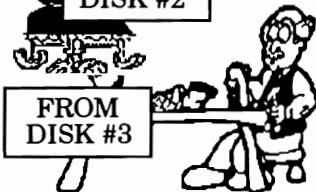
FROM
DISK #9



FROM
DISK #2



FROM
DISK #10



FROM
DISK #3



FROM
DISK #11



FROM
DISK #4

HUNDREDS

of cartoons,
all in Commodore GEOS format!
Each disk contains about 50 cartoons, plus
at least one GEOS font.
Great for newsletters, business,
or just plain fun.
And at \$10.00 a disk (\$12.00 outside the
U.S.) They're a great bargain!
So get one, or a couple, or get them all!



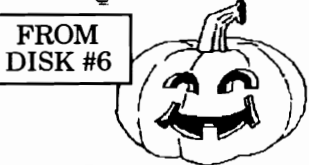
FROM
DISK #12



FROM
DISK #5



FROM
DISK #13



FROM
DISK #6



FROM
DISK #14



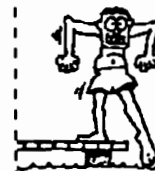
FROM
DISK #7



FROM
DISK #15



FROM
DISK #8



FROM
DISK #16

Please send me the following disks at \$10.00 each (\$12.00 outside the U.S.):

- | | | |
|--------------------------------------|-------------------------------------|-------------------------------------|
| <input type="checkbox"/> Disk #1 | <input type="checkbox"/> Disk #2 | <input type="checkbox"/> Disk #3 |
| <input type="checkbox"/> Disk #4 | <input type="checkbox"/> Disk #5 | <input type="checkbox"/> Disk #6 |
| <input type="checkbox"/> Disk #7 | <input type="checkbox"/> Disk #8 | <input type="checkbox"/> Disk #9 |
| <input type="checkbox"/> Disk #10 | <input type="checkbox"/> Disk #11 | <input type="checkbox"/> Disk #12 |
| <input type="checkbox"/> Disk #13 | <input type="checkbox"/> Disk #14 | <input type="checkbox"/> Disk #15 |
| <input type="checkbox"/> Disk #16 | <input type="checkbox"/> Puntoonz 1 | <input type="checkbox"/> Puntoonz 2 |
| <input type="checkbox"/> Traveltoons | | |

TOTAL: _____

Name _____

Address _____

City _____ State _____ Zip _____

Send to:
CARTOON SAMPLER
7048 Michigan Street
Elwell, MI 48832

PUBLISHER/MANAGING EDITOR
Grady E. Brown

THE ART GALLERY EDITOR
Mrs. Jane M. Voskamp - Jones

NEW USERS EDITOR
Robert Hunter

CONTRIBUTING AUTHORS
A. J. Schmidt
Ken Nakatsu

COVER ARTIST
Angela Schmidt

geoVISION International is an independent bi-monthly publication serving GEOS users and programmers with the best and latest information available.

SUBSCRIPTIONS
(One Year/Six Issues - In U.S. Funds)
United States \$21. Canada, Mexico and Int'l Surface Mail \$27. Int'l Air Mail \$33.

The views expressed in geoVISION International are those of the individual writers and do not necessarily reflect the views of geoVISION International, its staff, or advertisers. The acceptance of an ad does not necessarily constitute an endorsement of a product. geoVISION International reserves the right to determine the acceptability of any articles or advertising submitted.

geoVISION International is a Trademark of Grady E. Brown and is no way affiliated with Commodore Business Machines, Berkeley Softworks, or GeoWorks. CBM, Commodore and associated logos are Registered Trademarks of Commodore Business Machines, Inc., GEOS, GeoPaint, GeoWrite, GeoPublish, GeoCalc, GeoDex, GeoFile, GeoChart, DeskTop, GeoRAM, BSW and associated logos are Registered Trademarks of GeoWorks.

No part of this publication may be reprinted or reproduced in any form without written permission from the publisher. Printed in the U.S.A. ISSN 1066-9876.

geoVISION International
816 S.E. Polk Street
Camas, Washington 98607-2240

Copyright 1993, geoVISION International

March 1993

geoVISION™
INTERNATIONAL
BRINGING THE WORLD TOGETHER WITH GEOS

Inside This Issue

Features

- 6 A New Horizon With DualTop V3.0 by Ken Nakatsu
- 11 geoSHELL - A New Hatchling by A.J. Schmidt
- 15 The gateWay - Taking You to New Heights by Grady E. Brown
- 24 TopDesk - From The TopDog - Dweezil by Grady E. Brown
- 27 QWIK TOP / WormDesk - YES! There's More by Grady E. Brown

Columns

- 10 TELECOMMUNICATIONS - Network News - Q-Link and GENie by Grady E. Brown
- 14 NEW USERS - King of File Movers - Using DeskTop as a File Manager by Bob Hunter
- 20 THE ART GALLERY - GeoPaint Revealed - Part One - The Menus by Jane M. Voskamp-Jones

Departments

- 4 EDITORIAL
- 5 LETTERS
- 23 NEWS
- 28 USER GROUPS - BBS's - PUBLICATIONS
- 30 CLASSIFIEDS

CORRESPONDENCE & ARTICLES FOR CONSIDERATION

We always welcome and encourage your contributions. Please ask for our Writer's Packet. Submissions for publication should be sent on disk with hardcopy. By submitting material, you grant gVI First Serial Rights and Second Reprint Rights, and agree not to submit this material to other publications for a period of six months. Advertising information can be found elsewhere in this issue.

Desktop Bonanza

by Grady E. Brown

There is an old song I remember some words to. They are 'May the circle be unbroken', which is what I wish for you and geoVISION International. You support gVI by subscribing, and geoVISION International supports you, the subscribers with wanted and needed material. It is an unending circle that cannot afford to become weak at any point. By this I mean that without you, geoVISION International would not exist. So, gVI is here for you.

Over the last two months I've received many subscriptions and letters telling me what it is you'd like to see and read in geoVISION International. Thank you all. I'll be working on implementing many of your suggestions in this and future issues. Keep your letters coming.

This issue of geoVISION International is about desktops. Which one is for you? There is a review (or overview) of all the major desktop alternatives except the GEOS DeskTop. I felt that everyone starts out with this one, and the New Users editor, Robert Hunter, covers it to some extent. I hope that this in-depth look into the various desktops will give you a better understanding of what there is, and what may be best for your particular situation.

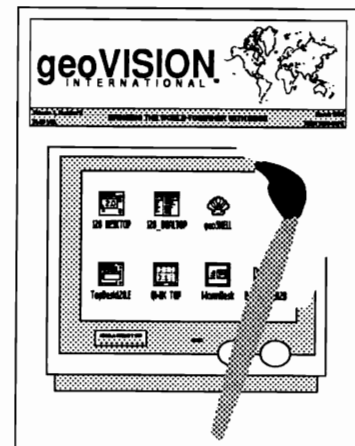
I'd like you to also know gVI can now be reached via modem. You can contact us on Q-Link and/or GENie under the name of 'GeoVISION'. I am currently checking into the feasibility of a BBS that would carry geoVISION International information and files. I'll let you know what happens with this idea. I don't know if you'd really have an interest in calling long distance to contact us, to upload something to us, or to download something from us. It may be handy for those submitting material for publication.

I've also had many people ask about the geoVISION International disks. Why don't we mail them out with each issue? And, why don't we mention what is on each disk in the magazine? Well, the disk isn't put together until the last minute before shipping to assure that the files are as up-to-date as possible. It would be too late to include it in each issue. We could list the past disks contents if there is enough calling for it. We decided to mail the disks during the 'off' month from the magazine, to give you something to look forward to during the time you'd be waiting for the next magazine. I remember how it was to wait for the next issue of RUN magazine. I don't have much patience.

What I'd like to know from all of you is, would you prefer to have each disk mailed the same month as the magazine? With, or in the magazine somehow? If so, would you like to see each disk's contents listed in each issue the same month the magazine comes out? I'd really like to hear your opinions, pro and con, to all those questions. If enough of you would like to see a change made in this regard, I'd try my best to accommodate your wishes.

I'd like to announce that Mrs. Jane M. Voskamp-Jones of South Australia is now THE ART GALLERY editor. Welcome to geoVISION International. Her expertise in graphic arts and in the use of GeoPublish and GeoPaint as well as her Australian insight should give you quite a bit of knowledge in this area. Thank you, Jane, for joining us.

It has been an enjoyable and enlightening experience to work with all these alternative and replacement desktops. With so many to choose from now, you're



sure to find one to your liking. Each in their own way is more powerful than the other. Each programmer had a different goal in mind when writing them, and that goal may match what you're looking for in a desktop. Check them out.

In the May issue, we'll be discussing RAM expansion. From Commodore's REU's to Creative Micro Design's RAMLink and Performance Peripheral Inc.'s BBG. Now that we've learned the C128's 64VDC can be accessed with GEOS, we'll bring you a little about that too.

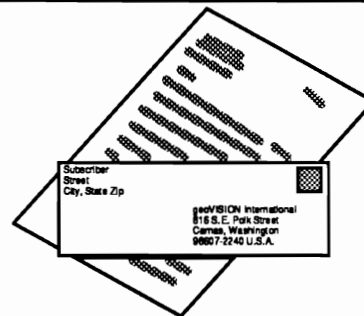
Coming up in the July issue, you'll learn more about laser printing. How to do it with your own printer, or with someone else's. Now everyone can laser print their GEOS documents the way they were intended to be printed. Remember when Berkeley SoftWorks first brought GEOS out? Their advertising showed great looking laser printed flyers and newsletters. They sold the GeoCable as an interface to certain laser printers. That's what BSW wanted for GEOS. With the July issue you'll learn how easy it is to do it yourself.

Keep your letters with comments, suggestions, and criticisms coming in. This is what is needed, to know if you're getting what you need out of geoVISION International. Keep gVI informed and we'll keep YOU informed. □

Your Words & Thoughts

Questions, Answers, Suggestions & Ideas

by YOU



REU Expansion...

I have written to Melvin Montgomery of Plano, TX U.S.A. about expanding both my REU's beyond 512K but to date have had no reply. Could any of your readers advise me as to whether Melvin is extending this service to overseas customers?

Also, what is the situation regarding REU's beyond 1 Meg. I have heard somewhere that some MMU chips in C128 or C128D's have had some problems with expansion out to 2 Meg.

Would other programs that utilize the REU's, such as The Write Stuff, RAMDOS, Spectrum 128, BASIC 8, etc. encounter problems with expanded REU's? I hope some readers can help with this. Thank you.

-Mrs. Jane M. Jones / South Australia

[EDITOR] Well, how about it folks. Can anyone help her out on this one? I know Melvin Montgomery did REU expansions at one time, but haven't heard if he is still doing this. I have contacted Raymond Day and he tells me he still does upgrades. He will also take orders from overseas for additional postage. We'll have new ordering information for Rays upgrades in the May 'RAM Expansion' issue. With the entry of Creative Micro Design's RAMLink, RAMCard, and RAMDrive, as well as Performance Peripherals, Inc.'s BBG RAM, there doesn't seem to be much call for upgrading the Commodore REU's these days. Their costs are coming down too, making a better deal to buy the commercial products than to upgrade.

GEOS Reference Books

I have a big problem and I hope you are able to help me. I like programming very much and there are some things I get stuck

with when I'm writing GEOAssembler. All over in the GEOProgrammer manual they refer to "The Official GEOS Programmers Reference Guide" and I think that book never has been in Sweden. I would like to know where and how I can get one. New or used doesn't matter, I just need it.

-PeO Grenholm / Kumla, Sweden

[EDITOR] I'm sorry to tell you that BANTAM Books no longer sells "The Official GEOS Programmers Reference Guide". It has been out of print for a couple years. The only way to obtain copies now, is to rummage through used book stores and keep an eye out for people selling their computer systems and libraries. --> Take a look in the CLASSIFIEDS column for one copy that

is for sale by yours truly.

Also, if you're into programming, you shouldn't be without "The Hitchhiker's Guide to GEOS" by GeoWorks. It is only photocopies of the manuscript before it went to a printer and is sold as just that. It is not bound and does have a couple pages missing, but it is much more in depth than the above 'Guide'. It can be obtained from GeoWorks Inc. directly for \$20.00 plus \$5.00 postage. GeoWorks, Inc.; 2150 Shattuck Avenue; Berkeley, CA 94704. For more information on all their available products call this number from a touch tone phone. (510) 644-0883 This is a 24 hour number, but for actual Commodore GEOS orders or info you must call on Tuesday or Thursday from 9:30am through 12:30pm Pacific Time. □

PRODUCTION TOOLS

geoVISION International is proudly produced on a Commodore 128 with upgraded ROMS and 64K Video Display Memory, a 512K Commodore 1764 REU, two Commodore 1581 (3 1/2") drives, and one Commodore 1541 (5 1/4") drive. A Panasonic KX-P1091i printer is used for pre-proofing pages. Final proofing is done on an Apple LaserWriterPlus laser printer.

TEXT EDITING

All text is submitted either on disk or via modem and converted to GeoWrite 128 v2.1. Text is then proofed and imported into GeoPublish v1.0b for further editing.

LAYOUT & DESIGN

geoVISION International's design and layout is done using GeoPublish v1.0b.

TYPOGRAPHY

Every issue uses LW Cal (Helvetica), LW Cowell (Palatino-Roman), LW Zapf (Zapf-Chancery), and LW Shattuck (Zapf-Dingbats), all from GeoWorks, Inc.

OUTPUT

Except for certain ad material, finished pages are printed to disk using a patched version of GeoPubLaser v1.8 and copied to an MS-DOS formatted disk using Big Blue Reader 128 v4.01. The pages are then printed on an Apple LaserwriterPlus through a Gateway 2000 4DX-33 for masters. Plates of the masters are then created and offset printed by LAZERQUICK #22, 1410 Main Street Vancouver, WA 98663. □

A New Horizon With DualTop V3.0

by Ken Nakatsu

"In this business you either lead, follow, or get out of the way." It is a message spoken in a recent Chrysler automobile commercial. It is also the message I got from examining Paul B. Murdaugh's latest effort Dual Top 3.0. With this program, Paul has convinced me that he wishes to lead the way.

Dual Top 3.0 is an alternative system controller to DeskTop 2.0. They differ not so much in what they do, but how they do it. Upon opening Dual Top you will immediately notice the difference between its appearance and DeskTop's appearance.

Dual Top does not display files graphically (with Icons). If that is what you love about GEOS's DeskTop you may not like Dual Top. However, aside from its lack of Icons I find little not to like about Dual Top 3.0.

Dual Top displays two windows, (destination and source). This is why it can list two directories simultaneously, hence the name Dual Top. In between these windows are a pair of boxes stacked one above the other. The top box is the drive box. Its buttons display the drives by type (1541, 71, 81, Ram, Shadow, etc) and designation (A, B, C and D). Yes, I said "D" and you'll find that Dual Top 3.0 does indeed support four devices. The lower box displays function buttons for file mangement. The top button selects (A)ll files or (C)lears all selected files in the source window. The other functions (info, copy, print, rename, and delete) can be found, with others, in the drop down file menu at the top left of the screen as well. However, having the file commands, which are in the lower box on constant display, is quite convenient.

Each of the displayed directories are accompanied by two easily distinguishable bars. One is a fuel gauge, a visual representation of the disk space occupied with respect to the disk's storage capacity. The second bar represents the files on the disk. A slider bar within it shows the area of files being viewed with respect to the number of files on the disk and how it is sorted. Numerical read outs show precise readings on the current state of the disk space and the number of files on the disk. This information appears just above the gauges.

**DUAL TOP 3.0 HAS
RAM DRIVE PRIORITY
SUPPORTS 4 DRIVES
AND USES THE
128'S 64K VDC**

The Critique

In it's documentation Dual Top proclaims that it was developed with four goals in mind. These goals are Speed, Power, Flexibility and Expandability. Having spelled out its own objectives, I decided to use them as a guide line for this review.

Speed

First the quality of Speed. Dual Top claims to have the fastest copy, the fastest validate, the fastest startup time, the fastest scrolls and the fastest directories in the GEOS world. A very strong claim indeed. I did find Dual Top 3.0 to be a fast system system controller to work with, but not necessarily for the reasons given us for being speedy. I

cannot verify these claims because I do not have every GEOS system controller in existence. I did time the copy, validate, format, etc. routines against that of the DeskTop and the functions that were measurably faster than DeskTop 2.0 were the directory scroll, startup (for 128 users with 64k Video Ram), and file deleting. The program's ability to copy files, validate disks, format disks, etc. all seemed to take approximately the same amount of time.

The importance of speed alone can be over emphasized however. For example, having the fastest scroll means nothing if a directory scrolls so fast that you can't read it or have no control over where you wind up once you stop scrolling (fortunately Dual Top has a reasonable scroll rate).

More impressive to me than the raw speed of performing a copy or validating a disk were the creative speed gains. Places where speed was achieved through finesse. Also of importance were funtions that simply saved time. Isn't saving time what we're really after? Making a piece of hardware work faster is only one way to save time.

Here's what I found:

Dual Top uses something it calls "Ram Drive Priority". What this does is to check the Ram Drive of a system for a data file's parent application before it loads it from another drive. For example, say a user wishes to view a geoPaint file. When he double clicks on the paint file Dual Top's "Ram Drive Priority" will look for geoPAINT in the Ram Drive first. If it is there it will load it from Ram instead of a drive. Naturally any application in Ram will load much faster than from a drive. This is a much more creative way to gain speed than simply trying to find one more way to force a disk drive to load a file faster.

For 128 users with 64k Video Ram, Dual Top has a mode that utilizes the upper VDC memory to store the screen. Thus, Dual Top can instantly draw its screen

when you go back to it. A creative use of computer memory. I hope we see more programmers make use of VDC memory. This is an untapped gold mine!

Other time savers utilizing finesse are the ability to abort multiple copies, and something called auto overwrite.

Ever engage the DeskTop in copying multiple files only to change your mind, because you didn't need to, because you were copying to the wrong disk, or you find you're copying older files over newer ones, or for some other reason? And naturally, you changed your mind right after you've started the copying process. Now you find yourself twiddling your thumbs, picking at your nails or strumming your fingers on the desk because you have to wait for DeskTop to finish the copying. What a waste of time. Well, not with Dual Top, because you can abort the process!

Ever want to copy updated files to a disk, many sharing the same file names, without having to constantly approve them being overwritten? What a waste of time. With Dual Top's auto overwrite you can choose to by pass the overwrite box for these occassions and re-engage it when your finished. This way you won't accidentally overwrite a file later.

Dual Top also has keyboard shortcuts for more funtions than you can shake a stick at. Keyboard shortcuts are quicker than using the menus when committed to memory. It is these kinds of finesse and creative programing techniques that really makes Dual Top 3.0 outshine all the others!

Power

Dual Top claims it has power because of its Ram Drive Priority and complete set of file and disk functions.

What impressed me most about the power of Ram Drive Priority is the type of power it represents. It represents power in a program from writing the software to make "better use of available hardware". Dual Top has attained this kind of power in three areas.

First Ram Drive Priority makes "better use of available hardware" by checking to see if it can load a parent program from the Ram before it loads it from a disk drive, thus speeding up the loading time. Before "Ram Drive Priority" a parent program would be loaded from what ever drive you happen to be in at the time.

Second Dual Top's 64k VDC mode also makes "better use of available hardware" by allowing its 128 64k Video Ram users to take advantage of VDC memory. Frankly, I don't know how it loaded the startup screen before, but engaging this option improves the speed of returning to Dual Top even when it's in the Ram Drive. The speed at which the screen comes up with Dual Top 3.0 in the Ram and this mode engaged is impressive.

And Third, Dual Top's four drive support makes "better use of available hardware" by allowing access to an extra device where only three could be accessed before. Naturally you need a fourth drive to take advantage of this one.

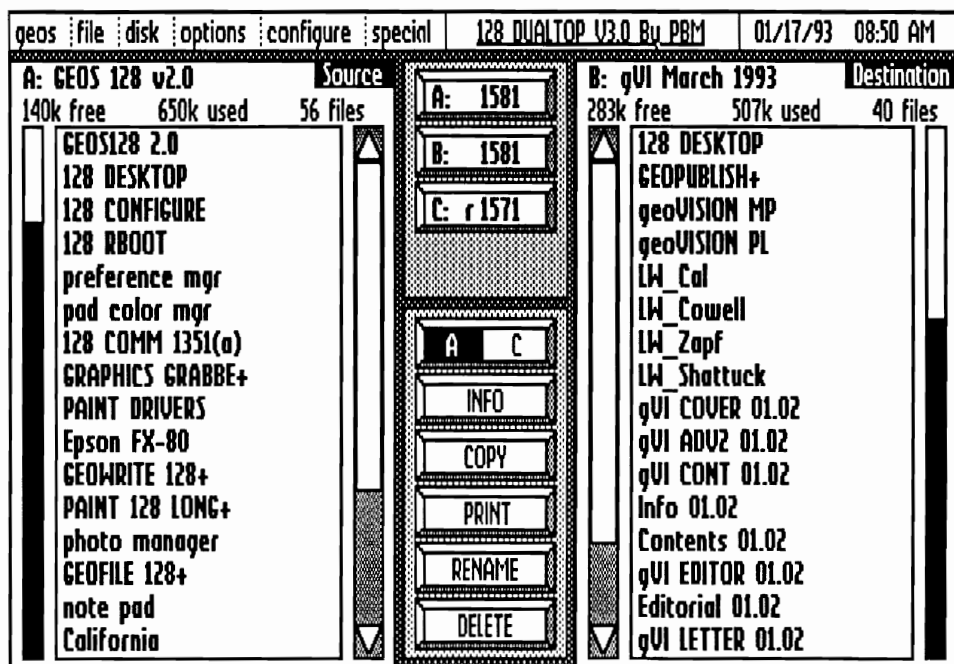
The enhanced file and disk management menus are a welcome change to an area where Dual Top was sorely lacking. New disk commands include sort, copy and validate. New file commands include open, duplicate and swap.

Flexibility

Dual Top claims flexibility because it can support a forth drive, because its program flow can be controlled by user options, and because every function has a keyboard short cut.

True Dual Top does support a forth drive if one is available to be configured and technically that does make Dual Top more flexible. However, in order to get a better feel of how well Dual Top is programmed I will concentrate on Dual Top's flexibility in areas where making better use of available hardware doesn't count. This will also cut down on the overlapping qualities of some of the features already discussed.

In the user options menu Dual Top has it over the DeskTop on two counts. You can disable or enable the overwrite box and (for 128 owners) you can disable or enable the 40/80 column approval box. DeskTop does not give you the flexibility to disable these functions but the rest can be matched one way or another with the exception of being able to enable 64k video mode.



However, that option comes from making better use of available hardware and to include it would be breaking my own rule.

Dual Top is also more flexible than DeskTop when it comes to keyboard shortcuts. Dual Top has the most extensive use of keyboard shortcuts I have seen and there is also a list of the short cuts that doesn't appear in the menus. The list of these shortcuts is located in the "special" menu. So much for the shortcuts not appearing in the menus not appearing in the menu (No, that's not an echo).

Yet another flexibility worth mentioning is the Scrolling. Scrolling the directory list can be done in four different manners.

One. You can smooth scroll one file after another by holding down the left mouse button on the scroll arrow (up or down) in the direction you want to scroll the list. Or, you can click and move one by one up or down the list.

Two. You can page scroll using the keyboard cursor keys or clicking between the slider bar and the scroll arrow pointing the direction that scrolling is desired. Scrolling in this manner will page up or down the directory list 15 files at a time.

Three. You can move to any part of the directory you wish by dragging the slider bar to the part of the directory list you wish to examine. This feature is most useful when you have a large directory and know the approximate location of the file you are looking for.

Four. Using the left arrow and right arrow cursor keys you can jump right to the top (left arrow) or bottom (right arrow) of the directory list. 128 users can do this using either set of cursor keys.

As flexible as Dual Top is, there is one area where DeskTop has the edge. It is DeskTop's ability to view files by size, type, and date. Dual Top does not allow files to be viewed in this way. Perhaps, we'll see a module come out which allows for this in the future.

Expandability

Dual Top has provided room for ten module expansions (though none are available at this time). This a splendid feature, one that will allow Dual Top to grow even if we never see a new release. This addition alone puts Dual Top 3.0 in a class by itself.

Improvements

How has Dual Top 3.0 improved over version 2.0? Incredibly! Many of these have already come up. Ram Drive Priority, a 64k Video mode (for 128 users with 64k VDC), four drive support, and modular expansion are all features Dual Top 2.0 did not have. Other improvements that came up were an extensive array of keyboard shortcuts (Dual Top 2.0 lacked a complete set), auto overwrite (the ability to toggle the overwrite box) and auto video adjust (the ability to toggle the 40/80 column approval box for 128 users). These boxes were permanently disabled in Dual Top 2.0. More directory scroll functions (The smooth scroll and scrolling with cursor keys weren't available before.), and an enhanced set of file commands and disk commands have been mentioned as well.

Improvements that haven't come up include an improved error box that is actually useful, (It tells you in english what error has occurred. I always hated that stupid error has occurred near "some hexadecimal #" error message), an improved clock display (it now displays the date and whether it's AM or PM), and the overall appearance of Dual Top (in my opinion) has been improved. Its screen has been changed to appear less busy without loss of information. In fact, a new piece of information has been added and that is the number of files in the directory.

Shortcomings

Of course there are shortcomings. There are shortcomings to every program. It can't serve breakfast in bed is a shortcoming. Although, relative to

DeskTop I see only two shortcomings.

The first is one I brought up earlier, and that is Dual Top's inability to view files by size, type and date. However, this could be remedied with a module and that is the beauty of Dual Top 3.0. It's modular capability gives it a way to eliminate such shortcomings.

The other shortcoming occurs when a fourth drive is configured. The shortcoming is that you can't perform drive swapping with a fourth configured. Whether or not I am being fair calling this a shortcoming is arguable when you consider DeskTop doesn't allow a 4th drive to be configured in the first place. The reason it strikes me as a shortcoming is that when you configure the fourth drive you cannot continue to reconfigure at least the first 3 drives so you have lost an ability that was there before. The paradox is that if you don't configure a fourth drive this is no longer a shortcoming. So is it or isn't it a shortcoming?

Conclusion

In the pre-geoVISION International era I did a review of Dual Top 2.0. I was impressed with Dual Top then, but not enough to recommend it as an alternative to Desk Top 2.0. Instead, I recommended that it be used to supplement DeskTop, because though Dual Top 2.0 had many strengths it also had weaknesses that were too big to ignore. Dual Top 2.0 showed a lot of potential and Dual Top 3.0 has realized that potential.

Dual Top 3.0 has improved so much over its predecessor that I can now recommend it and do recommend it as a full fledged alternative to DeskTop 2.0. If you liked Dual Top 2.0, you're going to love Dual Top 3.0 and if you're a die hard DeskTop fan you should at least consider the advantages of Dual Top 3.0. Its list of pluses over the DeskTop has increased to a degree that cannot be ignored. □

[EDITOR] Ken Nakatsu is our resident review columnist and hardware hacker. In his full time he's SYSOP of a local BBS.

The Landmark Series

The Landmark Series is a set of ground breaking applications for GEOS. Experience the power of Dual Top's four drive support, the full color excitement of Tet, Solitaire, Checkerboard and the incredible picture displays made possible only by Lace II.

Dual Top V3.0

The Premier Desk Top Replacement for GEOS!

Realize the full potential of your GEOS system with this powerful Desk Top replacement. Dual Top breaks the two drive barrier by giving you full access to all four drives. Never again will you have to swap drives just to use the files located in drive C. To take full advantage of your REU, Dual Top utilizes a RAM Drive Priority System that insures that you will get the maximum benefit from your RAM drives. Have you ever validated a disk that is full of files only to find out that there was an error? What do you do now? The error description was anything but helpful in locating the file that contained the error. With Dual Top, you get a full error report in plain English that will allow you to immediately take care of the problem file. Dual Top compliments its power with high speed disk and file functions that are activated by an intuitive user interface. Dual Top is compatible with the BSW Desk Top and with GateWay. Dual Top can be run from both the BSW Desk Top and GateWay. You can also run the BSW Desk Top and GateWay from Dual Top by double clicking on its file name just like any other application. 40 and 80 column versions are included.

Tet

Need a break? Relax with a game of Tet and enjoy this full color game of logic and skill. Be careful - you may not be able to play just one game! 40 and 80 column versions are included.

Solitaire

Choose your deck and try your hand at this full color version of America's favorite card game! 40 and 80 column versions are included.

Checkerboard

Play an old fashioned game of checkers with a friend. Checkerboard is as close to the real thing as you can get - without the lost checkers. 40 column mode only.

Lace II

GeoPaint pictures the way Mother Nature intended!

Display your GeoPaint pictures in resolutions up to 640x598 in full color! Lace II can also display IPaint and Basic8 picture formats. Whether you are creating GeoPaint pictures or you just enjoy looking at computer graphics, this application is a must for you. 80 column mode only.

System Requirements: The Landmark Series requires GEOS V2.0 (128 or 64). 64 Dual Top requires an REU for multiple drive types. 64 and 128 Dual Top require an REU for four drive support. Lace II and the 80 column versions of Tet and Solitaire require 64K of VDC RAM.

To order, mail this form or call 1 (417) 863-6709 for COD orders.

Yes! Send me The Landmark Series right away!

I have enclosed a check or money order for \$24.95 + \$3.00 S/H.

Please send The Landmark Series to the address below.

Name _____

Address _____

City, State, Zip _____

Mail your order to:

The Landmark Series
New Horizon Software
2253 N Kansas Ave
Springfield, MO 65803

COD orders and orders outside of the USA please add \$4.00 per order.

CompuServe	C= C
GEnie	C= G
Q-Link	C= Q
Delphi	C= D
Other	C= O

Network News

Q-Link and GEnie

by Grady E. Brown

Last issue we discussed the various networks available with Commodore and GEOS support. Today I'll try to tell you a bit about what is currently going on with three of them. All three are really buzzing with activity, each in their own way.

Q-Link has been struggling with many rumors being spread by the users, that it is going under and will close soon. These rumors cannot be verified and have been heard for a few years now, so I take it as the grumblings of just those users that get upset when their mail doesn't get answered quick enough or the libraries don't get updated fast enough. The rumors seem to spread before the first word comes back from the management of what the trouble really is.

There have been two problems with Q-Link lately. One is an access problem with SprintNet (formerly known as TeleNet). Although this is the preferred access, since it has cleaner lines and doesn't lock up during downloads like TymNet has been known to do, it is now best to use TymNet. If you have one in your area. The problem is while waiting for network connection, you get a "Refused Collect Connection" error message at the bottom of the screen. It seems that this has been occurring all over the United States.

To educate you on what this is all about, let me quote a message from GEOREP JIM (Jim Collette) regarding "About Sign-on Problems". "Whenever we call on a SprintNet node, Q-Link is paying SprintNet for the use of its service - since we're calling Q (over SprintNet) and Q is paying, it's a collect connection. There are thousands of computers (hosts) on SprintNet - many of them will not accept

collect connections (because it costs them money) - you need a SprintNet ID (usually gotten with a PC-Pursuit account) to make the connection, and that way it gets billed to YOU, rather than the computer you're calling. Q-Link normally pays SprintNet with part of the money it collects from us for the hourly fee. (while we're in basic service, Q-Link is losing money, because it's still paying SprintNet for the connection.)

This seems to just be a glitch on Q-Link's end (or in SprintNet itself) where SprintNet is somehow getting the idea that Q-Link won't take the collect connections.

And also, I too have been noticing lots of problems on America Online lately too... getting dumped off a fair amount, and downloads are slower than molasses. -Jim :)"

Have you noticed that with GEnie, DELPHI, and CompuServe have an additional network access charge for some telephone numbers? This is because they do not pay for your telephone call.

The other problem has been corrected. It was that none of the software libraries were getting updated. People were uploading files but the files weren't being processed (made 'live') and placed in the download libraries. It was over two months in a couple libraries. That has all been taken care of and the new files are there and ready for downloading.

While all this was going on, the message bases and the GEOS Chat Room were quite busy with great answers being given to messages asking for help, and informative topics being bandied about in the chat room.

If you have left because of these listed problems, you might want to go back and give it another try. Even with the past trouble, I think Q-Link is still the best bet for GEOS information and files. There are no commands to remember and it's all handled by menus making it pretty much self explanatory to use.

GEnie is a bustling metropolis these days too. Quite a few people have left Q-Link and ventured over to this network to find a completely different world. With GEnie you are able to use whatever terminal program you feel most comfortable with. It is highly recommended you find one that has a good sizeable buffer like DesTerm, Dialogue, or GEnie's own Wizard. You're no longer tied down to just 300 or 1200 baud speeds. GEnie offers access from 300 to 9600 baud, although at 9600 there is an additional charge.

Speed is the one thing I like best about GEnie. I have just upgraded from a 1200 baud modem, to 2400. It may not be 9600 but it's fast enough to keep me happy. The other is size. There are so many areas packed with information, and supporting just about every computer system, that at times it seems quite overwhelming. Don't let it get to you, relax and explore. I'll take some time to get used to compared to Q-Link. Like Q, there are many good GEOS topics in the message bases under The GEOS 64/128 Information Exchange category of the CBM Roundtable Bulletin Board. There are three GEOS download libraries. The GEOS Workstation and two GEOS art areas. One of which is for adults only. E-Mail on GEnie is free under your basic monthly fee, and the CBM GEOS areas all cost extra. \$6.00 per hour extra. And, don't forget the \$2.00 per hour nextwork surcharge that you have with some access numbers. That's extra too. ☐



- Background Color
- Shell Color
- Text Color
- Pad Color
- Border Color
- Exit

geoSHELL

A New Pearl for GEOS

by A.J. Schmidt

A 'Command Line Interface' for use with GEOS is a reality. geoSHELL, by Maurice Randall, is the only CLI used exclusively with the 64 or 128 GEOS operating system. For those of you unfamiliar with the term Command Line Interface/CLI, it is a text based operating system much like the DOS CLI for IBM and the SHELL for AMIGA. By typing in a command line; one or more commands, such as *run* the filename and hitting the RETURN geoSHELL will load and run the file; no more paging through the DeskTop or clicking on icons to open a file. geoSHELL itself consists of thirteen files and takes up about 46K of space on a disk.

UNIQUE LOOK

geoSHELL's look and feel is unique to GEOS. It appears on the screen as a raised window on a pattern (one of 32, which can be chosen with the geoSHELL command *backpatt* and the appropriate number 0-31); inside the window is a white background with text. For a better idea of what I'm trying to describe, see the screen dump at the end of this article. If you're using geoSHELL with a 128 you can change the colors that are displayed (it boots in black and white) using the command *color80* will produce the preferences screen that appears at the beginning of this article. With this screen you can change the colors of the background, shell, and the text area to suit your personal tastes.

geoSHELL BOOTS

geoSHELL V2.0
 Copyright 1992 by Maurice Randall
 A>

The previous lines are what appear when geoSHELL boots, title, version number and

copyright notice. When you run geoSHELL's *directory* command you'll see device and application displayed like this:

```
A: 1581          GEOS 128  v2.0
And a listing of the current directory [drive] contents. Again, check out the screen dump at the end of this article for a look at what you'll see.
```

Speaking of booting, geoSHELL is an auto-exec file and can be used on a boot disk. Randall cautions in the manual that you should make geoSHELL the last auto-exec file on your boot disk, since geoSHELL, once loaded, won't look for additional auto-execs. geoSHELL can also use startup files you create using GeoWrite. These startups can be different for each disk, depending on its use and your needs. One of the uses for a startup file would be to define your Function Keys, if geoSHELL's default definitions aren't suited to your purpose. If you put geoSHELL on a boot disk you might want to include a startup file that would include commands to install input & printer drivers, various copy commands for setting up your RAM disk and possibly drive swapping commands for setting up drive (device #) designations before you begin your work. Randall gives an example startup file in the geoSHELL User's Manual with explanations of the commands used. Setting up a workdisk is no different than what you've been doing for other GEOS applications. Using geoSHELL. you have two options, you can put geoSHELL on the disk and use 33k of disk space or you can use 'getshell' a file that takes up only 2k of disk space. 'getshell' is a stand alone auto-exec that has the job of looking for geoSHELL when GEOS boots. It becomes the default file for GEOS whenever you exit an application

and takes you to geoSHELL in place of the DeskTop.

KEYBOARDING

A section of the geoSHELL User's Manual is dedicated to the various keys and their uses while in geoSHELL. They appear to be similar to Basic, some examples are:

- CLR-HOME: moves cursor to upper left of the geoSHELL window.
 - SHIFTED/CLR-HOME: clears the geoSHELL window and moves the cursor to the upper left of the screen.
 - ALT: [128 only] changes screen from 40 columns to 80 columns.
- The number keys can be used to load startup files from pages other than page one of the GeoWrite file as geoSHELL loads. I should probably say now that geoSHELL is operated solely from the keyboard, with the exception of the ability to also use the mouse to open a file.

CLI COMMANDS

geoSHELL has a list of 59 commands some of them can be used by themselves, and some require a parameter to accomplish their task. The commands are divided into three sections of the manual, they are: RESIDENT- these load when geoSHELL loads; TRANSIENT, which are divided into INTERNAL and EXTERNAL TRANSIENT commands. Internal Transient commands are executed by simply typing the command and hitting return. External Transient commands need to be loaded before they will execute their appointed task, this is done by typing *load* ETC Name and return. Here are a few of the commands and what they accomplish:

RESIDENT
 a; b; c; d;- drive selection. geoSHELL Directory or DIR- displays current

FEATURE

directory and its contents.

Input- displays current input driver.

Load- loads an External Transient command w/o executing it.

INTERNAL TRANSIENT

atype- displays a true ASCII text file.

dcopy- a batchfile copier that can copy all the files on a disk at once.

fcopy- filecopier that can copy any type of GEOS file as well as any standard CBM file. Except for relative files.

When using the copy commands, be sure that both drives are of the same type, 1571 to 1571 or the commands wont work.

EXTERNAL TRANSIENT

color80- allows colors while working in geoSHELL with a 128 in 80 column mode.

format- formats a disk drive. Only CBM 1541, 71, & 81's can currently be formatted.

These are just some of the commands and their uses. geoSHELL also supports the use of multiple commands on a line with the ^ used as a terminator between executable commands. An example:

```
run photo manager^ date
```

PROGRAMABLE FUNCTIONS

geoSHELL gives you the ability to use and program the function keys. geoSHELL has default settings already programmed for the Fkeys, but you can change this to suit your needs. As the manual says, programming the Fkeys is simple. You can assign a single command or multiple commands to any of the keys. This is done by typing in one of the eight commands for the desired key followed by the sequence of commands. An example:

```
key3 date time dir
```

key3 is Fkey 3. Any time Function key three is pressed you'll be given the date & time followed by a directory of the current active drive. By typing 'key', geoSHELL will display all eight function keys and their settings. If you are using geoSHELL for the first time the 'key' command will display geoSHELL's default settings. Function keys can be programmed differently for each of your disks as needed. Programming the keys is accomplished by creating parameters within a startup file or calling up the directory and cursoring up to the Fkey you want to change and make those changes,

hit return and there you are. The many uses for programmable function keys may include programming a key to load and run your favorite Desk Accessory or Application. Maybe you could use an Fkey to execute your most used command sequence or any other uses for function keys you may think of.

HOTKEYS

geoSHELL has built-in Hotkeys many of which have already been defined for you to use. You can have as many as 128 different hotkey definitions for the 128 & as many for the 64. geoSHELL has a storage area for each computer. This allows users of both systems to have different hotkey definitions for each.

You can view the current Hotkey settings by typing 'hotkey' with no parameters and a list of the settings will appear and start scrolling up the window. geoSHELL will also let you create or change hotkey settings simply by typing 'hotkey' with a parameter, such as:

```
hotkey wr=GEOWRITE
```

This definition already exists. See the manual. You can also, as said before, create all the hotkey commands you need up to 128 for each the 64/128 and then save them all by using the 'setkey' command.

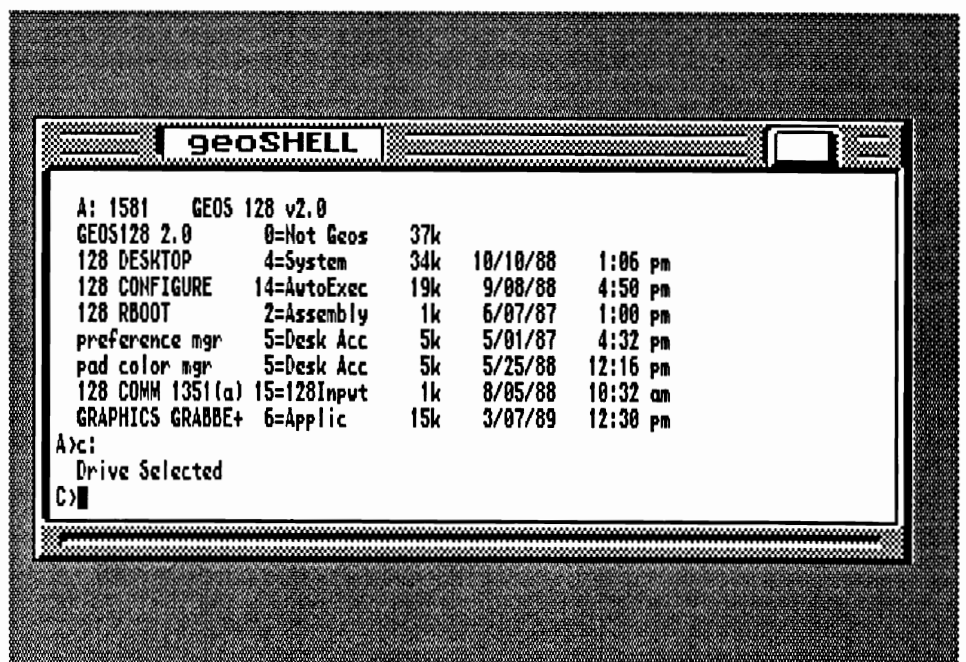
CMD DEVICES

geoSHELL has been designed to work with any disk device that will work with GEOS. Many of geoSHELL's features are centered around the use of CMD's HD & FD series drives, RamLink & RamDrive units, and will help you use these more effectively. geoSHELL makes use of DOS wedge commands to operate in the partitions of a CMD device. According to the information in the users manual, most of the DOS wedge or JiffyDos commands that are listed in any CMD documentation will work in geoSHELL.

IN CLOSING

Mauruce Randall's geoSHELL is an easy to use alternative to the DeskTop. It's quick because there's no paging through DeskTop Icons or clicking an icon and dropping it on a drive. It will appeal to the novice as well as the seasoned GEOS veteran. Randall's user manual is well developed, readable and informative.

There are no real tutorials, but Randall offers useful suggestions and experimentation in their place. The manual could use some screen dumps or graphics to break up the text, but this is not enough of a drawback to effect geoSHELL's usefulness. □



Now Available

geoSHELL

THE MOST VERSATILE COMMAND LINE INTERFACE FOR ANY COMPUTER, AND IT'S MADE JUST FOR GEOS ON YOUR 64 OR 128

- * More than just your usual text-based interface, geoSHELL has many features not normally found in a CLI
- * geoSHELL contains many easy to use and easy to learn features
- * Very functional keyboard controls and screen editing features
- * Even the mouse may be used for selecting a command or a filename
- * Designed to work with any hardware setup that is currently available for use in GEOS
- * geoSHELL makes a nice addition to the DeskTop or any of your favorite icon-based interfaces, or it may be used entirely by itself
- * Additional commands will continue to be developed - simply copy new ones to your disk and they are ready to use

ONLY \$24.95

Price includes shipping to anywhere in the U.S.A. and Canada. For shipping to other countries, please add \$5.00 (U.S. funds only)

**Please send a check or money order to:
Maurice Randall
P.O. Box 606
Charlotte MI 48813**

Requires GEOS 64 V2.0 or GEOS 128 V2.0

King of File Movers

Using DeskTop as a File Manager

by Bob Hunter

GeoPaint and geoWrite may have drawn me to GEOS, but deskTop kept me using GEOS regularly even after I came to realize that even a computer drawing or painting program couldn't turn me into an artist and that a text-based word processor was more suitable than geoWrite for most of my routine writing activities. In fact, for a long time deskTop provided me with my only disk and file utilities besides those on the 1541 test/demo diskette.

I now have other collections of disk and file utilities, but because of its ease-of-use and dependability I still do most of my file management with deskTop instead of using them. Here I'll describe how I would do so with GEOS 2.0 on a Commodore 64 with a single 1541 disk drive.

Selecting Files

Before working with a file, you need to select it, which I prefer to do by pointing to the file icon with my joystick or mouse and clicking. The file icon will become highlighted. A group of files can be selected by holding down the **C=** key and clicking on each of the file icons. Files can even be selected from more than one disk note pad page or from any of the choices presented in the **select** option—all pages, page files, border file; see pages 59-60 of the user's guide for details on how to do so.

Once you select a file or a group of files, you can use the **file** menu commands—**open**, **duplicate**, **rename**, **info**, **print**, **delete**, and **undo delete**—by selecting the command from the menu and, if a dialogue box appears, following the instructions given in it. However, you can't open or print files in a

group, and **undo delete** can retrieve only the last file deleted.

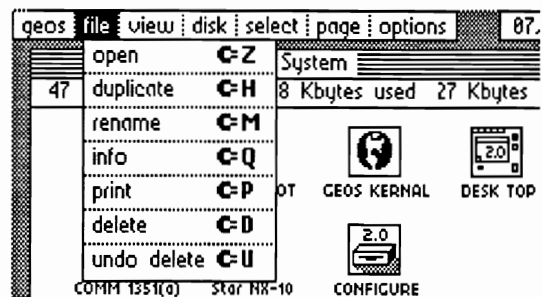
Moving Files

I like to have everything organized, and this often means rearranging files on a disk or amongst disks. To move a file to another place on the same disk note pad, just click on the file icon so that it becomes highlighted, pause, click again so that an outline called a **ghost icon** becomes attached to the pointer, move the ghost icon to its destination, and click to deposit the icon there. If another file icon is already there, the two icons will switch places.

To move a file icon to another page, first move the file to the border by clicking on it to highlight it, pausing, clicking on it again to bring up the ghost icon, moving the ghost icon to the border, and clicking again to deposit the icon there. Then go to the destination page by typing its page number (0 for page 10, and **SHIFT** and 1-8 for pages 11-18) or by clicking on the dog-eared corner at the lower left corner of the disk note pad. Finally move the file onto the page by clicking on the icon, pausing, clicking on it again, moving the ghost icon onto the page, and clicking again.

If you do much moving of files from page to page and get tired of leafing pages, you might want to get QwikTop, an alternative deskTop which shows you seven pages at a time. It can be obtained from John F. Howard, 4433 Clemsford Drive, Virginia Beach, VA 23456, for a shareware contribution of \$7.50.

But now back to the **real** deskTop! A group of files can be moved by selecting them as a group (see above), releasing



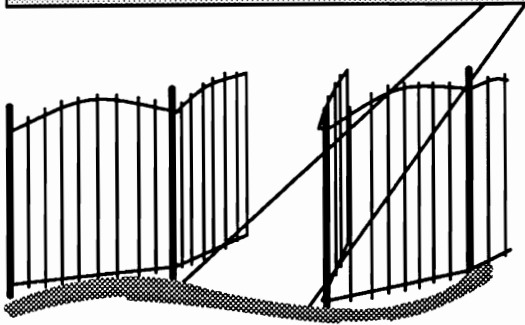
the **C=** key, pointing to one of the selected file icons, clicking again which will bring up a **multi-file ghost icon**, moving the multi-file ghost icon to its destination, and clicking again to deposit the files there.

Files can even be copied to another disk by moving the file or group of files to the border, closing the **source** disk (the disk from which you wish to copy) by pressing **C=** and **C**, replacing the source disk with the **destination** disk (the disk to which you wish to copy), opening the destination disk by pressing **C=** and **O**, and moving each file individually onto the destination disk's note pad, following instructions given about swapping the source and destination disks. If you find moving the files onto the destination disk's note pad individually or swapping the source and destination disks tedious, get a second drive while they're still available.

Looking Ahead

RAM expansion being the theme of the next issue of geoVISION International, I plan to consider the advantages of having a second drive and/or RAM expansion in the next New Users column. However, I'll be glad to postpone that discussion if you, the reader, submit material which would benefit other new users.

This column will be of value to you as a new user only if you and other new (or former new) users share your GEOS experiences, knowledge, and problems with the editor of geoVISION International or with me. Please send accounts of your experiences, tips for new users, and questions to geoVISION itself or to me at: Bob Hunter, 1 Brown's Heights, Grand Falls-Windsor, NF, Canada A2B 1E1. □



The gateWay

Taking You to New Heights

by Grady E. Brown

In 1991, Creative Micro Designs, Inc. brought us a new alternative to the GEOS DeskTop. **the gateWay**. It was so radically different in look and power that it took off with a real bang. About a year and a half later, they have upgraded this unique package with almost a complete rewriting of the software, bullet-proofing what had been a problem in the earlier versions. I would like to say that Paul Bosacki (the original programmer) was inspirational in developing the gateWay. Thank you Paul. And, thanks to Jim Collette for his rewrite where conflicts occurred with other pieces of software, and additions, thus making this truly **the gateWay to new heights** of GEOS computing.

I have looked at the gateWay with four things in mind. Usability, compatibility, utility value, and uniqueness. Power and Speed are relative terms. These two terms can be used too often, and by every

manufacturer, making it hard to determine which product really is the fastest or most powerful. That is why I won't use them.

WHAT IS THE GATEWAY?

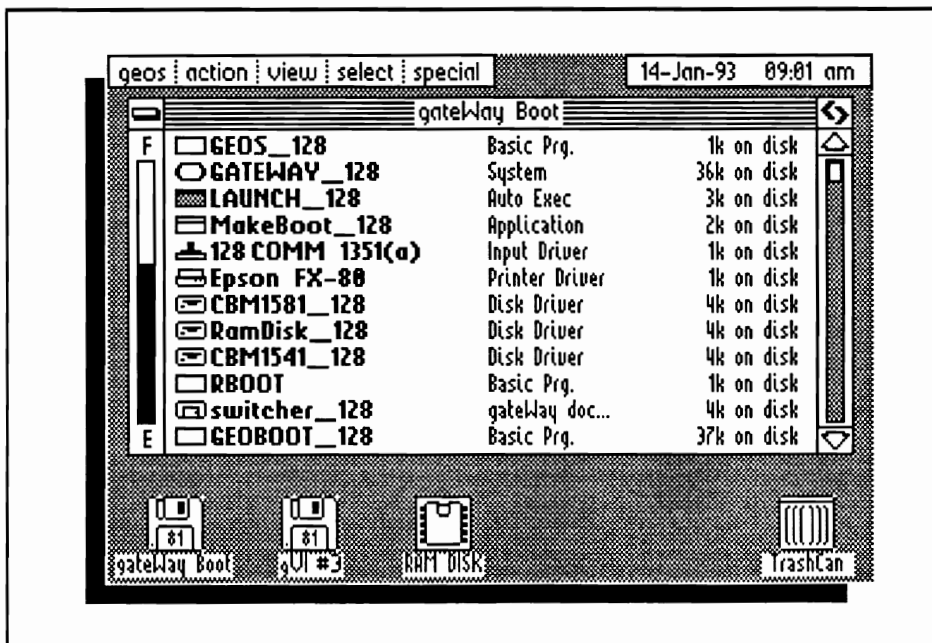
the gateWay is a desktop alternative that takes the place of the GEOS controller we know as the DeskTop as well as CONFIGURE. (No I'm not continually forgetting to capitalize the letter 't' and 'g' in the words 'the' and 'gateWay'. That's its name, and how it's spelled.) It has an integrated new look. Part GeoWorks DeskTop, but mostly new. The major difference is the gateWay uses new smaller icons as well as file information in its list of files, it supports three drives and has a program called **Switcher** that allows task switching from one Application to another with a simple keystroke. It comes in separate 64 and 128 versions, or can be purchased as a set.

USABILITY

This can also be defined as User Friendly. I believe that the gateWay is just that. Since the filepad displays 12 small (new) file icons, as well as the file type and size, it is much faster to locate a file and know what you have on the disk. Scrolling through the files on the disk can be done in five ways. To the right of the filepad is a vertical slider with a button. You can click on that button and move it up or down. Click again to deposit it and the filepad will re-draw at that point. you can also click above or below the slider button and have it move a page at a time in either direction. At the top and bottom of the slider are arrows that when clicked on will move the listing up or down by one file. If held down it will scroll through the files. You can also use the cursor keys. Cursor up/down will work just like the slider arrows, and cursor left/right will move by full pages.

To the left of the filepad is a fuel gauge. It gives you 'at-a-glance' information into the space available (or space used) on that particular disk.

In setting up boot disks the manual is broken into six major categories. Single Drive Systems, Systems Without RAM Expansion, Commodore REU Systems, GEORAM Sytems, RAMDrive and RAMLink Systems, and Combined RAM Systems. Each of those categories contain separate in-depth procedures for the various pieces of hardware possible. Such as, what drives you are using, what size RAM expansion you have, and what size and type of partitions you'd like to have. This makes it quite easy to pinpoint which installation procedure is right for you. If you are planning on changing drive configurations often with the gateWay, be



sure to create a boot disk for each configuration you'd expect to use.

With the gateWay you will not have access to the GeoWorks DeskTop. The TrashCan is a bit different, in that what you throw away, stays in the trash until you either perform some disk function or select **empty Trash** from the **special** pull-down menu. In other words, you may retrieve those thrown out files by clicking on the TrashCan. The filepad will re-write with the names of the files in the trash. Double click on the names that you wish to bring back, and they will be placed back on the filepad. As with the DeskTop, you can adjust your screen colors in the 64 version and 40 column mode of the 128 version.

The close disk icon in the upper left corner of the filepad will do just that. Close that disk. If you happen to be in a subdirectory partition, it will close it and place you in the root directory.

the gateWay gives you ten keyboard shortcuts listed in the pull-down menus. There are 11 additional shortcuts. Page Up/Down and Scroll Up/Down One Item, as mentioned previously. Open Drive A/B/C and Swap Drive A with C/B with C, and Task Swith for the 64 and for the 128. The DeskTop gives you and (shows you) 21 keyboard shortcuts so this is a bit of a step down. I make use of the shortcuts all the time. They really do speed things up. The date and time are in the upper right corner of the screen. The date is in military (international) format, listing the day then the month and then the year. Although the time is in regular 12 hour/am-pm format.

Another great feature that the gateWay has included is the introduction of gateWay documents. These are like Desk Accessories that can be integrated into (made part of) the gateWay itself. You use a program called GWMover to **copy** or **delete** these files into or out of the gateWay. Once they've been copied in, they are then accessed via the **geos** pull-down menu. This way you can set up your system with just the functions you

think you'd need, thus saving space. The more gateWay documents added the larger the gateWay is. One thing to know here is the word **copy** (in this context) means to install, and the word **delete** (you'd think means to uninstall - WRONG) means to delete from the gateWay and the disk. I fell into this the first time I was setting up my boot disk and the gateWay.

COMPATIBILITY

Here is where the gateWay is aptly named. It will let you enter the world of three drive support of any and all Commodore, GeoWorks, Creative Micro Designs Inc., and Performance Peripherals, Inc. devices. That's great for hardware support.

WITH ITS TASK SWITCHER THE GATEWAY OFFERS MULTI-TASKING

Second on the minds of users is that of software support. My first thought is 'Can I still use all the Auto Execs I have on my GeoWorks boot disk?' The answer to that is, probably yes. After creating your boot disk (or Launch disk as the gateWay calls it) you can start copying files over from other disks that you'd want on it. It is recommended to copy Auto Execs over one and a time and try launching the disk to see if it is compatible. Of all the Auto Execs I use I only found one that is smi compatible. And it's only aesthetically incompatible in my mind. That is, AUTO RAW. It plays a short sound bite (RAW file) during boot up. While it is playing it overwrites the left half of the screen (it's a 40 column program) blanking out the left half of the gateWay intro box. other than that I didn't find anything that was in conflict with the gateWay. That's compatibility.

The one thing that you must know about the gateWay v2.5. It requires GEOS v2.0 64 or GEOS 128 v2.0. Also to use it with

RAMLink you need RL DOS v1.40 or higher. For RAMDrive you'll need RD DOS v1.40 or higher, and for one of the Hard Drives you must have HD DOS v1.80 or higher. It is not downward compatible.

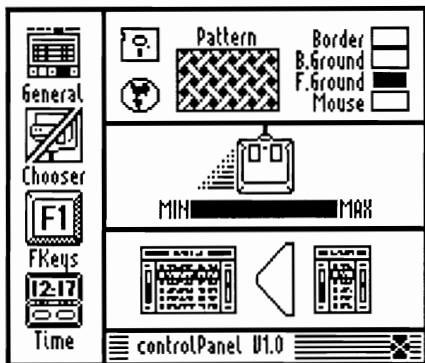
UTILITY VALUE

This is where the gateWay shines its brightest. Three drive support. Although you have full access to all three drives without first swapping drive C for either A or B, there are a couple things that can happen with drive C. You will notice that at times after returning to the filepad you might find Drive C in the location of A or B. That is because the application opened may only allow for two drive access. When the gateWay encounters this it will autoswap the drives. If a data file is opened on drive A or B and the application is on C it will not autoswap. So there may be some swapping going on but you'll never have to do this. Just click on the drive you want to open. A, B, or C.

Again, since there are 12 files listed per page and there are no large icons to write to the screen you can scroll through a disks files much faster than with the DeskTop. There is even a feature that will cut your time immensely, allowing you to browse for a file. It can be found in the **special** pull-down menu. With this feature you can enter the name of the file to browse (search) for, or a partial name followed by an asterisk "*" as a wild card, and the gateWay will browse the disk for the first file it encounters matching the browse criteria.

When copying files from disk to disk or partitions you are given a dialog box telling you what file is currently being copied and how many more to go. This is handy to know during those long 'batch' copying jobs I frequently have. Since the gateWay doesn't have a border file area, I was worried about the ability to swap file positions to organize a disk more to my liking. You'll find that the gateWay does allow for this on the filepad. Just highlight the file you want moved and

then click to get the ghost icon and move it to where you want to deposit it. If there is space preceding the file where you want it inserted it will be placed there. If there is no space, it will swap positions with that file.



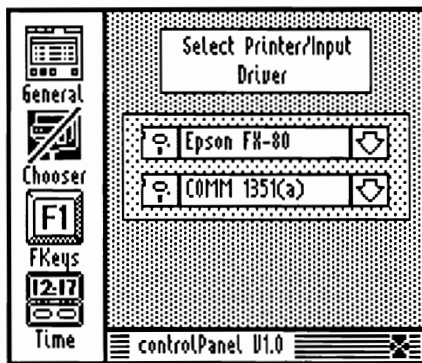
Although I'm not sure why you'd want to do it, the gateWay doesn't allow you to go to the DeskTop. Even if it's on the disk, it won't allow you to open it. And, it doesn't allow you to run (Launch) BASIC programs from the gateWay. You must select SHUTDOWN from the special pull-down menu, then load and run the program from BASIC.

Something you may notice that is missing from the screen is the printer icon. To print a document you must highlight it and then select print from the action pull-down menu. I really don't think this is really any more time consuming but I did like not having to use any of the pull-down menus with the DeskTop since I learned all the keyboard shortcuts. I wish that the gateWay included shortcuts for ALL functions in the pull-down menus.

The main value to gateWay as I see it is the feature task Switcher. This allows you to switch between two separate applications or an application and desk accessory almost instantaneously at the press of the ESCAPE key on the 128 and the RUN/STOP and RESTORE keys on the 64. This can come in real handy when creating graphics in GeoPaint to insert into a GeoWrite or GeoPublish document. Or to switch back and forth between a Photo Album and GeoPaint. Since this is pushing the Commodore and GEOS system to its

fullest there are some cautions to be aware of. This can only be used on systems with RAM Expansion and Switcher needs 64K of expansion memory to function. It will only install on systems with expansion of at least 512K of memory. Even though Switcher is a gateWay document and is integrated into the gateWay, you must also have the Switcher file on the disk. don't try to open two applications of the same type, it will confuse GEOS when you exit, since applications all use the same name for the swap file created when you open a desk accessory. Try to update the document before you switch out of it, as this is not done by the Switcher.

Another time-saving feature is Touch. It allows you to update the time and date in a files info box in batch mode style. Let's say you just finished



updating one file in a three file set and would like all three to contain the same current date and time. Select all three files and then Touch from the geos pull-down menu, and it change them all to the current date and time.

For those with Hard Drives or larger RAM expansion that supports partitions, you can copy files to and from partitions with QuickMove. Even from one partition to another, on the same disk.

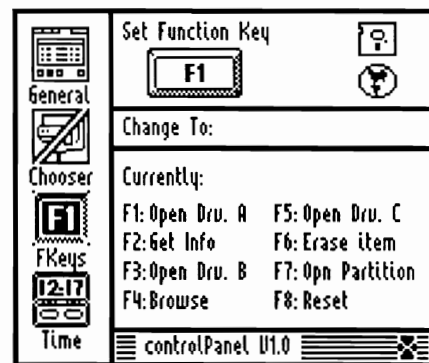
UNIQUENESS

There are many features to the gateWay v2.5 that set it apart from others and the DeskTop. The disk icons at the bottom of the screen can be customized. If you have an icon you've made for a photo album

disk, you can set it to be that disks icon. These use the original larger GEOS icons, so if you have IconMaker you can create your own. Just place a file with the icon you'd like to use in the disk you'd like it set to, highlight the file and select set disk icon from the special pull-down menu. Shortly the drive icon will be set with your chosen icon. Every time you open that disk in the gateWay it will be shown that way.

That brings me to an odd little file that will be appearing on all your disks after opened in the gateWay. That is .info_gw. This 1K file is hidden from the gateWay and can only be seen if using the GEOS DeskTop. It includes all the disk information that you've set while using the Control Panel. The filepad size, screen colors and patterns, mouse speed, and the disk icon you set for that disk.

The Control Panel found under the geos pull-down menu is like that of the Preference and Pad Managers. It has four functions. The first is the General area where you are when you first open the Control Panel. It allows you to set the colors of the screen and filepad, and set the background patterns. You can also set the mouse speed and tell the gateWay whether you want to view the full filepad or just the icons/names portion when you open that disk. The Chooser section is where you select your printer and input drivers. The third is FKeys. Here is where you can create your own choice of



function key shortcuts. (Macros) Set up correctly you can really save yourself a lot of time by using these. The fourth is Time.

FEATURE

This is where you set your date and time. If you are using a CMD device that has an Real Time Clock (RTC) feature, like their hard Drives and RAMLink, the gateWay will automatically read the time from there and set it. And, to return to the filepad, click on the X in the lower right corner of the Control Panel box.

As mentioned before, the use of partitions are a unique feature of the gateWay if using a device that supports them. As is the task Switcher, browse function, and the ability to set disk icons for all your GEOS disks.

Another nice feature of the gateWay is that there is no longer a separate menu for disk and file. There are four features that (depending on whether you've highlighted a file or not) will perform on a disk or the selected file(s). In other words, if you haven't selected a file or

group of files, the function will be performed on the disk. **get info, rename, copy, and erase.** And, these four have keyboard shortcuts.

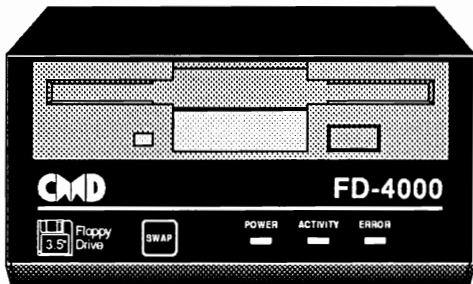
the gateWay is one that will be the new standard to use for everything that is GEOS. It supports everything and is so versatile. If you don't have it yet or only have an earlier version, I highly recommend purchasing it or upgrading to v2.5. Paul Bosacki, Jim Collette, and CMD have worked well together to create such a usable, compatible and unique GEOS controller, taking us to new heights. □

SCREEN DUMPS: the gateWay - Page 15. The Control Panel General Settings Area - Page 17, Column One. The Chooser - Page 17, Column Two. FKey Definer - Page 17, Column Three.

We Love To Hear From You!

Send us your questions & answers, suggestions & complaints, software & hardware for review, article submissions, or just say Hi!

Mail to:
geoVISION International
816 S.E. Polk Street
Camas, Washington
98607-2240 U.S.A.



Faster than any other floppy, more powerful than a 1581, and able to store 3.2 Megabytes on a single disk. Its new, its exciting, its the ...

CMD FD Series™
Disk Drives

The Highest Capacity Floppy Available for ANY Computer Platform

While MS-DOS users boast of 2.88 MB, Mac users struggle with 1.44 MB, and AMIGA users are frustrated by a wimpy 880K, Commodore 64/128 users soar to new heights with CMD's new FD Series 3.5" floppy disk drives. CMD's FD-4000 provides an amazing 3.2 MB of storage while its little brother, the FD-2000, offers a 1.6 MB alternative at an attractive price.

Both drives are 1581 compatible and use Double Density (800K) and High Density (1.6 MB) disks while the FD-4000 can also use Enhanced Density (3.2 MB) disks. Imagine, putting up to twenty 1541 disks or four 1581 disks onto a single 3.5" floppy!

FD Series drives are faster, quieter, and more reliable than a 1581 and are just as easy to use as your other drives. Why settle for an outdated 1581 scavenged from the dark corners of a dusty old warehouse, when you can have an FD Series drive helping your C-64/128 to once again set new standards in technology.

- **Fast** - The fastest floppy ever made for the C-64/128. Up to 20% faster than a 1581. Built-in JiffyDOS makes it up to 1200% faster on JiffyDOS-equipped systems
- **Compatible** - Emulate 1541/71/81 drives for greater software compatibility; Use Native Mode with MS-DOS style sub-directories for additional flexibility and power. Perfect for GEOS, BBS, Productivity, CP/M and more
- **Easy-to-use** - FD Utilities create and delete partitions without complicated commands or procedures. Disk and File copiers make it easy to transfer software
- **Special Features** - Set to any device number from 8-15. SWAP button allows instant device 8 or 9 selection
- **Compact** - Smaller than a 1581, with sturdy metal case, wall mount power supply and sleek black paint

RTC Option

FD Series Drives may be equipped with an optional Real-Time-Clock for time and date stamping of files and automatic setting of the GEOS Clock.

BCOPY

CMD's all new backup utility allows RAMLink, RAMDrive, HD and FDowners to backup single partitions or entire contents to multiple 1541/71/81 or FD disks.

KAO® 3.5" DISKS

High Density
 for FD-2000 and FD-4000
 Box of 10 \$14.95

Enhanced Density
 for FD-4000 only
 Each \$9.95
 Box of 5 \$44.95
 Box of 10 \$79.95



Special Introductory Offer



FD-2000 ~~\$239.95~~ \$219.95 • FD-4000 ~~\$349.95~~ \$299.95 • RTC Module \$20.00 add'l

Shipping: (Continental U.S.) UPS \$8.50, 2nd Day Air \$16.00, C.O.D. add \$5.00 (PR, AK, HI) \$16.00 (Canada) \$18.00 (Foreign) \$50.00
 Offer valid thru 3/31/93. See adjoining ad for ordering terms and info. Prices subject to change without notice.

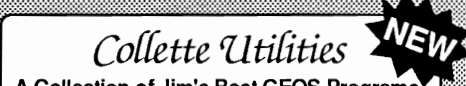


Eliminates jagged output • Laser-like output • GEOCABLE compatible
 Unattended printing of multiple copies • Text and Graphics drivers
**NEW Enhancements: Improved 9 Pin HQ Drivers, Improved output formatting,
 and Border Font support for geoWrite. New Font collections now available!**

Perfect Print LQ is a complete print enhancement package for GEOS that delivers the highest quality dot matrix output possible. Includes a unique print utility and font set for enhancing GEOWRITE documents, utilities for creating fonts, and high quality drivers for other GEOS applications. Improves text and graphic output on virtually all 9 & 24 pin dot matrix printers and supports font attributes such as italics, outline, underline, bold, etc.

Main system (All drivers, utilities, and 7 fonts) **\$34.95** • Complete System (Main System w/Font Pkgs. 1 & 2) **\$49.95**
 Font Packages 1 & 2 (42 LQ fonts) **\$29.95** • Font Package 3 (17 LQ/5 Border fonts) **\$19.95** • Border Font Collection 1 **\$19.95**
 Shipping/Handling **\$5.00** Canada add **\$4.50**

Perfect Print LQ operates with most Epson and IBM compatible 9 and 24 pin printers, but does not work with laser, ink jet, bubble jet, RS-232 or strictly Commodore compatible printers. Contact CMD for info on specific models.



Collette Utilities

A Collection of Jim's Best GEOS Programs

Jim Collette has long been one of the premier programmers in the GEOS community, and with Jim heading off to college this year, we have been given a golden opportunity to offer you this fine collection containing some of his best known work. Includes GEOWIZARD (gateWay compatible), MiniDesk, Font Editor, Font Changer, Select Printer, AddAlbum Auto, DOS Wedge, and Jim's Laser Landscape utilities for postscript laser printers.

Available now for \$34.95 plus \$5.00 shipping

Note: Most utilities on this disk require GEOS v2.0 (64 or 128). Some applications may require 512K RAM expansion.



The ultimate desktop for GEOS 64/128 V2.0
 Streamlined File Management • Task Switching
 Three drive support • Accesses full capacity of
 CMD Storage Devices, REU's & GEORAM

gateWay/64 **\$34.95** gateWay/128 **\$34.95**
 gateWay 64/128 combo **\$49.95**

Current gateWay User's should contact CMD for upgrade information. CMD recommends a minimum of 512K RAM Expansion for best results



The Alternative Paint Program for GEOS

While there are a lot of things we could say about this all-new paint program for GEOS, perhaps the features say it best. If you use geoPaint, you NEED geoCanvas!

Available now for **\$34.95 plus \$5.00 shipping**

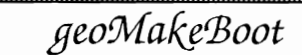
geoCanvas operates in 40 column mode and requires GEOS 64 V2.0 or GEOS 128 v2.0, one 5.25" drive and a minimum of 512K RAM expansion.

Powerful New Tools & Utilities

- Draw polygons, connected lines and rays, Ruler display 100ths of an inch, re-definable grid lines, larger font buffer, Pattern and Brush Editor with standard patterns, full window color changer
- ScrapCan allows copying and pasting of large color scraps while PaintCan changes ownership from geoPaint doc's to geoCanvas
- **User Interface and Window Controls**
- Open up to three documents at a time, movable tool box, fast updating scroll bars and controls, re-sizeable windows, keyboard shortcuts for all menu items, close button on windows, threshold control for better previews, modes for viewing entire screen, file requestor to access fonts and DA's, screen blanking, Menu option to display time and date



Hi-performance ROM upgrade - Performs all disk accesses up to 15 times faster
Guaranteed 100% compatible - Easy to install on most systems - Built-in DOS Wedge & file copier
 (Please specify computer & drive model and serial #.)
 JiffyDOS 64 or SX-64 **\$59.95**
 JiffyDOS 128 or 128D **\$69.95** • Add'l Drive ROMs **\$29.95**



geoMakeBoot makes booting GEOS from nearly all devices and making back-up copies of the GEOS boot disk easy and convenient. Besides being compatible with virtually all CBM compatible devices including CMD Hard Drives, RAMLink and RAMDrive. Most importantly, geoMakeBoot is simple, inexpensive and easy to use.
geoMakeBoot \$12.95 + \$2.00 shipping



Provides an industry-standard IBM style serial port that communicates at speeds from 300-38,400 baud and provides reliable communication using Hayes-compatible RS-232 modems. Plugs into the expansion port and includes terminal programs and software for transferring files to other computers.
 SwiftLink (Cart) **\$39.95** - SwiftLink Cable **\$9.95**
 Shipping: US \$6.00 (Cart), \$5.00 (Cable), \$7.50 (Both)



SID Symphony adds a second complete SID chip to your 64 or 128 and can be attached to our home stereo or amplified speaker systems to provide a whole new dimension in sound. Enjoy hundreds of public domain stereo songs, import MIDI files, or use Computers Music Systembook and SID editor to create original stereo music.
 SID Cartridge **\$39.95** • Computer's Music Book **\$22.95**
 Shipping: US \$6.00 (Cart), \$5.00 (Book), \$7.50 (Both)



High-Speed Self-Contained Battery-Backed RAM Cartridge

- **Compact** - All the features you've ever wanted from RAM expansion in a compact unit. Three capacities: 512K, 1 and 2 megabytes. Dimensions: 6" x 3" x 1" h.
- **Portable** - The relatively small size of RAMDrive, coupled with its built-in battery pack make it ideal for porting data from one computer to another.
- **Compatible** - Use RAMDrive with GEOS, CP/M, Q-Link, BBS programs, productivity software and more.
- **Non-Volatile** - External power supply eliminates drain on computer power supply and retains data indefinitely. Internal rechargeable batteries retain data up to 7 days.
- **FAST** - Up to 400x faster than a 1541; 20x faster than RAMDOS; Built-in JiffyDOS speeds access to CMD Hard Drives and JiffyDOS-equipped floppy drives.
- **Easy to Use** - Plugs into the cartridge port. Operates like a standard disk drive. File and disk copiers included along with partitioning, support utilities, and new GEOS configure.
- **RD-DOS** - Organize RAM into as many as 30 manageable partitions that emulate 1541, 1571, & 1581 drives or expand to the full RAM capacity with MS-DOS style subdirectories. Autoboot 64 and 128 mode programs. Configurable as any device number from 8 through 30.
 RD-512 **\$199.95** RD-1 **\$249.95** RD-2 **\$299.95**



The Ultimate in Mass Storage for the 64/128

- **Capacity** - 20 Mb to 200 Mb capacities enable you to store the equivalent of up to 1250 1541 (170K) disks.
 - **Speed** - The fastest Commodore compatible hard drives. Speeds up to 50x faster than a 1541.
 - **Compatibility** - Ideal for use with GEOS, CP/M, Q-Link, BBS programs, productivity software and much more.
 - **Compact Size** - 3 1/2" SCSI technology allows for a compact case about the same size as a 1581.
 - **Expandability** - Chain up to six SCSI devices or connect to Macintosh, IBM- Compatible & Amiga computers.
 - **Built-in Real Time Clock** - Automatically time and date stamp files and sets the GEOS clock.
 - **HD-DOS** - Organize storage into as many as 254 partitions that emulate 1541, 1571, & 1581 drives or expand to 16 Mb with MS-DOS style subdirectories.
 - **Easy to use** - Connects like a standard drive and easy to read manual explains all facets of drive operation. Comes complete with copiers and maintenance utilities.
 - **Packed with convenient features** - The CMD HD Series hard drives come with features like our SWAP buttons, Front Panel Partition Selection, and more.
- HD-20 CALL HD-40 \$599.95**
HD-100 \$799.95 HD-200 \$999.95



Power Backed REU Interface and Expandable RAM Disk

- **Non-Volatile Storage** - Operates on its own external power supply. Optional rechargeable battery back-up retains data even during power outages.
 - **Compatible** - Use GEOS, CP/M, Q-Link, BBS programs, productivity software and more. RAM port for connection of REU or GEORAM of any capacity. Pass-thru ports supports most cartridges.
 - **User Expandable** - Internal RAMCard allows expansion up to 16 Mb by using standard SIMM's.
 - **FAST** - Up to 400x faster than a 1541; 20x faster than RAMDOS; Built-in JiffyDOS plus parallel interface to speed access to CMD Hard Drives.
 - **Easy to Use** - Plugs into the Cartridge Port. Operates like a standard disk drive. File and disk copiers included along with partitioning and GEOS support utilities.
 - **RL-DOS** - Organize RAM into manageable partitions that emulate 1541, 1571, & 1581 drives or expand to the full RAM capacity with MS-DOS style subdirectories.
- | | | | |
|--------------------------|-----------------|-------------------|-----------------|
| RAMLink (no RAMCard) | \$179.95 | Battery w/cable | \$24.95 |
| RAMLink (w/RAMCard II) | \$219.95 | HD Parallel Cable | \$14.95 |
| RAMLink (RAMCard II/RTC) | \$239.95 | RTC add-on Kit | \$29.95 |
| RAMCard II (with RTC) | \$79.95 | 1Mb SIMM | \$42.00 |
| RAMCard II (without RTC) | \$59.95 | 4Mb SIMM | \$145.00 |

Ordering Information and Shipping Charges

CMD Hard Drives: Continental US: \$25.00 per drive (UPS ground), \$35.00 (2nd-Day), \$45.00 (Next-Day). Canada: \$50.00 (Airmail). COD to U.S. only \$5.00 add'l charge. Foreign prices: Add \$100.00 to U.S. Retail Price. Add \$5.50 per order (UPS ground), \$10.00 (2nd-Day Air), plus \$5.00 for APO, FPO, AK, HI, and Canada, or \$15.00 for overseas orders. No add'l shipping if ordered with any hard drive. COD's add'l \$5.00

JiffyDOS: US: \$12.00 (UPS), \$20.00 (2nd day), COD add \$5.00. Canada: \$23.00. Foreign: CALL

RAMLink: US: \$8.50 (UPS), \$16.00 (2nd day), COD add \$5.00. Canada \$18.00. Foreign: CALL

RAMDrive: MA residents add 5% sales tax. We accept VISA, MasterCard, Money Orders, C.O.D., and personal checks (allow 3 weeks for personal checks to clear). Credit card orders provide the following: Card holders name, billing address, home/work phone, card number, expiration date and issuing bank name.

PRICES AND SPECIFICATIONS SUBJECT TO CHANGE WITHOUT NOTICE - WE VERIFY ALL CREDIT CARD INFORMATION AND PROSECUTE INDIVIDUALS ATTEMPTING TO PERPETRATE FRAUD

Creative Micro Designs, Inc.
 15 Benton Drive, P.O. Box 646
 East Longmeadow, MA 01028

ORDERS ONLY: 1-800-638-3263
 Questions and Support: 1-413-525-0023 • FAX: 1-413-525-0147
 • Office Hours: 10 AM - 5 PM Eastern Monday thru Friday •

GeoPaint Revealed

Part One - The Menus

by Jane M. Voskamp-Jones

What is geoPaint ?

geoPaint is a full-featured graphic paint program. geoPaint works with full pages as they are printed on paper, rather than with files one or two screens large. The maximum printed resolution of a document is 80 dots per inch (dpi), or 640 dots wide (80 'cards') by 720 dots long (90 'cards'). Roughly a standard 8 x 10 inches page. (Note : each 'card' is 8 pixels wide and 8 pixels high). Since this resolution is greater than what can be shown on your screen, geoPaint supports the use of a Drawing Window. The Drawing Window displays only a portion of a much larger document. With geoPaint you have the opportunity to create quality, detailed graphics and combine them with text. geoPaint is often the first choice of graphic programs for Artists because it is both easy and versatile.

With GEOS v1.2, the major criticism of geoPaint is the limited Drawing Window size and the inability to quickly scroll around the page. What was needed was a bigger and better geoPaint. GEOS v2.0 for both C64 and C128 brought geoPaint v2.0 and it was much improved over the previous version. For C128 80-Column mode, you are able to view the full width of your graphic page, a full 640 pixels. However, you are still tied to a Drawing Window viewing depth of 200 pixels, approximately one quarter of the full geoPaint document. This results in a thinning appearance of your graphic. Switching back to 40-Column mode can reassure you of the correct perspective of depth from a 320 by 200 pixel Drawing Window on your document.

From geoPaint, the Photo Manager can be accessed from the GEOS Menu as a Desk Accessory. This allows bitmap Photo

Scraps of all sizes to be stored in Photo Albums for a unique filing system, and gives ready availability of imported graphics to geoPaint. The upgraded Photo Manager v2.1 lets you rename each scrap and search through extensive Album pages for the graphic you need, quickly and conveniently. By using the Photo Manager from geoPaint, sizing of the graphic can now be done within the drawing window, along with smoothing, pattern choice, and transparent overlays. This means a small 'Print Shop'(tm) graphic can be enlarged and then smoothed to eliminate a lot of touch-up. For the paint brush, using patterns also has a whole new versatility. It is possible to overlay patterns opaquely and transparently.

One of the most important new features of geoPaint v2.0 is the keyboard cursor control of the drawing tools. This greatly increases accuracy of many drawing situations and allows precise placing of the edit box. It gives better control than the mouse or joystick can offer.

geoPaint & Menus

For the purposes of this discussion geoPaint v2.0 C128 will be referred to unless otherwise specified. There are not that many differences between C64 and C128 geoPaint. The Data files they produce are interchangeable. At this point, we will start by assuming you have organized your Work Disks for geoPaint, and Data Disks if you have a second Disk Drive. To get started, double-click on your data file and geoPaint will swing into action, positioning you in the top left corner of your document, and displaying the geoPaint Command Menu. You are now

ready to begin, but wait, what do all those words mean? Up there in the corner! If you already use geoPaint, you are sure to remember your horror of the things you did not know when you began. A little explanation is necessary for those less adventurous.



A Tour of Menus

The only Menu present at the start up of geoPaint is the Command Menu, as visible in the diagram, which displays geos, file, edit, options, fonts, and a Spanner (to access the Toolkit). The C64 geoPaint v2.0 does not have a Spanner, and the Toolkit is constantly displayed on the left side of the screen. The geoPaint document filename is displayed on the right, a Status Box is displayed to the right of the current pattern indicated in the lower left. Each Menu has a sub-Menu, to activate any of these necessitates moving your pointer over the Command Menu and click once. Instantly a sub-Menu will pop down displaying all the choices available to you. Click once to make your selection. However, moving the pointer off the sub-Menu will cause it to disappear without making a selection.

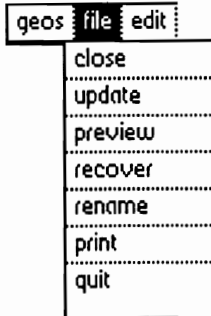


geos Menu

The geos Menu contents varies from user to user. Why? Well it depends on the number of Desk Accessories available to you on your Work Disk, and the job at hand that you have prepared for. The first eight Desk Accessories on the Disk will be displayed. From the diagram you can see a typical geos Menu.

The 40/80 option is not available to C64 geoPaint users. As most Work Disks should have the Photo Manager on them for working with graphic Scraps, the geos Menu is where it's displayed and accessed.

The Photo Manager is a Desk Accessory, and as such geoPaint will allow you to access it from the geos Menu. To activate it, you move your pointer down the menu to it, and click on it once (more on this later).



file Menu

The file Menu is what you might call a 'house keeping' menu, with items that handle geoPaint documents. This Menu does not vary, and it allows you to access the file handling features of geoPaint. From the diagram you can see the options available to you, close, update, preview, recover, rename, print and quit.

Close will update your document, close the file, and display a Dialog Box showing the options Create, Open and Quit. If you click on Open, a DBGetFiles Box will appear, listing all the geoPaint files existing on your Disk, to a maximum of fifteen files. You click on the file you want if it is present, and then click on the Open gadget. If you are using two Disk Drives and your file is on another Disk, click on the Disk gadget, and insert your new Disk. If it is on another Drive, click on the Drive gadget to view the files available on the Disk. The Drive gadget will only be displayed when you are using two or more Drives, but geoPaint will only recognize the first two Drives. The Cancel gadget returns you to the previous Dialog Box.

Update will write any new changes in your document to the file on Disk since the last Disk access, unless you're in a RAM disk. geoPaint does not automatically save the changes you have made to a document, unless you activate the Photo Manager or Preview mode.

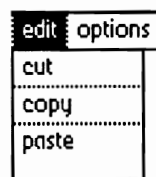
However, if you goofed up since your last Disk access, Recover will let you bring back in the document as it was when last updated. But it will not work if you have accessed the Photo Manager or used Preview.

Preview allows you to see a reduced overview of your full geoPaint document as it would look when printed out. Click on the OK gadget to return to geoPaint.

Rename lets you change the name of the document on Disk. A Dialog box prompts you for a new Name, enter and press RETURN.

Print will call up a Dialog Box for the printer driver, if there is a selection of printout modes. Otherwise, a Cancel gadget is displayed with the pointer, while the document is translated and sent to the printer. The entire geoPaint document is output. To Cancel the print, depress the button until the pointer returns to the Drawing Window.

Quit automatically returns you to the DeskTop on your Work Disk, after first updating the file on Disk.



edit Menu

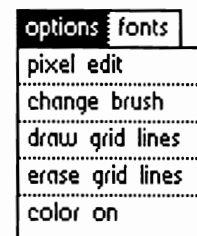
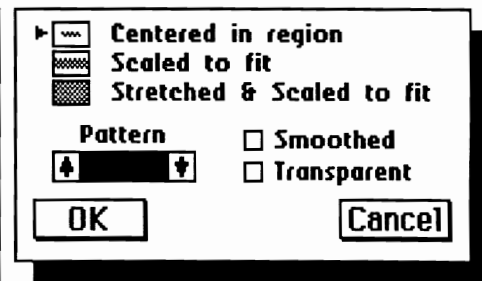
The edit Menu is the powerhouse of geoPaint. From the diagram you can see the options that are available for importing and exporting graphics within geoPaint. Mostly, the edit Menu is used in conjunction with the Photo Manager to manipulate Photo Scraps (more on this later). The options are cut, copy and paste. To be used, the Edit tool from the Toolkit must be active, with a region defined. Otherwise, the options will have no effect.

Cut will cause geoPaint to delete an

area of graphics set with the Edit tool (this also applies to the Text tool and defined region), and place the deleted graphics into the appropriate Scrap file on Disk, overwriting any previous Scrap. Whatever was within the defined region has been removed from the document. The Scrap can be placed into a Photo Album via the Photo Manager.

Copy does the same as the Cut option except that the defined region is copied into a Photo Scrap and not removed. The document itself is not affected.

Paste will place what is in a Photo Scrap on Disk into the defined region set with the Edit tool. The Paste function has a Dialog Box to select from Centered in region, Scaled to fit region, Stretched & Scaled to fit region, as methods of pasting, which you can see in the diagram below. You also get a choice of Smoothed and Transparent, or both to paste the graphic, along with a choice of paint patterns. Click on OK to continue the paste, or Cancel to escape back to geoPaint. Anything previously in the region of the paste will be overwritten, except if you choose Transparent.



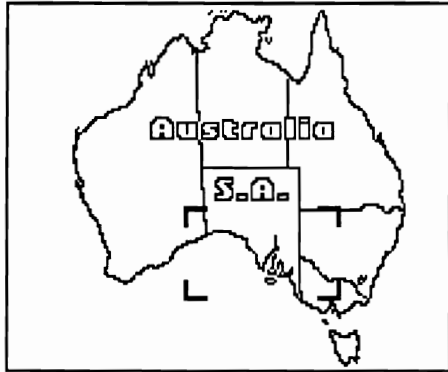
options Menu

The options Menu contains various items that allow you to further Edit a document. From the diagram you can see pixel edit,

THE ART GALLERY

change brush, draw grid lines, erase grid lines, color on.

Pixel Edit allows you to edit data in the current Drawing Window on a pixel by pixel basis. A define area Frame appears in the upper left of your documents current Drawing Window.



The diagram shows an example of the Edit Frame, (the four dark corners). Move the Frame to the region to edit, and click once. geoPaint will enlarge the area to fill the screen display. The screen shot below shows the full Pixel Edit display. The same area is shown in standard size at the bottom of the screen to the left of the Status Box. The drawing tools are available from the constantly displayed Toolkit. While in Pixel Edit mode, Normal Edit is available from the options Menu to return to the normal Drawing Window.

Change Brush command provides options for controlling the size and shape of the Paint Brush tool when active. The Status Box is replaced with the Brush menu of thirty-two different Brushes, which you can see in the diagram. Move the pointer to the desired Brush and click.



The Color On command will turn the Color On, in 40 Columns only. When Color is On, the options Menu will display Color Off. To printout a color document, first select Color Off which is now displayed in the options menu.

fonts	
* BSW	9 point
LW_Cal	10 point
LW_Roma	12 point
	14 point
	18 point
	24 point

fonts Menu

The Fonts Menu will vary from user to user. Again, the reason is due to the personal choice of Fonts required for the

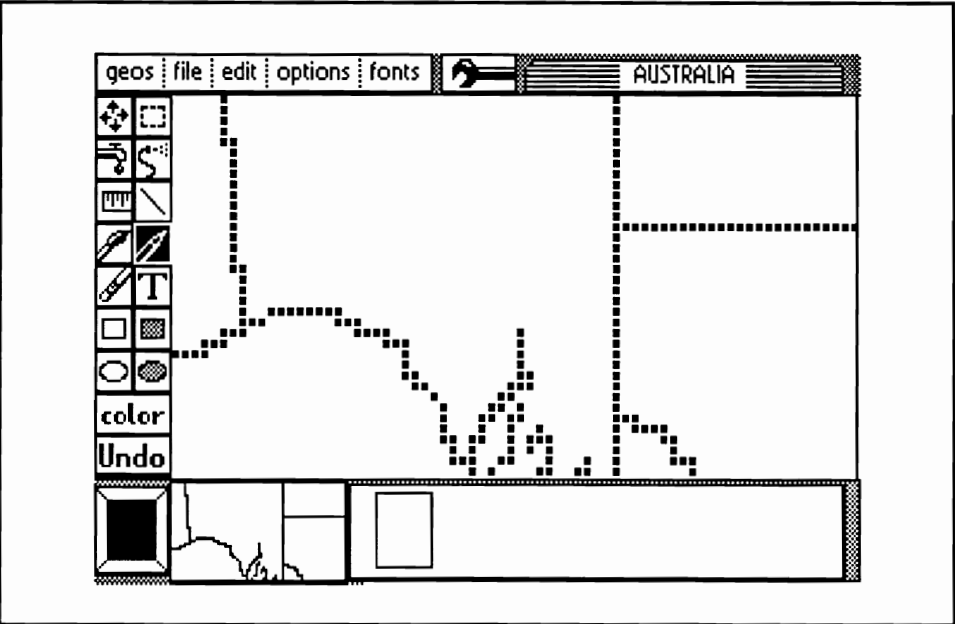
job at hand. The Menu will display the first seven Font files found on the Work Disk, as shown in the diagram. Click on the desired Font and the Fonts point size menu will be displayed. Click on the point size you need and when the menu disappears, text mode is waiting for a region to be defined for text input.

Spanner

The Spanner when clicked upon will display the Toolkit. To remove the Toolkit, click on the Spanner again. Next, in GeoPaint Revealed, Part Two - The Toolkit.



Jane M. Voskamp-Jones JMV Grafix P.O. Box 635 Blair Athol 5084 South Australia ☐



DON'T LEAVE US BEHIND...

Make sure you send us your change of address as soon as you know it, so geoVISION International will arrive at your new home without delay.

Just send us your old and new address, as well as the account number that is printed above your name on your mailing label, and we'll update our files.

Don't miss a single issue.

This is the latest (and not so latest) news that we have heard regarding software and hardware for GEOS and the Commodore. This information has been gleaned from various networks, BBS's, readers, advertisements, and other publications so the validity of such cannot be fully verified. Please do not base any major decisions on what you read here. If you have heard of something new or would like your product mentioned here, please write in and tell us about it. We will be happy to pass it along to our readers.

New Horizon Software now offers **Four Drive Upgrades** for all your GEOS applications from Berkeley Softworks. The upgrade makes a permanent modification to the application itself to allow the application to directly open files on any of the four drives, and will be able to scan through all four drives using the DRIVE icon in the application's dialog box. These upgrades are only for those that use an alternative desktop that supports four drives. Such as: Dual Top V3.0, geoSHELL v2.0, and TopDesk. The upgrade comes in two forms. The various application upgrades and Kernal upgrades. The cost to upgrade an application is \$5.00 each. There is a \$2.00 'return Shipping' cost. All you need to do is send in the BSW applications you want upgraded with a check or money order and the order form that is included with the information New Horizon sends out. When requesting more information, supply an SASE with your request.

I'm sure you've all heard by now that RUN magazine has ceased publishing and subscribers have received postcards regarding this. The interesting thing is, they were sent by PC WORLD. The postcard tells the recipient that with the January 1993 issue, their RUN magazine subscription will be fulfilled by PC WORLD magazine. For those that already subscribe to PC WORLD, their subscriptions will automatically extended. It goes on to describe the various benefits the magazine has to offer, including a new design. As a past subscriber to RUN Magazine, you are entitled to 1.6 issues of PC WORLD for every issue remaining in your subscription, and you are given a 100% satisfaction guarantee or you'll be refunded the full value of your remaining issues. This was signed by David Ball, Subscription Director, PC WORLD. In fine print at the base of the card they give an address and telephone number to contact for more information.

If you liked the sound and look of geoSHELL, I think you'll like this. Maurice Randall is working on another desktop replacement for GEOS. It is currently called **DashBoard** and looks very interesting. It supports up to four drives. The drive icons look just like the drive that it represents. There is a 'quick box' that displays the first four applications from whatever drive is wanted. The deskpad also contains the first four applications on the open disk, as well as a drawer for each file type on the disk. All the files are organized in the drawers. Like the DeskTop, you can choose to view files by drawers & icons or by text. There is a separate window for border files. Double clicking on a drawer opens it. Maurice says that he will introduce with DashBoard, a universal disk driver allowing much more flexibility and the use of multiple drive types without the need for a RAMdisk. It contains the usual GEOS pull-down menus, a new looking trash can (FILE 13), and has a space for the date and time to be inserted later. I really hope that Maurice will continue

to develop DashBoard. We'll let you know more on as it becomes available to us.

If you have a new product you'd like mentioned here, just drop us a line ATTN: NEWS, with a Press Release and/or sample copy of the product and we'll spread the word. If you'd like it reviewed, send it ATTN: REVIEWS. □

New Horizon Software
2253 N. Kansas Avenue
Springfield, MO 65803 U.S.A.

PC WORLD Circulation
501 Second Street
San Francisco, CA 94107 U.S.A.
1-800-274-5241 (Info)
(415) 882-0936 (Fax)

Maurice Randall
215 E. Harris
Charlotte, MI 48813 U.S.A.

geoVISION International
ATTN: (column name)
816 S.E. Polk Street
Camas, WA 98607-2240 U.S.A.

Display Page Advertising

Get more for your advertising dollars by advertising in geoVISION International. Our readers are looking for that one specific application or desk accessory to make their life just a little bit easier. Or, that special font or piece of clip art to spruce up their project. YOU can be that source. Advertising is available at the following rates per issue, and must be paid for in advance. Please submit your ad in one of the following formats: 1) Camera Ready copy, or 2) On 5 1/4" (1541 format) or 3 1/2" disk, in geoWrite, geoPaint, geoCanvas, or geoPublish format, with all the needed fonts included. geoPublish and LW (Laser Writer) fonts are recommended for the very best results.

Full Page	7 1/2" x 9 3/4"	\$30.00
Half Page	7 1/2" x 4 7/8"	\$15.00
Third Page	7 1/2" x 3 1/4"	\$10.00
Quarter Page	3 3/4" x 4 7/8"	\$7.50
Sixth Page	3 3/4" x 3 1/4"	\$5.00

TopDesk

From The TopDog - Dweezil

by Grady E. Brown

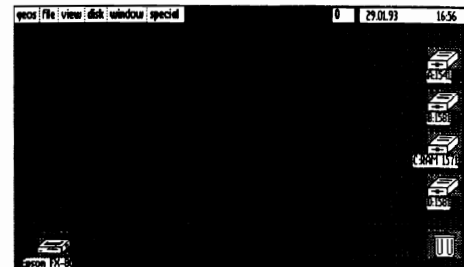
The alternative of the year is so different and yet so much the same as the desktop we've all come to love and hate. This version comes to us from four great programming minds of Germany. Walter Knupe, Volker Goehrke, H.J. Ciprina, and Ralf Bonse. It is marketed through the GEOS Users Club in Germany and Quincy Softworks in the United States and Canada.

TopDesk is a TOTAL replacement of GeoWorks' DeskTop. Upon boot up, the TopDesk screen looks much like that of DeskTop, with the exception of no desk pad (blotter) in the center of the desk. The GEOS menus in the upper left are at first glance much the same, as are the locations of the printer driver, trash can, date & time, and the drives' icons. The icons for the drives and the printer are smaller and more sleek looking.

This is the point that TopDesks' looks

leave DeskTop in its dust. Clicking on a drive icon will make this quite apparent. The icon expands out and into the free pad space with a real 'window-like' appearance. This is called 'exploding icons'. This window can be resized and moved to any location on the screen. Even covering the menus and icons.

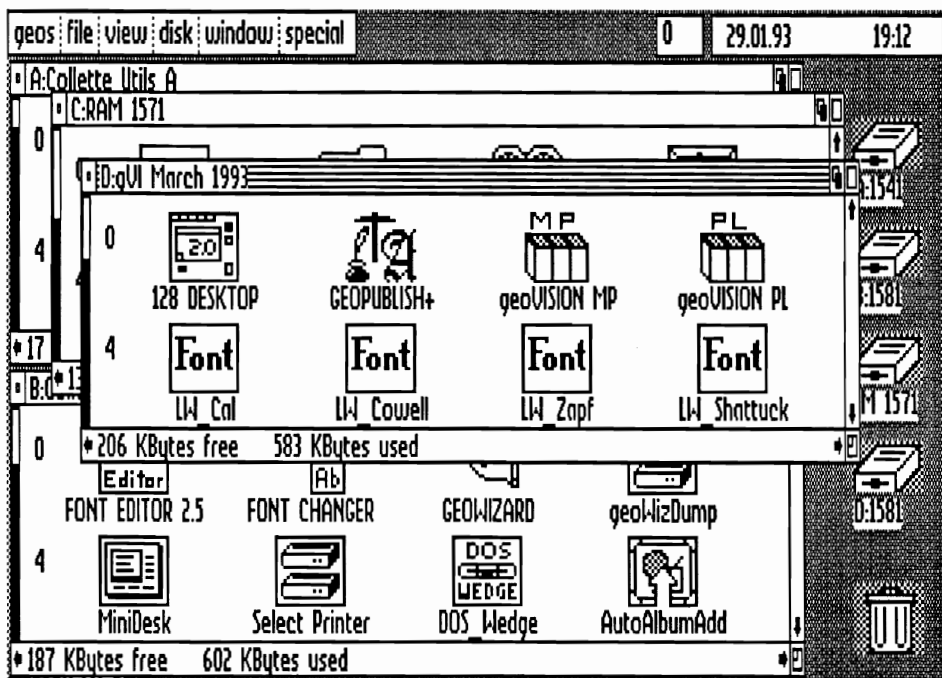
At this point you see a window with the various disks files icons arranged in rows of four across. So far familiar. The window contains a few handy new 'window' tools. Starting from the upper left and working clockwise around the edge, is the close icon. Clicking this will close the disk. Clicking this and holding the mouse button down will close the folder (if you're in one) and then close the disk. Then you have the disks drive letter, A, B, C, and D, (Yes! I said D. TopDesk supports four drives.) the disk name, and if you're in a folder, each



folders name, (in order) to the active one. More on this later. Be aware though, an REU is required for three to four drives. The next button is the 'Front to Back' button. This moves the current (active) window behind any other window that may be underneath, and activates the next one. Yes! TopDesk can have another window (disk) open at the same time. In fact with TopDesk, you can have all four windows open at once. The upper right button is the 'full page' icon. It makes the window full screen size when clicked on. Click again, and it'll go back to where you had it earlier. Along the right edge are two scrolling arrows. The up arrow will scroll the listing up one row at a time. The down arrow will scroll down the listing one row. Of course the cursor keys work too. Holding the mouse button down on an arrow will scroll the complete window to the next set of files either next or previous to what you were viewing.

The button in the lower right is the 're-size' window button. Across the bottom are the 'KBytes free' and 'KBytes used' listings, (from the view pull-down menu you can select whether to have this show KBytes or Blocks.) and another set of scrolling arrows for horizontal scrolling. The white and black line along the left side is the fuel guage. This tells you (at a glance) how much space you have left on the disk, or have used up.

You'll also notice that there are small numbers inside the window at the beginning of each row of icons on the left. These are telling you how many icons in each row there are to help you count files. The multiple lines at the top to the right of the disk name tells you if that window is active. It will be blank if not. (no lines) You also click here to move the window around the screen.



With this desktop there's no need to get used to new icons, memorize new commands or remember file names. Each file is the GEOS file icon that we're all familiar with. Nothing has changed here except for the addition of a new icon. A file folder. This is where we find some power. Folders (sub-files) are somewhat like partitions. You can create a folder, open the folder and copy files into it, and close the folder moving back to the original window. Folders are best used for organizing your disks. You can place files of like kind in one folder while having all the files of another type in another folder. For example, all your Fonts in one folder, and all your Desk Accessories in another. You may have up to 63 folders on a disk at a time. And, you can place folders within folders. That's called nesting.

To open a folder just treat it like a file, by double clicking on its icon. The window will then change to show the contents of that folder. Folders also make it much faster when you want to copy the contents to another disk. Just copy the folder icon to another disk in the same way you'd copy any file. Of course you must have at least two windows open and the source window must be active. This will copy each and every file inside the folder to the destination disk. Be aware though, you can't copy a folder to a disk that already has a folder with the same name. This precaution keeps you from overwriting a folder of GeoPublish files named Pub Work with a folder containing Laser Writer fonts named Pub Work. Since this function really only copies individual files and hides them in a folder, you'd erase the GeoPublish files. Because of this, you also can't duplicate a folder. Even if a folder isn't open, the files are still there and accessible. For example, if GeoPaint is in a closed folder, and you open a GeoPaint document in the main window, it will load as normal.

Something that I missed right away is that with TopDesk you no longer have the border area for files. No more organizing files by placing them on the border and then moving them to another page. TopDesk allows you to swap locations of

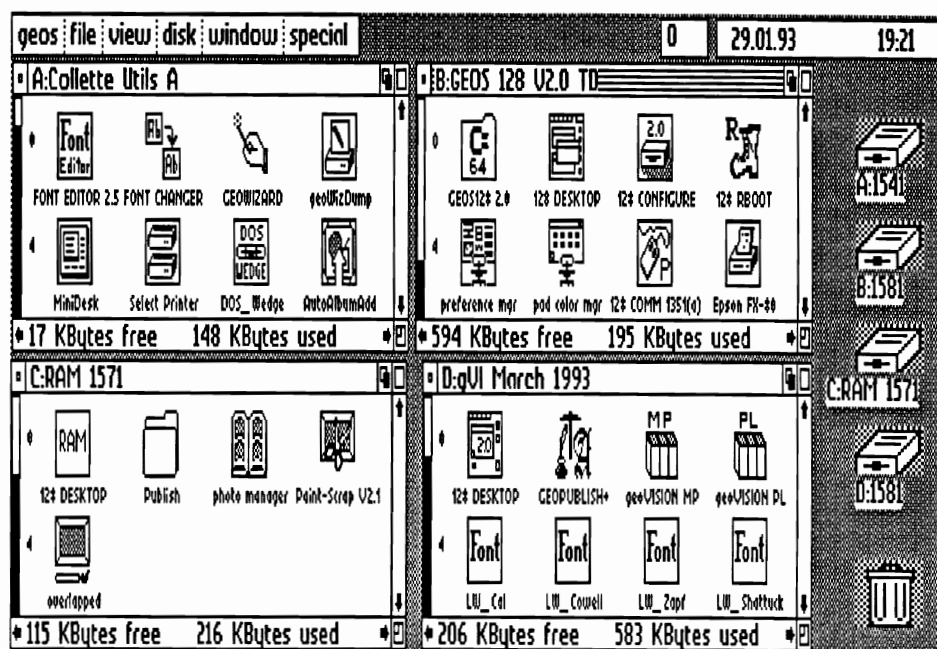
files that are in view in the window, the usual way. But, to move files from one end of the directory to the other is a little more tricky. You can continually swap files till you get them to the position you want, but that makes for quite a bit of scrolling. A TopDesk solution is to select the files you want to move to the beginning of the list and then click on **presort** in the file pull-down menu. This will move the selected files to the front of the directory listing. This I feel, is quite limited and doesn't really give you much organizational power as the GeoWorks' DeskTop does, with the use of the border. TopDesk is lacking in this area. But, that is where you'd want to begin using folders to tidy up your disks.

The addition of a fourth drive is brought about by using the file **InstallDriveD**. It must first be installed. Drive D must already be set up/hardwired as device 11 to do this. For those that have trouble with having the wrong device number and can only software it, the documentation covers this quite well. Run the install file and your fourth drive will show up at the right with the other drive icons. This file is an **Auto Exec** and must be placed on your boot disk (after CONFIGURE) to allow for future automatic setup when booted.

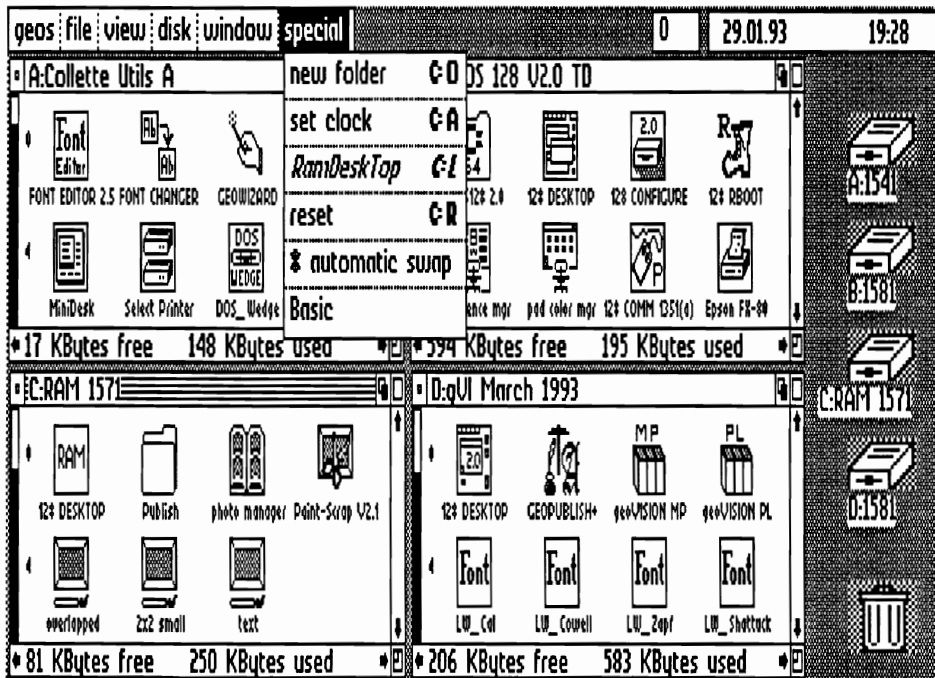
Another limitation (but not for long) is that Applications cannot be run from drives C or D unless you have selected **automatic swap** in the **special** pull-down menu. Although copying of files can be done on all four drives without swapping the drives (C or D with A or B) like the DeskTop, any work with applications, the drives will be swapped to use them. Just select **automatic swap** and you won't have to worry about this. If you do need to manually swap the drives, simply click the mouse button on the drive you want to swap and hold down the button to get the ghost icon, and then deposit it on the drive you'd like it swapped with.

And speaking of Applications, When you load an application that runs in a mode other than what you are currently in, TopDesk automatically switches to that mode without the distracting dialog box asking if you want to switch modes.

Another time saving feature that solves another limitation is that of **RamDeskTop**. You must have an REU to use this function (of course). It creates a file on your REU to save and later rewrite the TopDesk screen when you return from an application. This is also found in the **special** pull-down menu. When you select this, it will create the



FEATURE



RamDeskTop file on your REU. It also saves the current window configurations so you won't have to continually (upon returning from applications) reopen and resize the disk windows. This saves you time and is much faster. For those that do understand how an REU works, the use of RamDeskTop disables DMA MoveData, but there is really no visible loss of speed here.

A timesaver with TopDesk is that you can now open windows with just a press of the function keys. F1 is drive A, F3 is drive B, F5 is drive C, etc.

Almost all of the familiar DeskTop keyboard shortcuts are supported by TopDesk. As with DeskTop, the shortcuts are displayed in the pull-down menus next to their commands. There are additional shortcuts such as the FKeys for opening drives (mentioned in the previous paragraph) and pressing the Commodore key down when selecting those same FKeys will invert the drive icon and attach a ghost icon to your cursor for swapping. If you have many windows stacked on top one another, pressing the Commodore key and the letter B will de-activate the current window, and move it to the back and activate the next

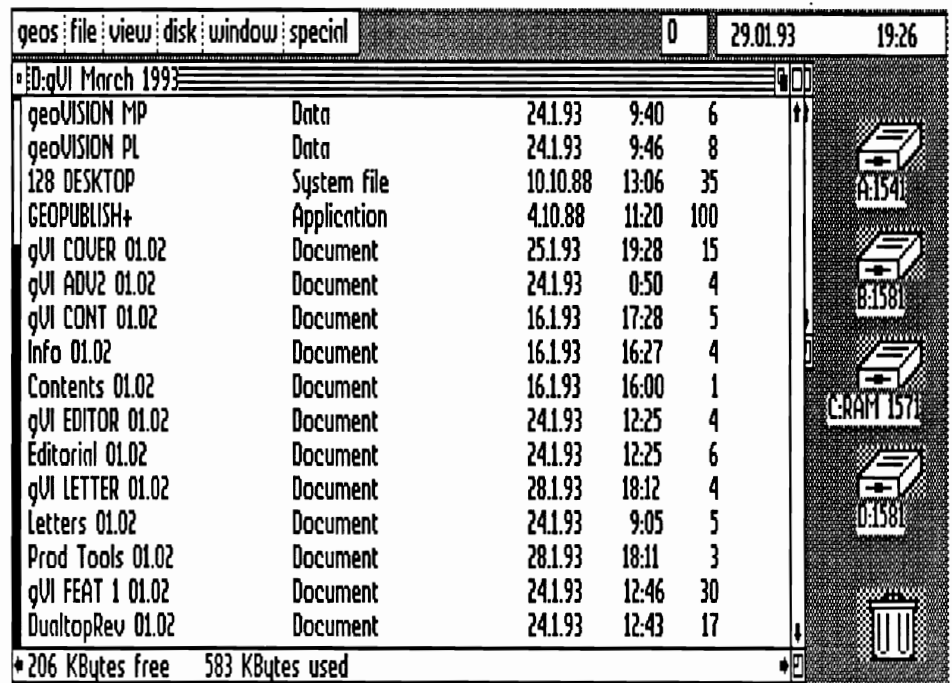
window. The Commodore key and the back arrow will close the active window. And, like the DeskTop, the Commodore key and any number key from 1 to 0 will select the corresponding file in the active window.

Another difference is that there is no longer a pull-down menu selection for changing the input and printer drivers.

To install a printer driver, just double click on the relevant file. As for an input driver that has not yet been installed, (when you have no cursor control) the documentation tells you how to do this. It's quite easy though.

There are a few things to watch out for. Very few, and some are only using a little commonsense. The documentation comes on the disk and answers pretty much every question imaginable. (Good job Dave.) One thing to know, is the power of the delete function. Of course, it will erase any and all selected. If you've selected one or more folders, Watch out! All the folders files will be trashed. And, any folders and their files within that folder. TopDesk does NOT let you retrieve files from the trashcan.

If you use a batch copier at time of boot up, and have folders copied too, you'll find that all the files will be copied but the folder will be copied as a separate file and will be empty. The batch copiers don't know how to handle this type of file, keeping the files together inside. Dave has written a program called FoldFlag that corrects this. It is an Auto Exec and must be placed after your batch copier. It will 're-link' the files with their proper folder.



Also, if you want to place files in folders on your boot disk, it is best to create the folders on the boot disk, and then copy the files into them. Problems occur if folders are created on other disks then copied over to the boot disk.

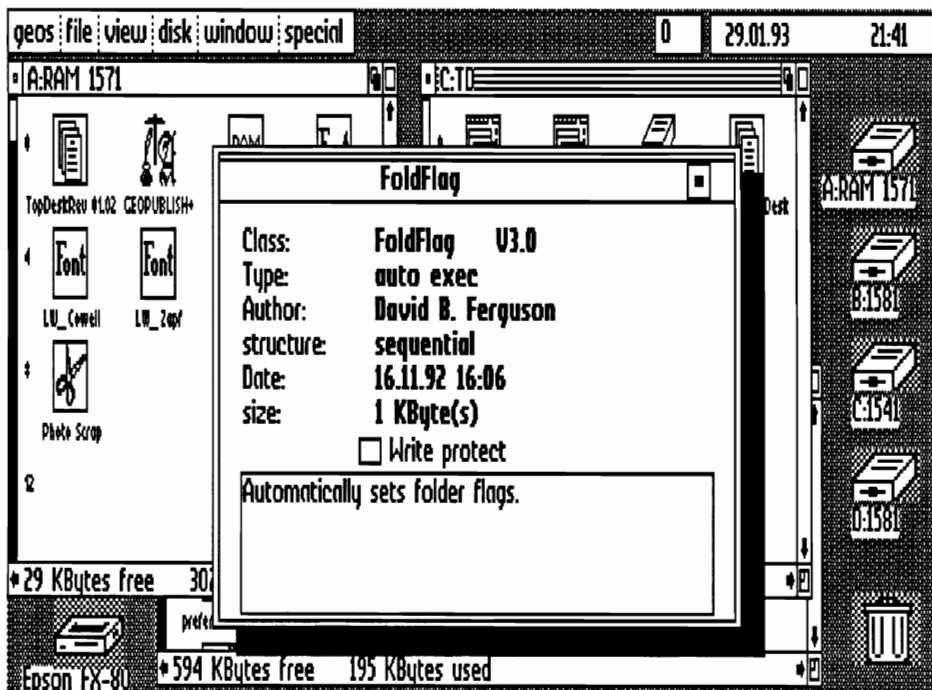
To use TopDesk, you follow a few very easy steps to install it. One of them is renaming TopDesk to DeskTop. Once renamed, you need to copy this over any disk containing the GeoWorks version, DeskTop. This is so there are no problems looking for and finding the DeskTop when leaving any other programs.

One missing feature, these days of larger RAM expansion and hard drives, is the use of partitions. TopDesk has no ability to handle these at all. You've got to understand though, TopDesk was written like the DeskTop, to replace it. The power of four drives and the new windows sure outway this. Maybe this will be the next version of TopDesk. I hope! If you prefer icons, want access to more drives, and would like to view those additional drives at the same time, TopDesk is definitely for you.

Since TopDesk was received too late to run an advertisement, here is the ordering information you'll need. The price includes shipping and handling but California residents must add their STATE sales tax. I'm sure that Canadian orders must be in US funds, although Dave did not mention this in his advertising material. For Purchases outside of the United States and Canada, send your orders to the GEOS Users Club in Germany. I'm not sure what their price is, so you'll need to write to them first for more information. □

TopDesk \$19.95
Quincy Softworks
 9479 E. Whitmore Avenue
 Hughson, CA 95326-9745

GEOS USER CLUB
 c/o Thomas Haberland
 Postfach 667
 5100 Aachen, GERMANY



QWIK TOP



WormDesk

YES! There's More

by Grady E. Brown

QwikTop v3.1, by John F. Howard is a shareware desktop alternative that can be found on Q-Link. It's quite different than all the others. The screen contains eight sections, (pages) showing you seven pages and the border. This allows you to view 56 file names plus eight on the border at one time. To view more, just click on the arrows and you'll be presented with the next set of seven and border.

QwikTop has no date and time, or any keyboard shortcuts, but does have some of the regular pull-down menus.

At the base of the screen are the drive icons, which can be swapped just like DeskTop.

Another Shareware desktop alternative

that can be found on Q-Link, is WormDesk v.0 by Payton W. Snider II. WormDesk is an odd name, and is quite different than even QwikTop.

Payton seemed to want to have everything at a glance when writing this one. You are shown your printer and input drivers, the date and time, disk type, blocks free, bytes free, REU size (if applicable), and the three drive icons all at a glance. A nice feature.

The filepad looks as if it is hung on a brick wall, and lets you view 13 filenames at a time, by specific file type.

WormDesk contains 27 keyboard shortcuts which include four function key commands. All the regular pull-down menus and commands are present except copy for files.

All three drives are directly accessible by just clicking on its icon. WormDesk will swap for you. But, you must be careful when swapping drives from within an application or desk accessory. You may lose a drive when you exit back to WormDesk. Just remember to return to the drive that you originally came from when you ran the Ap. or D.A. □

USER GROUPS - BBS's - PUBLICATIONS

This column will be our forum to tell you of GEOS supported User Groups, Bulletin Board Systems, and Publications. First we will tell you about newsletters we've received over the last two months. What follows is a listing of those Groups, BBS's and Publications that have partial to full support of GEOS. If you're a club officer, BBS SYSOP, or Editor that promotes GEOS and have not yet been listed, be sure to fill out & mail the coupon (or a copy), for your FREE publicity. Please supply an SASE when writing to any of these people for information, as many are run by volunteers. We will update this list frequently and include it in our master GEOS Directory of user Groups, BBS's, and Publications. Send us your newsletter today, to be reviewed and listed here.

NEWSLETTERS RECEIVED

Since the initial announcement of geoVISION International, we've received some very good newsletters and sources of GEOS information.

THE Lucky Line MAGAZINE from Louisville Users of Commodore of Kentucky. I received the Spring/Summer 1991 and Fall 1991/Winter 1992 together and was impressed with the ten and twenty pages of laser printed material they contained. In the first issue there was a phone interview with Mark Fellows, the founder of Creative Micro Designs. And, there was a great review of the HandyScanner64. In the later issue, Dale Sidebottom writes two reviews of RAMLink and its uses.

DISPATCH DISK from Southern Districts Commodore Users Club Inc. Their March 1991 issue contains a technical review of Schnedler Systems TURBO MASTER CPU, a speed up cartridge for the C-64 that even works with GEOS.

Queens Bits Newsletter of The Queens Commodore Users Group who celebrated their 10th Anniversary last October, contains a brief announcement and description of the new Commodore MPS-1270 inkjet printer that is now available for all Commodore computers. I just wonder how many Commodore users really know that this is available.

Commodore Network is a power packed Commodore magazine in Australia that contains every aspect of computing. And, I DO mean EVERY. They have some VERY knowledgeable writers on staff and contain quite a bit of GEOS coverage. The three issues I've seen are from 16 to 20 pages in length and each issue has regular columns and authors. It's well layed out and easy to find your favorite monthly column. Of course mine is GeoPage. Their

first issue has a GEOS programming article called geoCODE. Each issue runs many GEOS PD software advertisements, but their latest issue is the best, with the GeoPage column changing to GeoZ. A great GeoWrite article; a full page review of none other than, geoVISION International; and a two page review of RAMLink and RAMDrive.

Front Range Commodore Club must contain a sizable GEOS following since the front page is devoted to what happened at a recent meeting. GEOS demos of course.

PCG Newsletter is a well printed 12 page publication with a regular GeoSig column by John Blasdell.

The EIGHT-BITS CLASSIFIED ADLETTER although being a source of ads for everything imaginable for the Commodore, does contain some very interesting articles and reviews. Since it's printed with GeoPublish, it has some GEOS material such as a geoSHELL review.

USER GROUPS

Front Range Commodore Club meets at the Boulder County Fairgrounds Office Building at 7:00pm every first Thursday. Their newsletter is 'Front Range Commodore Club - Serving Northern Colorado Commodore Users'. For more information contact the group at P.O. Box 272 Niwot, CO 80544-0272 U.S.A.

Salisbury Compute meets at 7:00 pm on the first Wednesday of the month. Their newsletter by the same name is published monthly. For more information call (704) 637-0407 or write 280 Deal Creek Drive, Salisbury, NC 28144 U.S.A.

Pittsburgh Commodore Group meets the third Sunday of each month from September through June at the Mellon Science Hall of Duquesne University in Pittsburgh, PA USA. Neal Kushner is waiting to give you more information at P.O. Box 16126 Pittsburgh, PA 15242 U.S.A. or (412) 828-3505. PCG Newsletter is published 10 times a year (Sept. - June) and PCG BBS is 24 hours a day, 300-2400 BPS, 8-N-1. (412) 434-5483. Sign on to BBS and request two free issues of PCG Newsletter.

Topeka Commodore Computer Users Group meets monthly on the last Tuesday from 7:00pm to 9:30 pm at the Pizza Hut 3406 S.W. Topeka Avenue; Topeka, KS USA. For more information contact Jim Wilson at either P.O. Box 8439 Topeka, KS 66608-8439 U.S.A. or (913) 235-8452. TCCUG puts out a monthly 10-12 page newsletter 'Commodore Users Newsletter', and runs a 300 to 1200 baud BBS called 'The Dog House'. Settings 8-N-1. (913) 357-0683.

Fresno Commodore User Group/64UM meets Saturday at 9:00am. Their BBS is 64UM BBS and supports 300 and 1200 baud. (209) 226-5313. The Interface, published six times a year is their newsletter. To get in touch with them for more information, write them at P.O. Box 16098 Fresno, CA 93755 U.S.A., or call them at (209) 224-4163.

Longview Computer User's Group meets the first Tuesday of each month at 7:00 pm. Their monthly publication is the LUGNOTES and they have a BBS called LCUG BBS accepting 300 - 2400 baud rates. 8-N-1. (903) 236-7434. for more information write to Eddie Green at P.O. Box 150071 Longview TX 75615-0071 U.S.A.

Lucky: The Louisville Users of Commodore in Kentucky meet monthly at

USER GROUPS - BBS's - PUBLICATIONS

the Community Room of the Jefferson Mall at 7:00 p.m. on the second Tuesday of each month. For GEOS users there is a S.I.G. called geoCORPS which meets approximately once a month. LUCKY produces 'The Lucky Line Magazine' and has a 24 hour 300-2400 baud BBS for paying members. New members are always welcome. For more information on the main group, geoCORPS or their publication contact: LUCKY LINE Magazine; c/o Dale Sidebottom; P.O. box 0972; New Albany, IN 47151-0972 U.S.A.

Southern Districts Commodore Users Club, Inc. Meets every 3rd Wednesday of the month at 7:30 pm at the house of the club President, Mr. R. Cloosterman. 1 Birubi Way Morphett Vale, South Australia 5162 AUSTRALIA. They have GEOS demos approximately every second month, and have a good P.D. library. Mail members are most welcome. The group publishes Dispatch Disk 11 times a year.

South Australian Commodore Computers User Group, Inc. Meets the first and third Monday each month at 7:30 pm at the North Adelaide Primary School on Tynte Street in North Adelaide. For more information contact John Wright at P.O. Box 427 North Adelaide, South Australia AUSTRALIA. There is a small group of GEOS enthusiasts who exchange information at each meeting. They produce a semi monthly publication named, **Bits And Bytes Newsletter**.

GE-OZ is a by-mail group only consisting of Australian members of geoCLUB of the United Kingdom. Contact Peter Hunt at 70 Betula Street Doveton, Victoria 3177 AUSTRALIA for more information. He circulates 11 issues a year of **geoNEWS** (U.K.)

The Queens Commodore Users Group meets at the Vietnam Veterans of America Sgt. Edward J. Brown 74-01 Cypress Hills Street Glendale, NY 11385. Or, you can write Jack Donato at QCUG P.O. Box 129 Queens, NY 11417 U.S.A. for more information. They produce a monthly publication called **Queens Bits**.

BBS's

BBS Enterprise is a FREE Star Trek oriented bulletin board with GEOS message and transfer areas. The SYSOP is Ken Nakatsu (Captain Kenby). Set your parameters to 8-N-1. (503) 245-8735 2400/1200 baud, running OMNI 128. Commodore and ANSI.

PUBLICATIONS

The EIGHT-BITS CLASSIFIED ADLETTER is a tool for finding, selling and trading of Commodore computer Software, Hardware, ShareWare, Books and Information. For more information write to A.W.M. MICRO-MEDIA, P.O. Box 3963 Denver, CO 80239 U.S.A.

Commodore Network is a monthly publication with a GEOS column. For

more information contact the Publisher/Editor Warren Naismith 9 Wadeson Street Cobram, Victoria 3644 AUSTRALIA.

LOADSTAR MONTHLY: LOADSTAR is a software subscription produced especially for Commodore 64 computers. 3-Months for just \$29.95, or 12 months for \$89.95. Call for foreign prices. SOFTDISK PUBLISHING, P.O. Box 30008, Shreveport, LA 71130-0008 U.S.A. 1-800-831-2694, Ext. 2005 There is also a quarterly edition for the Commodore 128.

COMPUTE: One year (12 issue) subscription for \$9.97. Canada and elsewhere, \$25.94. Single copies are \$2.95 in U.S. Specify 'Gazette' Commodore 64/128 magazine edition. COMPUTE, P.O. Box 3244, Harlan, IA 51593-2424 U.S.A. 1-800-727-6937. Ask about their disks too.

Free U.G.B.P. List Coupon

Group Name: _____

GEOS Meeting Day - Time: _____

Address: _____

City - State: _____

Zip (Postal) Code - Country: _____

Info Contact (Name - Phone): _____

Publication Name: _____

Issues Per Year: _____

BBS Name: _____

BBS Number: _____

Baud Rate(s): _____

Term. Params.: _____

Comments: _____

Please complete ONLY if your User Group, BBS, or Publication contains GEOS support. For Publications, please send a copy.

geoVISION™
INTERNATIONAL
BRINGING THE WORLD TOGETHER WITH GEOS

Mail to:
geoVISION International
816 S.E. Polk Street
Camas, Washington
98607-2240 U.S.A.

CLASSIFIEDS

These are FREE classified ads for the personal & commercial use of subscribers only. You may list software, hardware, books & magazines 'For Sale' or 'Wanted' here. Ads about User Groups, BBS's, and Publications should use the coupon in the column on the previous page. Your ad will run in the next available issue until either you ask for it to be pulled, your subscription runs out, or it's bumped off this listing. For example: The first ad will be placed on top. Each new ad will be placed on top of the previous one and will push the other ads down. When new ads are received and the allotted space is full, the oldest ad(s) will be dropped off the page. This is to give everyone a chance. RULES: All software must be Original with its original manuals (no copies or photocopies). Anything may be advertised as long as it is directly related to GEOS. Please, nothing over \$250.00 and no more than 30 words in length. Remember to list how to contact you in your ad copy. Fill out the coupon below or a photocopy for your FREE ad. Don't delay, do it today.

Cut Sheet Feeder for Panasonic 1624 printer. New in Box \$25.00.
 Gary Koerner 22614 Braken Carter Katy, TX 77449 U.S.A.



FOR SALE This space is available for your use in clearing your bookshelves of those old computer books no longer read.

The World of GEOS HandBook and Disk This Publication is to help you get the most from working with, and using GEOS. The Disk contains Public Domain GEOS programs. The HandBook is folded and saddle bound to A4 size, for A\$10.00 plus A\$5.00 P&H, from JMV Grafix P.O. Box 635 Blair Athol 5084 South Australia. Cheques Payable to Jane M. Jones

GEOS Files for Aussie users. File Library, 14 D/S disks, 800+ files \$50
 GEOS Fonts (some original), 10 D/S disks \$40. Individual disks \$5.00 each. Stamped envelope/banknote with enquiries. Jeff Carey; Box 146 GPO; Adelaide, SA 5001 Australia.



REFERENCE GUIDE For Sale. Have one copy of The Official GEOS Programmers Reference Guide. \$15.00 (US) plus \$3.00 S/H. Grady Brown 816 S.E. Polk Street; Camas, Washington 98607-2240 U.S.A.



'Toons! Lots of Commodore GEOS clip art cartoons available. Each disk has at least one font and approximately 50 cartoons. Send \$3.50 American (refundable with your first order) to: Cartoon Sampler; 7048 Michigan Street; Elwell, MI 48832 U.S.A. for catalog.



WANTED: Your Classified advertising. Sell your GEOS programs that you've put on the shelf some time ago and haven't touched since.

Free Classified Ad Coupon

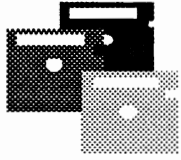
Please complete ONLY if your ad is for GEOS related merchandise. 30 words maximum. First two words will be BOLD.

geoVISION™
 INTERNATIONAL
 BRINGING THE WORLD TOGETHER WITH GEOS

Mail to:
 geoVISION International
 816 S.E. Polk Street
 Camas, Washington
 98607-2240 U.S.A.

- FOR OUR RECORDS -

Name: _____
 Address: _____
 City - State: _____
 Zip (Postal) Code - Country: _____
 Telephone Number: _____



geoVISION _INTERNATIONAL_

THE DISK

So you don't have access to the major networks? Save downloading time and money by ordering GEOS files on 5.25" (1541 formatted) disks. Each disk will be filled, both sides, containing various files from the major networks.

**DIRECT FROM
THE
NETWORKS**

**FONTS
APPLICATIONS
DESK ACCESSORIES
DRIVERS
AUTO EXECS
CALC TEMPLATES
CLIP ART
FILE TEMPLATES
& MUCH MORE**

SINGLE DISK RATES (U.S. Funds)

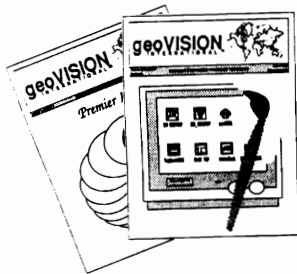
U.S.A.	\$5.50
Canada/Mexico Air	\$6.50
International Air	\$7.50

DISK SUBSCRIPTION RATES (U.S. Funds)

U.S.A.	\$30.00
Canada/Mexico Air	\$39.00
International Air	\$45.00

Payment must accompany filled out subscription coupon.

Washington residents must add your local State sales tax.



geoVISION _INTERNATIONAL_

THE MAGAZINE

BE A PART OF gVI

**SUBSCRIBE NOW
AND GET:**

**HOW-TO ARTICLES
PRODUCT REVIEWS
PROGRAM SOURCES
TIPS**

**FREE 30 word classified ad
with your paid subscription!**

**Save up to 12.5% off
the single issue price**

Keep Up To Date On GEOS Information!

SINGLE ISSUE RATES (U.S. Funds)

U.S.A.	\$4.00
Canada/Mexico Air	\$5.00
International Air	\$6.00

SUBSCRIPTION RATES (U.S. Funds)

U.S.A.	\$21.00
Canada/Mexico Air	\$27.00
International Air	\$33.00

**Print original banners, poster, and greeting cards in GEOS. Make mail labels like a pro!
Get a disk with GeoPRINT on the front side and GEOLABEL (and SUPERBOX) on the back,
All for just \$20.00!**

(If you already have purchased one, the other will only cost \$12.00.)

GEOPRINT C-64/128 40 column only.

Side 1

You control your printout down to the last pixel of resolution. Check out these features...

- ☆Print banners up to 12 pages in length.
- ☆Print posters, vertical AND HORIZONTAL!
- ☆Print greeting cards with up to four sides.
- ☆Convert a geoPaint document (part or whole) into a GIANT (8X) or Mini (4X) poster!
- ☆Compatible with GEOS 2.0 Paint Drivers.

GEOLABEL Please specify 64/128 40 column or 128 80 column only version.

Side 2

A professional label making program. "...with the look and feel of a true Berkeley SoftWorks product." geoJournal magazine.
Check out these features...

- ☆Glean label data from geoFile or create your own data using geoWrite.
- ☆Edit, load, and save label designs in a 4" x 2" or smaller area (8" x 2" on the 128).
- ☆Up to 18 fields of information per label, positioned anywhere with the click of a mouse.
- ☆Append and/or prefix data to any field.
- ☆Use up to nine fonts and any style (including reverse) all at once...6K buffer for larger fonts.

Make checks or money orders payable to Dale Sidebottom. Mail to:
SoftSide Supply
P. O. Box 0972
New Albany IN 47151-0972

geoVISION
INTERNATIONAL
BRINGING THE WORLD TOGETHER WITH GEOS

816 S.E. Polk Street
Camas, Washington
98607-2240 U.S.A.

ADDRESS CORECTION REQUESTED

Please Rush
Dated Material