

EXTRA !!! EXTRA!!! EXTRA !!!

WHEELS - the all-new operating system upgrade for Geos 2.0 designed and created by Maurice Randall, wheels 64 was known as "project g" during the last several months of development. this is the first major upgrade to the Geos operating system since 1988. here's a brief rundown of the major highlights of this new system:

Dashboard 64 this is the new replacement for the desktop. with the dashboard, you'll navigate around your system like you've never been able to before. open up as many as 16 windows to any partition or subdirectory you want. unlike the desktop, the dashboard knows your CMD devices.

Toolbox 64 forget all those configure files you had to put up with before. the toolbox will let you boot from any setup you can put together. nothing is more simple than booting up into the wheels environment.

Makesysdisk afraid your boot disk will someday get damaged? wheels comes with this nifty utility that allows you to create your own boot disks or bootable partitions on your CMD devices.

The wheels operating system the heart of this new system lies in the considerable modifications and enhancements that went into the development of the operating system kernel. included in this are a total of 14 new disk drivers designed to better handle all the popular disk drives and ramdisks. software and hardware requirements commodore 64 or 128 (in 64 mode) 1541 or 1571 for initial installation Geos 64 v2.0 (wheels is sold as an upgrade) original Geos boot disk for the installation ram expansion (all popular types are supported)

Wheels 64 is now in its final development stages. documentation is in the proofreading stage. shipping is expected to begin sometime in February. work on the 128 version will begin soon. Get ready to rev up your 64!

Wheels is coming soon...

Advance orders for wheels 64 are now being accepted price: \$36 plus shipping and handling* (* add \$4 for North American addresses or \$6 for international) (includes installation disk and owner's manual) To place an advance order send a check or money order in U.S. funds to:

Maurice Randall, Click Here Software Co.
P.O. Box 606 Charlotte MI 48813, USA

Page	Item
2	Library Review Sharon Chambers
3	E-Mail In-Box f.cassidy@virgin.net
5	Adding Today's Date Sharon Chambers
6	A Few Good Tips Colin J Thomson
8	Don's Digest Don McMananey
9	Camels Pte Ian Swain R'td
9	Buying a Scanner Peter Hunt
10	1570 Device Switches Dave Elliott
11	Random Access Dale Lutes
12	Graphics Peter McGuinn

Published by:-

Frank Cassidy
55, High Bank Road
Droylsden
Manchester
M43 6FS

February Library Review



Sharon Chambers
41, Albert Street,
Crewe,
Cheshire
CW1 2QD
Tel/Fax: 01270 - 215689

Hi, and welcome to the February review. For anyone thinking of having a change to their normal letterhead, then do we have two disk's for you. Disk 552 & 553, are full of ideas to keep you going well into 1999.

Thank's this month goes to the following members: Peter McGuinan, Dave Elliott, Dave Andrews, Peter Hunt & Jeremy Stoke.

We start off with the following....

geoCLUB DISK 552 & 553

Thank's goes to Peter McGinane, for these two disk's. As I mentioned above, these two disk's, are for anyone wanting a new look to their letterhead. Disk 552, is full of clip-art, to clip and make into letterheads. They are all cartoon type picks, and are of a very good quality. Disk 553 has some ready made letterheads, all you need to do is to add your name and address. All files are geoPaint file's, so are very easy to use. Just print them out and use when ready. So go on, give yourself a change.

geoCLUB DISK 554

The next 6 disk's are from Dave Elliott. He's converted a set of graphic's disk's called the BRE.Series, to geos (photo albums). All are very good, and I don't think we've had them in the library before. So enjoy.... On this disk, we have: Art-1, Art-1a, Art-2, Art-3, Art-3a, Art-4.

geoCLUB DISK 555

On this disk, we have: Art-4a, Art-6, Art-6a, Art-7,

Art-7a, Art-8.

geoCLUB DISK 556

On this disk, we have: Animals-1, Animals-2, Animals-3.

geoCLUB DISK 557

On this disk, we have: Animals-4, Faces-1, Faces-2

geoCLUB DISK 558

On this disk, we have: Art-5, Art-5a, Art-5b, Art-3, Art-3a, Art-8a.

geoCLUB DISK 559

And on this last disk, we have: Art-13, Clarice M, Matt's Viper.

geoCLUB DISK 560 & 561

These next two disk's are from Jeremy Stoke. He's sent us in all the information you might need to grow most types of vegetables. So with the spring sowing not that far off, this maybe just the help you need, to get better results.

geoCLUB DISK 562

These next two disk are from Dave Andrews. On this disk, are a number of help files for Word Writer 6.

geoCLUB DISK 563

On this disk are some more help file's, which include: Big Blue Reader & SpeedScript; These is also a mix of Font files and some clip art as well.

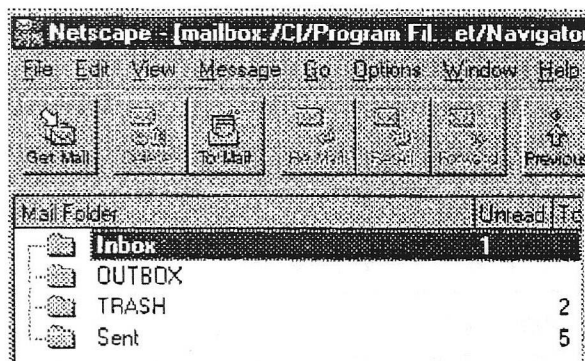
Video Shop Disk 23 & 24

Some more graphics for using with the Video Shop program. Please note: in December, I mention that I had not been able to load in the Video Shop program, from a C64. I've now been given the information. All you need to do is to load in +VSM and that should let you load in in 64 mode. I've also written out some basic instruction for using Video Shop. It's a geoWrite file that I will add to both disk's. Thank's to Peter Hunt for this info.

Well that finishes this months review. I hope you can all find something here to keep you going until next month. Disk are back to the normal price of 2 disk numbers for £1.30. If anyone is looking for Hardware or Software, write to me for a For Sales List (please enclose a SAE). I've had a number of members write with list and can pass on a copy to anyone interested. If you are also thinking of selling off, some of your software or hardware, send me a list (on disk please) and I will pass it on for you. Well that's it for now, see you next month....

Sharon

From the 'IN-BOX'



I had a letter from Roy Beynon. wrote to me he said being a welshman that Gordon Turrall should have included the Welsh in the poem Keep the Flag Dec.Issue.

It's For the English, the Welsh, the Scots and the Irish.

Maybe you could add a notice to say I hope we did nto offend any Welshman.because that was never

our Intention.

I have wrtten back to Roy & said hope he will forgive us. But the ironic thing is that Gordon Turall lives in New South Wales.

I will included a copy of his letter to you next time & post Roy's letter onto Gordon as well.

Reply :- I'd have put the omission down to poetic licence, at the end of the day a poem has to rhyme and if the author cannot find anything to rhyme with Welsh then what is he to do ?. It could be said that it was a little provocative to include such things in geoNews but I did included it mainly because I too am very partiotic which is what the poem is, one mans vbiew and the way he can best express it . I too believe that the Oz flag should remain with the Union Jack in the corner. A lot of good men died for that flag, this we should never forget. When I was a lad ANZAC was a by-word for bravery .

Subject:

Journal re-prints

Date: Mon, 12 Jan 1998 15:12:20 +0000

From: <jkindon@jkindon.demon.co.uk>

To: f.cassidy@virgin.net

Greetings Frank

After reading the Editors Comments in Jan's Journal I thought. I'd offer assistance in doing this, my having a scanner also.

My experience in using OCR software, both Textbridge and Caere OCR have been very disappointing in the OCR mode, leaving a file with so much unrecognised text as to make correcting it all unworthwhile, it would be easier to re-type the whole damn thing, so I tend NOT to use OCR at all, and all this is with normal printed text and NOT handwriting which is not likely to be recognised at all.

I have found that a page scanned and saved as a graphic works out OK, the down side is, it's impossible to make any alterations to the text, the file being a graphic of course, but it will take re-sizing without any distortion etc of the text and this way may be an advantage due to graphics being on some of the pages, anyway Frank let me know if I can help in at all.

I think that what I'll do is have a go at making a copy of January's Journal and if I'm successful I'll post it off to you for a looksee.

Take it easy Frank we are QRT.

PS I've made a copy of Jan's Journal and it'll be in the post for you to have a look at and see what you think.

Regards Jim

Reply :- Thanks for the offer of help Jim. I thought that scanning text into Publisher from old issues of geoNews would be much easier than typing everything, the idea being that a number of members have expressed an interest in articles that may be of interest which were published many issues ago.

I have had limited success. I have used OmniPage, which came with the scanner for OCR. I have discovered that if the text to be scanned is of good quality or the original print is a large font then it goes in almost 100%. If it isn't then it usually goes in at something like 1%. Certainly I have found that with magazine articles. Check out Page 5 this was OCR'd (if there is such a word). We will have to see how it goes.

Regards FRANK

Subject:

GEOClub Statistics

Date: Mon, 5 Jan 1998 01:10:14 +9:30

From: "GaelyneGasson"

<gaelyne@videocam.net.au>

Organization:

Videocam Services

To: f.cassidy@virgin.net,

phunt@melbpc.org.au

Dear Frank and Peter,

Our service was unavailable to the outside world from approximately 19 Dec through 30 December. The cause of the problem was unrelated to our business, or our Internet provider, as the problem was further upstream from us. Unfortunately, this had an

impact on the your web site statistics for this month, but luckily service interruptions like this happen very rarely.

Sincerely,

Gaelyne R. Gasson

VideoCam Services Web Administrator

<http://videocam.net.au/vcswww.html>

videocam@videocam.net.au

Web Server Statistics for GEOClub

Program started at Sun-04-Jan-1998 17:58 local time.

Analysed requests from Wed-13-Aug-1997 04:18 to Sun-04-Jan-1998 16:06 (144.5 days).

Total successful requests: 827 (56)

Average successful requests per day: 6 (8)

Total successful requests for pages: 827 (56)

Average successful requests for pages per day: 6 (8)

Number of distinct files requested: 1 (1)

Number of distinct hosts served: 589 (43)

Number of new hosts served in last 7 days: 41

Total data transferred: 2,970 kbytes (214,200 bytes)

Average data transferred per day: 21,050 bytes (30,600 bytes)

(Figures in parentheses refer to the last 7 days).

Monthly Report

Each unit (x) represents 20 requests for pages, or part thereof.

month: pages: #reqs: kbytes:

Jan 1998: 47: 47: 176: xxx

Dec 1997: 242: 242: 873: xxxxxxxxxxxxxx

Nov 1997: 496: 496: 1776:

xxxxxxxxxxxxxxxxxxxxxxxx

Oct 1997: 39: 39: 137: xx

Sep 1997: 0: 0: :

Aug 1997: 3: 3: 9: x

This analysis was produced by analog2.11/Unix.

Running time: 12 seconds.



Adding Today's Date

By Sharon Chambers



Do you use geoWrite 2.1 and still write in that days; date? Do you have a Letter-Head logo that would fit in geoWrite? But do you use it? Would you like to have a Simple Way of doing all these things, Well you already can with geoWrite 2.1. All you need to do is use the HEADER. that is in the Options Menu, Buy 'opening' the, header (C=H), you can add 6 Letter-Head logo, your address and that days date. You just type in the word DATE and today's date is typed out for you "on you print out. All these things are easy to do, but most of us don't use them. One of the reasons for this, Is that unless you hays a Real Time Clock or CP-Clock (like Frank's got), you hays to set the Date and Time each time you Boot Geos up. Now if you are like me, you very rarely set today's date and time, when you boot up Geos. You may have tried out some of the Auto-Exec file's that you can get, that add the Date and Time at Boot Up. But even these need to be set each time you Boot Up. That was until I got a program from the geoClub Library (No: 72), called AutoTime this is the first Date and Time program that remembers what you type In' So you type In today's Date and Time, and when you next Boot Up, all you will have to change is the day and time for that day.

I find it great, as there are days when I will use Geos every day. So it's just a case of changing that day's date, and if I want the right time I set that to. This is very useful if you close down and come back to Geos later in the day. So now that we have today's date set. We can simplify adding the date to our letters. As I said before, it's just a case of using the HEADER, that's in geoWrite. Once you have opened the HEADER, you will find that it does not look that much different, from normal geoWrite. You can use any Format, you like, with any style/font. You can change the Margins, and you can add graphics, but not too big. You will soon know if your graphic is to big as geoWrite will tell you. In geoWrite, graphics are centered. To move a graphic, just highlight

and change your margins. Now look at where your Graphic is. Is it were you want it. If not, just follow the above steps again. To add the Date. Decide were you went your date to be (I select Right justification), and type in the word DATE, (this most ALL *be* In CAPS; for this to work). Press RETURN once or twice. As before you can have the Date in any style, font or. size you like. To close the HEADER ether press C= H or go to the Options Menu. Once back in geoWrite, you will see that it looks no different to a blank page. To see want you have done, just use Preview Mode and you will see what you letter looks like I would do this just before you are going to print out. As you can then see whether you letter will fit on one page or not,

Don't worry about how many lines you have at the top of your page. I find it much better to have my letter/Header start at the top of the page and move the paper in my printer to where I went my letter to start printing. There is only one draw back to using the Header option. If your letter is more than two pages long, then remember that your header will be printed out with every page.

Well, happy letter writing. I hope you will have ago at using the HEADER in geoWrite 2.1. You can add a few more things In the HEADER or FOOTER of geoWrite 2.1. Like the TIME and PAGE Number. All of these are done in the Same Way as the DATE, Just type in the word DATE or TIME or PAGE in Capitals, and it will be printed out for you. I hope that you have found this article of some use.

This is a reprint of an article produced by Sharon for the June 1994 geoNews and reproduced for the benefit of those newer members who did not read it first time around.

J M V Grafix

Computer Graphics

Jane M Jones, PO Box 635, Enfield Plaza, 5085,
South Australia

Clip Art Series consists of nine collections

People & Places	16 Graphics
Signs & Xmas	16 Graphics
Space & Time	10 Graphics
Hands On	16+ Graphics
Sports Equipment	11 Graphics
Trucks N' Stuff	9 Graphics
Sports	10 Graphics
Miscellaneous	12 Graphics
Creatures	11 Graphics



Taken from geoPaint file CREATURES

Handbooks

The World of Geos Handbook (includes disk)
The World of Geos Handbook II
The World of Geos Handbook III
GEOS In Review (reviewing Geos authors programs)
Handbook of the C64
Handbook of the C128

UK ONLY : For an 8 page product list send an
A5 SASE to the address on Page 1

A Few GOOD Tips

by Colin J. Thomson

Here are some of my favorite tips I have found over the year's, and that I hope you may find usefull.

1. Printing labels using Perfect Print, install the "LQP Labels" driver when needed, and make sure that the Box "Singlesheet" in the main menu is OFF, ie the box is not filled. You can edit the file to suit your own needs ie Form Feed length, usually 1.5 inches for most Labels, have a look at the file in geoWRITE its easy to follow. You may know that if you have selected "Save" from the main menu you do not need your normal LQA/LQP files on the drive as they are saved within the main programme. For obvious reasons do not select "Save" when using the "Labels" driver as it will be saved into the main programme. I think you should be able to use the Full Page type labels instead of the single type but I will be experimenting with this soon!

2. Modem's and geoFAX

You can use almost any PC/MAC Modem's with Terminal programmes, (if you have a swiftlink or Turbo232 cartridge) for Internet and BBS's use. BUT when it comes to geoFAX it's a different story. There are 2 main things to look out for. A. Make sure that it is a Group 3 class 2 or 2.0 Fax Modem, this is quite easy to find out a it is usually listed in spec in the manual, or if you already have one you can send the command (from a term programme or within geoFAX) AT+FCLASS=? and this should give you the answer. B. This one is the amount of internal Ram the Modem has, this is more difficult. Of the 2 Modems I have neither Manual tells you this in the spec. When I bought my Backup Modem I had no idea at all, I worked on the assumption of not going to cheap.... you can pick up Non Branded Modems for as little as /50.00, but do you know what your getting?. I went for one from Comets at /85.00 and the Model is a Lasat Netcom 33.600, and it works fine, and has the right amount of Ram etc. There is also a command you can send, to find this out, which is AT+FBUF? and it should give you a figure of something like 168231, this /shows that it has the required minimum 16k of ram This works on my Zoom modem and Lasat Modem and both work very well with geoFAX and Novaterm 9.6.

Another problem I found is that there was no way geoFAX would work with my PPI Ram-Drive + EX2+1 expansion card, I think due to the I/O address and the amount of space it uses, (NOT because they share the same address, you can change this with the card). This I believe can be sorted out with an Address Fixer but I am not sure if they are still being made. 3. Maverick not booting. Have you ever tried to boot up Maverick and it gets half way through the loading process and stops..... Well I have found out that with my system I have to unplug my various version's of the geoCABLE for it to work, I have yet to find out why. This problem happened on the C64 and the 128 in the 64 mode, but all is fine now.....any ideas? 4. Do you have 64K of Ram in your 128D?. After many months I was convinced that my 128D had 64k of video Ram (because the Ram Test in Maverick said so) "Your Ram has passed the Ram Test!" How wrong I was. After running some programmes which need the 64k in Geos it was clear to see that something was wrong, the screen graphics were all over the place, I suppose I should of tried this first!! It's also worth a mention that Novaterm 9.6 would of showed me this as well in the Buffer menu..... Now, after fitting the new Chips all is ok now, and the copier's in maverick now come up with some text saying it's using the Ram, so less disk swapping, (why didn't I realise this before?). 5. CMD move, better than RamMove. RamMove is the utility that comes with RamLink/RamDrive and works quite well, but for small cost I would recommend that you buy CMD's Utilities Disk. With this comes CMD-MOVE which I find is much more user friendly, plus you get some of the updated programmes ie FCopy+, Bcopy etc and many more. These are very usefull. I use Bcopy to back up my entire Ram including the partition layout onto 3 X 3.5 inch disks. All of the programmes work in either 40/80 column mode. 6. Make up some Reminder card's. If you use something like New Keys by Jean F Major, I have found the need to print out small memo cards with all the short cut's on, the same goes for Novaterm for example. The "Function" keys (which you can have up to 16) can be programmed for different things, instead of typ-

ing in a long addresses you can do all this before going on line and "save them" then when you log on just select the appropriate Key....no more long URL's to type. The F1 key is reserved as the "Password" key which is also very useful..

Well I hope you find this of interest. On its way to me is the "Mover 3" package by Rick Coleman, (who no longer writes for our machines) but this upgrade is the best text/Photo album Manager around, 40/80 columns, works with 4 Drives and all this for a Tenner! all in. I will try and review...time permitting.

Any one wanting the addresses for Rick or Jean just let me know.

Postscript

After sending you my last piece, I have since found out that the branch of Comets here in Rayleigh have just changed there Modems for a different type, from being "Lasat 36.00" they are now "Premier" modem's. They are stated on the box as being Class 2 compatible but the one I have tested is not!. This is because apperently some have a different Revision Rom, I am investigating this to see what can be done and will let you know of any developments.

Perhaps you could Tag this on the end on my article.

CUL Colin G6AVK

(As you can see I did - 73's Frank)

This is a follow up to the amusing "The Smoke Theory" article.

I would like to say that I cannot agree completely with this article. As "non smoker" I have to say that "I do not leak" except on the odd occasions after a night out in the pub and even then it's more like a controlled discharge of my Biosyste tank, (plumbers will know) to enable me to continue my intake of bitter, so in this case, the theory "smoke causes leaks" doesn't quite hold true :-).

Jim Kindon

(I just publish 'em Jim and do not testify to the authenticity of other people's theory's. FRANK)

Don's Digest

by Don McManamey

Here we are back to school, football season upon us, and the weather is cooling down. The time has come to sit down, relax, and enjoy the easy life, right? Wrong! Dale is back to work as an official in school football, some of us are working copious hours in aircraft and my youngest has run off to school in Oklahoma and left me to carry his lawn mowing business. And we thought things would slow down. No way, Jose. With all the complications in my life at this time, what I really needed was to put together a Disk O'Quarter. Well, guess what? It is Disk O'Quarter time again.

Once again our Dale Lutes has come up with some really great GEOS stuff. He has written more of those tablature fonts. You know, those funny finger placement things for guitar players who can't remember where to put their fingers for each chord! I'm sure the guys (and presumably gals) over in the UK will really like that. I had been wondering when we would get to run some of their stuff on the Disk O'Quarter and lo and behold Dale has included some great stuff from across the pond. Among the GEOS goodies is a complete listing of all the Star Trek programs. If you would like to know the title of a show and if it was before or after another show then search no longer. There is a listing for Star Trek, the Next generation, Voyager, the movies, and Cartoon Trek. Looks like you need to trek on over to your computer and check it out. While you are there, check out the GIF that was included on the geoSide as well. It is a picture from the Mars Pathfinder probe.

Now among the things you'll find on the front of the Disk O'Quarter is a game called the Great Gianna Sisters. This is a European game which was cracked and distributed in the USA. It has a few quirks but is pretty nice. This game was re-written and released as Super Mario Brothers. If you are familiar with the Commodore version of Super Mario Brothers then this game will be easy to figure out. We also have a promo with picture and sound. This cute artwork shows one of the Gianna girls running from some attacking mutants.

For those who are interested, I have planned some work on the Public Domain Library but to date haven't really done anything except plan. The PD Library should be out for people to use this month. My apologies for not getting it to last month's meeting. I left the Disk O'Quarter behind also. That makes me double sorry. Some people just say I'm a sorry person.

By the way, attendance has been down the last few months. If you were there last month you would have seen a demo on running Commodore software on other machines. It had been said many years ago that, "Any computer can emulate any other computer as long as speed, memory, and cost are not important." Well, computers have gotten powerful enough that emulating a Commodore 64 is no problem. It has been said that the only thing a person would want to emulate from a Commodore is the games. Well I have used Microsoft Word quite a bit and as nice and powerful as it is I really like The Write Stuff on my 128.

Well, it is time for me to go but be sure to come out and support the club. Until next time, think about this: Why do we drive on parkways and park on driveways? To me, that does not compute!

(This article is reproduced by kind permission of the author Dale Lutes who also happens to be the editor, of the original source, ZERO PAGE the monthly newsletter of Commodore Users of Wichita Kansas . For which we thank them very much indeed , lets hope we can continue this exchange. Also thanks to Dave Elliott for securing this co-operation).

They get everywhere !

H.M. Coastguard Station at Lytham on the Lancashire coast has assisting its essential work a piece of GEOS artwork.

Mike Jones, geoCLUB member and Coastguard has taken the calendars featured in the December geoNEWS, embellished them with the Coastguard logo and inserted the appropriate twice daily times of local high water. These are now posted at the Lytham Coastguard Station as an aid to maintaining its highly efficient operation.

It would be interesting to hear of any other uses of these calendars or even if any other members have purchased this disk from our friendly librarian.

Camels

As a very young National service NCO in the Suez Canal Zone in the early 1950's I had daily dealing with the rag-tag band of local workers who operated the essential camp services.

From the start there was a communication problem. Not my lack of Arabic, but their English. They understood perfectly but it had been learnt from the previous regiment at the camp who were a Scottish regiment mainly drawn from less salubrious areas of its capital.

Luckily their foreman was Kamil, a Bedou who had learnt his English working at the Officers Club in Fayid and whose accent was more Sandhurst than Gorbals.

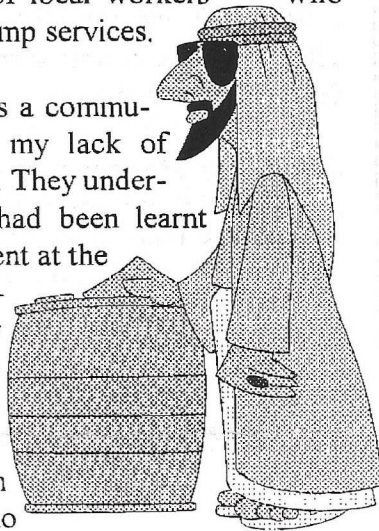
Over the months we began to chat about more than the days problems and he often came out with little gems of wisdom. all of them I had forgotten over the years until I ruined my GEOS boot disk and had to hunt for my backup copy. Then Kamils words of wisdom came back " Put your trust in Allah, but don't forget to tether your camels".

Every computer user should have it written over their computer, for a backup copy of important data is essential for every computer user.

The gems of wisdom didn't only pass one way. I like to think that there is a bearded, distinguished looking Bedou sitting outside his low black tent on one of those fantastic starry nights in the desert. With him around his fire of dried camel droppings are his grandchildren as he passes on to them the North Country words of wisdom he heard many years ago "If thee does owt for nowt, allus do it for thi'sen" and the really essential one for life in the desert "Never pee into the wind, unless you want to get your own back".

I hope he has remembered to set the alarm on his new Range Rover.

22763738



Buying A Scanner

Peter Hunt
GeoClub OZ

For some time I always wanted to buy a Scanner but they were always too dear until now. Then a friend of mine bought a Flat bed scanner for \$300.

So I decided the time was right to buy A4 flat bed Scanner. But I had no idea at the time what make or software I needed. So the first thing I did was log onto the Web & search on the Internet for Yahoo.com search engine & type in Scanners. This took me to a local Oz site called AIM. This site gave me a good idea with text & photos which Scanner to buy. I also checked out the Local computer Shops in my area. I should mention I needed the scanner for my PC. The reason was because Frank who Publishes GeoNews (Geos Magazine) uses a Laser Printer to Publish his Magazine. Plus we both use PC's to send our E-Mail.

On checking various Scanners I made my final choice. I had checked the Optic Pro 4830 but as it used the Printer Port connection. Then I knew it would be impossible to do multi Tasking, such as print one scanned picture & then scan another while it was printing. In the end I chose a Genius A4 Flat Bed Colour Scanner with SCSI card, 24 Bit & 300 DPI. With a SCSI Card & Cable you scan & Print at the same time. It takes about 30 seconds to scan a picture in.

It's very important that you get good software when buying a scanner. With the scanner I got a twain driver, Photo Impact to print the picture & a OCR text reader to copy & print plain text from a document. To manipulate the graphics scanned I use MS Publisher & the New Print Shop to crop & resize the graphics. I can then use a graphics converter such as Thumbs Up to convert the finished graphic to a PCX File. I then use Big blue reader with my 1581 drive to convert from a PCX/IBM file to a Commodore Seq.file & then using Doreen Hornes PCX Converter to save as a 64 GeoPaint file.

In conclusion I do believe in paying \$495 for my Genius flat bed scanner was worth the money. Another handy feature is that it has a raised hinge on the cover so I can scan magazines or books with good results.

1570 Device Switches Part II

by Dave Elliott

When Sharon first mentioned that she had acquired a 1570 from a car-boot and was very pleased with its performance but displeased with the inability to change device numbers I suggested that she open up the drive to see what was inside. CBM in their wisdom, sometimes fitted dip switches or in Sharon's case had all the connections connected to send the Device 8 signal. Not wishing to get too technical and to keep the alteration as simple as possible for the non technically minded Sharon's ARTICLE was born.

Bearing this in mind, what Sharon stated was absolutely true, but as Jim pointed out for the technically able person, going backwards could be achieved. The simplest method would be to close up the cut moon shape wire, then re-solder which would take you back to the previous device number.

To fit device switches is fairly straightforward. Using Sharon's drawing, simply snip off the half moons leaving enough of the original connection to solder the new wires from a single pole switch. Two switches will be required as Jim suggested to enable the use of all the device switches available (8 to 11). Studying Sharon's drawing, connect two wires to the stubs of the device nine **CUT HERE**. Connect the other ends to the switch. Repeat the procedure for the other side (**device 10 CUT HERE**). Once completed all that remains is to decide where to situate your new switches. Drill two 3/16" or two 1/4" holes depending on what type of switch you bought. Location is not too much of a problem, simply choose a clear spot that will not interfere with the internal workings. I would suggest that you fit the switches to the bottom part of the casing. This will ensure that if you need to remove the top casing for any reason then you will not have to worry about the switches and their wires. For the expert there is just enough room to fit the switches on the right hand side of the bottom casing, looking at the drive from the front. For the non expert then the rear panel on the bottom casing provides ample

room. Before boxing up test out your new switches. Load the directory or use Control-D if you have Jiffy Dos installed to see what device the unit is set to. Once drive 8 is established fit and secure the switches and box up. If it doesn't work then it should only be a bad solder joint. Re-check your connections, re-solder if necessary. Very doubtful if your new switches would fail but it could happen. A simple test with a multimeter should prove if the switches are working. If like me your memory is not like it should be then the numbers from a Video Cassette could come in handy.

UUI (utterly useless information)

The 1570 was brought out by CBM when they started to market the 128 in Europe. It was not released in the States and contained a 1541 drive mechanism with a 1571 board. The board was modified to send signals as a 41 but use the speed of a 71. Since I have a couple of these drives I have found out a couple of things. Please bare in mind I use a 128 and Jiffy Dos. I also believe that Geos is faster with Jiffy Dos than without. By fitting a 1571 Jiffy Dos chip, Geos will recognise the drive as a 71 and not a 41. Thus you gain the speed advantage, obviously you cannot write to it as a 71 but no more messages saying DOUBLE SIDED DISK IN 1541 or words to that effect if you accidentally put a 71 disk in the drive. (assuming that you have a 71) CMD's excellent disk utilities do not recognise the drive at all. For source or destination when a 1570 is on line a question mark will appear.

In my humble opinion it is a grossly underrated drive and unfortunately not to many around now.

HAPPY GEOSING

Dave Elliott

Random Access

by Dale Lutes

(This article is reproduced by kind permission of the author Dale Lutes who also happens to be the editor, of the original source, the September 1997 edition of **ZERO PAGE** the monthly newsletter of Commodore Users of Witchita Kansas . For which we thank them very much indeed , lets hope we can continue this exchange. Also thanks to Dave Elliott for securing this co-operation).

September is here and my brief respite from sports officiating is over. This means that I'll be absent from our next two meetings (or very late, at best). I'm confident that you will all take good care of the club while I'm gone.

September also means that it's time for another Disk O'Quarter. Much of the geoSide is provided once again by Dave Elliott. After seeing the article on building monitor cables reprinted in the July newsletter, Dave mailed me several related GEOS programs. These are essentially on-line instructions for building cables. Also included are several programs which list the episodes in the Star Trek, Next Generation, and Deep Space 9 series. Dave is the author of all of the cable-making and Trek programs.

RPN and RPN128 written by Robert A. Knop Jr. also come to us courtesy of Dave Elliott. These programs implement reverse-polish notation calculators for GEOS 64 and GEOS 128. If you've used the early Hewlett-Packard pocket calculators, you are familiar with R-P notation (I think current Hewlett-Packard models use algebraic notation). The source code is not included, but I have it available for anyone who would like a copy.

I found some time in August to complete work on four additional fonts for my Tablature Font Collection (DOQ #16). I also made a few modifications to the original four, so the entire set is present on this Disk O'Quarter. Thanks to Don McManamey for providing the set of guitar chord diagrams which allowed me to make these

additions.

If you were present at the August meeting, you saw the club's new sign which was posted near the road. For those who missed it, the sign reads "Commodore Club Meeting Today" with an arrow pointing the way and the Commodore logo prominently displayed. The sign was professionally painted in red and blue, the logo colors. We owe a big thanks to Robert Bales for the idea, for locating & contracting with the painter, and for making the sign posts. Robert and I had several conversations about the sign and what it should look like. I am happy to say that the final result exceeded all of my expectations.

The steering committee has been working hard to come up with a schedule of meeting topics. We always try to plan things several months in advance. Right now, we have the meetings scheduled through January 1998. In closing this month's "Random Access," I want to take the opportunity to thank the committee members for all the effort they put into the planning and execution of our club activities.



TAZ by Peter McGuinn, New Zealand

“Cl ips 2” by Peter McGuinn of New Zealand



These graphics and many more by Peter are available on geoClub Library Disks

geoClub and geoNews are copyright 1991 F.Cassidy, 55, High Bank Road, Droylsden, Manchesdter M43 6FS England
geOzClub and geOzNews are copyright 1991 Peter Hunt, 70, Betula Street, Doveton, Victoria ,3177, Australia